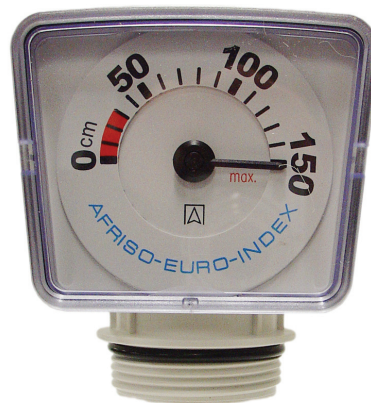


TANK LEVEL GAUGE

Mechanical float operated water level gauge is suitable for installation on potable and rainwater tanks. The gauge has a reversible face plate. One side can be used for tanks to 1.5m in height, the other side for water tanks to 2.5m in height. The gauge will give an accurate reading of the current water level in the tank.

FEATURES

- Suitable up to 2.5 metres deep
- Easy mounting on top of tank using optional back nut
- No batteries or wiring are required
- Easy to read 90mm dial face
- Dial face registers zero when tank is empty
- Dial face registers 150cm or 250cm (depending on set scale and tank height) when tank is full
- Reversible dial face to suit 250cm deep tanks
- Weighted float to ensure correct depth reading



MT-PROFIL

SPECIFICATIONS

- 40mm bsp male thread
- Interchangeable scale 0-150cm & 0-250cm

HOW TO INSTALL

Depending on the height of the water tank, select the dial that will give you the best accuracy. Drill a 40mm hole into the tank and drop the float through it. Screw down the optional back nut using two self tapping stainless steel screws. Adjust the dial by rotating it clock or anti-clockwise so that the maximum water depth is aligned with the red line on the dial face plate.

CHANGING SCALE

Tank gauge is supplied set to 150cm scale. To set gauge at 250cm flip face plate off being careful not to damage the O-ring seal, slide scale right and lift over needle. Turn the gauge over and slide back into place, making sure the face is lined up with the correct float indication height.

SETTING FULL POINT

The tank FULL watermark is indicated when the black needle is aligned with the red indication line. This indication means the float is positioned directly under the gauge and the tank is at full capacity. When first installed this set point will change due to the thickness of the tank material, gently rotate the black needle to align with the red indicator mark to reset this point. Failing to reset this indication mark will result in overfilling the tank.

Note: There is a spring loaded mechanism in the gauge that retracts the cord. If the float is disconnected, and the cord is allowed to slip into the gauge then the spring will unload and the gauge will stop working. This will void the warranty.

MODELS	CODE
Water tank level gauge	MT-PROFIL
40mm Water tank level gauge mounting back nut	RXBN40

PERTH

PH: 08 9455 1677
FAX: 08 9455 1680
hrproducts@bigpond.com.au

SYDNEY

PH: 02 9725 5733
FAX: 02 725 5283
infonsw@hrproducts.com.au

MELBOURNE

PH: 03 9457 7500
FAX: 03 9457 7400
infovic@hrproducts.com.au

BRISBANE

PH: 07 3806 0522
FAX: 07 3806 0533
infoqld@hrproducts.com.au

ADELAIDE

PH: 08 8341 0008
FAX: 08 8341 0707
infosasa@hrproducts.com.au