

# Leach Drain Septic Systems

## Advantages

### Easy to Transport

Take in the back of a ute and assemble on site.

### Easy to Install

Less than 30 minutes for one man, including assembly.

### Modular Structure

Create any shape and any size.

### No Breakages

Impossible to break in transit or during installation.

### No Aggregate Needed

Just backfill with clean sand.

### Extremely Strong

Crush strength of over 20 tonne per m<sup>2</sup>  
(withstands accidental motor vehicle traffic)

### High Percolation

High void space including sides and ends.

### Lightweight

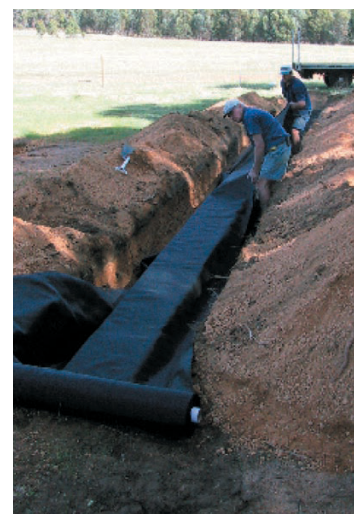
No crane or mechanical lifting needed.

### Environmentally Friendly

Made from recycled plastic.

### Approvals

Approved for use by local authorities.



Coerco tank modules are a lightweight and high strength, polypropylene tank with 95% void space. Tank modules are assembled on site and easily positioned in the excavated trench to form a continuous channel. Inlet pipe is connected from the top of the tank prior to wrapping in Coerco geotextile on the topsides and ends. The full structure is then backfilled with clean sand or gravel.

Coerco septic systems are three times more efficient in leaching, as compared to traditional gravel systems and don't have any traditional clogging issues.

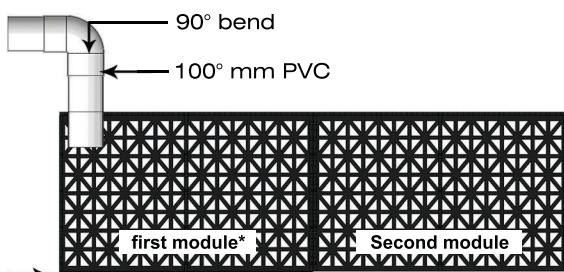
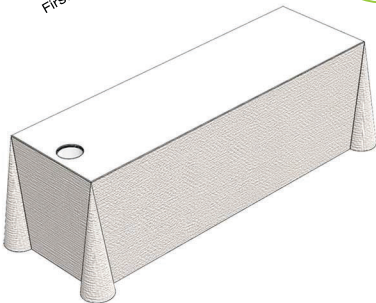
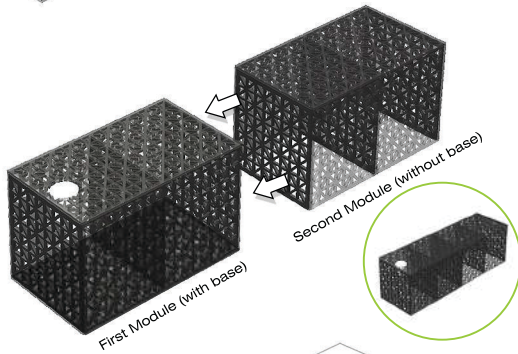
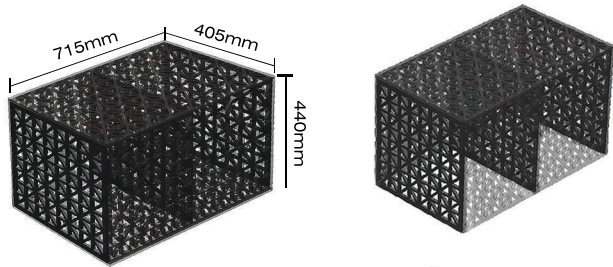
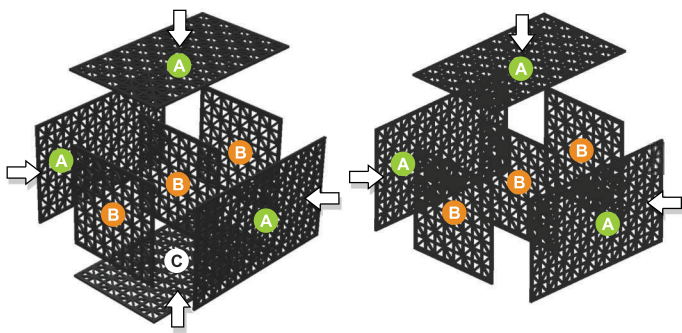






**First Module**  
(with base)

**Succeeding Module**  
(without base)



\*Base installed for the first module to prevent scouring.

### Step 1

Fix Sides and top plates (A) to tank plates (B). Plate C (the base plate) is installed only on the first module to prevent scouring. The succeeding modules don't require a base plate.

### Step 2

Check if all parts are securely locked into position.

### Step 3

Assemble more units together to form continual drain to the required length on prepared base with module oriented as shown.

### Step 4

Completely surround the top and sides with the fabric supplied.

### Step 5

Connect outfall pipe to the top of the tank by means of 90° bend and secure integrity of connection. Backfill with clean fill a minimum of 300mm to surround structure before compacting.