

KELCO

LM Series Heavy Duty Level Switch

Features

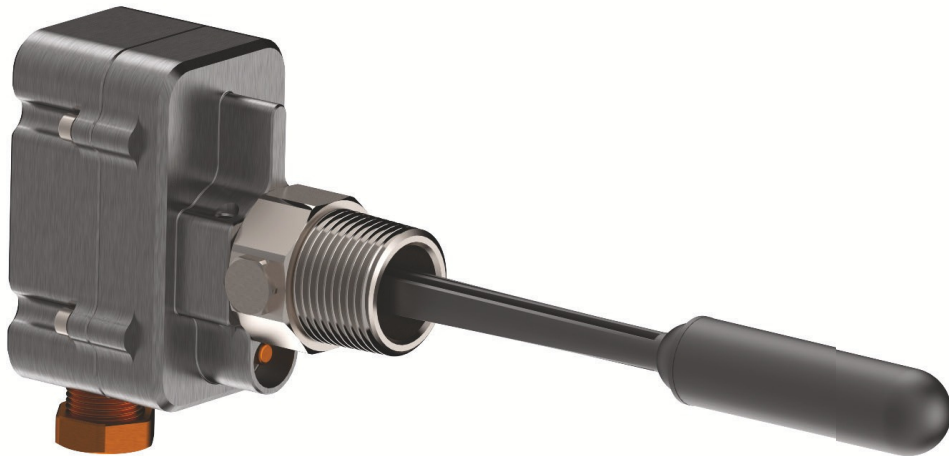
- 500V AC 15 Amp S.P.D.T microswitch
- 316 Stainless Process Connection
- Super Tough Billet Aluminium Housing
- Manual Override Built in
- 1" BSP & 1" NPT Models Available
- Seal-less magnetic Drive
- Weatherproof IP67 Housing
- Easily Serviceable

Applications

- Tank and liquid level control
- Low level protection for pumps
- Level control in water treatment
- Chemical tank level monitoring

Outline

The LM Series side entry level switch provides a reliable accurate solution to tank level control. The switch is constructed from a combination of 316 Stainless Steel and CNC machined aluminium with a Polypropylene float and arm. The level switch is supplied with a S.P.D.T. 5 to 500 Volt Single Pole Double Throw (S.P.D.T) microswitch for general control circuit use. The LM series level switch is built tough to give a long reliable service life in the most arduous applications.



Ordering

LM - H - 25B

LM SERIES

H = STANDARD HEAVY DUTY SWITCH

PROCESS CONNECTION SIZE
25B = 1" BSP THREAD
25N = 1" NPT THREAD

LM SERIES DATA

Electrical Data for the 'H' Switch

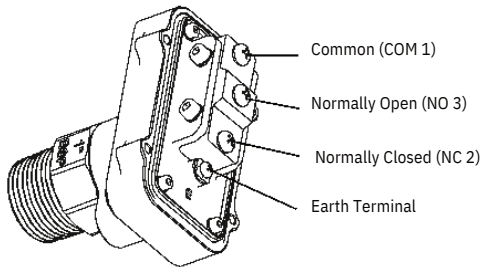
The 'LM-H' switches house a S.P.D.T (Single Pole Double Throw) microswitch. This standard switch is suitable for all general control circuit applications up to 500V AC. It is ideal for the control of pump starters, relay logic circuits, and for the direct control of contactors and timers.

IMPORTANT

The standard 'H' switch can operate at ANY voltage from 5 to 500VAC. It can be used to directly control pump motors up to 375 Watts (0.5HP) at 240VAC. For larger motors always use an interposing contactor or relay between the flow switch and the motor.

| RATED VOLTAGE | NON INDUCTIVE LOADS | | | | INDUCTIVE LOADS | | | |
|---------------|---------------------|------|-----------|-------|-----------------|-------|------------|----|
| | RESISTIVE LOAD | | LAMP LOAD | | INDUCTIVE LOAD | | MOTOR LOAD | |
| | NO | NC | NO | NC | NO | NC | NO | NC |
| 125 VAC | 15A | 3A | 1.5A | 15A | 5A | 2.5A | | |
| 250 VAC | 15A | 2.5A | 1.25A | 15A | 3A | 1.5A | | |
| 500 VAC | 10A | 1.5A | 0.75A | 6A | 1.5A | 0.75A | | |
| 8 VDC | 15A | 3A | 1.5A | 15A | 5A | 2.5A | | |
| 14 VDC | 15A | 3A | 1.5A | 10A | 5A | 2.5A | | |
| 30 VDC | 6A | 3A | 1.5A | 5A | 5A | 2.5A | | |
| 125 VDC | 0.5A | 0.5A | 0.25A | 0.05A | 0.05A | 0.05A | | |
| 250 VDC | 0.5A | 0.5A | 0.25A | 0.03A | 0.03A | 0.03A | | |

Switch contacts on the LM-H switches



The standard single pole double throw switch used in the LM-H level switch is approved to the following international standards:

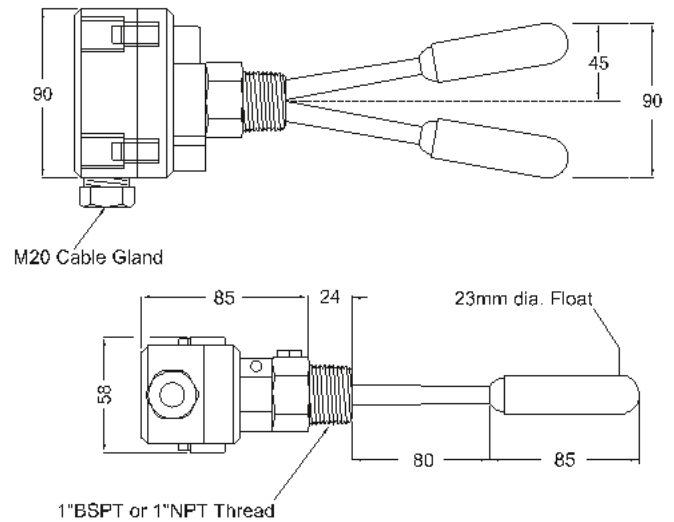
UL (File No. E32667), CSA (File No. LR21642) SEV (File No. S20/163) and CE.

Approved Standards

Operating Limitations

| Parameter | Standard LM Series Level Switch |
|--|---|
| Maximum submergence of the float | 100 Metres (328 feet) |
| Minimum burst pressure of the Polypropylene float at ambient temperature | 1800 kPa (260 PSI) (183 Metres or 602 feet of head) |
| Minimum burst pressure of the switch body at ambient temperature | 800 Bars (11600 PSI) |
| Maximum operating temperature (Process Liquid) | 80°C |
| Minimum operating temperature | -60°C (-76°F) |
| Minimum liquid S.G. | 0.95 |
| Ingress protection rating | IP67 |

Dimensions



Switching Point

The tip of the arm of the LM level switch is free to travel vertically 45mm each side of the horizontal centre line of the switch. The switching point is in the middle of this travel and occurs 2 degrees each side of the horizontal centre line. The movement of the switch arm can therefore be confined to within 3 to 4 degrees each side of horizontal and the switch will operate properly.

Kelco Engineering Pty Ltd

ABN 20 002 834 844

Head Office & Factory
9/9 Powells Road,
Brookvale 2100 NSW Australia

Postal Address
PO Box 7485 Warringah Mall
Brookvale 2100 NSW Australia

Phone: +61 2 99056425
Fax: +61 2 9905 6420

Email: Sales@kelco.com.au
Web: www.Kelco.com.au

PLEASE NOTE: Kelco Engineering Pty Ltd reserves the right to change the specification of this product without notice. Users will use their own judgment to determine the appropriateness of using Kelco Products in an application, any safety measures required and that the product is properly installed for that application. To the extent permitted by law Kelco Engineering Pty Ltd disclaims all and any liability for the use of this product in any particular application or for defective installation. Kelco switches are warranted against malfunction by a 12 month return to base manufacturer's warranty. Full details of our warranty and limitation of liability can be found in this document or downloaded from: <http://www.kelco.com.au/warranty>

All rights reserved copyright Kelco Engineering Pty Ltd © 2022