

Qty. Description

1 UNILIFT KP.250.A.1



Note! Product picture may differ from actual product

Product No.: [012K4700](#)

Submersible drainage pump

Vertical single-stage stainless steel submersible pump with vertical discharge port and integrated submersible 1-phase canned motor in insulation class F with thermal overload protection.

The pump is fitted with suction strainer and a carrying handle and is supplied with a 5 m mains cable and float switch for automatic start and stop.

The impeller is a semi-open impeller for 10 mm free passage suitable for pumping groundwater, surface water, rain water and similar liquids.

The pump has a double shaft seal consisting of two lip seals with grease in-between.

The pump has an outer casing ensuring continuous cooling of the motor by the pumped liquid. The rotor shaft operates in two maintenance-free carbon bearings cooled by the pumped liquid.

The motor is filled with a non-toxic motor liquid.

Liquid:
 Liquid temperature range: 0 .. 50 °C
 Density: 998.2 kg/m³

Technical:
 Maximum flow: 3.11 l/s
 Max. Particle: 10 mm
 Approvals: CE,RCM,LGABG,EAC,TUVRHWID

Materials:
 Pump housing: Stainless steel
 EN 1.4301
 AISI 304
 Impeller: Stainless steel
 EN 1.4301
 AISI 304

Installation:



Company name: Land and Water Technology
Created by:
Phone: 08 9209 3330
Email: orders@landwater.com.au
Date: 2/28/2023

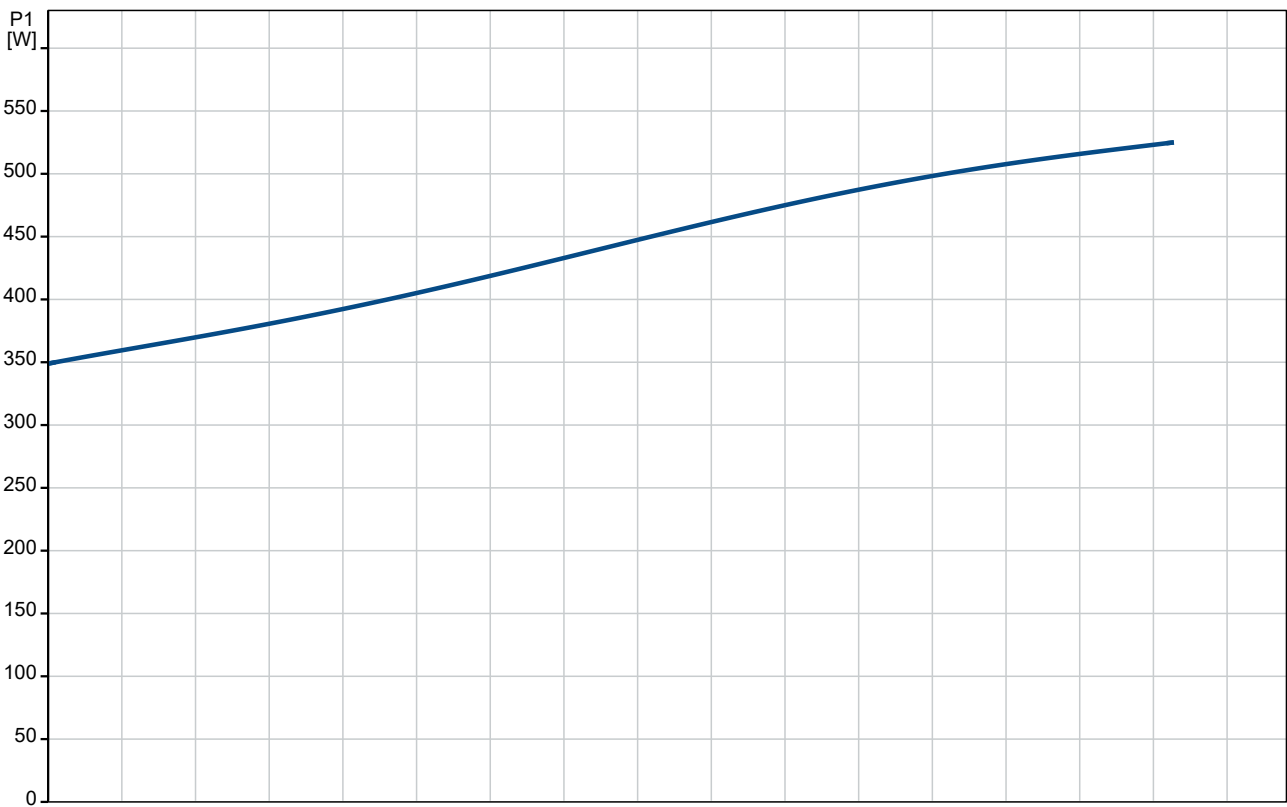
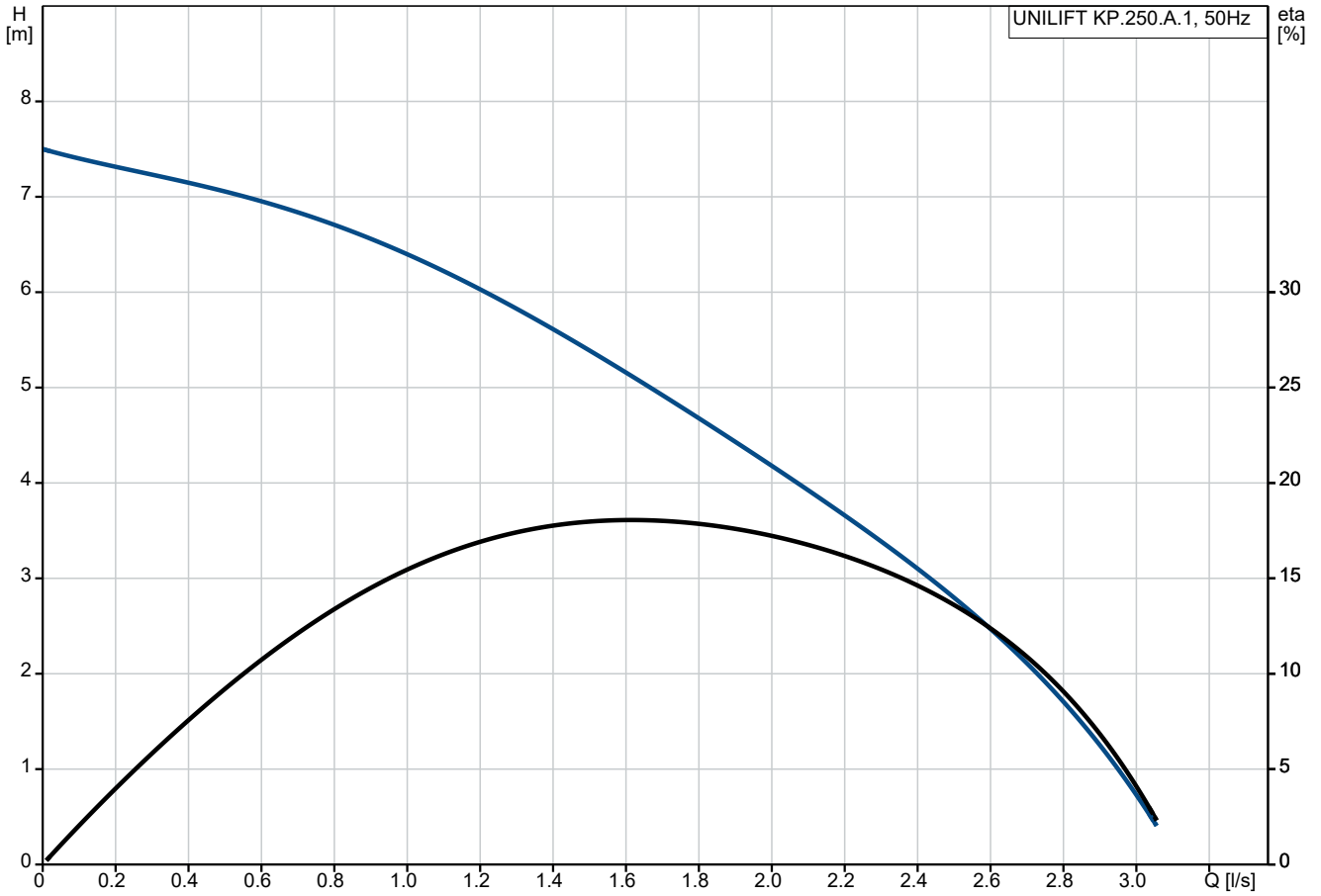
Qty.	Description
------	-------------

1	Range of ambient temperature: 0 .. 50 °C Type of connection: Rp Size of connection: 1 1/4 inch Maximum installation depth: 2 m Place of installation: Indoor Electrical data: Power input - P1: 480 W Mains frequency: 50 Hz Rated voltage: 1 x 230-240 V Rated current: 2.2 A Capacitor size - run: 8 µF/400 V Enclosure class (IEC 34-5): IP68 Insulation class (IEC 85): F Length of power cable: 5 m Type of cable plug: AU Others: Net weight: 6.6 kg Gross weight: 7.1 kg Shipping volume: 0.013 m ³ Environmental approvals: WEEE
---	--

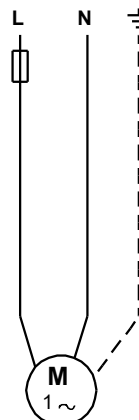
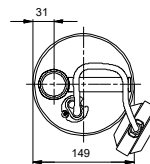
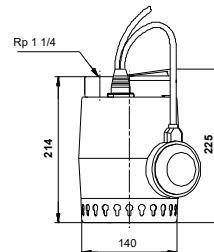
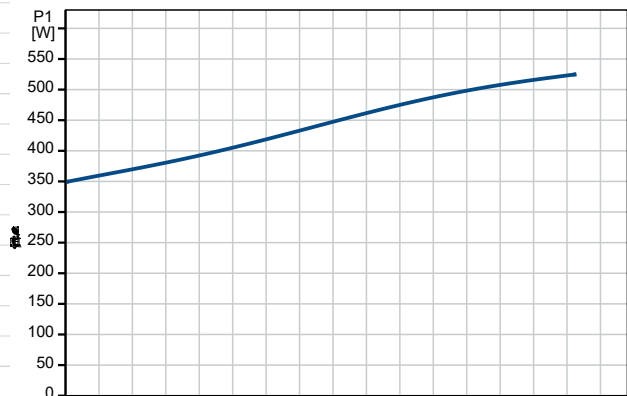
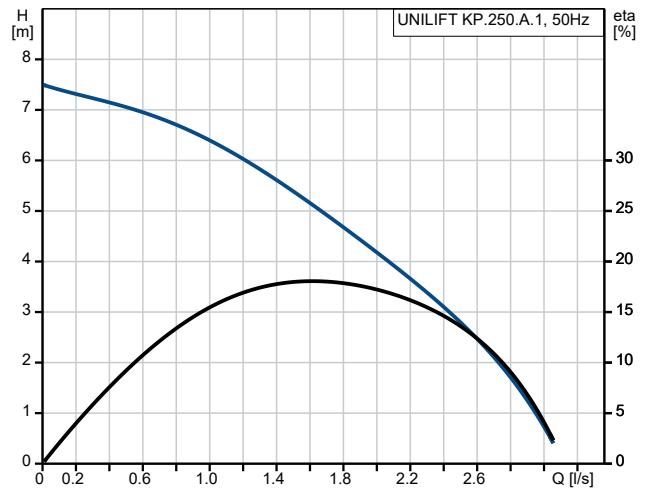


Company name: Land and Water Technology
Created by:
Phone: 08 9209 3330
Email: orders@landwater.com.au
Date: 2/28/2023

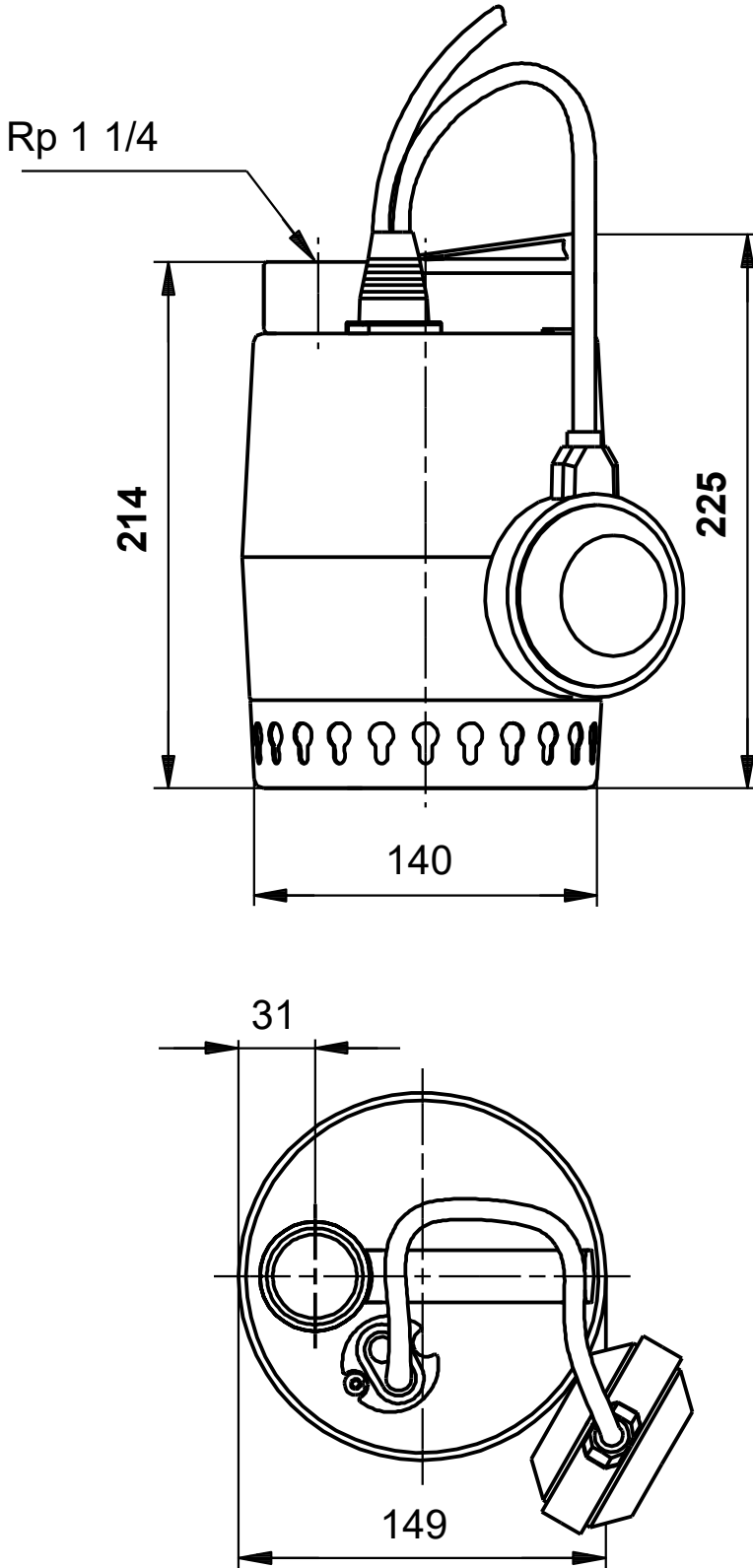
012K4700 UNILIFT KP.250.A.1 50 Hz



Description	Value
General information:	
Product name:	UNILIFT KP.250.A.1
Product No:	012K4700
EAN number:	5700391117138
Technical:	
Maximum flow:	3.11 l/s
Maximum head:	7.5 m
Max. Particle:	10 mm
Approvals:	CE,RCM,LGABG,EAC,TUVRHWI D
Model:	A
Materials:	
Pump housing:	Stainless steel
Pump housing:	EN 1.4301
Pump housing:	AISI 304
Impeller:	Stainless steel
Impeller:	EN 1.4301
Impeller:	AISI 304
Installation:	
Range of ambient temperature:	0 .. 50 °C
Type of connection:	Rp
Size of connection:	1 1/4 inch
Maximum installation depth:	2 m
Place of installation:	Indoor
Liquid:	
Liquid temperature range:	0 .. 50 °C
Density:	998.2 kg/m ³
Electrical data:	
Power input - P1:	480 W
Mains frequency:	50 Hz
Rated voltage:	1 x 230-240 V
Rated current:	2.2 A
Capacitor size - run:	8 µF/400 V
Enclosure class (IEC 34-5):	IP68
Insulation class (IEC 85):	F
Built-in motor protection:	CONTACT
Thermal protec:	internal
Length of power cable:	5 m
Type of cable plug:	AU
Controls:	
Level switch:	float switch
Others:	
Net weight:	6.6 kg
Gross weight:	7.1 kg
Shipping volume:	0.013 m ³
Environmental approvals:	WEEE



012K4700 UNILIFT KP.250.A.1 50 Hz



Note! All units are in [mm] unless others are stated.
Disclaimer: This simplified dimensional drawing does not show all details.