

### Parts:

1. Pressure regulator
2. Air inlet
3. Pressure switch  
(sticker indicates switch settings)
4. Air tank power outlet
5. Air tank power cord
6. Drain valve / safety valve
7. Pressure gauge
8. Air tank air outlet

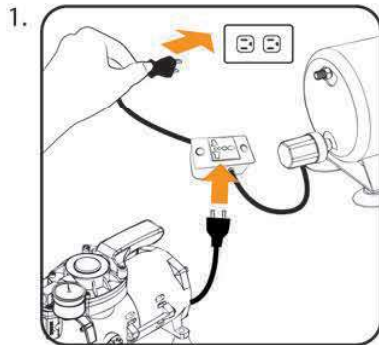
### Parts required but not included:

1. Air hose x 2
2. Sparmax air compressor
3. Dual-action airbrush

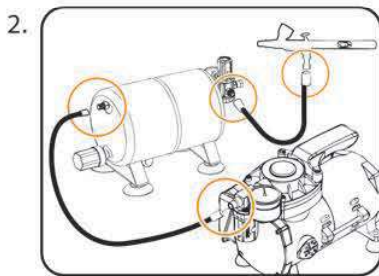
### Warnings

1. Prior to first use, carefully unpack the unit and check for transportation damage. In case of damage, do not use.
2. Check the voltage on the technical data label for the compressor and make sure it matches with mains.
3. Work in well-ventilated, clean area and away from wet surfaces
4. Inspect the tank for unsafe conditions such as rust and cracks. Never weld or drill holes in tank.
5. Do not attempt to disassemble or modify unit. Contact your supplier for all service issues.

### Set Up



Plug compressor's power cord into the air tank power outlet. Plug the air tank power cord into mains.



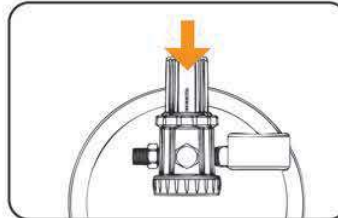
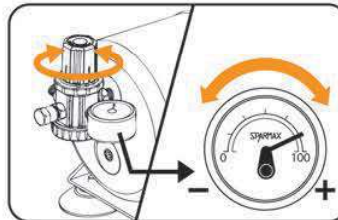
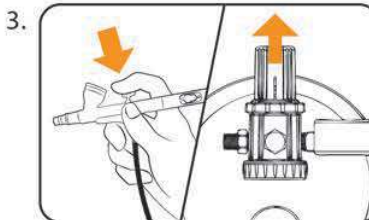
With an air hose, connect compressor's air outlet to air tank's air inlet. Use a second hose to connect air tank's air outlet to airbrush.

#### IMPORTANT - prior to operation:

- Make sure the air tank's drain valve is closed.
- If compressor has a bleed valve, make sure the compressor's bleed valve is closed.
- If compressor has its own pressure regulator, set it to provide maximum pressure.

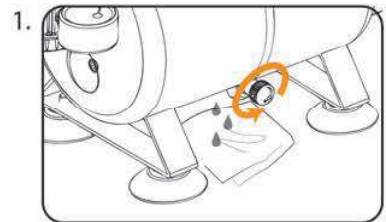
### Operation

1. Turn on compressor.
2. The compressor will automatically stop when the air-tank is full and will automatically start when the air tank requires more air.



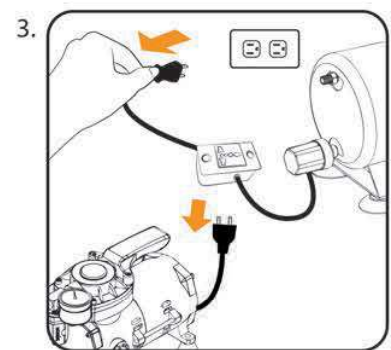
Use the air tank's pressure regulator to adjust pressure: Pull up on the regulator knob. With the airbrush trigger depressed, turn clockwise to increase pressure, counter-clockwise to decrease pressure. Gauge indicates current pressure. To lock regulator at the desired pressure, push down on knob.

### After use



Drain the air tank by opening the drain valve located at the bottom of the tank. Hold a napkin or container under the drain valve to receive any accumulated water.

2. Release any excess pressure by pressing the airbrush trigger.



Unplug compressor from air tank system. Unplug the air tank power cord.

\* Illustrations use 2.5L air tank system for reference. Instructions are generally applicable to all Sparmax air tank systems.