



### Feature:



.Integrated fixture, easy installation, no trim and can required.  
 .high quality housing, good heat dissipation.  
 .North American standard junction box inside, easy wiring.  
 .ETL/cETL/RoHS approved.  
 .3 Years Warranty.



### Feature:



.Integrated fixture, easy installation, no trim and can required.  
 .high quality housing, good heat dissipation.  
 .North American standard junction box inside, easy wiring.  
 .ETL/cETL/RoHS approved.  
 .3 Years Warranty.

## Dimmable LED Puck Light

**PLP3KWH**

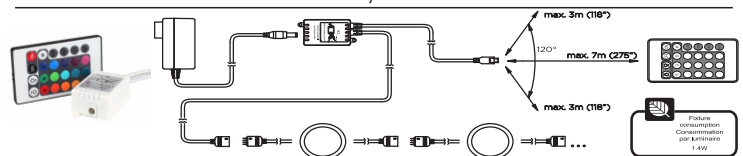
- **Model:** PLP3KWH
- **Input Voltage:** 12V/DC
- **Power Consumption:** 3.2W
- **CRI:** Ra>80
- **Luminous:** 230Lm
- **Beam Angle:** 100 Degree
- **Colour Temperature:** 3000K, Warm White
- **Fixture Colour:** White
- **Cutting Diameter:** 2.30 Inch
- **Environment:** Indoor Use Only
- **Life Time:** 25,000Hours
- **Material:** Plastic
- **Warranty:** 3 Years
- **Standard:** cETL,RoHS

# PREMIUM LED

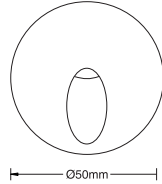
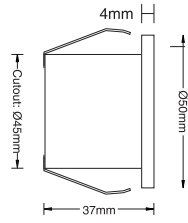
## Dimmable RGB LED Puck Light

**PLPRGBWH**

- **Model:** PLPRGBWH
- **Input Voltage:** 12V/DC
- **Power Consumption:** 1.4W
- **CRI:** Ra>80
- **Trim Colour:** White, Multi Link
- **Beam Angle:** 110 Degree
- **Remote Control:** RGB 24Keys Wireless Remote
- **Fixture Colour:** White
- **Package Quantity:** 3 In pack
- **Environment:** Indoor Use Only
- **Life Time:** 50,000Hours
- **Cutting Diameter:** 2.30 Inch
- **Warranty:** 3 Years
- **Standard:** cETL, RoHS



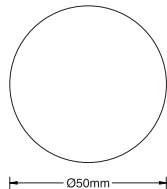
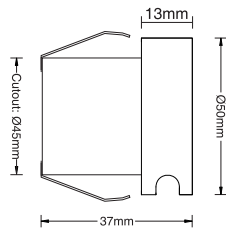
- **Remote Control:** RGB 24Keys Wireless Remote
- **Colour Options:** Supporting 16 Colours, 4 Colour Changing Mode



### Feature:



.Integrated fixture, easy installation, no trim and can required.  
 .high quality housing, good heat dissipation.  
 .North American standard junction box inside, easy wiring.  
 .ETL/cETL approved.  
 .5 Years Warranty.



### Feature:



.Integrated fixture, easy installation, no trim and can required.  
 .high quality housing, good heat dissipation.  
 .North American standard junction box inside, easy wiring.  
 .ETL/cETL approved.  
 .5 Years Warranty.

## LED Stair Light Round

SRF3K2W

- **Model:** SRF3K2W
- **Input Voltage:** 24V/DC
- **Power Consumption:** 1W
- **CRI:** Ra>80
- **Luminous:** 80Lm
- **Operating Temperature:** Max Ta= 45°C
- **Colour Temperatures:** 3000K, Warm White
- **Beam Angle:** 45 Degree
- **Fixture Colour:** White / Black / Silver
- **IP Grade:** IP 21
- **Environment:** Indoor
- **Life Time:** 50,000Hours
- **Material:** Aluminum
- **Warranty:** 5 Years
- **Standard:** cETL, RoHS, CE

# PREMIUM LED

## LED Stair Light Round

SR3K2W

- **Model:** SR3K2W
- **Input Voltage:** 24V/DC
- **Power Consumption:** 1W
- **CRI:** Ra>80
- **Luminous:** 80Lm
- **Operating Temperature:** Max Ta= 45°C
- **Colour Temperatures:** 3000K, Warm White
- **Beam Angle:** 45 Degree
- **Fixture Colour:** White
- **IP Grade:** IP21
- **Environment:** Indoor
- **Life Time:** 50,000Hours
- **Material:** Aluminum
- **Warranty:** 5 Years
- **Standard:** cETL, RoHS, CE



## Mini Step Light LED

**ALED-RDI-I-2**

- **Model:** ALED-RD-I-2
- **Input Voltage:** 12V/DC
- **Power Consumption:** 1W
- **CRI:** Ra>80
- **Luminous:** 90Lm
- **Colour Temperatures:** 3000K, Warm White
- **Beam Angle:** 45 Degree
- **IP Grade:** IP 67
- **Environment:** Waterproof
- **Warranty:** 5 Years
- **Standard:** cETL

### Feature:



.Integrated fixture, easy installation, no trim and can required.  
 .high quality housing, good heat dissipation.  
 .North American standard junction box inside, easy wiring.  
 .ETL/cETL approved.  
 .5 Years Warranty.

# PREMIUM LED



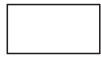
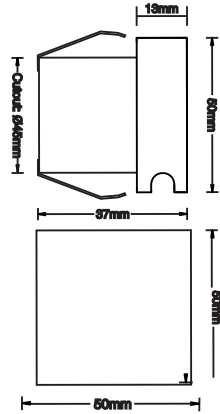
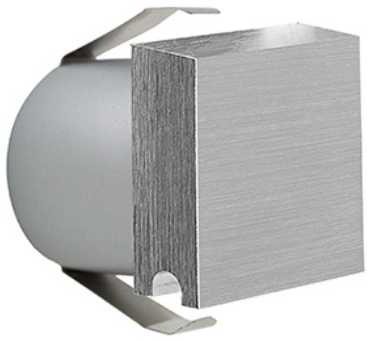
## Mini Step Light Trims

- **Model:** Round & Square Trims
- **Compatibility:** With RD12 Series Mini Step Light
- **Environment:** Indoor/Outdoor
- **Colours:** White/Black/Silver
- **Shape:** Round/Square

### Feature:



.Integrated fixture, easy installation, no trim and can required.  
 .high quality housing, good heat dissipation.  
 .North American standard junction box inside, easy wiring.



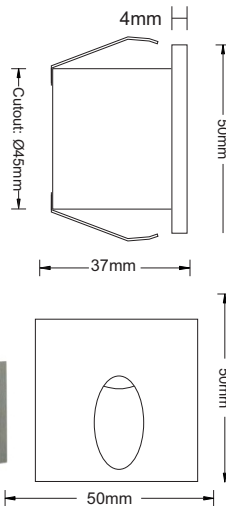
White



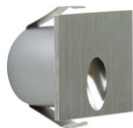
### Feature:



.Integrated fixture, easy installation, no trim and can required.  
 .high quality housing, good heat dissipation.  
 .North American standard junction box inside, easy wiring.  
 .ETL/cETL approved.  
 .5 Years Warranty.



White



### Feature:



.Integrated fixture, easy installation, no trim and can required.  
 .high quality housing, good heat dissipation.  
 .North American standard junction box inside, easy wiring.  
 .ETL/cETL approved.  
 .5 Years Warranty.

## LED Stair Light Round

**SS3K2W**

- **Model:** SS3K2W
- **Input Voltage:** 24V/DC
- **Power Consumption:** 1W
- **CRI:** Ra>80
- **Luminous:** 80 LM/W
- **Operating Temperature:** Max Ta= 45°C
- **Colour Temperatures:** 3000K, Warm White
- **Beam Angle:** 45 Degree
- **Fixture Colour:** White
- **IP Grade:** IP 21
- **Environment:** Indoor
- **Life Time:** 50,000 Hours
- **Material:** Aluminum
- **Warranty:** 5 Years
- **Standard:** ETL, RoHS, CE

## PREMIUM LED

## LED Stair Light Round

**SSFK2W**

- **Model:** SSFK2W
- **Input Voltage:** 24V/DC
- **Power Consumption:** 1W
- **CRI:** Ra>80
- **Luminous:** 80 LM/W
- **Operating Temperature:** Max Ta= 45°C
- **Colour Temperatures:** 3000K, Warm White
- **Beam Angle:** 45 Degree
- **Fixture Colour:** White
- **IP Grade:** IP 21
- **Environment:** Indoor
- **Life Time:** 50,000 Hours
- **Material:** Aluminum
- **Warranty:** 5 Years
- **Standard:** ETL, RoHS, CE

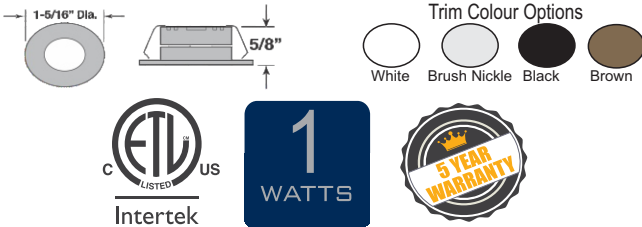
**Slim Puck Mini MPK3K-WH/BL/BR/BN**  
**MPK3K-WH/BL/BR/BN**

- **Model:** MPK\*KWH Slim Puck Mini
- **Input Voltage:** 24VDC
- **Material:** Aluminum +PMMA
- **Colour Temperatures:** 3000K - Warm White
- **Luminous Flux:** 90Lm
- **Dimension:** 1-5/16" Diameter, 5/8" Height
- **Trim Colour Options:** White/Black/Brush Nickle/Brown
- **Standard:** cETL
- **Warranty:** 5 Years

**PREMIUM**  
**LED**

**Transformer Box EBOX-75W**  
**EBOX-75W**

- **Model:** EBOX-75W
- **Input Voltage:** 120 50/60 Hz V DC
- **Output:** 12V AC 75 W
- **Specification:** Halogen Class 2 Power Supply
- **Dimmable:** Yes
- **Material:** Aluminum
- **Warranty:** 5 Years
- **Standard:** cETL



**Feature:**

- .Integrated fixture, easy installation, no trim and can required.
- .high quality housing, good heat dissipation.
- .1watt with high brightness COB light source.
- .North American standard junction box inside, easy wiring.
- .ETL/cETL approved.
- .5 Years Warranty.

**LED**



**Feature:**

- .Integrated fixture, easy installation, no trim and can required.
- .high quality housing, good heat dissipation.
- .North American standard junction box inside, easy wiring.
- .ETL/cETL approved.
- .5 Years Warranty.

**LED**

## Dimmable Gimbal Down Light

AFRGD-09-4"

- **Model:** AFR4GD-09-3CCT-WH
- **Specification:** 120V/AC - 60Hz
- **Energy Used:** 9W
- **CRI:** Ra>80
- **Luminous Flux:** Up to 700Lm
- **Equivalent to:** 60W Halogen
- **Operating Temperature:** -40°C +40°C
- **Colour Temperatures:** 3000K/4000K/5000K
- **Beam Angle:** 40 Degree, Adjustable
- **Approved Location:** Damp
- **Life Time:** 35,000Hours
- **Product Size:** D5x1.06 Inch
- **Cut Out:** 4.12 Inch
- **Warranty:** 5 Years
- **Standard:** cETL



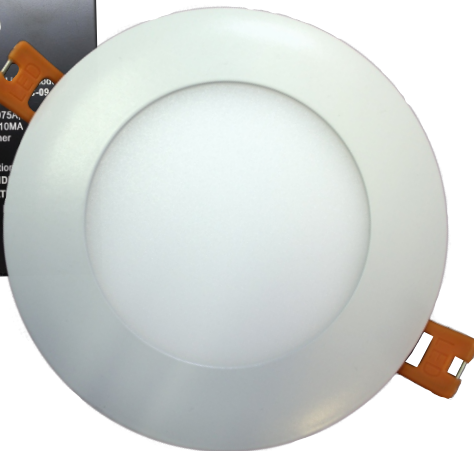
Trim Colour Options:



### Feature:



- .Ingrated fixture, easy installation, no trim and can required.
- .high quality housing, good heat dissipation.
- .9 watt 700lum with high brithness COB light source.
- .Isolated constant current driver, Instant-on, on warm up time.
- .North American standard junction box inside, easy wiring.
- .ETL/cETL approved.
- .5 Years Warranty.
- .Dimmable 5%-100% smoothly when using triac dimmers.



Trim Colour Options:



### Feature:



- .Ingrated fixture, easy installation, no trim and can required.
- .high quality housing, good heat dissipation.
- .9 watt 700lum with high brithness COB light source.
- .Isolated constant current driver, Instant-on, on warm up time.
- .North American standard junction box inside, easy wiring.
- .ETL/cETL approved.
- .5 Years Warranty.
- .Dimmable 5%-100% smoothly when using triac dimmers.

## PREMIUM LED

## Dimmable Slim LED Down Light

AFRA4-09-4"

- **Model:** AFR4-09-3CCT
- **Specification:** 120V/AC - 60Hz
- **Energy Used:** 9W
- **CRI:** Ra>80
- **Luminous Flux:** Up to 750Lm
- **Equivalent to:** 60W Halogen
- **Operating Temperature:** -40°C +40°C
- **Colour Temperatures:** 3000K/4000K/5000K
- **Beam Angle:** 110 Degree
- **Approved Location:** Damp
- **Life Time:** 35,000Hours
- **Cut Out:** 4.12 Inch
- **Product Size:** D5x1.06 Inch
- **Warranty:** 5 Years
- **Standard:** cETL



6"



### Feature:



- .Integrated fixture, easy installation, no trim and can required.
- .high quality housing, good heat dissipation.
- .North American standard junction box inside, easy wiring.
- .ETL/cETL approved.
- .5 Years Warranty.



4"



### Feature:



- .Integrated fixture, easy installation, no trim and can required.
- .high quality housing, good heat dissipation.
- .North American standard junction box inside, easy wiring.
- .ETL/cETL approved.
- .5 Years Warranty.

## Dimmable LED Disk Light

**KCN-AC-19-M18W-90-H**

- **Model:** KCN-AC-19-M18W-90-H
- **Input Voltage:** 120V, 60Hz AC Operation
- **Power Consumption:** 18W, 54 LED Chips
- **CRI:** Ra>90
- **Luminous:** 1150Lm
- **Diffuser:** Translucent White PC Opal Diffuser
- **Colour Temperature:** 3000K, Warm White
- **Fixture Colour:** White
- **Size:** D= 190mm\*77mm
- **Environment:** Indoor
- **Life Time:** 50,000Hours
- **Material:** Plastic
- **Warranty:** 5 Years
- **Standard:** cETL

# PREMIUM LED

## Surface Mount Disk Light

**KCN-AC-13-M10W-90-H-4"**

- **Model:** KCN-AC-13-M10W-90-T
- **Input Voltage:** 120V, 60Hz AC Operation
- **Power Consumption:** 10W, 30 LED Chips
- **CRI:** Ra>90
- **Luminous:** 700Lm
- **Source:** SMD 2835
- **Colour Temperature:** 3000K, Warm White
- **Fixture Colour:** White
- **Size:** D= 5.19", H=2.99"
- **Environment:** Dry Location
- **Life Time:** 50,000Hours
- **Light Efficiency:** 60-70LM/W
- **Warranty:** 5 Years
- **Standard:** cETL



### Feature:



- .Integrated fixture, easy installation, no trim and can required.
- .high quality housing, good heat dissipation.
- .North American standard junction box inside, easy wiring.
- .ETL/cETL approved.
- .5 Years Warranty.



### Feature:



- .Integrated fixture, easy installation, no trim and can required.
- .high quality housing, good heat dissipation.
- .North American standard junction box inside, easy wiring.
- .ETL/cETL approved.
- .5 Years Warranty.

## LED Gimbal Downlight 6"

**KDY-CA-19J-M16.5W-T-90-T**

- **Model:** KDY-CA-19J-M16.5W-T-90-T
- **Input Voltage:** 120V, 60Hz AC Operation
- **Power Consumption:** 16.5W, 1 LED Chips
- **CRI:** Ra>90
- **Luminous:** 1155Lm
- **Driver:** Dimmable Isolated Driver
- **Colour Temperature:** 3000K, Warm White
- **Fixture Colour:** White
- **Size:** D= 190mm\*88mm
- **Environment:** Indoor
- **Life Time:** 50,000Hours
- **Lumen Efficiency:** 60-70Lm/W
- **Warranty:** 5 Years
- **Standard:** cETL

# PREMIUM LED

## LED Rope Light

**Rope Light 150FT**

- **Model:** Rope Light 150FT
- **Input Voltage:** 120V, 60Hz AC Operation
- **Power Consumption:** 10W, 30 LED Chips
- **Colour Temperature:** 2700K/3000K/6000K
- **Length:** 150 FT
- **Warranty:** 5 Years
- **Standard:** cUL Approved

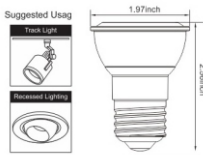




### Feature:



.Integrated fixture, easy installation, no trim and can required.  
.high quality housing, good heat dissipation.  
.North American standard junction box inside, easy wiring.  
.ETL/cETL approved.  
.5 Years Warranty.



### Feature:



.Integrated fixture, easy installation, no trim and can required.  
.high quality housing, good heat dissipation.  
.North American standard junction box inside, easy wiring.  
.ETL/cETL approved.  
.3 Years Warranty.

## LED Bulb Par20, E26, 3000/6000K LEDPAR207W

- **Model:** LEDPAR207W - PAR20, 3000K
- **Input Voltage:** 120 V
- **Power Consumption:** 7 W
- **Luminous:** 630 LM
- **Colour Temperatures:** 3000/6000K, Warm/Cool White
- **Dimmable:** Yes
- **Life Time:** 40,000 Hours
- **Standard:** cETL Listed, Mercury Free

## PREMIUM LED

## LED Bulb Par16, E26, 3000 K

Lorna

- **Model:** PAR16, 3000K LED Bulb - Lorna
- **Input Voltage:** 120 V
- **Power Consumption:** 7 W
- **Dimension:** 1.97"\*2.56"
- **Luminous:** 550 LM
- **Amperage Capacity:** 63 Micro Amps
- **Colour Temperatures:** 3000K, Warm White
- **Beam Angle:** 40 Degree
- **Fixture Colour:** White
- **CRI:** >80
- **Dimmable:** Yes
- **Life Time:** 15,000 Hours
- **Manufacturer Code:** 600191600050
- **Warranty:** 3 Years
- **Standard:** cETL Listed, Mercury Free



**2.4**  
WATTS



**Feature:**

- .Integrated fixture, easy installation, no trim and can required.
- .high quality housing, good heat dissipation.
- .2.4 watt 90lum with high brightness COB light source.
- .Isolated constant current driver, Instant-on, on warm up time.
- .North American standard junction box inside, easy wiring.
- . cUL approved.
- .5 Years Warranty.

**LED**



**2.4**  
WATTS



**Feature:**

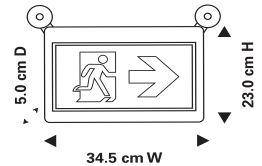
- .Integrated fixture, easy installation, no trim and can required.
- .high quality housing, good heat dissipation.
- .2x1.2 watt 90lum with high brightness COB light source.
- .Isolated constant current driver, Instant-on, on warm up time.
- .North American standard junction box inside, easy wiring.
- .5 Years Warranty.

**LED**

**Exit and Emergency Light**

**EX12V2X3W-120.347V**

- **Model:** EX12V2x3W-120.347V
- **Specification:** AC 120 and Battery Powered
- **Energy Used:** 2.4W
- **Working Time:** 90 Minutes Back Up Battery
- **Luminous:** 90 LM
- **Colour Temperatures:** 6500 Kelvin
- **Approved Location:** Indoor Use Only
- **Product Size:** 34.5"x23"x5.5"
- **Warranty:** 5 Years
- **Standard:** CUL Listed

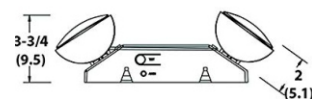
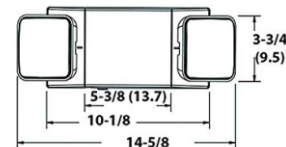


**PREMIUM**  
**LED**

**LED Emergency Light**

**EL2X2W90**

- **Model:** EL2X2W90
- **Specification:** AC 120 and Battery Powered
- **Energy Used:** 2X1.2W
- **Working Time:** 90 Minutes Back Up Battery
- **Luminous:** 90 LM
- **Colour Temperatures:** 6500 Kelvin
- **Approved Location:** For Damp Location
- **Warranty:** 5 Years



Weight: 4 lbs. (1.82 kgs.).

## Under Cabinet LED Light - PT51F

PT51F

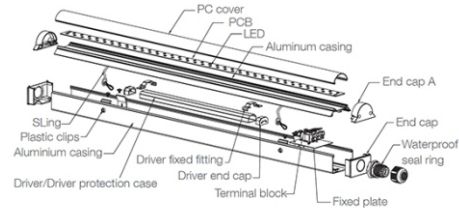
- **Model:** Adjustable T5 LED, PT51F- 1 Feet
- **Specification:** 120 VAC, 50/60 Hz
- **Wattage:** 4 Watt
- **Colour Temp Options:** 3000K/4000K/5000K
- **Approved Location:** Dry Locations
- **Product Size:** 12 Inch
- **Standard:** CUL Listed, CSA Approved, cETL



### Feature:



- .Integrated fixture, easy installation, no trim and can required..
- .4watt with adjustable colour temperature (3000K/4000K/5000K)
- .Isolated constant current driver, Instant-on, on warm up time.
- .North American standard junction box inside, easy wiring.
- .cUL, cETL, CSA approved.



# PREMIUM LED

## Under Cabinet LED Light - PT52F

PT52F

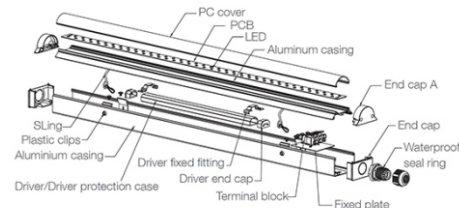
- **Model:** Adjustable T5 LED, PT52F- 2 Feet
- **Specification:** 120 VAC, 50/60 Hz
- **Wattage:** 7 Watt
- **Colour Temp Options:** 3000K/4000K/5000K
- **Approved Location:** Dry Locations
- **Product Size:** 24 Inch
- **Standard:** CUL Listed, CSA Approved, cETL



### Feature:



- .Integrated fixture, easy installation, no trim and can required..
- .7watt with adjustable colour temperature (3000K/4000K/5000K)
- .Isolated constant current driver, Instant-on, on warm up time.
- .North American standard junction box inside, easy wiring.
- .cUL, cETL, CSA approved.



# PREMIUM LED

## Under Cabinet LED Light - PT53F

PT53F

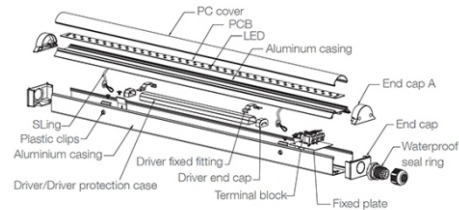
- **Model:** Adjustable T5 LED, PT53F- 3 Feet
- **Specification:** 120 VAC, 50/60 Hz
- **Wattage:** 12 Watt
- **Colour Temp Options:** 3000K/4000K/5000K
- **Approved Location:** Dry Locations
- **Product Size:** 36 Inch
- **Standard:** CUL Listed, CSA Approved, cETL



### Feature:



- .Integrated fixture, easy installation, no trim and can required..
- .4watt with adjustable colour temperature (3000K/4000K/5000K)
- .Isolated constant current driver, Instant-on, on warm up time.
- .North American standard junction box inside, easy wiring.
- . cUL, cETL, CSA approved.



# PREMIUM LED

## Under Cabinet LED Light - PT54F

PT54F

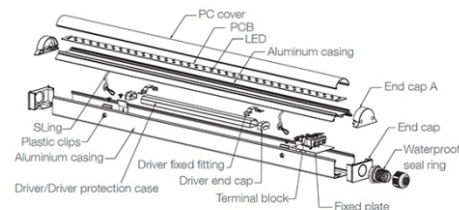
- **Model:** Adjustable T5 LED, PT54F-4 Feet
- **Specification:** 120 VAC, 50/60 Hz
- **Wattage:** 15 Watt
- **Colour Temp Options:** 3000K/4000K/5000K
- **Approved Location:** Dry Locations
- **Product Size:** 48 Inch
- **Standard:** CUL Listed, CSA Approved, cETL



### Feature:



- .Integrated fixture, easy installation, no trim and can required..
- .7watt with adjustable colour temperature (3000K/4000K/5000K)
- .Isolated constant current driver, Instant-on, on warm up time.
- .North American standard junction box inside, easy wiring.
- . cUL, cETL, CSA approved.



# PREMIUM LED



50 WATTS



50 WATTS



50 WATTS



50 WATTS

Trim Par 16 Gimbal 4 Inch Matt White  
**TH-4018T-MW**

- **Model:** TH-4018T-MW - Prolite
- **Specification:** 120 Volt
- **Wattage:** 50 W Max
- **Lamp Type :** PAR 16
- **Size:** 4 Inch
- **Colour:** Matt White

Trim Par 16 Gimbal 4 Inch Shiny White  
**TH-4018T-SW**

- **Model:** TH-4018T-SH - Prolite
- **Specification:** 120 Volt
- **Wattage:** 50 W Max
- **Lamp Type :** PAR 16
- **Size:** 4 Inch
- **Colour:** Shiny White

Trim Par 16 Gimbal 4 Inch Brown  
**TH-4018T-BR**

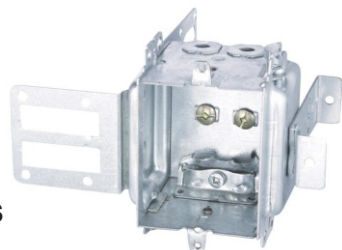
- **Model:** TH-4018T-BR - Prolite
- **Specification:** 120 Volt
- **Wattage:** 50 W Max
- **Lamp Type :** PAR 16
- **Size:** 4 Inch
- **Colour:** Brown

Trim Par 16 Gimbal 4 Inch Shiny Black  
**TH-4018T-B**

- **Model:** TH-4018T-B - Prolite
- **Specification:** 120 Volt
- **Wattage:** 50 W Max
- **Lamp Type :** PAR 16
- **Size:** 4 Inch
- **Colour:** Black

# Gangable Device Box

Metallic Box



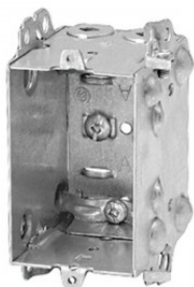
3104-LS



## Gangable Device Box 3104-LSSX

**3104-LSSX**

- **Model:** Gangable Device Box 3104-LSSX
- **Size:** 3" x 2" x 2.5", 1 Gang
- **Specification:** 3 Inches H x 2 Inches W x 2-1/2 Inches D  
16 Cubic Inches Volume.  
Wraparound bracket for 2-1/2" and 3-5/8" steel studs.  
Clamps for armoured cable or Nonmetallic sheathed cable.  
With integral support bracket
- **Material:** Galvanized steel
- **Standard:** cETL Approved



1104-LHT



## Gangable Device Box 1104-LHT

**1104-LHT**

- **Model:** Gangable Device Box 1104-LHT
- **Size:** 3" x 2" x 2.5", 1 Gang
- **Specification:** Gangable box 3" H x 2" W x 2-1/2" D  
12.5 Cubic Inches Volume.  
Clamps for nonmetallic sheathed cable or armoured cable.  
Extended sides for external nailing.
- **Material:** Galvanized steel
- **Standard:** cETL Approved



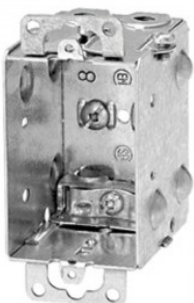
1104-LRB



## Gangable Device Box 1104-LRB

**1104-LRB**

- **Model:** Gangable Device Box 1104-LRB
- **Size:** 3" x 2" x 3", 1 Gang
- **Specification:** Gangable box 3" H x 2" W x 2-1/2" D  
12.5 Cubic Inches Volume. Flush ears.  
Clamps for nonmetallic sheathed cable or armoured cable and pivoting ends for rework installation.
- **Material:** Galvanized steel
- **Standard:** cETL Approved



1104-LA



## Gangable Device Box 1104-LA

**1104-LA**

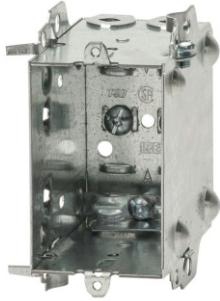
- **Model:** Gangable Device Box 1104-LA
- **Size:** 3" x 2" x 2.5", 1 Gang
- **Specification:** Gangable box 3" H x 2" W x 2-1/2" D  
12.5 Cubic Inches Volume.  
Ears back, flat sides suitable for indoor/outdoor walls.  
Flush Ears.
- **Material:** Galvanized steel
- **Standard:** cETL Approved

# Gangable Device Box

Metallic Box



1004-LH



## Gangable Device Box 1004-LH

1004-LH-NMD90

- **Model:** Gangable Device Box 1004-LH
- **Size:** 3" x 2" x 3", 1 Gang
- **Specification:** Positioning tabs.  
Provision for external nailing.  
Two embossed mounting slots for internal screw installation
- **Thickness:** 1.2mm & 1.3mm
- **Material:** Galvanized steel
- **Standard:** cETL Approved

1004-L



## Gangable Device Box 1004-L

1004-L-NMD90

- **Model:** Gangable Device Box 1004-L
- **Size:** 3" x 2" x 3", 1 Gang
- **Specification:** Positioning tabs.  
Provision for external nailing.  
Two embossed mounting slots for internal screw installation
- **Thickness:** 1.2mm & 1.3mm
- **Material:** Galvanized steel
- **Standard:** cETL Approved

1102-L



## Gangable Device Box 1102-L

1102-L-NMD90

- **Model:** Gangable Device Box 1102-L
- **Size:** 3" x 2" x 3", 1 Gang
- **Specification:** Positioning tabs.  
Provision for external nailing.  
Two embossed mounting slots for internal screw installation
- **Thickness:** 1.2mm & 1.3mm
- **Material:** Galvanized steel
- **Standard:** cETL Approved

1104-L



## Gangable Device Box 1104-L

1104-L-NMD90

- **Model:** Gangable Device Box 1104-L
- **Size:** 3" x 2" x 2.5", 1 Gang
- **Specification:** Positioning tabs.  
Provision for external nailing.  
Two embossed mounting slots for internal screw installation
- **Thickness:** 1.2mm & 1.3mm
- **Material:** Galvanized steel
- **Standard:** cETL Approved

# Octagonal Box

Metallic Box

54151-K

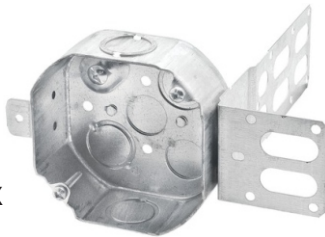


## Octagon Device Box 54151-K

### 54151-K Box 4" Octagon

- **Model:** 54151-K Box4" Octagon
- **Size:** 4" Diameter x 1.5" Depth
- **Specification:** Octagonal Box 4"x 4" x 1-1/2" 15" Cubic Concentric knockouts
- **Knockout Size:** (4) 1/2"Bottom, (2) 3/4"Bottom, (4) 1/2"Side,(2) 3/4" Side
- **Capacity:** 15 Cub.Inch
- **Knockout Location:** (6) Bottom,(6) Side
- **Standard:** cETL Approved

54151-KSSX



## Octagon Device Box 54151-KSSX

### 54151-KSSX Box 4" Octagon

- **Model:** 54151-KSSX Box 4" Octagon
- **Size:** 4" Diameter x 1.5" Depth
- **Specification:** Octagonal Box 4"x 4" x 1-1/2" 15" Cubic Concentric knockouts
- **Knockout Size:** (6) (1/2"- 3/4") Concentric knockouts, (4) (1/2"- 3/4") Concentric Side
- **Capacity:** 15 Cub.Inch
- **Knockout Location:** (6) Bottom,(4) Side
- **Standard:** cETL Approved

54151-L



## Octagon Device Box 54151-L

### 54151-L Box4" Octagon

- **Model:** 54151-L Box 4" Octagon
- **Size:** 4" Diameter x 1.5" Depth
- **Specification:** 15 cubic inch Propositioned depth tabs recessed 1/2 inches
- **Knockout Size:** (5) (1/2"- 3/4") Concentric Bottom, (6) (1/2" - 3/4") Concentric Side
- **Capacity:** 15 Cub.Inch
- **Knockout Location:** (5) Bottom,(6) Side
- **Standard:** cETL Approved

54151-LA



## Octagon Device Box 54151-LA

### 54151-LA Box4" Octagon

- **Model:** 54151-L Box 4" Octagon
- **Size:** 4" Diameter x 1.5" Depth
- **Specification:** Octagonal Box 4"x 4" x 1-1/2" 15 cubic inches
- **Knockout Size:** (7) 1/2 Inch Bottom/Side
- **Capacity:** 15 Cub.Inch
- **Knockout Location:** (5) Bottom,(6) Side
- **Standard:** cETL Approved



# Octagonal Box

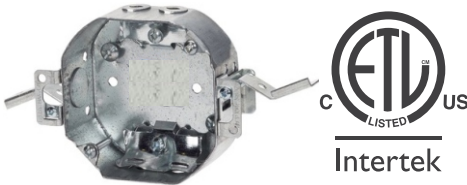
Metallic Box

## Octagon Device Box 54151-LD

### 54151-LD Box 4" Octagon

- **Model:** 54151-LD Box 4" Octagon
- **Size:** 4" Diameter x 1.5" Depth
- **Specification:** Rework octagonal box  
4"x 4" x 1-1/2"  
Loomex 15 cubic inches
- **Capacity:** 15 Cub.Inch
- **Knockout Location:** (1) Bottom,(4) End
- **Standard:** cETL Approved

54151-LD



## Octagon Device Box 54151-LSSAX

### 54151-LSSAX Box4" Octagon

- **Model:** 54151-LSSAX Box 4" Octagon
- **Size:** 4" Diameter x 1.5" Depth
- **Specification:** Steel Stud Octagonal Box 4"x 4"x 1-1/2"  
Wraparound bracket for 2-1/2"and  
3-5/8" steel studs.  
With integral support bracket
- **Capacity:** 15 Cub.Inch
- **Knockout Location:** (1) Bottom,(4) Side
- **Standard:** cETL Approved

54151-LSSAX



## Pancake Box 1/2 Inch Deep

### 54151-LA Box4" Octagon

- **Model:** 54151-L Box 4" Octagon
- **Size:** 4" Diameter x 0.5" Depth
- **Specification:** Ceiling pan 4 inches X 1/2 inch  
deep, 5.0 cubic inches
- **Knockout Size:** (4) 1/2 Inch Bottom
- **Capacity:** 5 Cub.Inch
- **Knockout Location:** (4) Bottom
- **Standard:** cETL Approved

56111



# Octagonal Box

Metallic Box

# Gangable Device Box

Metallic Box



1100-L



## Gangable Device Box 1100-L

1100-L

- **Model:** Gangable Device Box 1100-L
- **Size:** 3 in. x 2 in. x 1 1/2 in
- **Specification:** Shallow device boxes mainly used for: receptacle installation in end of run or in confined areas
- **Volume:** 8 Cubic. Inch
- **Material:** Galvanized steel
- **Standard:** cETL Approved



1110



## Gangable Device Box 1110

1110

- **Model:** Gangable Device Box 1110
- **Size:** 4 x 2 3/8 x 1 7/8 in, 1 Gang
- **Specification:** To install a switch, receptacle onto a surface
- **Volume:** 8 Cubic. Inch
- **Material:** Galvanized steel
- **Standard:** cETL Approved



1110-R



## Gangable Device Box 1110-R

1110-R

- **Model:** Gangable Extension Box 1110-R
- **Size:** 4 in. x 2 3/8 in. x 1 7/8 in, 1 Gang
- **Specification:** Specially designed for surface-mounted installation of a single device, Mainly used with EMT, Extension Box
- **Material:** Galvanized steel
- **Standard:** cETL Approved



1102LH



## Gangable Device Box 1102-LH

1102-LH

- **Model:** Gangable Device Box 1102-LH
- **Size:** 3 inches x 2 inches x 2 inches , 1 Gang
- **Specification:** Gangable device box Two embossed mounting slots for internal screw installation
- **Volume :** 10 Cu.Inch Positioning for external nailing
- **Material:** Galvanized steel
- **Standard:** cETL Approved

# Gangable Device Box

Metallic Box



## Gangable Device Box 2104-LLE

2104-LLE

- **Model:** Gangable Device Box 2104-LLE
- **Size:** 3 inches x 2 inches x 2-1/2 inches
- **Specification:** Holding prongs and repositioned depth tabs
- **Number of Knockouts:** 4
- **Volume:** 12.5 cubic inches 1 Gang
- **Material:** Galvanized steel
- **Standard:** cETL Approved

## Gangable Device Box 2104-LLE2

2104-LLE2

- **Model:** Gangable Device Box 2104-LLE2
- **Size:** 3" x 3-3/4" x 2-1/2", 2 Gang
- **Specification:** Holding prongs and repositioned depth Knockout Location:8 (End)
- **Number of Knockouts:** 8
- **Volume:** 25 cubic inches 2 Gang
- **Material:** Galvanized steel
- **Standard:** cETL Approved

## Gangable Device Box 2104-LLE3

2104-LLE3

- **Model:** Gangable Device Box 2104-LLE3
- **Size:** 3"x 5-1/2" x 2-1/2", 3 Gang
- **Specification:** Holding prongs and repositioned depth Knockout Location:12 (End)
- **Number of Knockouts:** 12
- **Volume:** 37.5 cubic inches 3 Gang
- **Material:** Galvanized steel
- **Standard:** cETL Approved

## Gangable Device Box 2104-LLE4

2104-LLE4

- **Model:** Gangable Device Box 2104-LLE4
- **Size:** 3"x 5-1/2" x 2-1/2", 4 Gang
- **Specification:** Holding prongs and repositioned depth Knockout Location:16 (End)
- **Number of Knockouts:** 16
- **Volume:** 50 cubic inches 4 Gang
- **Material:** Galvanized steel
- **Standard:** cETL Approved

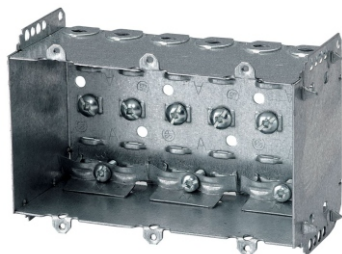
2104-LLE



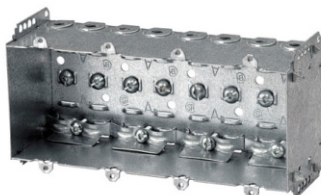
2104-LLE2



2104-LLE3



2104-LLE4



# Square Device Box

Metallic Box

5251-K



## Square Box 52151-K

**52151-K**

- **Model:** Square Box 52151-K
- **Size:** 4 inches x 4 inches x 1-1/2 inches
- **Specification:** (4) 1/2" (2) 3/4" Concentric Knockout Bottom, (10) 1/2", (6) 3/4" Concentric Knockout Side
- **Number of Knockouts:** 22
- **Volume:** 21 cubic inches
- **Material:** Galvanized steel
- **Standard:** cETL Approved

72171-K



## Square Box 72171-K

**72171-K**

- **Model:** Square Box 72171-K
- **Size:** 4-11/16" X 4-11/16" X 2-1/8"
- **Specification:** (4) 1/2" (2) 3/4" Concentric Knockout Bottom, (10) 1/2", (6) 3/4" Concentric Knockout Side
- **Number of Knockouts:** 22
- **Volume:** 42 cubic inches
- **Material:** Galvanized steel
- **Standard:** cETL Approved

52171-K

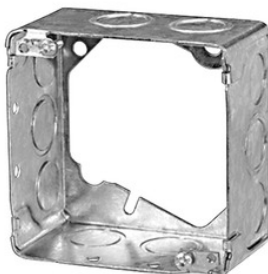


## Square Box 52171-K

**52171-K**

- **Model:** Square Box 52171-K
- **Size:** 4" height x 4" width x 2-1/8" depth
- **Specification:** Concentric knockouts. Raised ground screw K(6), 1/2"(6), 3/4"(2)
- **Number of Knockouts:** 22
- **Volume:** 30 cubic inches
- **Material:** Galvanized steel
- **Standard:** cETL Approved

53171-ER



## Square Box 53171-ER

**53-171-ER**

- **Model:** Square Box 53171-ER
- **Size:** 4 inches x 4 inches x 2-1/8 inches
- **Specification:** Extension for Concrete Rings Knockout Size(10) 1/2" Sides, (6) 3/4" Sides  
Number of Knockouts: 16
- **Volume:** 30 cubic inches
- **Material:** Galvanized steel
- **Standard:** cETL Approved

# Vapour Barrier

VB-1



## Vapour Barrier VB-1 One Gang

**VB-1**

- **Model:** Single Gang Vapour Barrier VB-1
- **Size:** 2" x 3" x Up to 3" Deep
- **Specification:** Sealing insert for built-in installation box
- **Material:** Soft Polyethelene
- **Standard:** CSA Approved

VB-2



## Vapour Barrier VB-2 Two Gang

**VB-2**

- **Model:** Double Gang Vapour Barrier VB-2
- **Size:** 7.5" L x 7.5" W x 2.75" H
- **Specification:** Vapour barriers are used to cover: electrical boxes, lighting fixtures, exhaust fans prevent condensation
- **Material:** Soft Polyethelene
- **Standard:** CSA Approved

VB-3



## Vapour Barrier VB-3 Three Gang

**VB-3**

- **Model:** Triple Gang Vapour Barrier VB-3
- **Size:** For 3 gang 2" x 3" device boxes up to 3D
- **Specification:** Sealing insert for built-in installation box
- **Material:** Soft Polyethelene
- **Standard:** CSA Approved

VB20178-4G



## Vapour Barrier VB20178 4G

**VB20178 4G**

- **Model:** Vapour Barrier-4 Gang VB20178 4 Gang
- **Size:** 2"x 3" Device boxes up to 3" deep
- **Specification:** Vapour barrier - soft Polyethelene for 4 Gang
- **Material:** Soft Polyethelene
- **Standard:** CSA Approved

# Vapour Barrier

VBE300



## Vapour Barrier VBE300

**VBE300**

- **Model:** VBE300
- **Size:** 22-1/2" L x 19" W x 9-1/8" H
- **Specification:** Be300 Vapour Barrier For IC
- **Features:** 90° C. Linear low Polyethylene For Fans and Recessed Fixtures
- **Material:** Soft Polyethelene
- **Standard:** CSA Approved

VB-6-POT



## Vapour Barrier VB-6-POT-Prolite

**VB-6-POT**

- **Model:** Vapour Barrier VB-6-POT-Prolite
- **Size:** 16" L x 7-1/4" W x 5-3/4" H
- **Specification:** Adhesive Mounting Collar, 4-1/4" For 4" retrofit IC fixtures
- **Material:** Soft Polyethelene
- **Standard:** CSA Approved

VB4-Octagon



## Vapour Barrier VB4-Octagon

**VB4-Octagon**

- **Model:** Vapour Barrier VB4-Octagon
- **Size:** For up to 2-1/8" Deep Octagonal Boxes
- **Specification:** To avoid moisture and Cold air infiltration through the box
- **Material:** Soft Polyethylene
- **Standard:** CSA Approved

### Housing IC 3.5 Inch Retrofit

**WL-3509B-IC-E26**

• Model: WL-3509B-IC-E26

### Housing IC 4 Inch Retrofit

**WL-409-ICAT**

• Model: WL-409-ICAT

### Housing IC 4 Inch New Construction

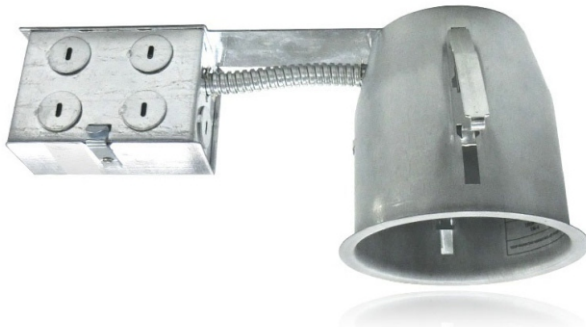
**WL-403-ICAT-T**

• Model: WL-403-ICAT-T

### Housing Non-IC 4 Inch New Construction

**NON-IC WL-407-T**

• Model: NON-IC WL-407-T





**Mounting Plate 4 Inch with Lip**  
**P4000**

- **Model:** P4000 - Mounting Plate 4 Inch
- **General:** Constructed of galvanized steel, this 4" round opening pre-mounting
- **Mounting:** The plate includes mounting holes and tracks to satisfy any type of installation. Alignment notches on plate to help aligning multiple plates.

**PREMIUM**  
**LED**



**Feature:**

- . Integrated fixture, easy installation, no trim and can required.
- . high quality housing, good heat dissipation.
- . North American standard junction box inside, easy wiring.
- . ETL/cETL approved.
- . 5 Years Warranty.

