



**POWER BOX**



[WWW.BIGJOESTOMPBOXCOMPANY.COM](http://WWW.BIGJOESTOMPBOXCOMPANY.COM)

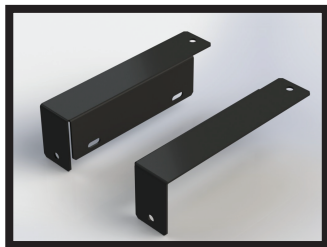
**PB-106 USER'S MANUAL**

## ACCESSORIES

### Other Accessories (sold separately)



Voltage Doubler Adapter



- Pedal Board Brackets (Universal)
- Pedal Board Brackets (Pedaltrain)



Current Doubler Adapter

## TABLE OF CONTENTS

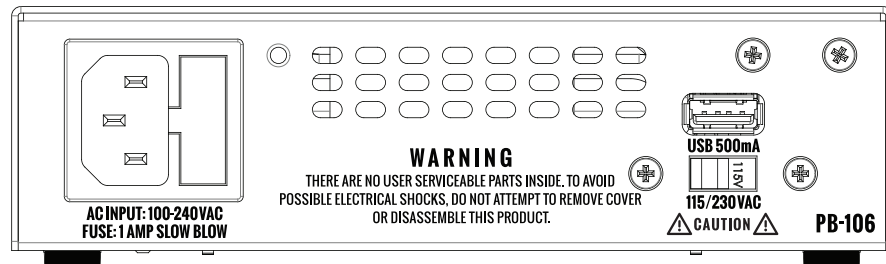
INTRODUCTION.....	1
BASIC OPERATION.....	3
GENERAL DESCRIPTION.....	4-6
TYPICAL CONNECTIONS.....	7-8
INSTALLING THE POWER BOX.....	9
POWER REQUIREMENTS.....	10
CONNECTORS.....	11-12
SPECIFICATIONS.....	13
WARRANTY.....	14
ACCESSORIES.....	15

## INSTALLING THE POWER BOX

Although the Big Joe Power Box can be used as a stand-alone power supply, the best and most common installation is on a pedal board. A pedal board application, allows you to securely attach the Power Box, and appropriate output connection cables, in a way that will protect everything, particularly the cables. One of the most common problems with non-pedal board applications is output connection cables wearing out due to constant stress and excessive flexing. A pedal board application allows you to secure and attach connection cables with Velcro, nylon cable wraps, twist ties etc. The foot print of the Big Joe Power Box is compatible with other pedal boards available from most manufactures, but works particularly well with our Big Joe Stomp Box Pedal Board.

*Bracket kits sold separately*

## BACK PANEL:



### 1. AC POWER INPUT PLUG

This is a standard, IEC type connector. Plug the power cable included into this jack and connect to standard AC wall outlet.

### 2. USB OUTPUT:

500mA USB output jack is available to power or charge any USB device: Iphone, laptop, pedal etc.

### 3. 115-230 VAC SWITCH:

Input voltage selector switch which allows you to set up Power Box for US or International usage.

**WARNING: TO AVOID DAMAGE TO POWER BOX BE SURE TO HAVE PROPER VOLTAGE SELECTED BEFORE YOU PLUG THE POWER BOX INTO WALL SOCKET AC POWER SOURCE.**

## CONNECTORS

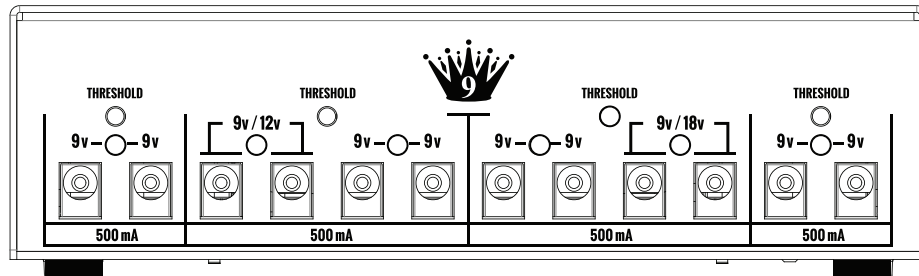
The Big Joe Power Box comes with a varied collection of interconnection cables. These cables should cover most stomp box and guitar effect applications you encounter (see Typical Connection Chart).

Most of today's stomp boxes and guitar effects are tip-negative, so the 12 black connector cables, 6 short, 6 long, should work in most instances. Simply plug them directly into your effect and the Big Joe Power Box. However, if you are not sure about your guitar effects polarity, you should consult with the manufacturer of your effect before plugging into the Big Joe Power Box. Otherwise you run the risk of damaging your effect.

If your effect is determined to be tip-positive then, depending on the size of the jack on your effect, one of the three reverse polarity colored cables (Red, Blue, Green) should work. If you have a stomp box which does not have a power jack at all, then you can still power it with the Big Joe Power Box by using the cable with the 9v battery snap.

## GENERAL DESCRIPTION

### FRONT PANEL:



#### 1. 9V, 500mA, TIP-NEGATIVE, POWER OUTPUTS:

There are 12 single point grounded 9v tip-negative power outputs available to power any of today's high power stomp box effects. These outputs are grouped into four 500mA isolated power blocks. 500mA can be drawn through any one of the single outputs in each block or distributed among the other outputs in the block.

## 2. THRESHOLD INDICATOR

The Power Box 2K can deliver 2000mA of clean, low noise, analog power. Power usage is optimized when it is evenly distributed among the four 500mA isolated power blocks. To help manage power allocation, each 500mA power block has a Threshold LED associated with it. The Power Box is operating most efficiently when these Threshold LEDs are not illuminated. When one or more of these LED lights up, it is an indication that your power consumption is exceeding 500mA from the block and, as such, you may need to de-rate the power available from the other blocks or rearrange your pedals outputs until the threshold LED turns off.

## 3. VOLTAGE INDICATOR LED'S

A 2-color, LED is associated with four of the twelve power supply outputs. These LED's change color depending on which output voltage is selected with the two position slide switch. Color indications are as follows: 9 volt - Blue, 12 and 18 volt - Red

## 4. 12V AND 18V:

Two (2), 2-position slide switches are located on the bottom of the Power Box that allows you to dedicate four outputs to high voltage usage: two 12v and two 18v.

## PEDAL DC REQUIREMENTS

Guitar effect manufactures typically do not specify the power usage requirements of their products. Usually the only data available is the power rating information listed on the AC adaptor included with the effect. While this does not tell you the exact input required by the effect, at least you know that the effect does not require more than the power output of the power supply included. If your guitar effect does not come with an AC adaptor, then you may not have any idea at all, but generally speaking, if your stomp box or effect can run on a 9v battery, it will likely require less than 60mA.

Some Distortion boxes require as little as 5mA while some older analog delays may pull closer to 50mA. So, since each of the outputs on the Big Joe Power Box can provide 500mA, you can easily power multiple effects from each of the Big Joe Power Box outputs.

## BASIC OPERATION

First thing is to attach the power cord to the back of the Big Joe Power Box unit and then plug the other end into an AC power outlet. As soon as you do this all the output LED's will illuminate in the color appropriate for the switch position selected. Most likely they will be all blue if you are using the unit out of the box for the first time. Once you have determined the appropriate voltage and polarity requirements of each guitar effect you want to power, you simply plug connector cables into the Power Box with the corresponding ends plugged into the effect you wish to power.

### ***IMPORTANT:***

***Reversed Polarity: Most of today's DC powered stomp boxes effects utilize a tip-negative polarity barrel jack which is consistent with all outputs on the Big Joe Power Box. However, in rare cases you may encounter a guitar effect that is wired for tip positive polarity – the opposite of the Big Joe Power Box. This is not a problem. You can still use your Big Joe Power Box to power these effects, but you need to understand that you must attach one of the Reverse Polarity cables (red, green or blue) provided.***

### **DAISY CHAIN CONNECTORS**

If you need more than 12-outputs, a tip-negative Daisy Chain cable can be connected to any one of the Power Box outputs. Depending on the power consumption of the effects you intend to run off the Daisy Chain, you can significantly expand the number of effects that you can power with the Big Joe Power Box. You can connect as many pedals as you want until the threshold LED lights up.

***It is also important to make sure that you utilize one of the reverse polarity connectors if you are attempting to power a tip-positive effect to one of the Daisy Chain outputs.***

## INTRODUCTION

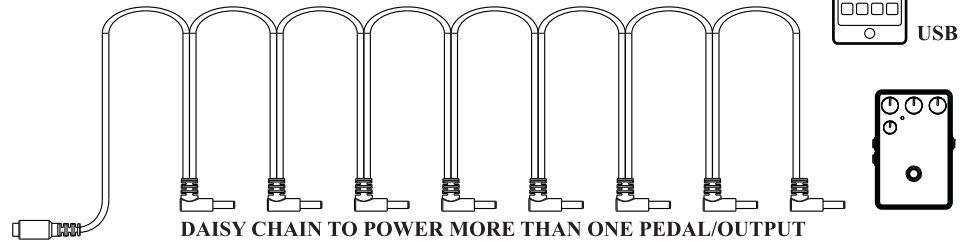
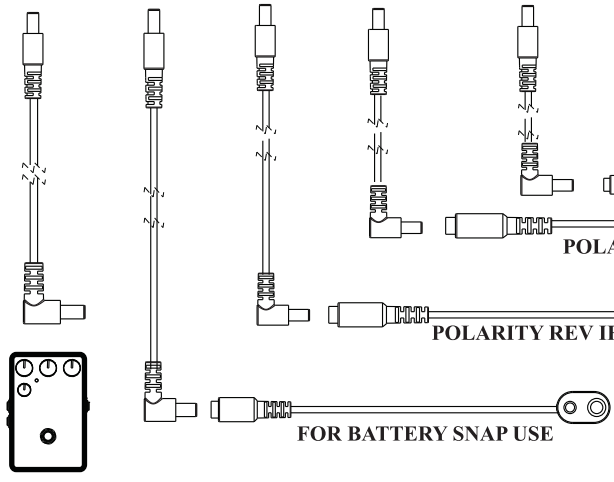
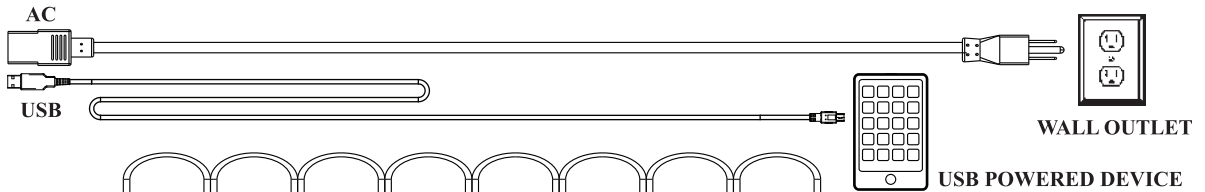
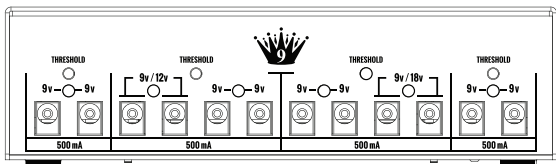
The Big Joe Power Box 2K offers isolated, noise free DC power outputs capable of providing power to any battery operated guitar effect. Isolated power is the best way to protect your signal path from unwanted noise and interference. Clock noise from digital effects, noisy distortion signals, oscillation artifacts, etc. are all problems that build up in your signal path when using a single power source to drive multiple effects. Wah Wah and Treble boost effects in particular are notorious for picking up noise.

The Big Joe Power Box 2K has four Isolated 500 mA blocks and twelve, single point grounded 9v power outputs with switch combinations to convert to 12v and 18v outputs options. The Power Box 2K also provides a 500mA USB output. Multi color individual LED's for each of the outputs makes it easy to see the voltage selected for each output. The Big Joe Power Box 2K is the ideal solution for all your power requirements.

## WARRANTY

All Big Joe products are proudly designed and engineered in the USA. We assemble, hand test and inspect every product that we ship. If there is ever a problem that is our fault, we will fix it free of charge. If the problem is from normal wear and tear then we will fix it for free but charge you for the replacement parts. If the problem is something you did then we will fix it and charge you whatever it costs to do so. The only thing we ask is that you don't attempt to fix anything yourself. There are no user serviceable parts inside the case. It's that simple.

Just register your Big Joe product online @  
[www.bigjoestompboxcompany.com/register](http://www.bigjoestompboxcompany.com/register)



POLARITY REV IF REQUIRED

POLARITY REV IF REQUIRED

FOR BATTERY SNAP USE

# TYPICAL CONNECTIONS



## SPECIFICATIONS

### Physical:

6.0" x 3.4" x 1.75"

Weight 2lbs

### Input:

IEC connector

115v 60Hz (North America)

230v 50Hz (European)

### Outputs:

- Four isolated 500mA power blocks
- 12 single point grounded outputs.
- 5.5mm x 2.1mm, center negative barrel, connectors.
- Short circuit protected.

## WHAT'S INSIDE

1 - Big Joe Power Box 2K

1 - Power cord

6 - Connector Cables,  
5.5mm X 2mm, male/male, short

6 - Connector Cables,  
5.5mm X 2mm,  
male/male, long

1 - Adapter Cable, 2.1mm,  
reverse polarity, female/male-red

1 - Adapter Cable, 2.5mm,  
reverse polarity, female/male-green

1 - Adapter Cable, 3.5mm,  
reverse polarity, female/male-blue

2 - Battery Snap Cables,  
9 volt adapter, black

