

## Longreef 90 SX

# YACHT WITH THE LOT

Embodying attributes drawn from the world's best motor yachts, the Longreef 90 SX is the product of hundreds of owners' experiences, brought to life in bright, bold, feature-filled technicolour, reveals **Jeni Bone**.







**A**mid the marina of masts assembled for Hamilton Island Race Week, the Longreef 90 SX cut an exotic figure. More than a few deckies laying out sails paused to watch her moor.

"It's hard not to notice," states a justifiably proud Andy Young, CEO of Longreef Yachts. "She's a lot of boat."

She's also the first 90-footer in the brand's line-up, which also includes a 50SX and 60SX. A syndicated yacht named *Carpe Diem*, this vessel has a full-time captain and stewardess on board, and every conceivable mod con is packed into her impressive length and girth.

Built in southern China, Longreef motor yachts are custom-designed and built from the hull up. "This boat is built to AMSA survey so it can be chartered out when its five owners aren't using it. It was a meticulous process, carried out over 12 months," Young continues. "We worked very closely with Gavin Clark from Slipstream Marine in Sydney."

The effort and attention to detail were worth it. *Carpe Diem* is a tribute to the vision, tenacity and 15 or so years of research that is the foundation of the other business Young and his wife Belinda have operated since 2009 – Boating Syndication Australia (BSA).



**This page:** Ash flooring and a subtle cream, brown and orange palette make for a warm but contemporary finish. The saloon and dining area (above) are separated from the helm by bookcases, while the aft end opens up to the cockpit for an inside-outside entertaining space.

The brand is now focused on larger boats, with another Longreef 90 due for delivery and well-progressed plans for a new 116-foot flagship. "Our designs draw on so many influences," says Young, "from our owners' wish lists to features from superyachts such as the deck spaces, as well as improvements we've made based on our own experiences."

One such enhancement is the sundeck spa pool that sits above the deck for ease of maintenance. "There's no waiting for costly trades – it's simply replaced when needed," says Young.



**Above:** The master suite offers clean and contemporary luxury, with a transverse bed nestling under the large hull ports and the aft, full-beam ensuite hidden behind switchable e-glass. The desk/vanity at the foot of the bed conceals a pop-up TV.



**Left:** The master ensuite's his-and-hers stone basins and the large oversized shower offer a Zen-like ambience.

//

A syndicated yacht named *Carpe Diem*, this vessel has a full-time captain and stewardess on board, and every conceivable mod con is packed into its impressive length and girth.

"The owners can use the upstairs galley while crew prepare meals down below," Young explains. With plenty of headroom and tinted windows, these are well-lit, air-conditioned crew quarters. Crew accommodation consists of a twin bunk cabin and ensuite with a separate shower.

The aft cockpit, which can be fully enclosed with clears for weather and mozzie protection, is set up with a traditional table complete with recessed cooler, and seating, chairs, ice-maker and Bose sound system. The expansive flybridge means the whole area is completely under cover.

The foredeck offers a table and built-in seating, and further forward, twin sunpads surround the skylight of the VIP below. The table and seating can convert to a daybed. Aft, bifold doors open to the beamy saloon for seamless entertaining.

The saloon offers a C-shaped leather lounge to port, facing custom-built cabinets for stemware and a wine fridge, which also conceals the pop-up, 75-inch flatscreen TV.

#### AT A GLANCE

**25.82 m**  
Overall length

**5.85 m**  
Beam

**56.2 t**  
Displacement (fully laden)

**22 kn**  
Maximum speed

*Carpe Diem* boasts lavish materials, generous spaces on deck and inside, and crew accommodation. "Owners don't want to be bothered with driving, refuelling or cleaning – they just want to relax with friends and family," Young says. "They want everything at their fingertips, just like their own private island."

The yacht was also designed and built without any concern for resale. "She is avant-garde," Young acknowledges, "but I believe uniqueness will dictate the value of motor yachts going forward."

*Carpe Diem*, as reviewed, was syndicated in five shares totalling AU\$6.8 million, although the replacement cost for a new-build started today is approximately AU\$8 million. At 25.82 metres with a 5.95-metre beam, *Carpe Diem* is rated for up to 36 adults on a day charter.

Guests come aboard via her extended 2.3-metre hydraulic swim platform, which also accommodates the 4.5-metre tender, launched via a davit with a 1-tonne rating.

A watertight transom door gives access to the engine room, crew accommodation, bathroom and an ingenious prep kitchen.





Huge windows and a large windscreen mean guests won't miss any of the passing seascapes.

The upper galley is located to port and comprises Miele appliances, such as a full-size dishwasher, the latest pyrolytic self-cleaning oven, induction cooktop and integrated rangehood, plus drawer and cupboard space in every bulkhead. The Samsung smart fridge is top of the line. With four zones, the ability to record your shopping list and wide shelving for platters of food, it's the largest on the market.

Adjacent is the dining space, with room for 10. Dark hardware and cabinetry complement the ash chevron-laid flooring, enlivened by brass, citrus and ochre elements. The sophisticated palette, chosen by interior designer Michelle Macarounas from Infinite Design Studio, combined with the uncluttered decor, creates a cosy ambience. The space is separated from the bridge deck by decorative shelving, and there's a day head to port.

Forward is the pilothouse. The helm is wrapped in a burnt-orange, perforated leather. There's a single helm chair, Garmin screens, Twin Disc Quickshift digital control, Yacht Controller, and high-tech cameras and monitoring equipment for vessel systems. Guests can enjoy the view from the bridge in a comfy corner lounge. All appliances and nav equipment on board were sourced from local suppliers and installed in Australia, ensuring compliance, warranties and support.

**Top:** The sundeck shines on the 90, with some serious lounge and dining space under the hardtop and a full bar aft.

**Right:** The foredeck offers sunpads and an inviting alternative alfresco dining area that also converts to a day bed.

The companionway from the helm spirals down to four large cabins, including two twins that can convert to doubles.

In the full-beam master, the queen bed is oriented obliquely for optimal views. The custom-crafted, stainless-steel windows have an Art Deco air. A desk/vanity at the base of the bed conceals the pop-up TV while to port, there's an inviting day bed. Separated from the sleeping area by switch glass panels, the ensuite is as lavish as it is practical, with his-and-hers stone basins, mirrored cabinets, an oversized shower and a separate loo. Very Zen.

The VIP cabin's extra ceiling height, two large skylights above the queen bed, porthole windows and masterful layering of earth tones, textures and LED light strips convey a feeling of space and light. Under-bed storage and cedar-lined cupboards stow all the gear required for longer stints at sea.



**It's all about leisure. Our owners want to unwind completely; they want to forget work and share quality time with their families. More than ever before, quality time is everything.**

The two twin/double cabins have their own ensuites, and all cabins have TVs, cedar-lined cupboards and air conditioning. All hull ports are fixed as is standard for vessels in survey.

The flybridge is the pièce de résistance, comprising lounge/dining under the hardtop with two tables, each with a recessed cooler. Further forward are the sunpads. Aft is a serious bar, complete with Strahl glassware stored securely, Vitrifrigo ice-maker and fridge, an equally impressive barbecue and the spa pool. A retractable awning offers shade.

*Carpe Diem* carries a tender, Sea-Doo Spark, kayaks, SUPs, and Aqua Lily Pad floating mat with a 5-metre inflatable slide. "We say boating is all about spending time together and creating memories," says Young.

**Right:** *Carpe Diem* offers expansive space on deck and inside, and is built to AMSA survey for chartering when her fractional owners are not indulging in her joys.

"That's how we've designed the Longreef 90," he adds. "Everything is to commercial standard. Fuel capacity is 4,000 litres and fuel consumption is comparable with others in this class. At 10 knots, we're burning around 140 litres combined."

On her maiden voyage to Airlie Beach and the Whitsundays, *Carpe Diem's* new owners will leave their itinerary in the capable hands of Captain Will and the meals and messy stuff to Stewardess Michelle. "It's all about leisure," says Young.

"Our owners want to unwind completely; they want to forget work and share quality time with their families. More than ever before, quality time is everything. That's the Longreef motto: effortless luxury. With an emphasis on the effortless." [O longreefyachts.com](https://www.longreefyachts.com)

**SPECIFICATIONS** ➔





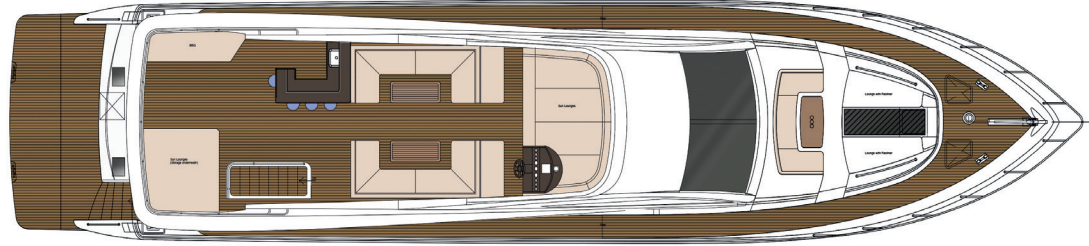
# Longreef 90 SX



1

## FLYBRIDGE

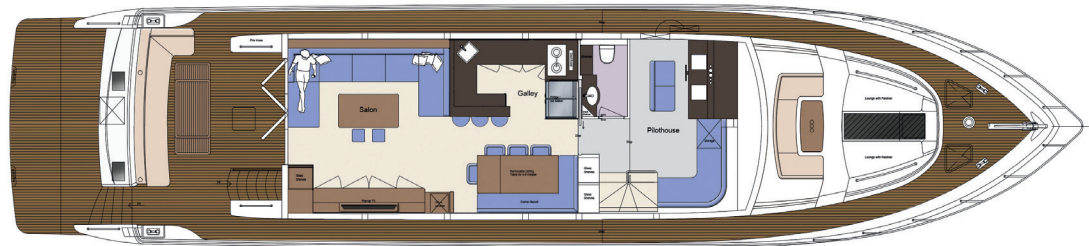
Generous flybridge with twin dining/lounges under the hardtop; full bar and barbecue aft. Fly helm to starboard; forward sunpads. First hull features spa pool up top.



2

## MAIN DECK

Dining table and day beds at the bow. Bifold doors extend saloon into aft covered cockpit. Forward dining area and well-equipped upper galley. Shelves delineate the area from forward pilothouse with guest lounge.



3

## LOWER DECK

Three large ensuite guest cabins, including forward VIP plus midships master with large aft ensuite. Crew accommodation for two aft with additional prep galley.



## SPECIFICATIONS

Builder	Longreef Yachts	Gearbox	TwinDisc MGX5136A
Model	Longreef 90 SX Flybridge	Speed (max)	22 knots
Country of build	China; finished Australia	Speed (cruise)	10–18 knots
Designer	Longreef Yachts	Fuel capacity	4,000 litres
Naval architect	John Butler, John Butler Design	Range	570 nm at 10 knots or 1,600 nm at 6 knots
Interior designer	Michelle Macarounas, Infinite Design Studios	Freshwater capacity	1,000 litres
Year of build	Commissioned 2022	Blackwater capacity	700 litres
LOA (length overall)	25.82 metres	Greywater capacity	400 litres
LWL (waterline length)	23.98 metres	Generators (main)	Kohler 28EFKOZD
Beam	5.85 metres	Gen-set size	28 kW
Draft	1.35 metres	Bow thruster	Quick BTQ300
Displacement (fully laden)	56.2 tonnes	Stern thrusters	Quick BTQ300
Classification	AMSA Commercial Survey (this boat) or CE Category B	Navigation electronics	Garmin
Hull construction	GRP	Owner	Full-beam midships cabin with transverse bed
Superstructure	GRP	Guest berths	Six in three cabins: 1 x VIP double, 2 x double/twin cabins, all with ensembles
Engines	2 x CAT C12.9 1,000 hp	Crew	Crew cabin for two with ensuite and kitchenette
Output	2 x 1,000 hp	Maximum people on board	36 for day charter, plus crew
Propellers	5Blade VeemStar fully CNC-machined	Standard warranties	2 years
Drive train	Shaft (Halliday Engineering 90 mm SS2507 shafts)	Price (landed)	AU\$8 million
Stabilisation systems	Optional		

**22 knots**

Speed (max)

**10–18 knots**

Speed (cruise)

**4,000 litres**

Fuel capacity

**570 nm at 10 knots**

Range

**56.2 tonnes**

Displacement

**AU\$8 m**

Price