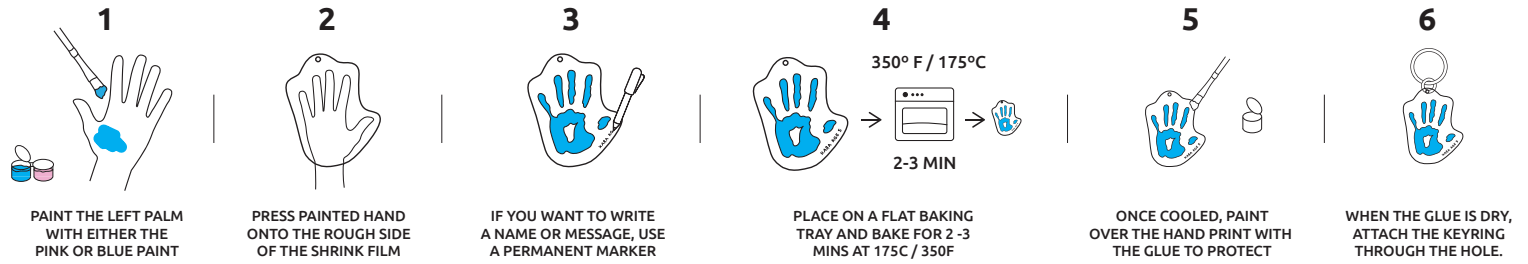


**HAND PRINT KEYRING KIT INSTRUCTIONS**



**IMPORTANT: PLEASE READ THESE INSTRUCTIONS IN FULL BEFORE YOU START.**

1. PAINT THE PALM OF THE LEFT HAND WITH EITHER PINK OR BLUE PAINT USING THE PAINT BRUSH PROVIDED.
2. PRESS THE WET PAINTED HAND ONTO THE ROUGH SIDE OF THE SHRINK FILM. DO NOT ALLOW THE PAINT TO BE TOO THICK AS IT MAY BUBBLE. IT SHOULD BE A NICE THIN AMOUNT OF PAINT. NOW WASH YOUR HANDS AND THE PAINT BRUSH THOROUGHLY WITH WARM WATER.
3. WAIT FOR THE PAINT TO DRY ON THE MAGIC SHRINK FILM. FOR VERY SMALL HAND PRINTS, YOU CAN USE SCISSORS TO TRIM DOWN THE FILM BY USING SCISSORS TO CUT AROUND THE HAND PRINT, BEING SURE THAT YOU DON'T CUT THE HOLE.
4. IF YOU WISH TO WRITE A NAME OR MESSAGE ONTO THE HAND PRINT, DO THIS WITH A PERMANENT MARKER ONTO THE SHINY SIDE OF THE KEYRING NOW.
5. PREHEAT OVEN TO 350F/175C. PLACE THE HAND PRINT FACE UP ONTO A CLEAN BAKING TRAY. WE SUGGEST THAT YOU LINE YOUR TRAY WITH BAKING PAPER OR A SILICONE MAT, BUT THAT'S NOT ESSENTIAL. NOW, USING OVEN GLOVES, POP YOUR SHRINK FILM INTO THE HOT OVEN AND BAKE FOR 2-3 MINUTES. DO NOT BAKE FOR MORE THAN 4 MINUTES.
6. YOUR KEYRING WILL CURL UP DURING BAKING. WAIT UNTIL IT HAS FULLY FLATTENED BEFORE REMOVING IT FROM THE OVEN. IT ALMOST ALWAYS FLATTENS OUT ON ITS OWN WHEN IT'S FULLY SHRUNK, BUT IF IT DOESN'T FLATTEN, DON'T WORRY. SIMPLY USE A SPATULA TO FLATTEN IT AFTER REMOVING IT FROM THE OVEN, OR PLACE A HEAVY FLAT DISH ON IT. THIS WILL PROVIDE A NICE FLAT FINISH. IF IT DRIES CURLED, SIMPLY POP IT BACK INTO THE OVEN FOR A LITTLE LONGER.
7. ONCE COMPLETELY COOLED, USE THE PAINT BRUSH TO PAINT A LAYER OF THE CLEAR GLUE OVER THE HAND PRINT TO PROTECT YOUR DESIGN, BEFORE LEAVING TO DRY FULLY. (TO SPEED UP THE DRYING, POP IT BACK INTO THE OVEN FOR 1 MIN)
8. ATTACH THE SMALL SPLIT RING TO THE HOLE IN YOUR KEYRING, THEN ATTACH THE LARGER RING.
9. YOUR KEYRING IS DONE! NOW TAG @PIKKIIDESIGN IN A PIC OF YOUR KEYRING ON INSTAGRAM OR FACEBOOK FOR YOUR CHANCE TO WIN FREEBIES! THEN YOU CAN GIFT IT TO SOMEONE AND WATCH THEIR HEART MELT.

**TOP TIPS**

- DON'T APPLY TOO MUCH PAINT TO THE SHRINK FILM. THE DRIED PAINT WILL ALWAYS HAVE A TEXTURED FINISH, BUT IF TOO MUCH PAINT IS ADDED THEN THE IT WILL BUNCH TOGETHER WHEN SHRUNK RESULTING IN QUITE A BUMPY FINISH.
- YOU CAN ADD A FEW DROPS OF WATER TO THE PAINT TO THIN IT OUT SLIGHTLY.
- IF CURLING OCCURS, USE A SPATULA TO PRESS DOWN ANY EDGES TO KEEP IT FLAT. YOU CAN ALSO POP IT BACK INTO THE OVEN TO RE-HEAT IT.

**IMPORTANT INFORMATION**

- DO NOT HANDLE PLASTIC UNTIL FULLY COOLED - IT WILL BE HOT WHEN IT COMES OUT OF THE OVEN.
- CHILDREN MUST *ALWAYS* BE SUPERVISED BY A RESPONSIBLE ADULT. NEVER LEAVE THE OVEN UNATTENDED
- THE PAINT INCLUDED IS ACRYLIC PAINT WHICH IS THE PERFECT CHOICE FOR THE MAGIC SHRINK FILM. ALWAYS TEST THE PAINT ON A SMALL AREA OF THE SKIN BEFORE PROCEEDING. IF IRRITATION OCCURS, RINSE OFF IMMEDIATELY WITH WATER AND DISCONTINUE USE.
- AVOID CONTACT WITH EYES. IF CONTACT OCCURS, RINSE IMMEDIATELY WITH CLEAN WATER.
- THE PAINT AND GLUE IS FOR EXTERNAL USE ONLY AND IS NOT EDIBLE. DO NOT INGEST.
- WASH HANDS IMMEDIATELY AFTER USE AND AVOID GETTING THE PAINT ON ANY OTHER SURFACES.
- THE MAGIC SHRINK FILM IS NON TOXIC.
- SHRINK FILM SHOULD NOT BE BAKED IN THE OVEN FOR LONGER THAN 4 MINUTES.
- TAKE CARE OF YOUR NEW KEYRING. IT BECOMES QUITE HARD, BUT CANNOT WITHSTAND EXCESS STRESS AND MAY GET DAMAGED IF DROPPED OR TWISTED.



**WARNING:** SMALL PARTS. CHOKING HAZARD. NOT SUITABLE FOR CHILDREN UNDER 3 YEARS. THIS PRODUCT IS NOT A TOY.

GOT A QUESTION?  
DROP US AN EMAIL AT:  
[HI@PIKKII.COM](mailto:HI@PIKKII.COM)

 WATCH THE VIDEO AT  
[PIKKII.COM](http://PIKKII.COM)



   
TAG @PIKKIIDESIGN ON  
INSTAGRAM & FACEBOOK  
TO WIN FREE STUFF