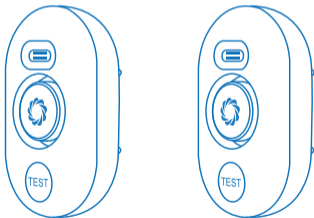




AIRTHEREAL

FL-101S

FLOWLESS WATER LEAK DETECTOR



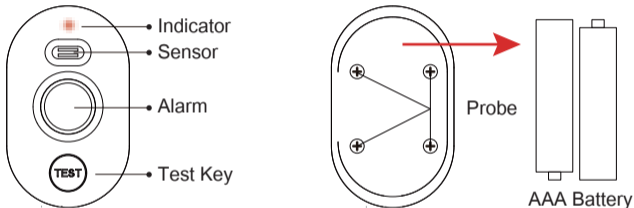
READ AND SAVE THESE INSTRUCTIONS

CONTENTS

PRODUCT STRUCTURE DIAGRAM.....	02
SPECIFICATIONS	03
PACKING LIST.....	03
SET UP AND OPERATION.....	04
INSTALLING YOUR DEVICE.....	09
LOW BATTERY REMINDERS.....	10
LIMITED WARRANTY.....	11

PRODUCT STRUCTURE DIAGRAM

Water Leak Detector



Airthereal Water Leak Detector sounds an alarm after detecting water drips or leaks. After connecting to Wi-Fi, it instantly sends alert notifications to the app wherever you are.

***433 is a communication protocol with a frequency of 433MHz.**

Note: Obstacles or products of the same frequency (433MHz) will affect the reception of information.

SPECIFICATIONS

Water Leak Detector

Model: FL-101S

Sensor Contact: Detect water drip

Sensor Contact: Detect water leak (0.5mm)

Test Button: Pause alarm / Adjust volume

Batteries: 2 x AAA Battery

Alarm Volume: 120dB

IP Waterproof Rating: IP66

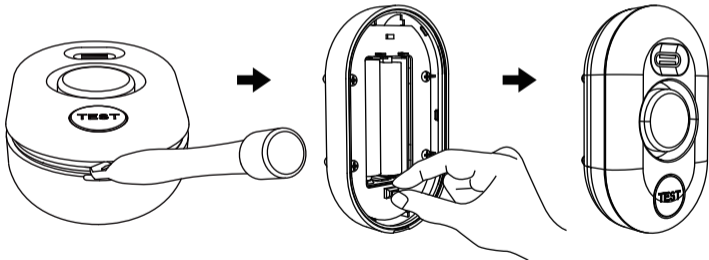
PACKING LIST

- 2 X Water leak detector
- 4 X AAA battery
- 1 X User manual

SET UP AND OPERATION

Setting Up the Water Leak Detector

Step 1 Install the battery

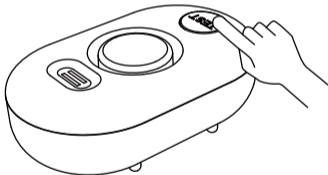


Step 2

Press the button [**Test**], and the detector will beep. Press again to pause the alarm.

Note: If there is no beep, open the back cover to check whether the positive and negative directions of the battery are installed correctly.

Press the button once.



Step 3

Adjust alarm volume by pressing and holding the test button for 3 seconds.
Press and hold for 3s each time to adjust one level of volume.

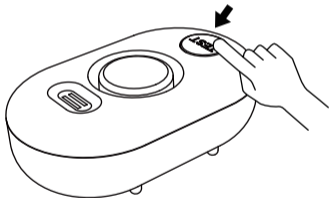
4 (DiDiDiDi-maximum sound)

3 (DiDiDi)

2 (DiDi)

1 (Di-mute)

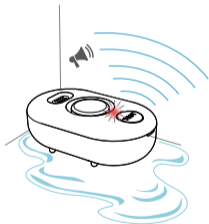
Long press the button 3s.



Step 4

Test that the device can detect water. The detector will alarm if you drip some water on the sensor contacts or put it on a wet surface.

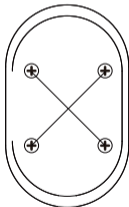
Note: There are four detection sensors on the bottom of the device. Two detection sensors in parallel lines will immediately alarm when they detect water. Two sensors in diagonal lines will not alarm when they detect water at the bottom of the detector.



Water Leak



Water Drip

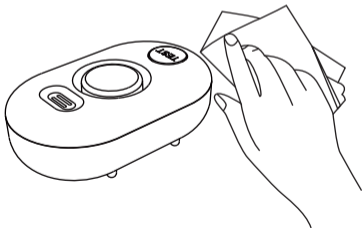


Not Alarm

Step 5

Press the test button to stop the alarm. Remove the device from the water and dry the sensors to stop the alarm completely.

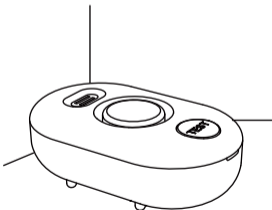
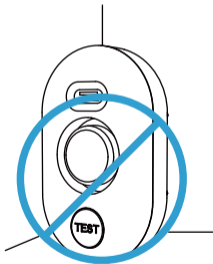
- The first alarm will last for 15 seconds. If the sensor alarm ends and there is still water, the sensor will continue to alarm every 15 seconds until dry or you press the test button to end.
- When the detector is still immersed in water after 24 hours, the detector will stop the alarm.



INSTALLING YOUR DEVICE

1. Plug the gateway into a power outlet or use the battery supply.
2. Lay the water leak detector flat where you want to detect water leaks.

Note: Keep the distance between the gateway and the detector less than 100m/328ft.



LOW BATTERY REMINDERS

Gateway

When the gateway battery voltage is lower than 3.6V, the warning light will flash 3 times every 40 seconds and buzz three times. The App will also send a low battery reminder.

Detector

- The detector will beep three times and send a low power signal to the gateway, gateway alarm. (this action is only done once).
- When the battery power is low, it will automatically shut off and prompt the user to replace the battery.

If you press the **[Test]** button and the detector doesn't emit a beep, it means the battery is dead.

LIMITED WARRANTY

Airthereal warrants all Gateway and Detector for **1 year**. For more information please visit www.airthereal.com/warranty.

What's covered?

Defects due to faulty materials and/or workmanship of the product.

What's NOT covered?

1. Damage caused by the owner when attempting to fix or altering the product by himself or herself.
2. Damage caused by misuse, abuse, neglect, alterations or unauthorized repair.
3. Natural depreciation.

Warranty Period

Warranty becomes effective from the date of original purchase and will last for **1 year**.

Who's covered?

This limited warranty is only effective for the original purchaser. It is non-transferable.

How to request warranty services?

To obtain the benefit of this warranty, please email [**support@airthereal.com**](mailto:support@airthereal.com). Our customer service team will address your issue as soon as possible!

Always here to help you
www.airthereal.com

Produced for: West Ryder Technology LLC
2330 Paseo Del Prado STE C304
Las Vegas, NV 89102

Made in China

V 20220526

FOR THE AIR WE CARE