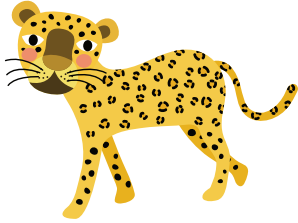
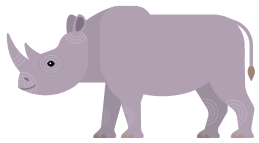


ANIMAL FACTS

INSTRUCTIONS: Draw a line to connect each animal to its correct fact. Answers are provided at the bottom of the page for self-correction.



The tallest mammal on Earth.



This animal uses tools for more purposes than any other creature.



This animal uses its long trunk to lift food into its mouth.



This animal has a unique pattern of black and white stripes.



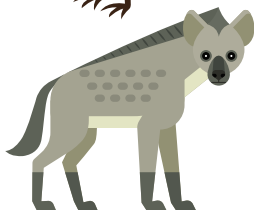
The smallest member of the large cat category.



The name of this animal means "nose horn".



This laugh of this animal indicates its age and social status.



This animal will drop eggs to break them or hit them against rocks.