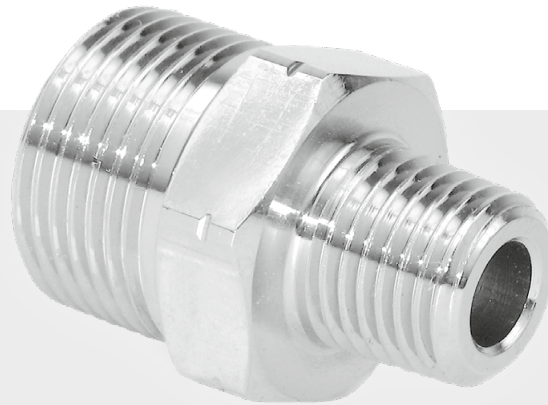


- ✓ Brass, nickel plated or stainless steel
- ✓ Various thread configurations
- ✓ High precision

Different applications require different fitting types. Precision machined universal fitting to suite your application.



**VER** (275 bar / brass, nickel plated)

		male						female	
		G1/4" M	G3/8" M	M18x1.5	M21x1.5	M22x1.5	3/8" NPTM	G1/4" F	G3/8" F
male	G1/4" M		<b>52.004</b>			<b>52.221</b>		<b>52.011</b>	
	G3/8" M	<b>52.004</b>	<b>52.029</b>		<b>52.203</b>	<b>52.230</b>		<b>52.013</b>	
	M21x1.5		<b>52.203</b>		<b>52.208</b>	<b>52.209</b>		<b>52.202</b>	<b>52.204</b>
	M22x1.5	<b>52.221</b>	<b>52.230</b>		<b>52.209</b>	<b>52.229</b>		<b>52.222</b>	<b>52.224</b>
female	G1/4" F	<b>52.011</b>	<b>52.013</b>		<b>52.202</b>	<b>52.222</b>		<b>52.012</b>	<b>52.014</b>
	G3/8" F				<b>52.204</b>	<b>52.224</b>		<b>52.014</b>	
Profile ring fittings	M14x1.5 M (08-L)				<b>52.205</b>	<b>52.225</b>			
	M16x1.5 M (10-L)				<b>52.206</b>	<b>52.226</b>			
	M18x1.5 M (12-L)				<b>52.207</b>	<b>52.227</b>			
NPT	1/4" NPTM			<b>903.834</b>	<b>52.251</b>	<b>52.271</b>	<b>52.102</b>	<b>52.061</b>	
	1/4" NPTF				<b>52.252</b>	<b>52.272</b>		<b>52.062</b>	
	3/8" NPTM				<b>52.253</b>	<b>52.273</b>	<b>52.121</b>	<b>52.063</b>	
	3/8" NPTF				<b>52.254</b>	<b>52.274</b>		<b>52.064</b>	

**VER** (500 bar / stainless steel)

		male								female	
		G1/4" M	R1/4" M	G3/8" M	G1/2" M	M18x1.5	M21x1.5	M22x1.5	3/8" NPTM	G1/4" F	G3/8" F
male	G1/4" M	<b>51.001</b>	<b>51.003</b>	<b>51.004</b>	<b>902.664</b>	<b>51.341</b>	<b>51.277</b>	<b>51.275</b>		<b>51.011</b>	<b>51.005</b>
	G3/8" M	<b>51.004</b>	<b>51.009</b>			<b>51.343</b>	<b>51.279</b>	<b>51.280</b>		<b>51.012</b>	<b>38217</b>
	R1/2" M				<b>904.645</b>						
	M21x1.5	<b>51.277</b>		<b>51.279</b>							
female	M22x1.5	<b>51.275</b>	<b>51.913</b>	<b>51.280</b>	<b>904.687</b>						<b>51.224</b>
	G1/4" F	<b>51.011</b>	<b>51.019</b>	<b>51.012</b>		<b>51.342</b>					
G3/8" F	<b>51.005</b>	<b>51.021</b>	<b>38217</b>		<b>51.344</b>		<b>51.224</b>				<b>51.022</b>
	Profile ring fittings	M14x1.5 M (08-L)	<b>51.301</b>							<b>51.302</b>	
M16x1.5 M (10-L)	<b>51.321</b>								<b>51.322</b>		
M18x1.5 M (12-L)	<b>51.341</b>		<b>51.343</b>		<b>51.359</b>			<b>51.353</b>	<b>51.342</b>	<b>51.344</b>	
NPT	1/4" NPTM	<b>51.103</b>						<b>51.278</b>		<b>51.061</b>	
	1/4" NPTF										
	3/8" NPTM					<b>51.353</b>					
	3/8" NPTF	<b>51.129</b>	<b>51.129</b>			<b>51.354</b>					

Other versions or sizes upon request.

**TECHNICAL DATA**

<b>Pressure</b>	275 bar (27.5 MPa) 500 bar (50 MPa)
<b>Body</b>	Brass nickel-plated or stainless steel

Legend

M.. = metric thrust, ..M = male, F = female, G = gas pipe thrust, R = gas pipe thrust conical, QV = quick connects, SV = profile ring fitting  
D = diameter, L = length, NW = nominal width, SW = wrench size, IN = media input, OUT = media output, RS = basic position