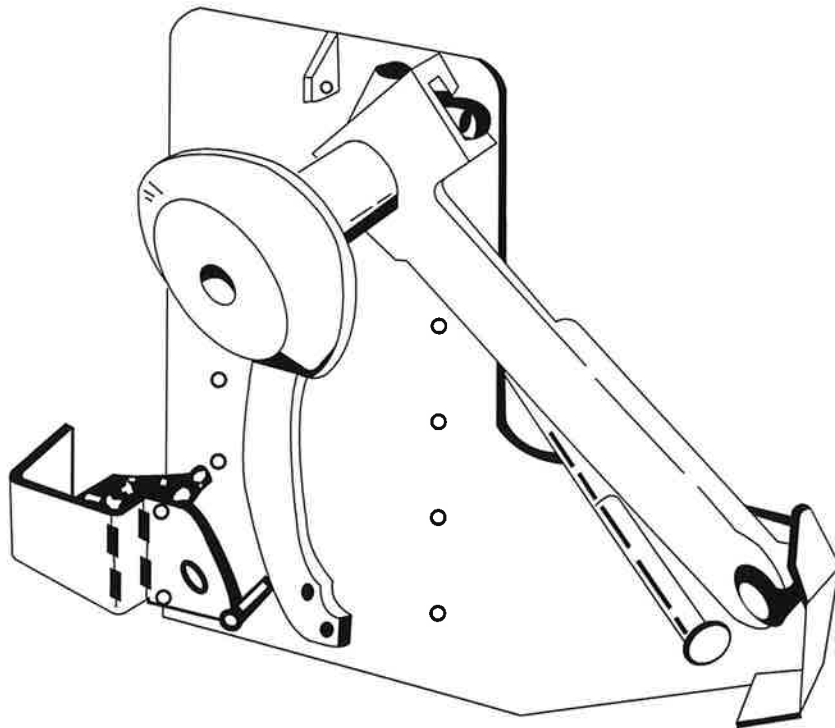


# STAR<sup>®</sup> TRUK STOP<sup>®</sup> Vehicle Restraint

## STAR<sup>®</sup> 1



This manual applies to vehicle restraints manufactured beginning February 1999 with the serial numbers 10,094,000 and higher.

### **WARNING**

*Do not install, operate or service this product unless you have read and understand the Safety Practices, Warnings, and Installation and Operating Instructions contained in this manual. Failure to do so could result in death or serious injury.*

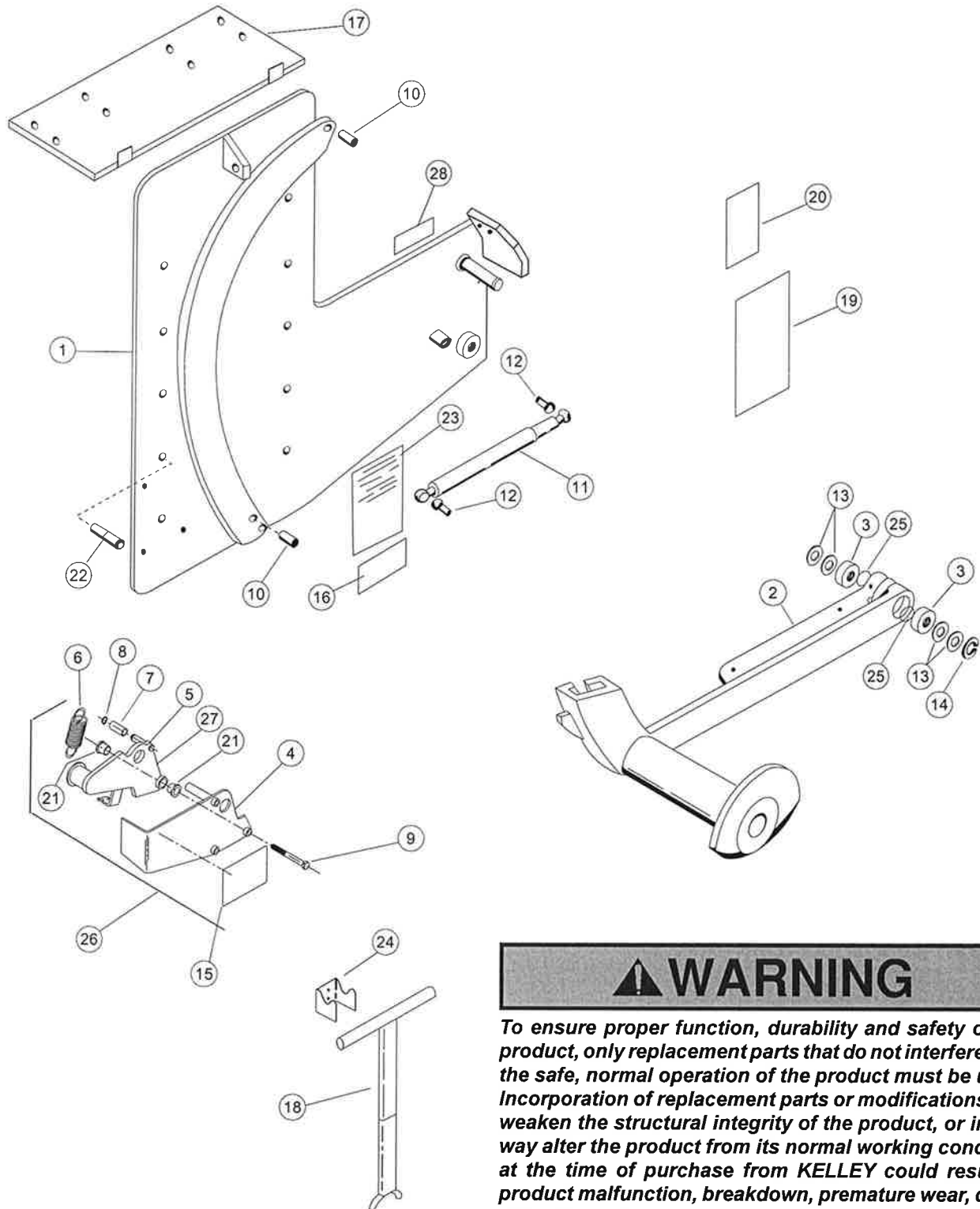
## **User's Manual**

### Installation, Operations, Maintenance and Parts

Part No. 5343 R14

# PARTS LIST

Fig. 24



## ▲ WARNING

*To ensure proper function, durability and safety of the product, only replacement parts that do not interfere with the safe, normal operation of the product must be used. Incorporation of replacement parts or modifications that weaken the structural integrity of the product, or in any way alter the product from its normal working condition at the time of purchase from KELLEY could result in product malfunction, breakdown, premature wear, death or serious injury.*

## PARTS LIST, continued

Item	Quantity	Description	Part Number
1	1	Back Plate Weldment - Plated	713-397
2	1	Hook Arm, Machined - Plated	675-411
3	2	Bearing, Ball (Included in Item 2)	091-097
4	1	Latch Arm Guard Weldment - Plated	*713-024
5	1	Release Lever Weldment - Plated	*713-023
6	1	Spring, Extension	*101-077
7	1	Bearing, Cylindrical 1/2" x 5/8" x 1"	*091-095
8	1	Ring, Retaining 1/2"	*131-351
9	3	Capscrew, Hex Hd 3/8" - 16 x 3-1/2" lg	*131-364
10	2	Pin, Roll 1/2" dia x 1-1/4" lg	035-100
11	1	Gas Spring	709-472
12	2	Rod End (included in item 11)	708-829
13	A/R	Washer 1-1/2" OD x 1-1/16" ID	000-064
14	1	Klipring, 1"	049-064
15	1	Label "Warning Stand Clear"	708-778
16	1	Label "Serial Plate"	138-822
17	1	Horizontal Mounting Plate - Green Paint	709-470
18	1	Pushbar	708-736
19	1	Sign, Vehicle Driver Information	708-744
20	1	Sign, Dock Workers Information	708-779
21	2	Bearing, Flanged	*091-094
22	1 pkg.	Anchors, 14 per package (not shown)	287-510
23	1	Decal, STAR® TRUK STOP® Logo	709-624
24	1	Hanger Bracket	152-814
25	2	Ring, Retaining (Included in Item 2)	049-067
26	1	Latch Assembly - Plated	713-025
27	1	Grease Fitting (Used for item 5)	*127-002
28	1	Label, Safety Products	711-266

\* Included in Item 26

# KIT INSTRUCTIONS

## INSTALLATION INSTRUCTIONS

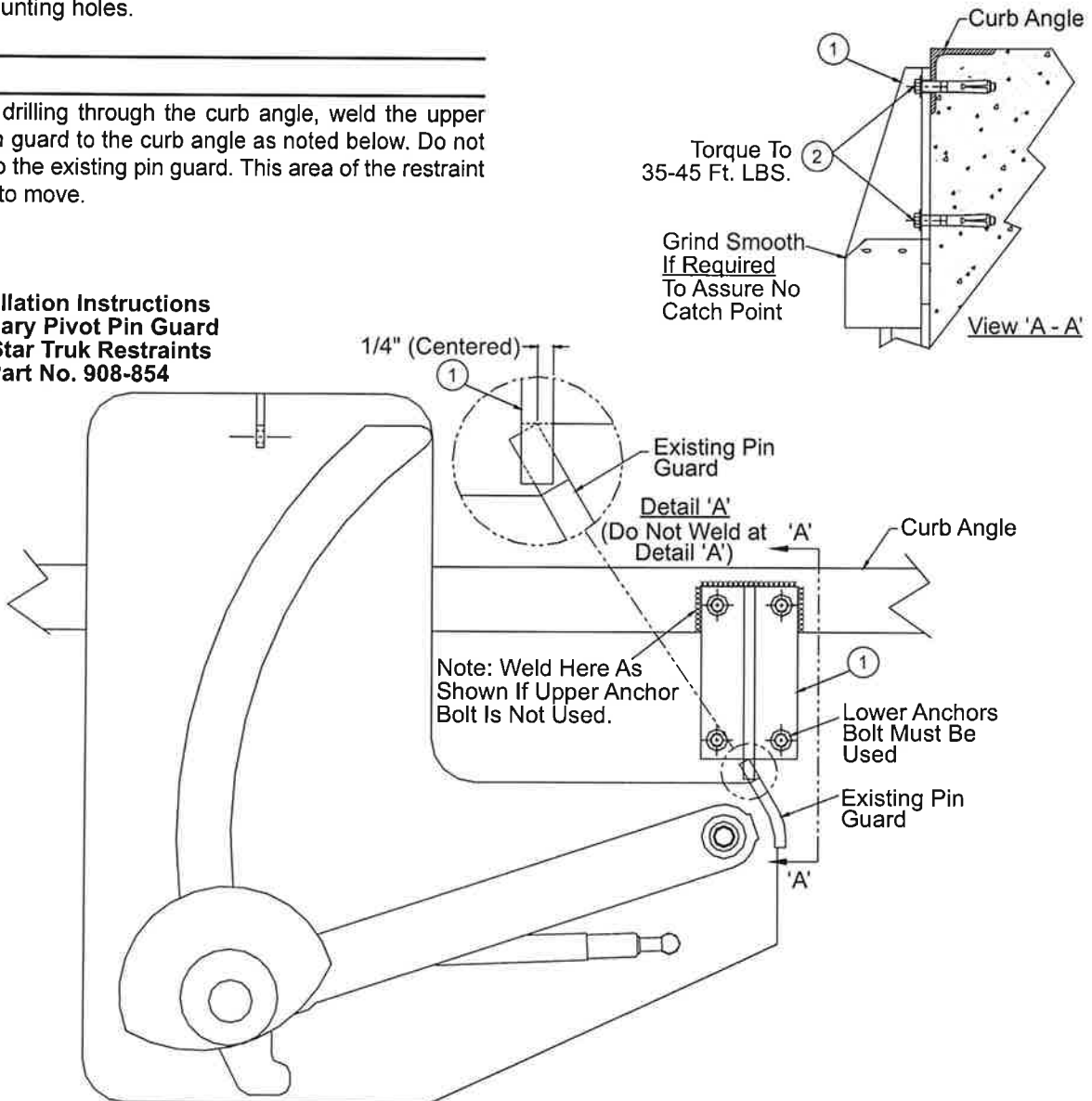
1. Place hook in the down position.
2. Located Item 1 directly above the existing pin guard. (See Fig. 25.) with its bottom edge aligned as shown in detail 'A'.
3. Using Item 1 as a template drill four 1/2" dia. x 3-1/2" deep mounting holes.
4. Fasten Item 1 to the dock face using the 4 anchor bolts (two anchor bolt if welding) torqued to 35-45 ft-lbs.
5. Grind smooth the mating surfaces of Item 1 and existing pin guard. Repaint this area and any welds to prevent rust.

### NOTE:

To Eliminate drilling through the curb angle, weld the upper end of the pin guard to the curb angle as noted below. Do not weld Item 1 to the existing pin guard. This area of the restraint must be free to move.

Fig. 25

### Installation Instructions Auxiliary Pivot Pin Guard For Star Truk Restraints Part No. 908-854



Item	Quantity	Description	Part Number
1	1	Guard, Pivot Pin	712-634
2	4	Anchor Bolt, 1/2 x 3-3/4	131-260