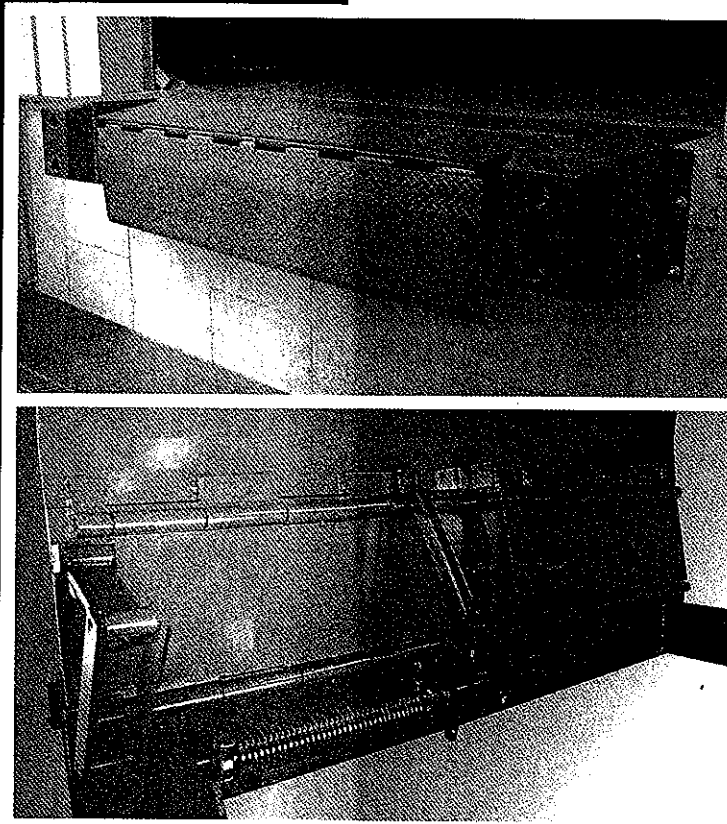


McGUIRE MECHANICAL EDGE OF DOCK LEVELERS

MEOD



OWNER'S MANUAL & INSTALLATION GUIDE

IMPORTANT: Thoroughly read and understand entire contents of this manual prior to installation and/or operation of this equipment.

CAUTION: Be sure that installation and maintenance are performed by authorized personnel.



TABLE OF CONTENTS

| | |
|--|------------|
| Introduction..... | 2 |
| Definition and Function..... | 3 |
| Overview of Potential Hazards..... | 4 |
| Safety Practices..... | 5 |
| Installation Instructions..... | 6 |
| Field Winding Procedures..... | 7 |
| Operation Instructions..... | 8 |
| Component Identification..... | 9 |
| Initial Run-In Procedure..... | 10 |
| Maintenance and Service..... | 10-11 |
| Trouble Shooting Procedures..... | 11 |
| Exploded View..... | 12 |
| Parts List..... | 13-14 |
| General Arrangement Lift Free EOD..... | 15 |
| Warranty..... | Back Cover |

McGuire shall not in any event be liable for any loss of the use of any equipment or incidental or consequential injuries or damages of any kind as a result of misuse or improper operation of this product

INTRODUCTION

Congratulations! You have purchased the industry's finest mechanically operated dock leveler produced by the W.B. McGuire Company, Inc. of Hudson, NY. Properly installed, operated and serviced, it will substantially increase safety, efficiency and productivity at your dock. McGuire Mechanical Edge Of Dock Levelers are a part of the Overhead Door family of material handling products. For more than 40 years W.B. McGuire has been delivering safe, modern and productive dock equipment. All W.B. McGuire products meet or exceed the industry standards and all come with a comprehensive warranty. You can expect McGuire products to deliver quality service and a dedication to quality that will keep your dock working at its best. The engineers and metal craftsmen take pride in the design and manufacture of all McGuire products. You can expect long life from these products with the use of high quality materials. Include this with our distributors and field installation workmen sharing the commitment to industry leading design, innovation and excellence.

This "Mechanical Edge Of Dock" by McGuire is designed to give safety and efficiency for personnel involved in shipping and receiving goods at the loading dock area.

ALL safety considerations should be observed by those installing, operating or servicing this equipment. Even quality, well built products can be installed, operated and serviced in a less than safe manner. BEFORE attempting to install, operate or service this "Mechanical Edge Of Dock" leveler, READ this manual COMPLETELY through to understand ALL installation, operating and maintenance instructions. Pay special attention to all warnings and caution statements. Remember – Safety First!

SAFETY INFORMATION...

- Never work under the dock leveler without sufficient bracing to safely secure the leveler from any movement that may cause injury.
- Be sure truck wheels are chocked, or restraint device activated, before loading/unloading operations begin. Personal injury and/or freight damage can result from careless work habits at loading dock.
- Do not operate dock levelers with anyone standing directly on or in front of the leveler.
- Read and follow operating instructions to store dock levelers at dock level after loading/unloading truck departs.
- Periodic inspection should be made to insure there are no worn or damaged parts which could result in failure of equipment and/or personal injury. Lubrication and adjustment is essential to proper operation of this product. Follow maintenance recommendations for needed service information.
- Do not stand on any part of the leveler or stand near or touch the leveler while any load is being placed on it. Never place your hands, arms, feet or legs in a position where a load moving onto the leveler could cause injury. If in doubt, don't do it!

WARNING...Personal injury and/or structural damage to dock leveler can result from abuse or negligent use of this product, or failure to take proper precautions during maintenance or service.

IMPORTANT...

- It is imperative that the installer thoroughly understand the operational and safety information contained in this manual first.
- McGuire recommends 16" bumper projection with Dock Levelers.
- Contact your authorized McGuire Distributor or the McGuire help Line at 1-800-929-2553 if there is anything you do not understand about this Equipment.

DEFINITION AND FUNCTION

The McGuire Mechanical "Lift Free" Edge Of Dock Leveler (EOD or Dock Levelers) is a safe, efficient and economical means of bridging the gap between building and truck where a minimal variance exists between truck bed and dock heights. These units have a working range of 5 inches above to 5 inches below dock level.

McGuire Mechanical Edge Of Docks feature a lever activated deck and lip mechanism for easy trouble free operation. "Lift Free" levelers incorporate McGuire's exclusive lever-lift design which makes operation of the leveler smooth and easy. This unique design eliminates the possible pinch points found on competitive units. Models are available with 20K, 25K and 30K capacities in widths from 66 inch, 72 inch, 78 inch and 84 inch. These Levelers are an excellent choice for new construction or renovation.

The operation of the "Lift Free" is a simple two step process. Just pull back on the handle to engage and push forward for usage operation. It is just that simple.

This easy to operate dock leveler eliminates the extreme bending, pushing and lifting normally associated with old style edge of docks. The placement of the activation bar keeps dock attendants in the safest position to safely operate the leveler.

These units feature as standard, bumpers with blockouts, low maintenance and offer a working range of 5 inches above to 5 inches below dock level. MEOD LF units automatically return to the stored position after the truck leaves the dock and are built using quality steel in manufacture to give long strong service. Simple maintenance will make these levelers a sound investment in safety and efficiency.

Permanently installed MEOD LF models are always ready for use. Models are normally mounted to the front of the dock.



OVERVIEW OF POTENTIAL HAZARDS

The W.B. McGuire Mechanical Edge Of Dock Levelers are designed to provide a safer work place at shipping and receiving dock areas. Read this manual completely before attempting to install, use or service this equipment. Give special attention to all warning and safety instructions. If you do not understand an instruction or have questions, contact your local representative or the W.B. McGuire Technical Support Team immediately at 1-800-929-2553.



In this section and those that follow, the words **Danger**, **Warning**, and **Caution** are used to emphasize the important safety information. The Word:

DANGER means that severe injury or death will occur from failure to follow instruction.

WARNING means that severe injury or death can occur from failure to follow instruction.

CAUTION means that minor injury or property damage can occur from failure to follow instructions.

The word **NOTE** is used to indicate important steps to be followed or important considerations.

| POTENTIAL HAZARD | EFFECT | PREVENTION |
|--|---|--|
|  <p>MOVING RAMP</p> | <p>WARNING: can cause serious injury or death.</p> | <p>Moving Ramp can cause serious injury or death.</p> <p>Stay Clear when ramp is in motion.</p> <p>Do Not enter pit area until ramp has been braced open.</p> |
|  <p>MOVING EQUIPMENT</p> | <p>WARNING: can cause serious injury or death.</p> | <p>Moving Truck can cause serious injury or death.</p> <p>Stay Clear when truck is in motion.</p> <p>Do Not stand between truck and ramp when truck is entering or leaving.</p> |
| SAFETY INSTRUCTIONS | | |
| <p>Before Operation or servicing</p> <ol style="list-style-type: none"> 1. Read manual carefully before installing, operating, or servicing dock leveler. 2. Be sure truck wheels are chocked or truck is held in place by a retraining device before loading or unloading. 3. Make sure leveler is returned to its level, stored position after truck pulls away from dock. 4. Do not attempt to manually lift the dock leveler platform or lip. Do Not operate leveler with equipment, material or people on the platform, lip or in front of the leveler. 5. Keep pedestrians and forklifts away from open door area when not loading or unloading truck. 6. If dock leveler appears to be broken or is not working properly, contact your authorized McGuire representative. 7. No person should be present on or under a dock leveler unless it is positioned or secured in a manner that will prevent or avoid harm. | | |

SAFETY PRACTICES



WARNING: Read and understand all safety practices and operating instructions before installing, operating or servicing the EOD. Failure to follow the safety practices may result in property damage, serious bodily injury or death.

If you do not understand the safety practices or the instructions, ask your supervisor to explain the safety practices and/or teach you how to use the EOD leveler.



CAUTION: The installer and/or operator MUST be very familiar with the operation, function and various parts of the W.B. McGuire EOD series dock levelers PRIOR to installation and/or operation. If this is not the case, it is IMPERATIVE that the installer and/or operator read, and fully understand, the entire contents of this manual. **Be certain to read and understand all warning and caution statements contained in this manual prior to any installation, operation or servicing of this unit.**

1. Do not operate this equipment while under the influence of drugs or alcohol.
2. Do not stand in the driveway between the EOD leveler and a truck backing or pulling away.
3. Be sure the truck wheels are chocked, or the truck is held in place by a restraining device, before attempting to load or unload the truck.
4. Do not use the EOD leveler if it looks broken or does not seem to work right. Tell your supervisor immediately.
5. Do not operate the EOD leveler with equipment, material or people on the ramp, back plate or in front of the unit.
6. Be certain that equipment, material or people are not on the EOD leveler before allowing a truck to pull out.
7. Keep clear of the EOD leveler when it is moving. Never place your hands, arms, feet or legs in a position where a moving EOD or a moving load could cause injury. **If in doubt, do not do it.**
8. Do not attempt to manually lift the EOD platform or lip, with personnel or other equipment. **If the EOD is not working properly when following the operation instructions in this manual, do not use it.** Contact your authorized W.B. McGuire representative.
9. Never attempt to work under the EOD, for service or repair, without a second person for safety.
10. Whenever working on EOD for service or repair always tag area "OUT OF SERVICE."
11. Damage to the EOD, personal injury or death can result from abuse and/or negligent use of this equipment.
12. As always when working with heavy equipment, use extreme caution.
13. If you have any questions, or if a malfunction occurs which is not understood, ask your supervisor to contact your authorized W.B. McGuire representative for assistance PRIOR to attempting any corrective measures.

INSTALLATION INSTRUCTIONS



CAUTION: Installation to be performed by authorized, experienced installation personnel **ONLY**.



WARNING: Always use safe work habits. Read and understand entire contents of this manual, paying particular attention to all warning, caution and important statements before attempting to install or operate this dock leveler. Always support the Edge Of Dock using the attached Maintenance Leg, or other safe support means, before attempting to work under the leveler. Failure to observe these and other safe work habits may result in property damage, personal injury or death.

EQUIPMENT CHECK:

1. Check the Edge Of Dock for any possible damage that may have occurred in transit. If any damage, contact your supervisor for proper handling. **DO NOT INSTALL A DAMAGED EDGE OF DOCK.**

NOTE: Make sure the Edge Of Dock bumpers are present.

INSTALLATION OF LEVELER AND BUMPERS:

1. If this is a face, pick up EOD underneath lip & platform and position unit against angle parallel to dock face. Tack weld back plate to the curb angle. Manually open lip and platform. Lag the unit into the wall with 3/4" x 6" Power Bolts. Finish welding back plate to curb angle by placing 6" welds on 12" centers minimum. *Note:* unit must be evenly spaced on ends.
2. At this point the operation of the dock leveler can be checked. See Operating Instructions on page 8.
3. Spot paint any areas affected by welding.
4. Wind springs as needed.
5. Store unit in closed position.
6. Mount the bumpers to the dock face. Refer to page 15.
7. Operate leveler through several complete cycles after installation to check for consistent operation. See page 8. Check operation of below dock cycle. Check operation of independent lip feature and emergency stop feature if equipped. **IF ANY OF THE ABOVE OPERATIONS DO NOT WORK AS DESCRIBED UNDER DOCK LEVELER OPERATION, CONTACT A W.B. McGUIRE TECHNICAL SUPPORT REPRESENTATIVE AT 1-800-929-2553.**
8. As a final step in the installation, get an official at the site to review the proper operation and installation of the dock leveler.

FIELD WINDING PROCEDURE

COUNTERBALANCE TORSION SPRING

TOOLS REQUIRED:

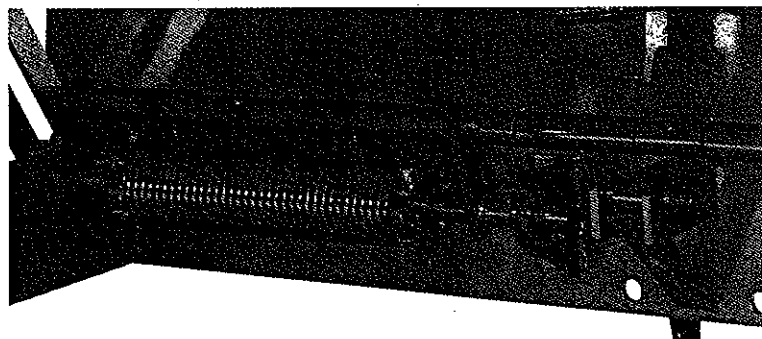
- Two (2) Winding Rods McGuire Part number #523-374 – 1/2 inch dia. x 18 inch long Rod.
- One (1) 3/8 inch Wrench to Tighten Set Bolts

WINDING PROCEDURE:

1. Open MEOD Deck and lip as far as possible until they stop.
2. Before beginning, be sure to follow safety practices. See page 5.
3. Set winding Rod Tool in holes provided in the winding plug at the starting position.
4. Use right hand for rod #1 and left hand for rod #2 or vice versa and wind the number of 1/4 turns suitable for your model (See Fig. #2).

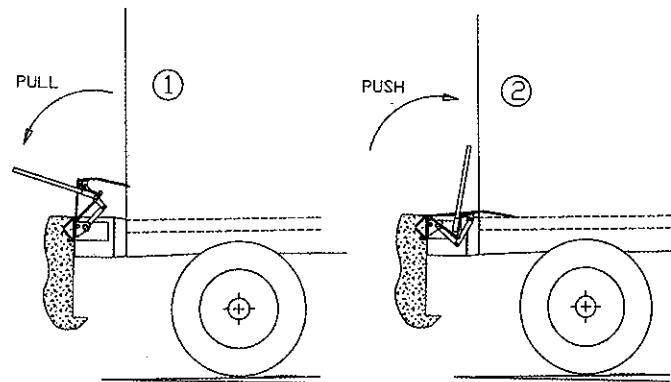
Figure #2 Winding Chart

| MODELS | NUMBER OF 1/4 TURNS |
|-------------|---------------------|
| MEOD 6620LF | 6 |
| MEOD 6625LF | 6 |
| MEOD 6630LF | 7 |
| MEOD 7220LF | 7 |
| MEOD 7225LF | 7 |
| MEOD 7230LF | 6 |
| MEOD 7820LF | 7 |
| MEOD 7825LF | 7 |
| MEOD 7830LF | 7 |
| MEOD 8420LF | 7 |
| MEOD 8425LF | 7 |
| MEOD 8430LF | 7 |



OPERATION INSTRUCTIONS

WARNING: DO NOT ATTEMPT TO OPERATE THE EDGE OF DOCK (EOD) UNIT WITHOUT A TRAILER AT THE DOCK.



1. EOD must be in stored position.
2. Check that the vehicle is against both bumpers. Now, attach the Vehicle Restraint or place chocks for safety at wheels. Check that Vehicle Restraint is properly engaged. Failure to follow instructions may cause serious injury or death.
3. Insert operating handle into recess hole provided and pull back until handle reaches activation position to engage cycle for operation of the MEOD.
4. Push operating handle forward until lip extends and rests on the truck bed.
5. Remove operating handle and store for convenient future reuse.
6. Proceed with unloading or loading the vehicle.
7. When all unloading or loading operations are complete, there are 2 ways to store the MEOD. The Vehicle Restraint must be disengaged or chocks removed from the wheels before the truck pulls away.
 - A. The MEOD will then, automatically return to the stored position after the truck has left the dock area.

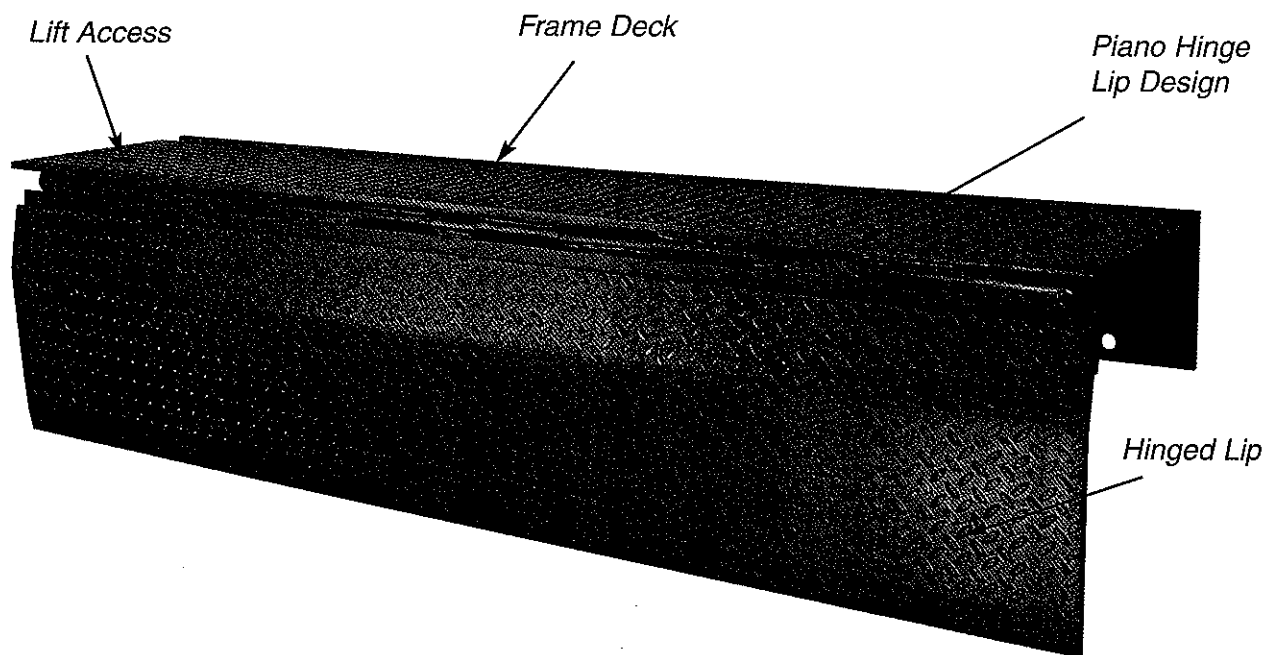
OR:

 - B. With truck still at the dock, insert the operating handle into the recess hole and pull lever back until tip of the lip just clears the back end of the truck bed then push lever forward and MEOD will then go to the stored position. If the MEOD goes into the extended position means you are lifting the lip/deck assembly too high above the vehicle bed and you must re-start from the beginning of the cycle to go to the stored position.

Caution: Lifting the lip to a higher position than necessary may cause the lip and platform cycle to engage and go to the extended work position. Avoid this by re-starting at instruction "B" above being careful to not engage the full cycle and then obtaining proper storage of the MEOD.

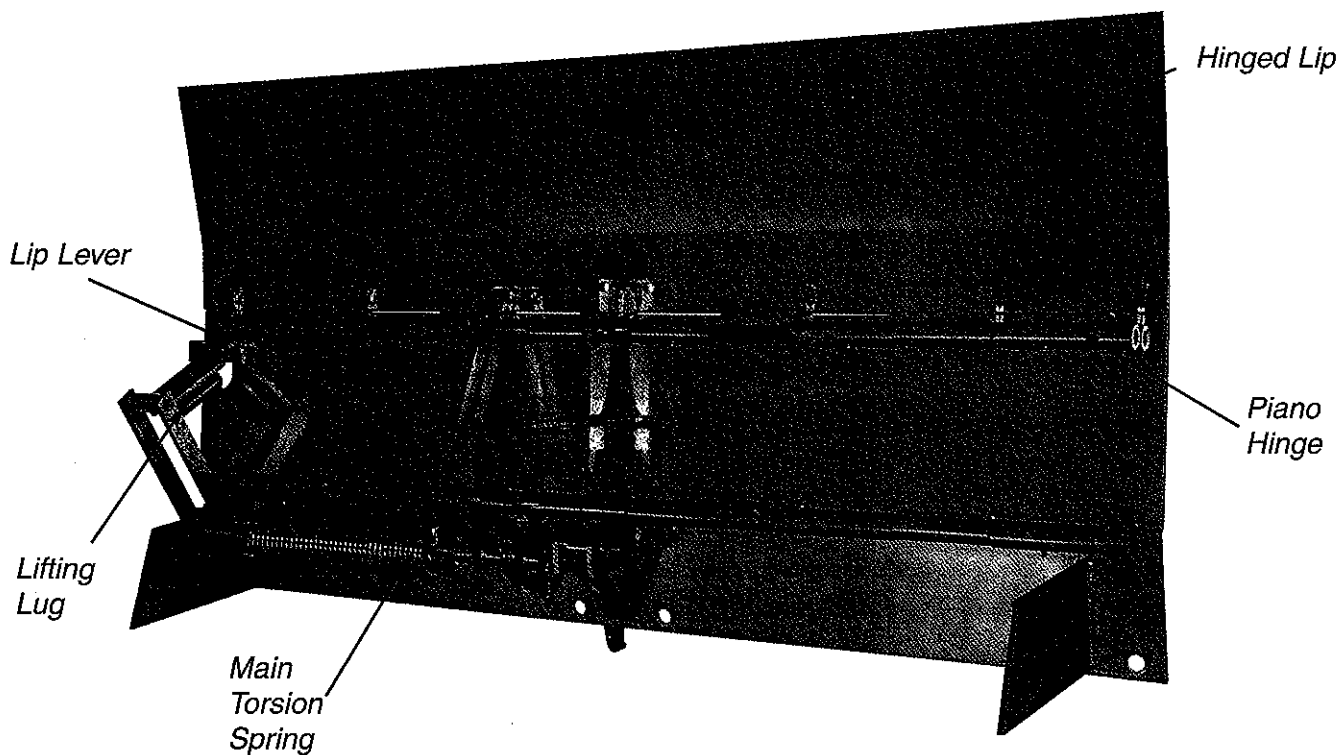
COMPONENT IDENTIFICATION

Mechanical Edge Of Dock- Stored Position



Note: Bumpers not shown for clarity.

Mechanical Edge Of Dock - Up Position



Note: Bumpers not shown for clarity.

INITIAL RUN-IN PROCEDURE

IMPORTANT: There could be a considerable time lapse between the installation and initial use of your W.B. McGuire EOD series mechanical leveler. It is recommended that you follow this "initial run-in" procedure to insure that your dock leveler is operating properly.



CAUTION: Completely read and understand all Safety Practices on page 5 as outlined in the beginning of this manual. Read and understand entire manual before beginning the Initial Run-in procedure.

1. Clean any debris from the dock and approach.
2. Follow procedure under the "INSTALLATION INSTRUCTIONS" page 6 segment for "Setting the Maintenance Leg" and "Restoring EOD Leveler to Dock Level."
3. With the dock leveler in the stored position, go to the Operation Instructions on page 8 segment and repeat all operations found in this segment four (4) to five (5) times.
4. Follow all WARNINGS and/or CAUTION statements.
5. DO NOT USE the dock leveler if it appears broken, or does not seem to work right or any of the functions under Operation Instructions do not function properly. Contact your authorized W.B. McGuire Representative.

MAINTENANCE AND SERVICE

On-site maintenance personnel can observe the following procedures or you can arrange for professional service through your authorized W.B. McGuire representative.



WARNING: Before operation of the EOD, read and understand all Safety Practices Found on page 5.

Use by untrained personnel can result in property damage, serious bodily injury or death. Read and understand complete Operation Instructions before attempting to operate this EOD leveler. Follow all OSHA regulations regarding the use of this equipment. **Do not use the EOD if it appears broken or does not seem to function properly.** Contact your authorized McGuire Representative should there be any doubts about the function of the Edge Of Dock.

Do not install, operate or service this Edge Of Dock leveler until you have read and understand the entire contents of this manual.

IMPORTANT: The frequency of maintenance and service required will vary do to the amount and type of usage. Contact your authorized W.B. McGuire representative or the factory for information.

Note: Authorization to repair, replace or otherwise adjust any portion of the EOD should always be secured in advance of any work taking place. Failure to do so may void the dock leveler warranty.

1. Keep area around the dock free of dirt and debris.
2. Always place service leg in supporting position or support unit by other means when working on ramp components or performing maintenance chores.

MAINTENANCE AND SERVICE (continued)

3. Grease hinge spools as conditions monthly or more as needed. Be sure lip lock operates freely.
4. Check all hardware to be sure it is tight and be sure that cotter pins are in clevis pins. Replace any missing hardware or parts.
5. Tighten hardware if bumpers are loose.
6. Replace worn or torn bumpers.

TROUBLESHOOTING PROCEDURES

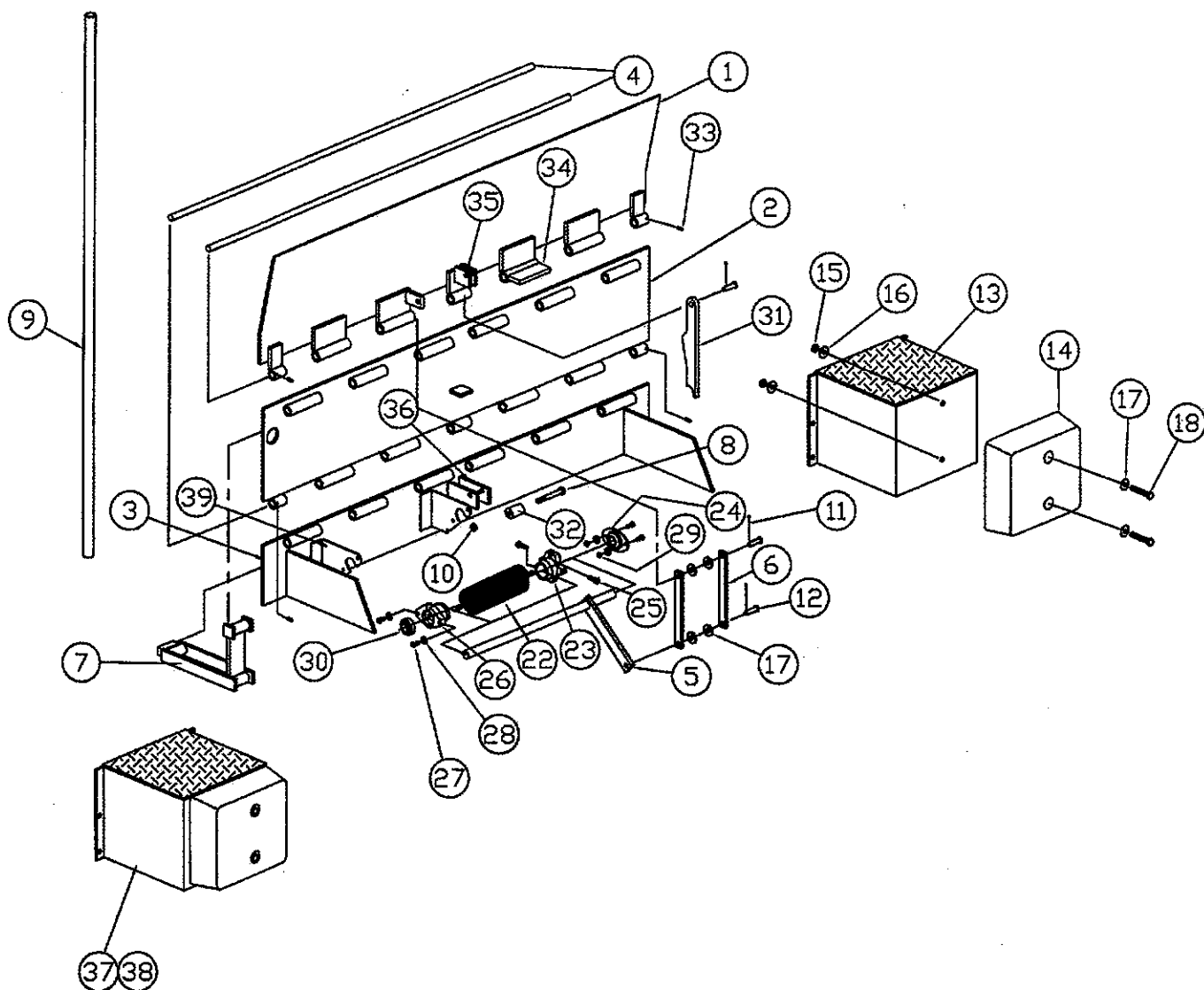
If the corrective action does not solve the problem, consult the W.B. McGuire Technical Support Team immediately. DO NOT USE THE EDGE OF DOCK. If you encounter a problem that is not covered in this section, consult the W.B. McGuire Technical Support Team immediately at 800-929-2553.

| Symptom | Probable Cause | Corrective Action |
|--|---|---|
| 1. Unit hard to operate | A. Lack of grease B. Bent or broken linkage C. Torsion spring adjustment D. Torsion spring broken or damaged E. Debris at hinge points F. Control handle bent or too short | A. Lube all fittings and lube points. B. Replace bent or broken parts. C. Refer to manual for proper settings. D. Replace spring and/or associated parts. E. Clean all hinge points of debris and lube. F. Replace with proper handle. |
| 2. Lip will not extend | A. Lip strut not engaging roller B. Unit not fully engaged | A. Check for wear or damage to strut or roller. Replace parts if necessary. B. Pull handle all the way back to engage unit fully. |
| 3. Deck bounce | A. Excessive tension on torsion spring B. Excessive speed of fork lift across deck C. Trapped debris | A. Adjust spring to recommended settings. B. Advise user to control speed for safety. C. Clean debris out from under unit. |
| 4. Lip folds when forklift exits trailer | A. Servicing trailers more than the maximum 5" below dock level B. Broken linkage | A. Seek alternate means to raise trailer bed to within servicing range of MEOD. B. Replace parts. |

EXPLODED VIEW

NOTES:

1. ITEM #13, STEEL BUMPER BLOCKOUT NOT SOLD SEPARATELY, SHOWN FOR ASSEMBLY PURPOSES ONLY.
2. ITEM #38, IS THE OPTIONAL 18" BUMPER BLOCKOUT ASSEMBLY.
3. ITEM #22, TORSION SPRING NOT SOLD SEPARATELY. MUST ORDER ITEM 23 AND 26 AS WELL.



COMPLETE BUMPER ASSEMBLY AND BLOCKOUT.

P/N 533.186

PARTS LIST

| ITEM | DESCRIPTION | PART NO | MEOD6620LF | MEOD6625LF | MEOD6630LF | MEOD7220LF | MEOD7225LF | MEOD7230LF | MEOD7820LF | MEOD7825LF | MEOD7830LF | MEOD8420LF | MEOD8425LF | MEOD8430LF |
|------|------------------------------|---------|------------|------------|------------|------------|------------|------------|------------|------------|------------|------------|------------|------------|
| 1 | MEOD6620LF LIP ASSY | 513-401 | 1 | | | | | | | | | | | |
| 1 | MEOD6625LF LIP ASSY | 513-402 | | 1 | | | | | | | | | | |
| 1 | MEOD6630LF LIP ASSY | 513-403 | | | 1 | | | | | | | | | |
| 1 | MEOD7220LF LIP ASSY | 513-404 | | | | 1 | | | | | | | | |
| 1 | MEOD7225LF LIP ASSY | 513-405 | | | | | 1 | | | | | | | |
| 1 | MEOD7230LF LIP ASSY | 513-406 | | | | | | 1 | | | | | | |
| 1 | MEOD7820LF LIP ASSY | 513-407 | | | | | | | 1 | | | | | |
| 1 | MEOD7825LF LIP ASSY | 513-408 | | | | | | | | 1 | | | | |
| 1 | MEOD7830LF LIP ASSY | 513-409 | | | | | | | | | 1 | | | |
| 1 | MEOD8420LF LIP ASSY | 513-410 | | | | | | | | | | 1 | | |
| 1 | MEOD8425LF LIP ASSY | 513-411 | | | | | | | | | | | 1 | |
| 1 | MEOD8430LF LIP ASSY | 513-412 | | | | | | | | | | | | 1 |
| 2 | MEOD6620LF DECK ASSY | 513-370 | 1 | | | | | | | | | | | |
| 2 | MEOD6625LF DECK ASSY | 513-374 | | 1 | | | | | | | | | | |
| 2 | MEOD6630LF DECK ASSY | 513-378 | | | 1 | | | | | | | | | |
| 2 | MEOD7220LF DECK ASSY | 513-371 | | | | 1 | | | | | | | | |
| 2 | MEOD7225LF DECK ASSY | 513-375 | | | | | 1 | | | | | | | |
| 2 | MEOD7230LF DECK ASSY | 513-379 | | | | | | 1 | | | | | | |
| 2 | MEOD7820LF DECK ASSY | 513-372 | | | | | | | 1 | | | | | |
| 2 | MEOD7825LF DECK ASSY | 513-376 | | | | | | | | 1 | | | | |
| 2 | MEOD7830LF DECK ASSY | 513-380 | | | | | | | | | 1 | | | |
| 2 | MEOD8420LF DECK ASSY | 513-373 | | | | | | | | | | 1 | | |
| 2 | MEOD8425LF DECK ASSY | 513-377 | | | | | | | | | | | 1 | |
| 2 | MEOD8430LF DECK ASSY | 513-381 | | | | | | | | | | | | 1 |
| 3 | MEOD6620LF MT PL ASSY | 513-382 | 1 | | | | | | | | | | | |
| 3 | MEOD6625LF/6630LF MT PL ASSY | 513-383 | | 1 | 1 | | | | | | | | | |
| 3 | MEOD7220LF MT PL ASSY | 513-384 | | | | 1 | | | | | | | | |
| 3 | MEOD7225LF MT PL ASSY | 513-385 | | | | | 1 | | | | | | | |
| 3 | MEOD7230LF MT PL ASSY | 513-386 | | | | | | 1 | | | | | | |
| 3 | MEOD7820LF MT PL ASSY | 513-387 | | | | | | | 1 | | | | | |
| 3 | MEOD7825LF MT PL ASSY | 513-388 | | | | | | | | 1 | | | | |
| 3 | MEOD7830LF MT PL ASSY | 513-389 | | | | | | | | | 1 | | | |
| 3 | MEOD8420LF MT PL ASSY | 513-390 | | | | | | | | | | 1 | | |
| 3 | MEOD8425LF/8430LF MT PL ASSY | 513-391 | | | | | | | | | | | 1 | 1 |

PARTS LIST CONTINUED ON NEXT PAGE.

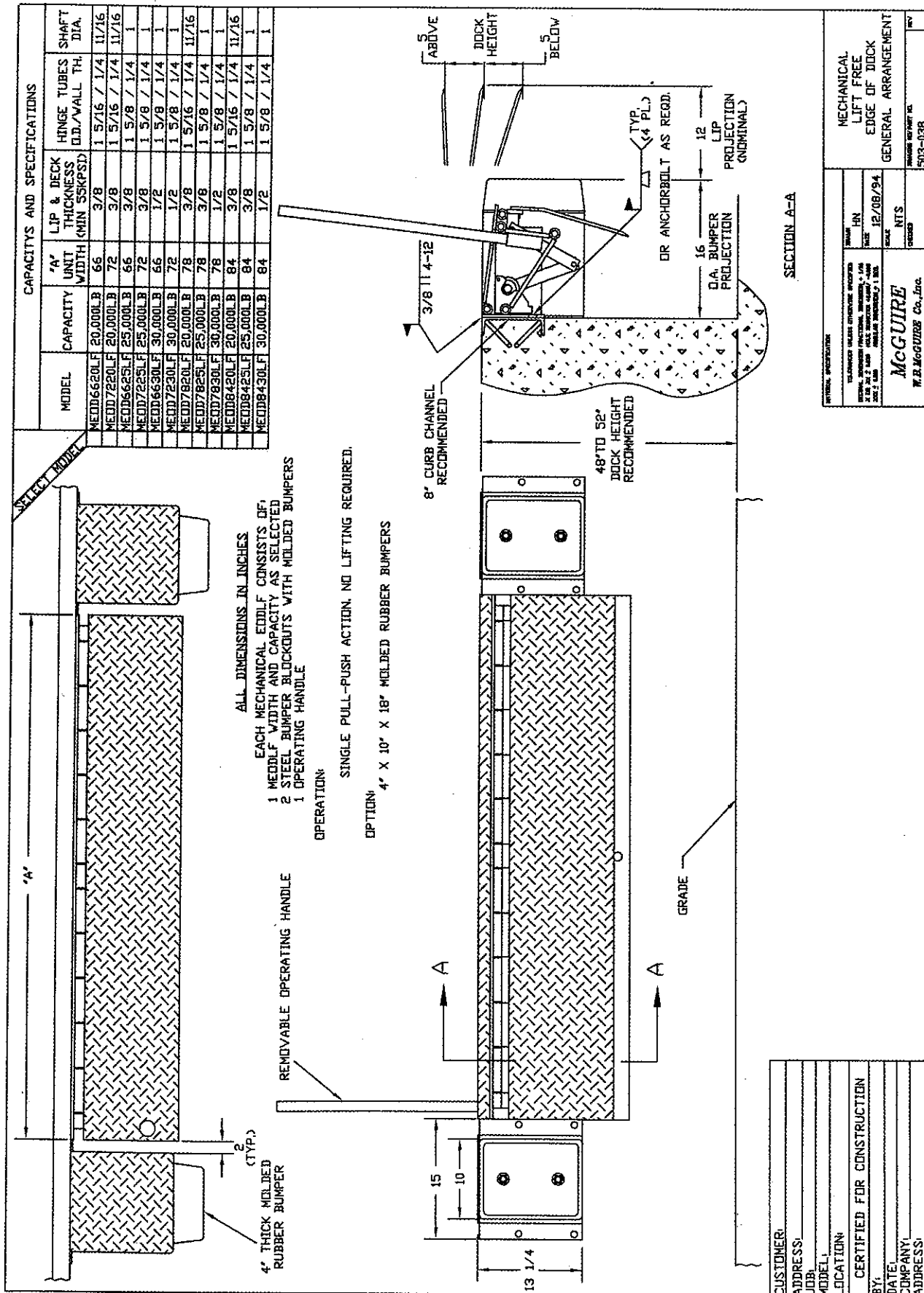
PARTS LIST (continued)

| ITEM | DESCRIPTION | PART NO | MEOD06620LF | MEOD06625LF | MEOD06630LF | MEOD07200LF | MEOD0725LF | MEOD07230LF | MEOD07820LF | MEOD07825LF | MEOD07830LF | MEOD08420LF | MEOD08425LF | MEOD08430LF |
|------|------------------------------|---------|-------------|-------------|-------------|-------------|------------|-------------|-------------|-------------|-------------|-------------|-------------|-------------|
| 4 | HINGE SHAFT 11/16DIAx61.75 | 523-164 | 2 | | | | | | | | | | | |
| 4 | HINGE SHAFT 1DIAx61.75 | 523-166 | | 2 | | | | | | | | | | |
| 4 | HINGE SHAFT 11/16DIAx67.75 | 523-165 | | | | 2 | | | | | | | | |
| 4 | HINGE SHAFT 1DIAx67.75 | 523-167 | | | | | | | | | | | | |
| 4 | HINGE SHAFT 11/16DIAx73.75 | 523-282 | | | | | 2 | | | | | | | |
| 4 | HINGE SHAFT 1DIAx73.75 | 523-286 | | | | | | | 2 | | | | | |
| 4 | HINGE SHAFT 11/16DIAx78.75 | 523-245 | | | | | | | | | | | | |
| 4 | HINGE SHAFT 1DIAx78.75 | 523-284 | | | | | | | | | | | | |
| 5 | SHAFT & LEVER ASSY LF | 513-388 | 1 | 1 | 1 | 1 | 1 | 2 | 1 | 1 | 2 | 2 | 2 | 2 |
| 6 | LF LEVER ARM, 20K | 523-327 | 2 | | 2 | 2 | | | 2 | | | 4 | | |
| 6 | LF LEVER ARM, 25K, 30K | 523-309 | | 2 | 2 | | | | | | | | | |
| 7 | LIFT ASSY | 513-369 | 1 | 1 | 1 | 1 | 1 | 1 | 1 | 1 | 1 | 1 | 1 | 1 |
| 8 | PLATED HEX BOLT, 6R5 | 122-177 | 1 | 1 | 1 | 1 | 1 | 1 | 1 | 1 | 1 | 1 | 1 | 1 |
| 9 | HANDLE | 523-289 | 1 | 1 | 1 | 1 | 1 | 1 | 1 | 1 | 1 | 1 | 1 | 1 |
| 10 | 1/2-13 NYLON JAM NUT | 121-029 | 1 | 1 | 1 | 1 | 1 | 1 | 1 | 1 | 1 | 1 | 1 | 1 |
| 11 | COTTER PIN | 113-073 | 3 | 3 | 3 | 3 | 3 | 3 | 3 | 3 | 3 | 3 | 3 | 3 |
| 12 | GLEYS PIN | 113-071 | 3 | 3 | 3 | 3 | 3 | 3 | 3 | 3 | 3 | 3 | 3 | 3 |
| 13 | STEEL BUMPER BLOCK | 513-392 | 2 | 2 | 2 | 2 | 2 | 2 | 2 | 2 | 2 | 2 | 2 | 2 |
| 14 | MOLDED BUMPER 4X10X13 | 108-305 | 2 | 2 | 2 | 2 | 2 | 2 | 2 | 2 | 2 | 2 | 2 | 2 |
| 15 | PLATED HEX NUT 1/2-13 | 121-013 | 4 | 4 | 4 | 4 | 4 | 4 | 4 | 4 | 4 | 4 | 4 | 4 |
| 16 | PLATED 1/2 LOCK WASHER | 121-063 | 4 | 4 | 4 | 4 | 4 | 4 | 4 | 4 | 4 | 4 | 4 | 4 |
| 17 | FLAT WASHER USS 1/2 | 121-084 | 8 | 8 | 8 | 8 | 8 | 8 | 8 | 8 | 8 | 8 | 8 | 8 |
| 18 | PLATED HEX BOLT 1/2-13X3 | 122-035 | 4 | 4 | 4 | 4 | 4 | 4 | 4 | 4 | 4 | 4 | 4 | 4 |
| 19 | PLATED HEX NUT 1/4-20 | 121-006 | - | - | - | - | - | - | - | - | - | - | - | - |
| 20 | LOCK WASHER 1/4 | 121-056 | - | - | - | - | - | - | - | - | - | - | - | - |
| 21 | PLATED HEX BOLT 1/4-20X3/4 | 122-013 | - | - | - | - | - | - | - | - | - | - | - | - |
| 22 | TORXON SPRING | 113-037 | 1 | 1 | 1 | 1 | 1 | 1 | 1 | 1 | 1 | 1 | 1 | 1 |
| 23 | WINDING PLUG | 107-036 | 1 | 1 | 1 | 1 | 1 | 1 | 1 | 1 | 1 | 1 | 1 | 1 |
| 24 | BEARING & FLANGE ASSY | 513-195 | 1 | 1 | 1 | 1 | 1 | 1 | 1 | 1 | 1 | 1 | 1 | 1 |
| 25 | SQ HD SET SCREW 3/8-16X1-1/4 | 122-163 | 2 | 2 | 2 | 2 | 2 | 2 | 2 | 2 | 2 | 2 | 2 | 2 |
| 26 | ANCHOR PLUG | 107-035 | 1 | 1 | 1 | 1 | 1 | 1 | 1 | 1 | 1 | 1 | 1 | 1 |
| 27 | PLATED HEX BOLT 5/16-18X3/4 | 122-014 | 4 | 4 | 4 | 4 | 4 | 4 | 4 | 4 | 4 | 4 | 4 | 4 |
| 28 | PLATED LOCK WASHER 5/16 | 121-057 | 4 | 4 | 4 | 4 | 4 | 4 | 4 | 4 | 4 | 4 | 4 | 4 |
| 29 | PLATED HEX NUT 5/16-18 | 121-007 | 2 | 2 | 2 | 2 | 2 | 2 | 2 | 2 | 2 | 2 | 2 | 2 |
| 30 | BEARING | 113-023 | 1 | 1 | 1 | 1 | 1 | 1 | 1 | 1 | 1 | 1 | 1 | 1 |
| 31 | MEODLF STRUT | 523-352 | 1 | 1 | 1 | 1 | 1 | 1 | 1 | 1 | 1 | 1 | 1 | 1 |
| 32 | MEODLF ROLLER | 523-321 | 1 | 1 | 1 | 1 | 1 | 1 | 1 | 1 | 1 | 1 | 1 | 1 |
| 33 | PIN, ROLL 3/8 DIA. X 1" | 131-345 | 4 | 4 | 4 | 4 | 4 | 4 | 4 | 4 | 4 | 4 | 4 | 4 |

THE FOLLOWING ITEMS ARE AVAILABLE FOR RESALE BUT ARE ALREADY ACCOUNTED FOR IN THE BOM

| | | | | | | | | | | | | | | |
|----|--------------------------------|---------|---|---|---|---|---|---|---|---|---|---|---|---|
| 34 | MEODLF STRUT | 523-257 | 1 | 1 | 1 | 1 | 1 | 1 | 1 | 1 | 1 | 1 | 1 | 1 |
| 35 | STRUT BRACKET LF | 523-326 | 2 | 2 | 2 | 2 | 2 | 2 | 2 | 2 | 2 | 2 | 2 | 2 |
| 36 | ROLLER BRACKET, LF | 523-324 | 2 | 2 | 2 | 2 | 2 | 2 | 2 | 2 | 2 | 2 | 2 | 2 |
| 37 | 12X12LF, BUMPER BLOCK ASSEMBLY | 513-393 | 2 | 2 | 2 | 2 | 2 | 2 | 2 | 2 | 2 | 2 | 2 | 2 |
| 38 | 12X12LF, 18" BUMPER BLOCK ASSY | 513-432 | 2 | 2 | 2 | 2 | 2 | 2 | 2 | 2 | 2 | 2 | 2 | 2 |
| 39 | BRACKET, MTG #2801 (EOD) | 113-036 | 2 | 2 | 2 | 2 | 2 | 2 | 2 | 2 | 2 | 2 | 2 | 2 |

GENERAL ARRANGEMENT - LIFT FREE EOD



NOTES:

NOTES:

W. B. McGUIRE WARRANTY

Mechanical Edge Of Dock Levelers

The W. B. McGuire Company warrants that its Lift Free Mechanical Edge Of Dock levelers will be free from defects in materials, labor and workmanship for a period of one (1) year from date of installation.

W. B. McGuire's sole obligation under this warranty is limited to repairing or replacing any part, which shall be determined by W. B. McGuire to be defective, and is conditioned upon the buyer giving written notice of any such defect within the warranty period. If W. B. McGuire concludes that repair, or replacement, is necessary, work will commence within a reasonable time period after the decision to repair to replace is made.

This warranty will not apply to any product which has been altered, modified, damaged or which has deteriorated due to abuse, neglect, misuse or by accident. Warranty will be VOID if any repairs are made or attempted to be made by any person not authorized by W. B. McGuire. Proper application, installation, maintenance and operation are required to keep warranty in force.

Periodic maintenance and adjustment is the sole responsibility of the owner.

This warranty is W. B. McGuire's exclusive expressed warranty. Warranty is limited to value of components only. W. B. McGuire assumes no liability for loss of the use of any equipment and expressly disclaims any liability for incidental or consequential damages. Warranties implied by law are limited in duration to the one year period described above.



Represented in This Area By:



One Hudson Ave.
Hudson, NY 12534
1-800-929-2553
518-828-7652 • Fax: 518-828-1262
www.wbmcguire.com