



# EUROSPEC

CYLINDER COLLECTION 2015/16

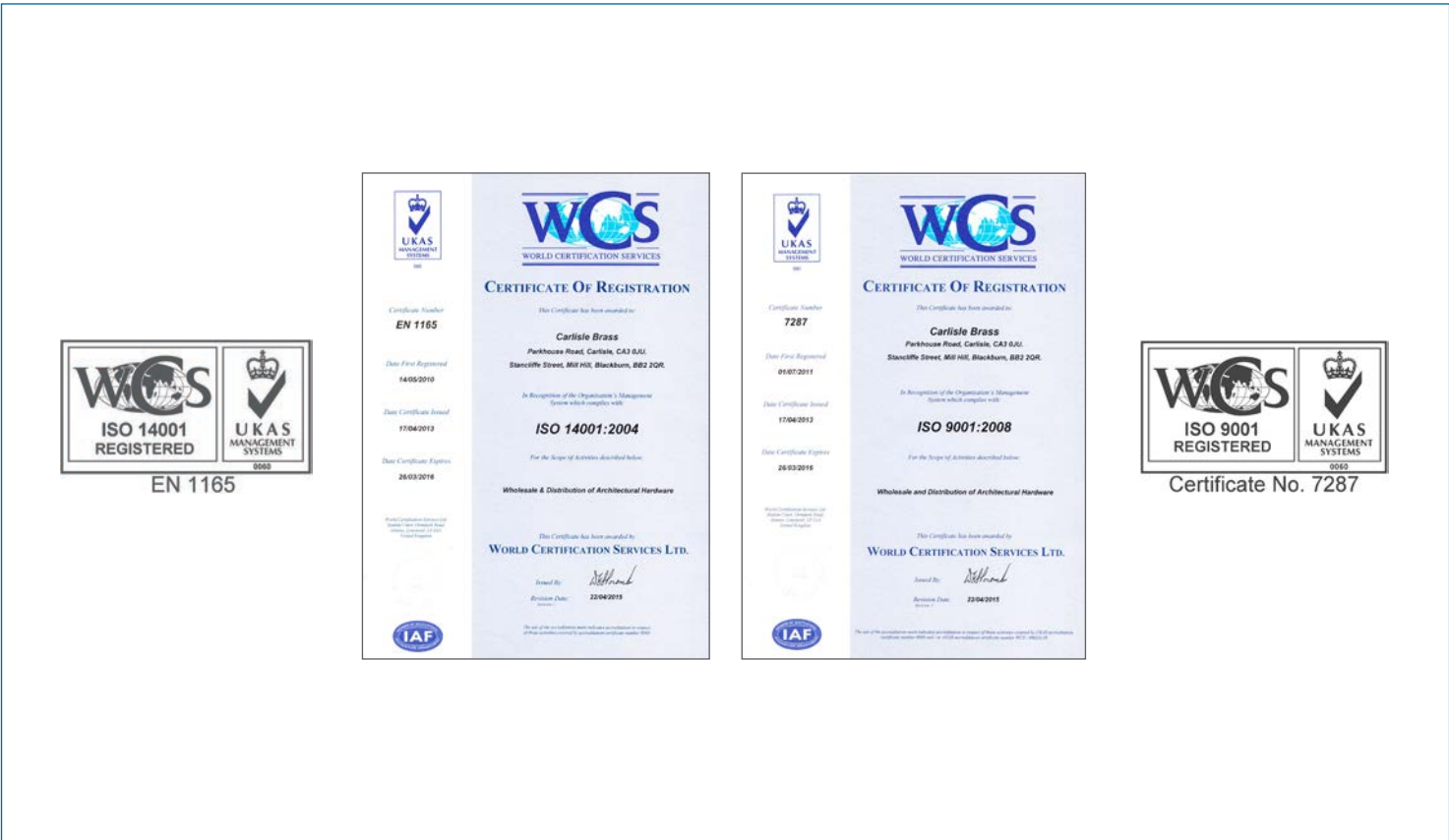
Eurospec was formed in 1997 as a subsidiary of Carlisle Brass specialising in the commercial sector of the architectural ironmongery market.

Following the merger of Carlisle Brass Ltd. and Eurospec in 2011 the brand has gone from strength to strength. Products include:

- High specification hinges
- Door control mechanisms
- Panic hardware
- Mortice locks and latches
- Full range of commercial door handles and pulls with suited ancillary products

Carlisle Brass Ltd. is an ISO 9001 and ISO 14001 certified company, which means that Eurospec branded products are fully traceable from point of manufacture to customer and that the environmental impact is being constantly measured and improved.

Accredited products carrying the Eurospec brand are stringently tested to ensure they comply to the latest regulations, which makes Eurospec branded products the ideal choice for the professional installer, architect or specifier.



## Economy 5 Pin Cylinders

Euro Single Cylinder	10
Euro Double Cylinder	10
Euro Cylinder & Turn	11
Oval Single Cylinder	11
Oval Double Cylinder	12
Oval Cylinder & Turn	12
Standard Rim Cylinder	13

## Architectural 5 Pin Cylinders

Euro Single Cylinder	14
Euro Double Cylinder	14
Rim Cylinder & Euro Cylinder/Turn (Set)	15
Euro Cylinder & Turn (Pair)	15
Euro Cylinder & Turn	16
Oval Single Cylinder	16
Oval Double Cylinder	17
Oval Cylinder & Turn	17
Standard Rim Cylinder	18
Threaded Rim Cylinder	18
Padlocks	19
Euro Bathroom Cylinder & Turn	20
Euro Single Thumbturn Only	20
Lever Insert for Cylinder Lock	21

## 1 Star Kitemarked 6 Pin Cylinders

Euro Single Cylinder	24	Rim Cylinders *Non Kitemarked	25
Euro Double Cylinder	24		
Euro Cylinder & Turn	25		

## Restricted 10 Pin Cylinders

Euro Single Cylinder	27	Oval Cylinder & Turn	30
Euro Double Cylinder	27	Scandinavian Oval Cylinder	30
Euro Cylinder & Turn	28	Padlocks	31
Classroom Cylinders	28	Universal Rim Cylinder	32
Oval Single Cylinder	29		
Oval Double Cylinder	29		

## 3 Star Kitemarked 6+ Pin Cylinders

Euro Single Cylinder	35
Euro Double Cylinder	35
Euro Cylinder & Turn	36

## Patented 15 Pin Cylinders

Euro Single Cylinder	38
Euro Double Cylinder	38
Euro Cylinder & Turn	39
Standard Rim Cylinder	39

## Keys & Accessories

Keys	41
Accessories	42-43

## Finishes

 EB Electro Brass	 PC Polished Chrome
 NP Nickel Plate	 SB Satin Brass
 PB Polished Brass	 SC Satin Chrome

## Symbols



**FD30/60**

The UK Construction Products Regulations require that door hardware for use on fire doors be safe and durable.



**BS EN 1303**

BS EN 1303 is the British/European standard requirements and testing methods covering cylinders for locks.



**5 YRS**

5 Year Guarantee against any manufacturing defect.



**TS 007:2014  
KM 585549**

Cylinders and security hardware are now classified in TS 007 according to star rating. Cylinders are able to achieve 1 or 3 stars. Security hardware can attain 2 stars. To attain 3 stars combine an MPx6 cylinder with 2 star rated security hardware and achieve the level of security required to resist known attack methods. MPx6+ cylinders will achieve 3 star rating without the need for 2 star handles.



**TS 007:2014  
KM 597142**



Official Police Security Initiative

Secured by design is the UK Policed flagship initiative supporting the principles of “designing out crime” prevention and security standards for a range of applications and products showing their logo have met the standards identified by this organisation.



**ANTI-DRILL**

Hardened steel anti-drill pins, plugs and disc.



**ANTI-SNAP**

Snap off front section (sacrificial cut).  
Anti-snap on both sides of unequal sized cylinders.



**BREAK OFF SYSTEM**

Snap off front section (sacrificial cut).



**ANTI-PLUG PULL**

Anti-plug pull feature.



**ANTI-PICK**

Special anti-pick pins.



**ANTI-BUMP**

Anti-bump feature.

## Suitable Environments for Use



Domestic



Commercial



Industrial

The security of any door assembly is a combination of many factors including the door construction and physical environment surrounding the door.

However, the cylinder is probably the most vulnerable element in the assembly and is therefore subject to severe requirements of resistance to physical attack and other aspects of security such as key control.

BS EN 1303:2005 is the European Standard which establishes assessment and test criteria for a cylinder to quantify its resistance to physical attack, durability and key security.

BS EN 1303:2005 classifies cylinders for locks using an 8 digit coding system. Features assessed include durability, fire resistance, key related security and attack resistance. The resulting 8 digit code can be used to directly compare the performance of one cylinder range against another.

### Durability

Three grades are identified according to the number of test cycles achieved:  
 Grade 4: 25,000 Cycles  
 Grade 5: 50,000 Cycles  
 Grade 6: 100,000 Cycles

### Corrosion and Temperature Resistance

Four grades are identified as follows:  
 Grade 0: No corrosion or temperature resistance requirements.  
 Grade A: BS EN 1670 Grade 3 corrosion resistance (96 hours NSS): no temperature resistance requirement.  
 Grade B: No corrosion resistance requirement: resistance to -20/+80°C temperature extremes.  
 Grade C: BS EN 1670 Grade 3 corrosion resistance: resistance to -20/+80°C temperature extremes.

**Note:**  
 No distinction is made between the inside and the outside of either the cylinder and/or door.

On completion of the test, the cylinder must operate using a maximum 1.5Nm torque on the key.

### Attack Resistance

Three grades are identified and the principal requirements are summarised below:

	Grade		
	0	1	2
Resistance to drilling (nett drilling time)	-	3 min	5 min
Resistance to chisel attack (number of defined blows)	-	30	40
Resistance to twisting attack (number of defined twists)	-	20	30
Resistance to plug/cylinder extraction (pull load)	-	15kN	15kN
Torque resistance of plug/cylinder	-	20Nm	20Nm

### Category of Use

One category is identified:  
 Grade 1: Keys shall resist a torque of 2.5Nm and still be usable.

### Door Mass

No Requirement.

### Fire Resistance

Two grades are identified as follows:  
 Grade 0: Not suitable for fire/smoke resistant door assemblies.  
 Grade 1: Suitable for fire/smoke resistant door assemblies subject to satisfactory assessment of the contribution of the cylinder to the fire resistance of the specified fire/smoke door assemblies. Such assessment is beyond the scope of this Eurospec standard (see EN 1634-1).

### Safety

No requirement.

### Key Related Security

Six grades are identified and the principal requirements are summarised below:

	Grade					
	1	2	3	4	5	6
Minimum number of effective	100	300	15 000	30 000	30 000	100 000
Minimum number of movable levers, pins, discs, etc	2	3	5	5	6	6
Coding on key could disclose combination	Yes	Yes	No	No	No	No
Torque resistance of plug	2.5Nm	5Nm	15Nm	15Nm	15Nm	15Nm



## What is TS 007:2014

TS 007:2014 + A1:2015 is the latest Kitemarked security standard for replacement lock cylinders and protective door furniture.

## Why TS 007:2014

TS 007:2014 is a Technical Specification created for the industry in response to the growing concerns that domestic homes are under threat from attacks due to the readily available information on the internet. Your cylinder at home needs to withstand 5 types of attack:

Drilling

Snapping

Plug Extraction

Picking

Bumping



**ANTI-DRILL**



**ANTI-SNAP**



**BREAK OFF SYSTEM**



**ANTI-PLUG PULL**



**ANTI-PICK**



**ANTI-BUMP**

## What's different in TS 007:2014

TS 007:2014 does not cover just basic forms of cylinder attack but also includes attack testing on the protective door furniture. It uses a star rating for both the cylinder and door furniture.

## What does TS 007:2014 cover

TS 007:2014 covers all aspects of attack tests on both cylinder and handles. It provides a mix and match option of door cylinders with protective door furniture when retrofitting and it allows the locksmith or security installer to achieve the required TS 007:2014 3 star rating.

## Who needs TS 007:2014

TS 007:2014 is aimed at the retrofit market UPVC and timber door market and anybody with a basic euro profile cylinder needs it. It is designed to offer similar levels of security found in complete door assemblies rated to PAS24 and complete lock assemblies rated to PAS and BS3621, 8621 and 10621.

## How do I meet the TS 007:2014 standard

There are two ways to meet the TS 007:2014 standard:

Cylinders marked with 1 star + door furniture marked with 2 stars = 3 star rating.

Cylinders marked with 3 stars = 3 star rating.

## How can I get my TS 007:2014 products

Simply call, fax or email Carlisle Brass and order your 1 star kitemarked MPx6 cylinders and 2 star kitemarked handles or 3 star kitemarked MPx6+ cylinders. Should you require keyed alike or master keyed cylinder options, just call our cylinder shop with your requirements and we will do the rest.

★ + ★★ = ★★★



**3 STAR SECURITY**



BS EN 1303:2005  
1 6 0 1 0 C 5 2



FD30/60



TS 007:2014  
KM 585549

★ + ★★ = ★★★



**3 STAR SECURITY**



BS EN 1303:2005  
1 6 0 1 0 C 6 2



FD30/60



TS 007:2014  
KM 597142



**Standard Security**

## CYE 5 PIN

5 Pin Economy cylinders in NP or SB finishes for applications where low cost is important. Available in KTD options only.

Popular sizes and finishes are available in high impact blister packs. Contact our sales office for details.



**Standard Security**

## CYA 5 PIN

5 Pin Architectural cylinders in PB, PC and SC finishes for applications that require an architectural finish and the ability to key to customers specific requirements. KTD, KA or UMK options available.



**High Security**

## CYX 6 PIN

1 Star 6 Pin British Standard Kitemarked cylinders in PB, PC and SC finishes for applications that require high cylinder security and ease of key duplication. KTD, KA or UMK options available.

Standard KTD supplied in high impact blister packs.



**High Security**

## CYH 10 PIN

10 Pin cylinders with restricted keys for applications that require higher key security. Available in PB, PC and SC finishes with keying options KTD, KA and UMK. Classroom cylinders and construction key facility available with this range.



**Maximum Security**

## CYM 6+ PIN

3 Star 6 Pin British Standard Kitemarked cylinders in PB, PC and SC finishes for applications that require the highest cylinder security and ease of key duplication. KTD or KA options available.

Standard KTD supplied in high impact blister packs.



**Maximum Security**

## CYP 15 PIN

15 Pin Patented cylinders with patented keys for applications that require the highest level of key and cylinder security. Additional keys can only be duplicated on production of owners security card. Available in PB, PC and SC finishes with keying options KTD, KA and UMK. Construction key facility available with this range.



## Considerations when designing Master Keying Systems...

How secure does the system need to be?

Consider the security of the cylinder and key:

### Cylinder Security

Maximum	We recommend MP15 and MPx6+ ranges
High	We recommend MP10 and MPx6 ranges
Standard	We recommend MP5 range

### Key Security

Maximum	We recommend MP15 range
High	We recommend MP10 range
Standard	We recommend MP5 or MPx6 ranges

How large and complex might the master keyed system need to be?

Up to 10,000 Doors	We recommend MP15 range
Up to 2,000 Doors	We recommend MP10 range
Up to 1,000 Doors	We recommend MPx6 range
Up to 400 Doors	We recommend MP5 range

What type of cylinders are needed for the master keyed system and are any special functions required?

Does the system need classroom function or construction keying?

Please see relevant information for cylinder types available at each section.

PLEASE NOTE: MPx6+ cylinders are not available Under Master Key.

A full range of architectural thumb turns are available for all Eurospec master keyed systems. Please see P42 for options.

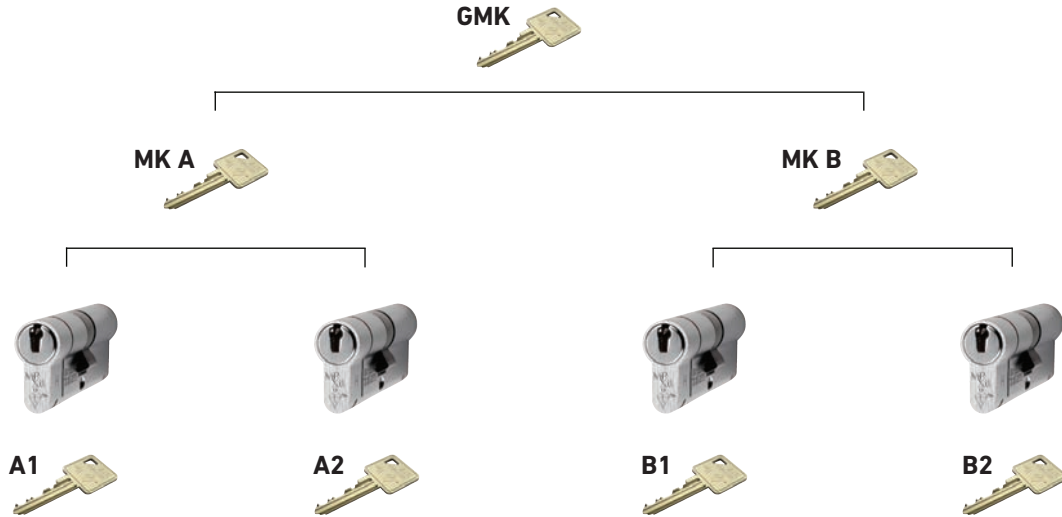


Technical support for you, or the end user is available from our master keying department if required as all our systems are created in house to customers own specifications.



## There are 2 main ways to design or create Master Keyed Systems:

**Hierarchy Method:** A master key opens only own group of cylinders and a grand master key opens all cylinders.



## X Chart or Planning Method:

<p><b>MASTER KEYING</b></p>		<p><b>Distributor</b></p> <p>Client Name: Contact Name: Address 1: Address 2: Address 3: City: Country: Phone: Email:</p>	<p><b>Project</b></p> <p>Site Description: Contact Name: Address 1: Address 2: Address 3: City: Country: Phone: Email:</p>	<p><b>Keys</b></p> <table border="1"> <thead> <tr> <th>No</th> <th>1</th> <th>2</th> <th>3</th> <th>4</th> <th>5</th> <th>6</th> <th>7</th> </tr> </thead> <tbody> <tr> <th>Key Above</th> <td></td> <td></td> <td></td> <td></td> <td></td> <td></td> <td></td> </tr> <tr> <th>Description</th> <td>Grand Master Key</td> <td>Master Key A</td> <td>Key A1</td> <td>Key A2</td> <td>Master Key B</td> <td>Key B1</td> <td>Key B2</td> </tr> <tr> <th>Key No</th> <td>GMK</td> <td>MK A</td> <td>A1</td> <td>A2</td> <td>MK B</td> <td>B1</td> <td>B2</td> </tr> </tbody> </table>							No	1	2	3	4	5	6	7	Key Above								Description	Grand Master Key	Master Key A	Key A1	Key A2	Master Key B	Key B1	Key B2	Key No	GMK	MK A	A1	A2	MK B	B1	B2
											No	1	2	3	4	5	6	7																								
Key Above																																										
Description	Grand Master Key	Master Key A	Key A1	Key A2	Master Key B	Key B1	Key B2																																			
Key No	GMK	MK A	A1	A2	MK B	B1	B2																																			
<b>Doors</b>																																										
No	Door No	Stamping	Description	Area	Lock	Qty	1	2	3	4	5	6	7																													
1	D001	A1	Office Door	Area A	Cylinder/Turn	1	X	X	X																																	
2	D002	A2	Office Door	Area A	Cylinder/Turn	1	X	X		X																																
3	D003	B1	Office Door	Area B	Cylinder/Turn	1	X				X	X																														
4	D004	B2	Office Door	Area B	Cylinder/Turn	1	X				X		X																													

Always remember the first rule of master keying - **KEEP IT SIMPLE!**

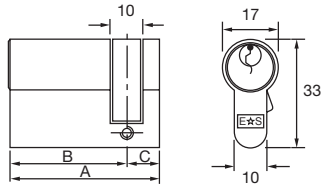
	Economy	Architectural
3 keys per cylinder	✓	✓
Open section keys	✓	✓
Brass keys (nickel plated)	✓	✓
SB or NP finish	✓	✗
PB, PC or SC finish	✗	✓
Euro profile	✓	✓
UK oval profile	✓	✓
Standard rim cylinder	✓	✓
Threaded rim cylinder	✗	✓
Padlock	✗	✓
KTD (keyed to differ)	✓	✓
KA (keyed alike)	✗	✓
UMK (under master key)	✗	✓
Unique master keying	✗	✓
BS EN 1303 grade 3	✗	✓
Anti-pick	✗	✓
Other cylinder sizes available to special order	✓	✓

# MP5 ECONOMY/ARCHITECTURAL 5 PIN CYLINDERS



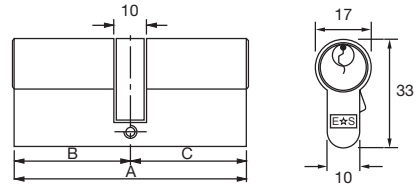
## Euro Single Cylinder

NP SB



## Euro Double Cylinder

NP SB



\* Only available in NP finish.

### KTD - Euro Single Cylinder

- CYE71140 A: 40mm B: 30mm C: 10mm
- CYE71145 A: 45mm B: 35mm C: 10mm

### KTD - Euro Double Cylinder

- CYE71260 A: 60mm B: 30mm C: 30mm
- CYE71270 A: 70mm B: 35mm C: 35mm
- CYE71280 A: 80mm B: 40mm C: 40mm
- CYE71290 A: 90mm B: 45mm C: 45mm
- CYE712100 A: 100mm B: 50mm C: 50mm

### KTD - Offset Euro Double Cylinder

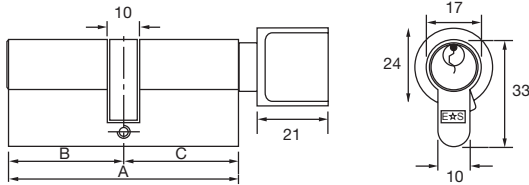
- CYE7123035\* A: 65mm B: 30mm C: 35mm
- CYE7123040 A: 70mm B: 30mm C: 40mm
- CYE7123050 A: 80mm B: 30mm C: 50mm
- CYE7123540 A: 75mm B: 35mm C: 40mm
- CYE7123545 A: 80mm B: 35mm C: 45mm
- CYE7123550 A: 85mm B: 35mm C: 50mm
- CYE7124045 A: 85mm B: 40mm C: 45mm
- CYE7124050 A: 90mm B: 40mm C: 50mm
- CYE7124055 A: 95mm B: 40mm C: 55mm
- CYE7124060 A: 100mm B: 40mm C: 60mm
- CYE7124550 A: 95mm B: 45mm C: 50mm
- CYE7124555 A: 100mm B: 45mm C: 55mm

	✓		✓		✗		✓
	✓		✗		✗		✗

	✓		✓		✗		✓
	✓		✗		✗		✗

## Euro Cylinder & Turn

NP SB



\* Only available in NP finish.

### KTD - Euro Cylinder & Turn

CYE71360	A: 60mm B: 30mm C: 30mm
CYE71370	A: 70mm B: 35mm C: 35mm
CYE71380	A: 80mm B: 40mm C: 40mm
CYE71390	A: 90mm B: 45mm C: 45mm

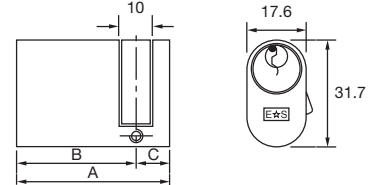
### KTD - Offset Euro Cylinder & Turn

CYE7133040*	A: 70mm B: 30mm C: 40mm
CYE7133540*	A: 75mm B: 35mm C: 40mm
CYE7133555*	A: 90mm B: 35mm C: 55mm
CYE7134030*	A: 70mm B: 40mm C: 30mm
CYE7134035*	A: 75mm B: 40mm C: 35mm
CYE7134050	A: 90mm B: 40mm C: 50mm
CYE7134060*	A: 100mm B: 40mm C: 60mm
CYE7134535*	A: 80mm B: 45mm C: 35mm
CYE7134555*	A: 100mm B: 45mm C: 55mm
CYE7135040	A: 90mm B: 50mm C: 40mm
CYE7135535*	A: 90mm B: 55mm C: 35mm
CYE7135545*	A: 100mm B: 55mm C: 45mm
CYE7136040*	A: 100mm B: 60mm C: 40mm

	✓		✓		✗		✓
	✓		✗		✗		✗

## Oval Single Cylinder

NP SB



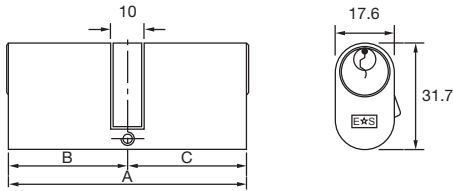
### KTD - Oval Single Cylinder

CYE72140	A: 40mm B: 30mm C: 10mm
CYE72145	A: 45mm B: 35mm C: 10mm

	✓		✓		✗		✓
	✓		✗		✗		✗

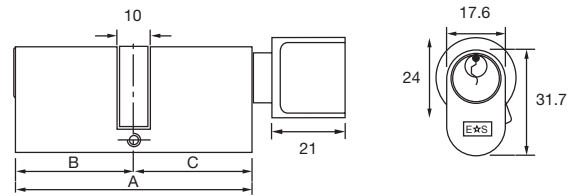
## Oval Double Cylinder

NP SB



## Oval Cylinder & Turn

NP SB



### KTD - Oval Double Cylinder

- CYE72260 A: 60mm B: 30mm C: 30mm
- CYE72270 A: 70mm B: 35mm C: 35mm

### KTD - Oval Cylinder & Turn

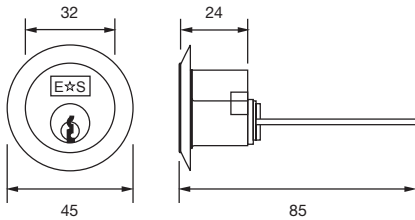
- CYE72360 A: 60mm B: 30mm C: 30mm
- CYE72370 A: 70mm B: 35mm C: 35mm

	✓		✓		✗		✓
	✓		✗		✗		✗

	✓		✓		✗		✓
	✓		✗		✗		✗

## Standard Rim Cylinder

NP SB



For additional key codes and accessories please see P41-43



## KTD - Standard Rim Cylinder

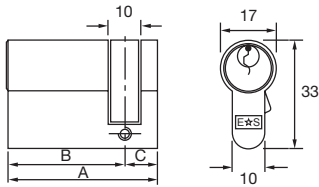
CYE73520 Rim Cylinder



	✓		✓		✗		✓
	✓		✗		✗		✗

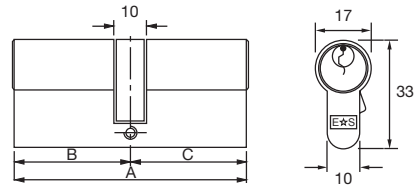
## Euro Single Cylinder

PB
  PC
  SC



## Euro Double Cylinder

PB
  PC
  SC



### KTD - Euro Single Cylinder

**KA**

**UMK**

CYA71140	A: 40mm B: 30mm C: 10mm	CYB74140	CYB77140
CYA71145	A: 45mm B: 35mm C: 10mm	CYB74145	CYB77145
CYA71150	A: 50mm B: 40mm C: 10mm	CYB74150	CYB77150

### KTD - Euro Double Cylinder

**KA**

**UMK**

CYA71260	A: 60mm B: 30mm C: 30mm	CYB74260	CYB77260
CYA71270	A: 70mm B: 35mm C: 35mm	CYB74270	CYB77270
CYA71280	A: 80mm B: 40mm C: 40mm	CYB74280	CYB77280
CYA71290	A: 90mm B: 45mm C: 45mm	CYB74290	CYB77290
CYA712100	A: 100mm B: 50mm C: 50mm	CYB742100	CYB772100
CYA712110	A: 110mm B: 55mm C: 55mm	CYB742110	CYB772110

### KTD - Offset Euro Double Cylinder

CYA7123040	A: 70mm B: 30mm C: 40mm	CYB7423040	CYB7723040
CYA7123050	A: 80mm B: 30mm C: 50mm	CYB7423050	CYB7723050
CYA7123540	A: 75mm B: 35mm C: 40mm	CYB7423540	CYB7723540
CYA7123545	A: 80mm B: 35mm C: 45mm	CYB7423545	CYB7723545
CYA7123550	A: 85mm B: 35mm C: 50mm	CYB7423550	CYB7723550
CYA7124050	A: 90mm B: 40mm C: 50mm	CYB7424050	CYB7724050
CYA7124060	A: 100mm B: 40mm C: 60mm	CYB7424060	CYB7724060
CYA7124550	A: 95mm B: 45mm C: 50mm	CYB7424550	CYB7724550

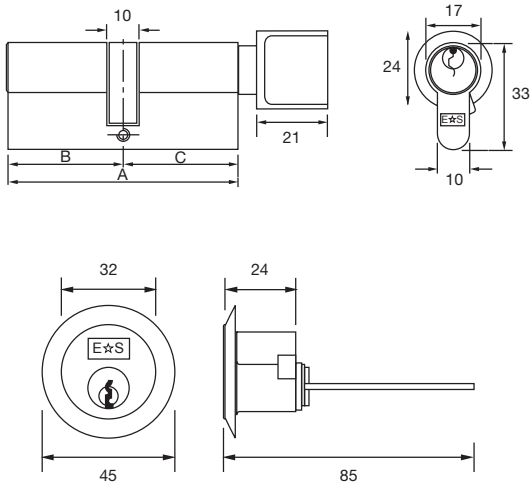
	✓		✓		✗		✓
	✓		✓		✗		✗

	✓		✓		✗		✓
	✓		✓		✗		✗



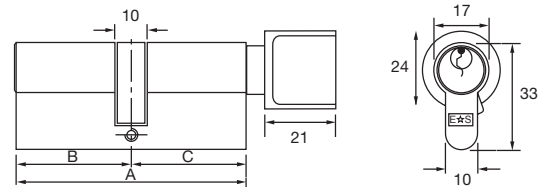
## Rim Cylinder & Euro Cylinder/Turn (Set)

PB
  PC
  SC



## Euro Cylinder & Turn (Pair)

PB
  PC
  SC



## KTD - Rim Cylinder & Euro Cylinder/Turn (Set)

CYA71370/73520    A: 70mm B: 35mm C: 35mm

## KTD - Euro Cylinder & Turn (Pair)

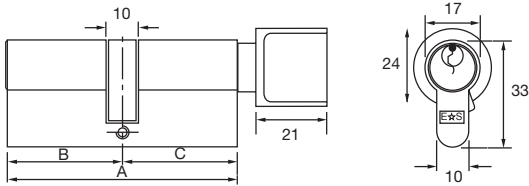
CYB71370/2    A: 70mm B: 35mm C: 35mm

	✓		✓		✗		✓
	✓		✓		✗		✗

	✓		✓		✗		✓
	✓		✓		✗		✗

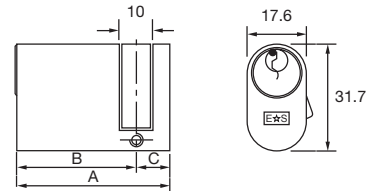
## Euro Cylinder & Turn

PB
  PC
  SC



## Oval Single Cylinder

PB
  PC
  SC



### KTD - Euro Cylinder & Turn

**KA**

**UMK**

CYA71360	A: 60mm B: 30mm C: 30mm	CYB74360	CYB77360
CYA71370	A: 70mm B: 35mm C: 35mm	CYB74370	CYB77370
CYA71380	A: 80mm B: 40mm C: 40mm	CYB74380	CYB77380
CYA71390	A: 90mm B: 45mm C: 45mm	CYB74390	CYB77390
CYA713100	A: 100mm B: 50mm C: 50mm	CYB743100	CYB773100

### KTD - Oval Single Cylinder

**KA**

**UMK**

CYA72140	A: 40mm B: 30mm C: 10mm	CYB75140	CYB78140
CYA72145	A: 45mm B: 35mm C: 10mm	CYB75145	CYB78145
CYA72150	A: 50mm B: 40mm C: 10mm	CYB75150	CYB78150

### KTD - Offset Euro Cylinder & Turn

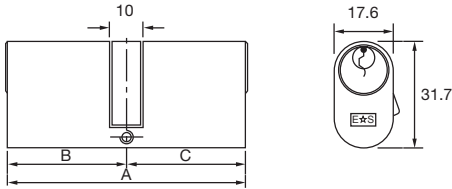
CYA7133040	A: 70mm B: 30mm C: 40mm	CYB7433040	CYB7733040
CYA7134030	A: 70mm B: 40mm C: 30mm	CYB7434030	CYB7734030
CYA7133545	A: 80mm B: 35mm C: 45mm	CYB7433545	CYB7733545
CYA7134535	A: 80mm B: 45mm C: 35mm	CYB7434535	CYB7734535
CYA7134060	A: 100mm B: 40mm C: 60mm	CYB7434060	CYB7734060
CYA7136040	A: 100mm B: 60mm C: 40mm	CYB7436040	CYB7736040

	✓		✓		✗		✓
	✓		✓		✗		✗

	✓		✓		✗		✓
	✓		✓		✗		✗

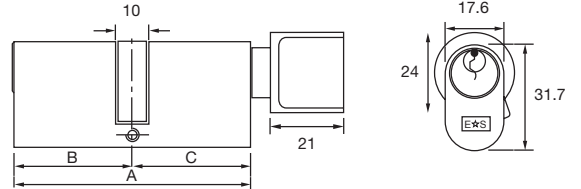
## Oval Double Cylinder

PB
  PC
  SC



## Oval Cylinder & Turn

PB
  PC
  SC



### KTD - Oval Double Cylinder

KA

UMK

CYA72260	A: 60mm B: 30mm C: 30mm	CYB75260	CYB78260
CYA72270	A: 70mm B: 35mm C: 35mm	CYB75270	CYB78270
CYA72280	A: 80mm B: 40mm C: 40mm	CYB75280	CYB78280

### KTD - Oval Cylinder & Turn

KA

UMK

CYA72360	A: 60mm B: 30mm C: 30mm	CYB75360	CYB78360
CYA72370	A: 70mm B: 35mm C: 35mm	CYB75370	CYB78370
CYA72380	A: 80mm B: 40mm C: 40mm	CYB75380	CYB78380



FD30/60



BS EN 1303



TS 007:2014  
KM 585549



FD30/60



BS EN 1303

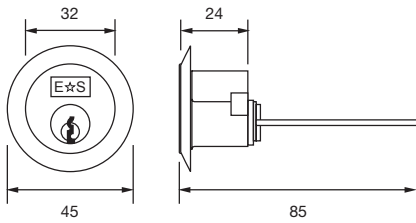


TS 007:2014  
KM 585549



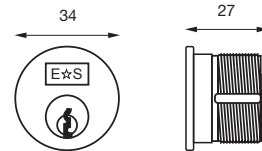
## Standard Rim Cylinder

PB
  PC
  SC



## Threaded Rim Cylinder

PB
  PC
  SC



### KTD - Standard Rim Cylinder

**KA**

**UMK**

CYA73520

Rim Cylinder

CYB76520

CYB79520

### KTD - Threaded Rim Cylinder

**KA**

**UMK**

CYA73620

Threaded Rim Cylinder

CYB76620

CYB79620

CYA73620/2

Threaded Rim Cylinder (Pair)

N/A

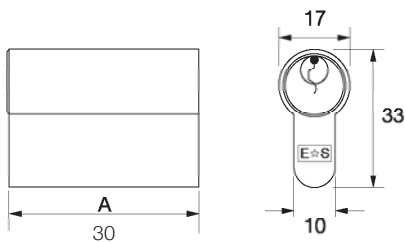
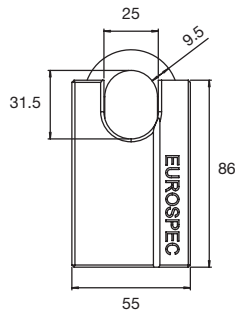
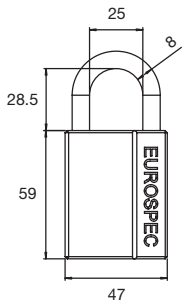
N/A

	✓		✓		✗		✓
	✓		✓		✗		✗

	✓		✓		✗		✓
	✓		✓		✗		✗

## Open Shackle Padlock / Closed Shackle Padlock

SC



### KTD - Open Shackle Padlock KA UMK

CYA7PLO47 Open Shackle Padlock 47mm  
 CYB7PLO47KA CYB7PLO47UMK

#### Cylinders to suit open shackle padlocks

CYA71130SC/O CYB74130/O CYB77130/O

### KTD - Closed Shackle Padlock KA UMK

CYA7PLC55 Closed Shackle Padlock 55mm  
 CYB7PLC55KA CYB7PLC55UMK

#### Cylinders to suit closed shackle padlocks

CYA71130SC/C CYB74130/C CYB77130/C

## Security Cards for MK Suites



Supplied with all new MK Suites.

Distributor

This security card is retained by the distributor and a copy of this card must be produced to Eurospec with any orders for additional keys or cylinders. The distributor card contains either the key number or master key system reference number.

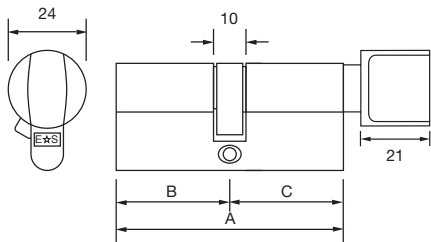
Owner

This security card is retained by the owner of the cylinder or master key system and must be produced to the distributor with any orders for additional keys or cylinders. The owner card contains either the key number or master key system reference number in addition to all distributor details.

	✓		✓		✗		✓
	✓		✗		✗		✗

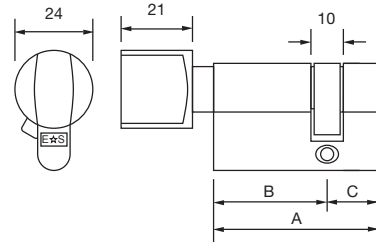
**Euro Bathroom Cylinder & Turn**

PB
  PC
  SC



**Euro Single Thumbturn Only**

PB
  PC
  SC



**Euro Bathroom Cylinder & Turn**

CYA70470    A: 70mm B: 35mm C: 35mm

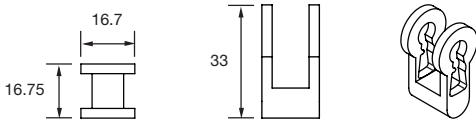
**Euro Single Thumbturn Only**

CYA70445    A: 45mm B: 35mm C: 10mm

	✓		✓		✗		✓
	✓		✗		✗		✗

	✓		✓		✗		✓
	✓		✗		✗		✗

## Lever Insert for Euro Cylinder Lock



For additional key codes and accessories please see P41-43



## Lever Insert for Cylinder Lock c/w 2 Keys

**AEIL5000** Insert for euro profile mortice lock cases  
c/w 2 mortice keys



	✓		✓		✓		✓
	✗		✗		✗		✗







# MPx6 BS KITEMARKED 6 PIN CYLINDERS 1 STAR RATED

## Cylinders

BS Kitemarked KM 585549

TS 007:2014 + A1:2015 1 Star

BS EN 1303 cylinder security grade 2

Break off system

Anti - pick

Anti - bump

Anti - drill

Anti - plug pull

Anti - twist

Hardened steel anti - drill plate

PB, PC or SC finish

Euro profile

Standard rim cylinder

Threaded rim cylinder

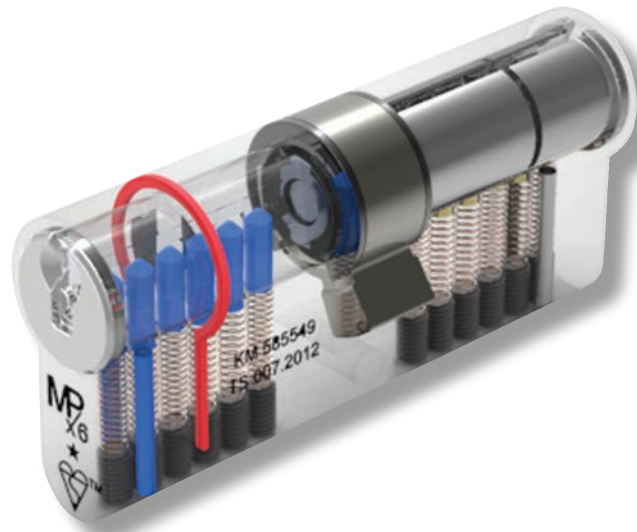
Keyed to differ (KTD)

Keyed alike (KA)

Under master key (UMK)

N.B. Master keyed cylinders retain the kitemark status

Other cylinder sizes available to special order



## Keys

Hard wearing nickel silver keys

Large master keying capabilities (systems up to 1,000 doors)

Standard key section for ease of key duplication

Extended neck for use with security escutcheons

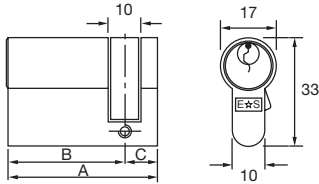
3 keys supplied with each cylinder

BS EN 1303 key security - grade 5



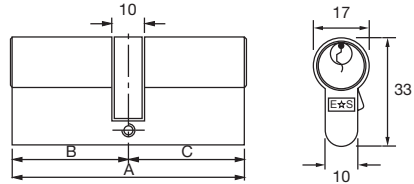
## Euro Single Cylinder

 PB  PC  SC



## Euro Double Cylinder

 PB  PC  SC



### KTD - Euro Single Cylinder

**KA**

**UMK**

CYX71146	A: 46mm B: 36mm C: 10mm	CYF74146	CYF77146
CYX71150	A: 50mm B: 40mm C: 10mm	CYF74150	CYF77150

### KTD - Euro Double Cylinder

**KA**

**UMK**

CYX71270	A: 70mm B: 35mm C: 35mm	CYF74270	CYF77270
CYX71280	A: 80mm B: 40mm C: 40mm	CYF74280	CYF77280
CYX71290	A: 90mm B: 45mm C: 45mm	CYF74290	CYF77290
CYX712100	A: 100mm B: 50mm C: 50mm	CYF742100	CYF772100
CYX712110	A: 110mm B: 55mm C: 55mm	CYF742110	CYF772110

### KTD - Offset Euro Double Cylinder

**KA**

**UMK**

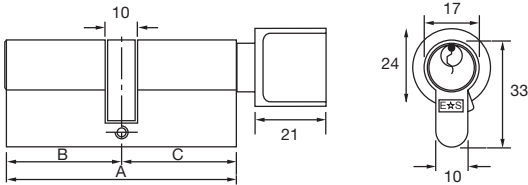
CYX7123540	A: 75mm B: 35mm C: 40mm	CYF7423540	CYF7723540
CYX7123545	A: 80mm B: 35mm C: 45mm	CYF7423545	CYF7723545
CYX7123550	A: 85mm B: 35mm C: 50mm	CYF7423550	CYF7723550
CYX7124050	A: 90mm B: 40mm C: 50mm	CYF7424050	CYF7724050
CYX7124060	A: 100mm B: 40mm C: 60mm	CYF7424060	CYF7724060
CYX7124550	A: 95mm B: 45mm C: 50mm	CYF7424550	CYF7724550
CYX7124555	A: 100mm B: 45mm C: 55mm	CYF7424555	CYF7724555

	✓		✓		✗		
	✓		✓		✓		✓
	✓		✓		✓		✓

	✓		✓		✗		
	✓		✓		✓		✓
	✓		✓		✓		✓

## Euro Cylinder & Turn

PB
  PC
  SC



### KTD - Euro Cylinder & Turn

KA

UMK

CYX71370	A: 70mm B: 35mm C: 35mm	CYF74370	CYF77370
CYX71380	A: 80mm B: 40mm C: 40mm	CYF74380	CYF77380
CYX71390	A: 90mm B: 45mm C: 45mm	CYF74390	CYF77390
CYX713100	A: 100mm B: 50mm C: 50mm	CYF743100	CYF773100

### KTD - Offset Euro Cylinder & Turn

KA

UMK

CYX7133545	A: 80mm B: 35mm C: 45mm	CYF7433545	CYF7733545
CYX7134060	A: 100mm B: 40mm C: 60mm	CYF7434060	CYF7734060
CYX7134535	A: 80mm B: 45mm C: 35mm	CYF7434535	CYF7734535
CYX7136040	A: 100mm B: 60mm C: 40mm	CYF7436040	CYF7736040

		✓		✓		✗	
	✓		✓		✓		✓
	✓		✓		✓		

## Security Cards for MK Suites



Supplied with all new MK Suites.

Distributor

This security card is retained by the distributor and a copy of this card must be produced to Eurospec with any orders for additional keys or cylinders. The distributor card contains either the key number or master key system reference number.

Owner

This security card is retained by the owner of the cylinder or master key system and must be produced to the distributor with any orders for additional keys or cylinders. The owner card contains either the key number or master key system reference number in addition to all distributor details.

For additional key codes and accessories please see P41-43



**Non-Kitemarked standard and threaded rim cylinders also available under MPx6 range**



### KTD - Rim Cylinders

KA

UMK

CYX73524	Rim Cylinder	CYF76524	CYF79524
CYX73624	Threaded Rim Cylinder	CYF76624	CYF79624

# MP10 RESTRICTED 10 PIN CYLINDERS

## Cylinders

BS EN 1303 cylinder security grade 2\*

Anti - pick

Anti - bump

Anti - drill

PB, PC or SC finish

Euro profile

UK oval profile

Scandinavian oval profile

Universal rim cylinder

Padlock

Keyed to differ (KTD)

Keyed alike (KA)

Under master key (UMK)

Classroom function available (CR) see P28

Construction key capabilities (CK)

The construction key is used during installation, the user key is used to re-code the cylinder and automatically exclude the construction key

Other cylinder sizes available to special order



## Keys

Hard wearing nickel silver keys

Extensive master keying capabilities (systems up to 2,000 doors)

Restricted key profile only available through approved distributors

Extended neck for use with security escutcheons

Over 200 possible key profiles totalling more than 2 million key differs

Specially designed unique keyway

6 main top cuts

4 special side pin cuts

3 keys supplied with each cylinder

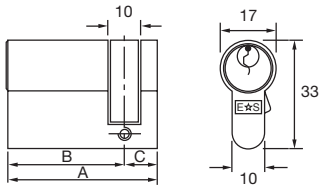
BS EN 1303 key security - grade 6 (maximum grade)



\* When used in conjunction with AEB5000 security escutcheon

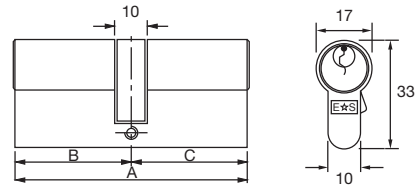
## Euro Single Cylinder

PB
  PC
  SC



## Euro Double Cylinder

PB
  PC
  SC



### KTD - Euro Single Cylinder

KA

UMK

CYH71142	A: 42mm B: 32mm C: 10mm	CYG74142	CYG77142
CYH71146	A: 46mm B: 36mm C: 10mm	CYG74146	CYG77146
CYH71150	A: 50mm B: 40mm C: 10mm	CYG74150	CYG77150

### KTD - Euro Double Cylinder

KA

UMK

CYH71264	A: 64mm B: 32mm C: 32mm	CYG74264	CYG77264
CYH71270	A: 70mm B: 35mm C: 35mm	CYG74270	CYG77270
CYH71280	A: 80mm B: 40mm C: 40mm	CYG74280	CYG77280
CYH71290	A: 90mm B: 45mm C: 45mm	CYG74290	CYG77290
CYH712100	A: 100mm B: 50mm C: 50mm	CYG742100	CYG772100

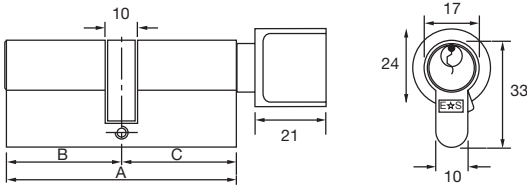
### KTD - Offset Euro Double Cylinder

CYH7123240	A: 72mm B: 32mm C: 40mm	CYG7423240	CYG7723240
CYH7123250	A: 82mm B: 32mm C: 50mm	CYG7423250	CYG7723250
CYH7123540	A: 75mm B: 35mm C: 40mm	CYG7423540	CYG7723540
CYH7123545	A: 80mm B: 35mm C: 45mm	CYG7423545	CYG7723545
CYH7123550	A: 85mm B: 35mm C: 50mm	CYG7423550	CYG7723550
CYH7123555	A: 90mm B: 35mm C: 55mm	CYG7423555	CYG7723555
CYH7124045	A: 85mm B: 40mm C: 45mm	CYG7424045	CYG7724045
CYH7124050	A: 90mm B: 40mm C: 50mm	CYG7424050	CYG7724050
CYH7124055	A: 95mm B: 40mm C: 55mm	CYG7424055	CYG7724055
CYH7124060	A: 100mm B: 40mm C: 60mm	CYG7424060	CYG7724060
CYH7124550	A: 95mm B: 45mm C: 50mm	CYG7424550	CYG7724550
CYH7124555	A: 100mm B: 45mm C: 55mm	CYG7424555	CYG7724555

		✓		✓		✓	
	✓		✗		✗		✓
	✓		✓		✓		✗
5 YRS		FD30/60		BS EN 1303		TS 007:2014 KM 585549	Secured by Design UKAS 2999

		✓		✓		✓	
	✓		✗		✗		✓
	✓		✓		✓		✗
5 YRS		FD30/60		BS EN 1303		TS 007:2014 KM 585549	Secured by Design UKAS 2999

## Euro Cylinder & Turn



### KTD - Euro Cylinder & Turn

**KA**

**UMK**

CYH71364	A: 64mm B: 32mm C: 32mm	CYG74364	CYG77364
CYH71370	A: 70mm B: 35mm C: 35mm	CYG74370	CYG77370
CYH71380	A: 80mm B: 40mm C: 40mm	CYG74380	CYG77380
CYH71390	A: 90mm B: 45mm C: 45mm	CYG74390	CYG77390
CYH713100	A: 100mm B: 50mm C: 50mm	CYG743100	CYG773100

### KTD - Offset Euro Cylinder & Turn

CYH7133240	A: 72mm B: 32mm C: 40mm	CYG7433240	CYG7733240
CYH7133545	A: 80mm B: 35mm C: 45mm	CYG7433545	CYG7733545
CYH7133555	A: 90mm B: 35mm C: 55mm	CYG7433555	CYG7733555
CYH7134032	A: 72mm B: 40mm C: 32mm	CYG7434032	CYG7734032
CYH7134050	A: 90mm B: 40mm C: 50mm	CYG7434050	CYG7734050
CYH7134060	A: 100mm B: 40mm C: 60mm	CYG7434060	CYG7734060
CYH7134535	A: 80mm B: 45mm C: 35mm	CYG7434535	CYG7734535
CYH7134550	A: 95mm B: 45mm C: 50mm	CYG7434550	CYG7734550
CYH7135040	A: 90mm B: 50mm C: 40mm	CYG7435040	CYG7735040
CYH7135045	A: 95mm B: 50mm C: 45mm	CYG7435045	CYG7735045
CYH7136040	A: 100mm B: 60mm C: 40mm	CYG7436040	CYG7736040

## Classroom Cylinders

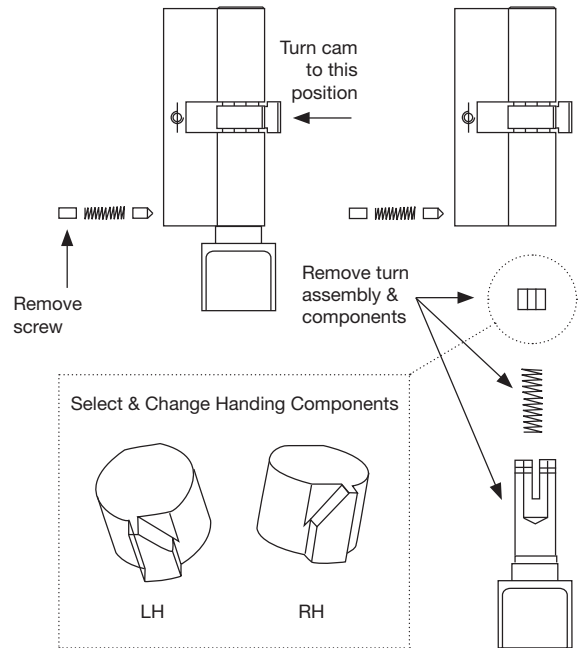


The Eurospec 10 Pin classroom cylinders have been designed to provide a simple and effective solution to classroom applications and can be ordered in 70 or 80mm.

The main function of the classroom cylinder is to allow the key holder to lock or unlock the door at all times but allow a pupil to unlock the door from the inside in an emergency situation. The standard safety feature will ensure the door cannot be locked from the inside and the internal clutch mechanism will ensure a pupil cannot prevent a key holder from entering the room.

All classroom cylinders can be ordered keyed to differ, keyed alike or part of a master keyed system. The classroom cylinders can be ordered as (RH) clockwise or (LH) anti-clockwise unlocking to suit the door handling and in the unlikely event that the cylinder needs to be changed, a simple instruction sheet is included with each cylinder.

A range of alternative thumbturns are also available (see p38)



### KTD - Classroom Cylinder

**KA**

**UMK**

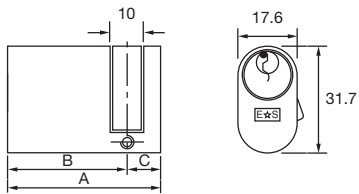
CYH71370CR	A: 70mm B: 35mm C: 35mm	CYG74370CR	CYG77370CR
CYH71380CR	A: 80mm B: 40mm C: 40mm	CYG74380CR	CYG77380CR

	✓		✓		✓		
	✓		✗		✗		✓
	✓		✓		✓		✗

	✓		✓		✓		
	✓		✗		✗		✓
	✓		✓		✓		✗

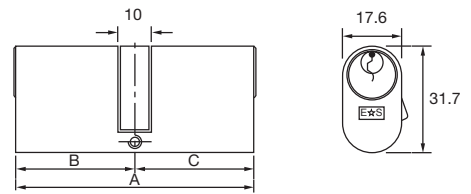
## Oval Single Cylinder

PB
  PC
  SC



## Oval Double Cylinder

PB
  PC
  SC



### KTD - Oval Single Cylinder

KA

UMK

CYH72142	A: 42mm B: 32mm C: 10mm	CYG75142	CYG78142
CYH72146	A: 46mm B: 36mm C: 10mm	CYG75146	CYG78146

### KTD - Oval Double Cylinder

KA

UMK

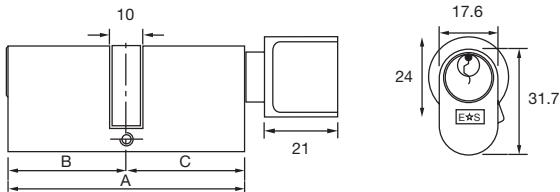
CYH72264	A: 64mm B: 32mm C: 32mm	CYG75264	CYG78264
CYH72270	A: 70mm B: 35mm C: 35mm	CYG75270	CYG78270
CYH72280	A: 80mm B: 40mm C: 40mm	CYG75280	CYG78280

		✓		✓		✓			
	✓		✗		✗		✓		✓
	✓		✓		✓		✗		✗

		✓		✓		✓			
	✓		✗		✗		✓		✓
	✓		✓		✓		✗		✗

## Oval Cylinder & Turn

PB PC SC

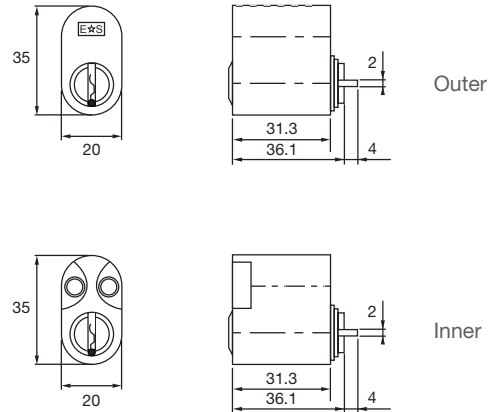


### KTD - Oval Double Cylinder & Turn KA UMK

CYH72364	A: 64mm B: 32mm C: 32mm	CYG75364	CYG78364
CYH72370	A: 70mm B: 35mm C: 35mm	CYG75370	CYG78370
CYH72380	A: 80mm B: 40mm C: 40mm	CYG75380	CYG78380

## Scandinavian Oval Cylinder

PB SC



### KTD - Scandinavian Oval Cylinder KA UMK

CYH72-SO31	31mm Outer	CYG75-SO31	CYG78-SO31
CYH72-SP31/31	31mm Inner	CYG75-SI31	CYG78-SI31

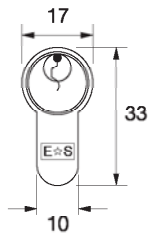
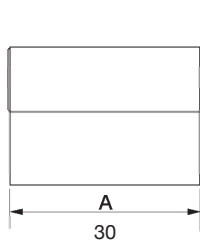
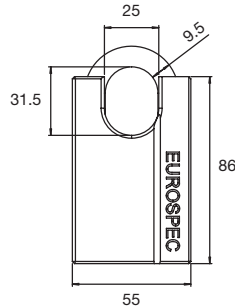
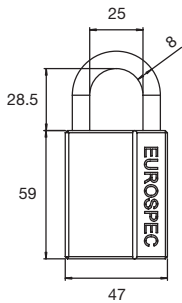
	✓		✓		✓				
	✓		✗		✗		✓		✓
	✓		✓		✓		✗		✗

	✓		✓		✓				
	✓		✗		✗		✓		✓
	✓		✓		✓		✗		✗



## Open and Closed Shackle Padlock

SC



## KTD - Open Shackle Padlock

KA

UMK

CYH7PLO47

Open Shackle Padlock  
47mm

CYG7PLO47KA

CYG7PLO47UMK

## Cylinders to suit open shackle padlocks

CYH71130SC/O

CYG74130SC/O

CYG77130SC/O

## KTD - Closed Shackle Padlock

KA

UMK

CYH7PLC55

Closed Shackle Padlock  
55mm

CYG7PLC55KA

CYG7PLC55UMK

## Cylinders to suit closed padlocks

CYH71130SC/C

CYG74130SC/C

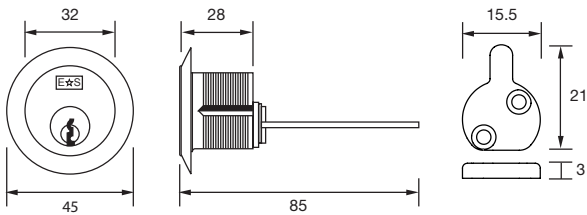
CYG77130SC/C

		✓		✓		✓	
	✓		✗		✗		✓
	✓		✓		✗		✗

		✓		✓		✓	
	✓		✗		✗		✓
	✓		✓		✗		✗

## Universal Rim Cylinder

PB
  PC
  SC



### KTD - Universal Rim Cylinder

**KA**

**UMK**

CYH73525    Universal Rim Cylinder    CYG76525    CYG79525

Suitable for all major branded rim nightlatches and easily converts to suit 29mm diameter screw-in mortice locks.

	✓		✓		✓		
	✓		✗		✗		✓
	✓		✗		✗		✓
	✓		✓		✗		✗
							✗

## Security Cards for MK Suites



Supplied with all new MK suites.

### Distributor

This security card is retained by the distributor and a copy of this card must be produced to Eurospec with any orders for additional keys or cylinders. The distributor card contains either the key number or master key system reference number.

### Owner

This security card is retained by the owner of the cylinder or master key system and must be produced to the distributor with any orders for additional keys or cylinders. The owner card contains either the key number or master key system reference number in addition to all distributor details.

For additional key codes and accessories please see P41-43





# MPx6+ BS KITEMARKED 6 PIN CYLINDERS 3 STAR RATED

## Cylinders

BS EN 1303 cylinder security - grade 2 (maximum grade)

TS 007:2014 + A1:2015 - 3 Star

Anti - snap

Anti - pick

Anti - bump

Anti - drill

Anti - twist

Anti - plug pull

Break - off system

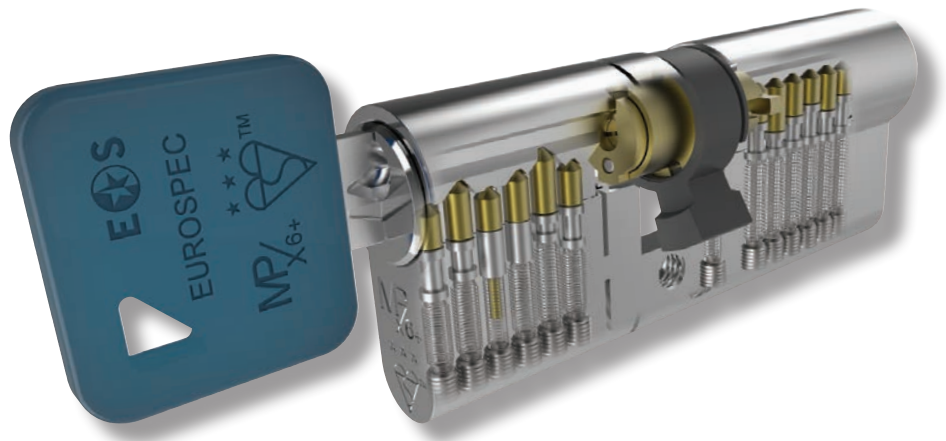
PB, PC or SC finish

Euro profile

Keyed to differ (KTD)

Keyed alike (KA)

Other cylinder sizes available to special order



## Keys

Plastic headed keys for ease of operation

Standard key section for ease of key duplication

Extended neck for use with security escutcheons

3 keys supplied with each cylinder

BS EN 1303 key security - grade 6 (maximum grade)



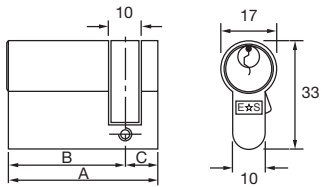


MP  
X6+



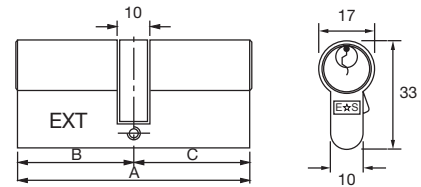
## Euro Single Cylinder

PB
  PC
  SC



## Euro Double Cylinder

PB
  PC
  SC



PLEASE NOTE: Dimension B is External Side

## KTD - Euro Single Cylinder

CYM71145 A: 48mm B: 35mm C: 13mm

## KTD - Euro Double Cylinder

CYM71270 A: 70mm B: 35mm C: 35mm  
 CYM71280 A: 80mm B: 40mm C: 40mm  
 CYM71290 A: 90mm B: 45mm C: 45mm  
 CYM712100 A: 100mm B: 50mm C: 50mm

## KTD - Offset Euro Double Cylinder

CYM7123540 A: 75mm B: 35mm C: 40mm  
 CYM7123545 A: 80mm B: 35mm C: 45mm  
 CYM7123550 A: 85mm B: 35mm C: 50mm  
 CYM7124035 A: 75mm B: 40mm C: 35mm  
 CYM7124050 A: 90mm B: 40mm C: 50mm  
 CYM7124060 A: 100mm B: 40mm C: 50mm  
 CYM7124535 A: 80mm B: 45mm C: 35mm  
 CYM7124550 A: 95mm B: 45mm C: 50mm  
 CYM7125035 A: 85mm B: 50mm C: 35mm  
 CYM7125040 A: 90mm B: 50mm C: 40mm  
 CYM7125045 A: 95mm B: 50mm C: 45mm  
 CYM7124555 A: 100mm B: 45mm C: 55mm  
 CYM7125545 A: 100mm B: 55mm C: 45mm  
 CYM7126040 A: 100mm B: 60mm C: 40mm

For keyed alike enquiries please contact the cylinder shop on 01254 274140

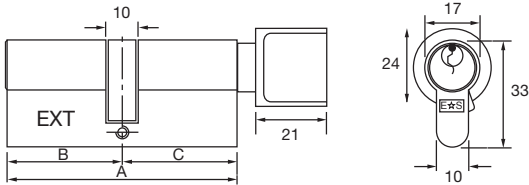
For keyed alike enquiries please contact the cylinder shop on 01254 274140

	✓		✓		✓		
	✓		✓		✓		✓
	✓		✓		✓		

	✓		✓		✓		
	✓		✓		✓		✓
	✓		✓		✓		

## Euro Cylinder & Turn

PB
  PC
  SC



PLEASE NOTE: Dimension B is External Side

### KTD - Euro Cylinder & Turn

- CYM71370 A: 70mm B: 35mm C: 35mm
- CYM71380 A: 80mm B: 40mm C: 40mm
- CYM71390 A: 90mm B: 45mm C: 45mm
- CYM713100 A: 100mm B: 50mm C: 50mm

### KTD - Offset Euro Cylinder & Turn

- CYM7133545 A: 80mm B: 35mm C: 45mm
- CYM7134535 A: 80mm B: 45mm C: 35mm

For keyed alike enquiries please contact the cylinder shop on 01254 274140

		✓		✓		✓	
	✓		✓		✓		✓
	✓		✓		✓		✓
				TS 007:2014 KM 597142	✓		✓

## Security Cards



Supplied with all new 3 Star Cylinders.

The security card is retained by the owner of the cylinder and produced to the distributor with any orders for additional keys or cylinders. The owner card contains the key number and should be kept in a safe place.

For additional key codes and accessories please see P41-43



# MP15 PATENTED 15 PIN CYLINDERS

## Cylinders

BS EN 1303 cylinder security grade 2\*

Anti - pick

Anti - bump

Anti - drill

Anti - pull

Anti - twist

14 standard pins and 1 special patented pin per cylinder plug

PB, PC or SC finish

Euro profile

Standard rim cylinder

Keyed to differ (KTD)

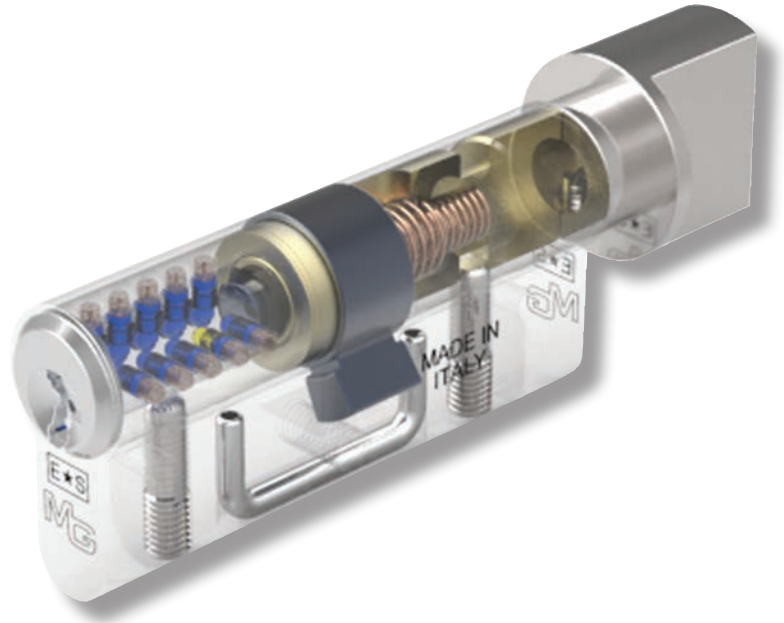
Keyed alike (KA)

Under master key (UMK)

Construction key capabilities (CK)

The construction key is used during installation, the user key is used to re-code the cylinder and automatically exclude the construction key

Other cylinder sizes available to special order



## Keys

Hard wearing nickel silver keys with plastic coated grip

Patent protection until 2022 against illegal key duplication

Huge master keying capabilities (systems up to 10,000 doors)

Extended neck for use with security escutcheons

28 key cuts on 3 different axis

2 special patented floating pins in each key

Vertical key entry for ease of operation

2 keys supplied with each cylinder

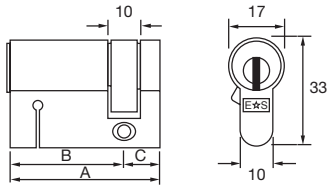
BS EN 1303 key security - grade 6 (maximum grade)



\* When used in conjunction with AEB5000 security escutcheon

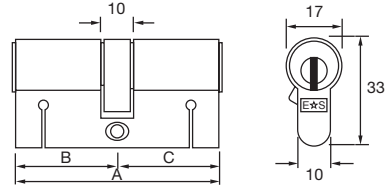
## Euro Single Cylinder

PB
  PC
  SC



## Euro Double Cylinder

PB
  PC
  SC



### KTD - Euro Single Cylinder

**KA**

**UMK**

CYP71141	A: 41mm B: 31mm C: 10mm	CYP74141	CYP77141
CYP71145	A: 45mm B: 35mm C: 10mm	CYP74145	CYP77145

### KTD - Euro Double Cylinder

**KA**

**UMK**

CYP71262	A: 62mm B: 31mm C: 31mm	CYP74262	CYP77262
CYP71270	A: 70mm B: 35mm C: 35mm	CYP74270	CYP77270
CYP71282	A: 82mm B: 41mm C: 41mm	CYP74282	CYP77282

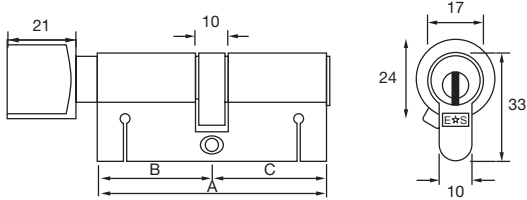
	✓		✓		✓		
	✓		✓		✗		✓
	✓		✓		✓		✗
							✓

	✓		✓		✓		
	✓		✓		✗		✓
	✓		✓		✓		✗
							✓



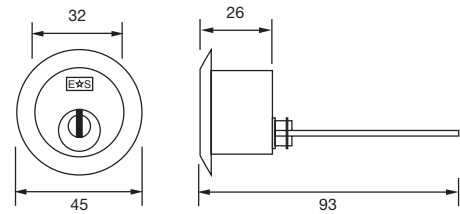
## Euro Cylinder & Turn

PB PC SC



## Standard Rim Cylinder

PB PC SC



### KTD - Euro Cylinder & Turn

KA

UMK

CYP71362 A: 62mm B: 31mm C: 31mm  
 CYP71370 A: 70mm B: 35mm C: 35mm  
 CYP71382 A: 82mm B: 41mm C: 41mm

CYP74362 CYP77362  
 CYP74370 CYP77370  
 CYP74382 CYP77382

### KTD - Standard Rim Cylinder

KA

UMK

CYP73526 Rim Cylinder

CYP76526 CYP79526

	✓		✓		✓		
	✓		✓		✗		✓
	✓		✓		✓		✗
5 YRS	✓	FD30/60	✓	BS EN 1303	✓	TS 007:2014 KM 585549	✗

	✓		✓		✓		
	✓		✗		✗		✓
	✓		✓		✓		✗
5 YRS	✓	FD30/60	✓	BS EN 1303	✓	TS 007:2014 KM 585549	✗

## Security Cards for all cylinders



Supplied with all new cylinders or MK suites.

### Distributor

This security card is retained by the distributor and a copy of this card must be produced to Eurospec with any orders for additional keys or cylinders. The distributor card contains either the key number or master key system reference number.

### Owner

This security card is retained by the owner of the cylinder or master key system and must be produced to the distributor with any orders for additional keys or cylinders. The owner card contains either the key number or master key system reference number in addition to all distributor details.

For additional key codes and accessories please see P41-43



## Keys

### 5 Pin Keys & Key Blanks

CYZ70000	Stocksuite master key
CYZ70001	5 Pin key blank
CYZ7000D	Additional cut key/differ key
CYZ7000M	Master/sub master key



### 6 Pin Keys & Key Blanks

CYZ78001NS	6 Pin key blank
CYZ7800DNS	Additional differ key
CYZ7800MNS	Master/sub master key



### 10 Pin Keys & Key Blanks

CYZ75000NS	Stocksuite master key
CYZ7500CNS	Construction key
CYZ7500DNS	Differ key
CYZ500MNS	Workshop cut master/sub master key



### 6+ Pin Keys & Key Blanks

CYZ79001BL	MPx6+ cylinder key blank (blue head)
CYZ7900DBL	MPx6+ workshop cut cylinder key (blue head)



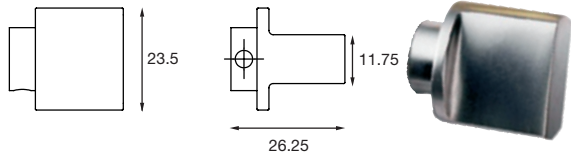
### 15 Pin Keys & Key Blanks - Colour Coded Heads

CYZ72001B	Master/sub master key (blue)
CYZ72001BK	Differ key (black)
CYZ72001R	Construction key (red)
CYZ72001G	Grand master key (green)



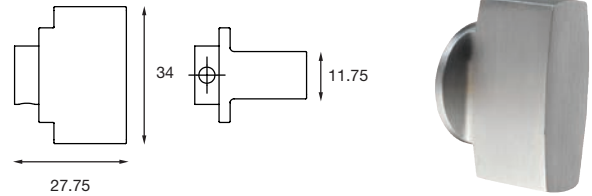
**Alternative Thumbturns**

**Standard Thumbturn**



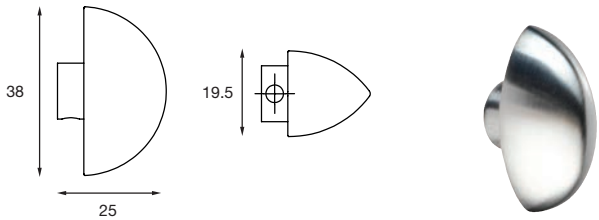
CYZ70006

**Large Thumbturn**



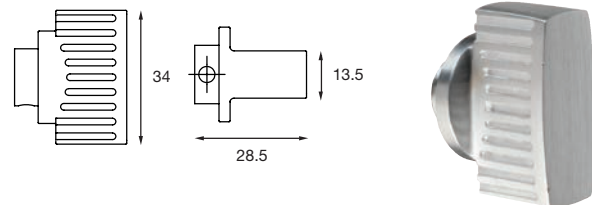
CYZ70007

**Round Thumbturn**



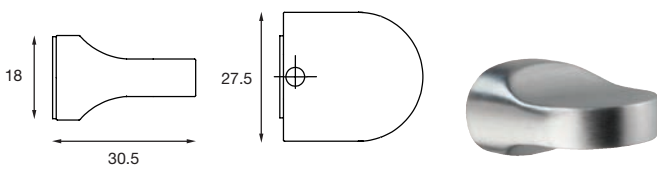
CYZ70008

**Large Thumbturn with Grip**



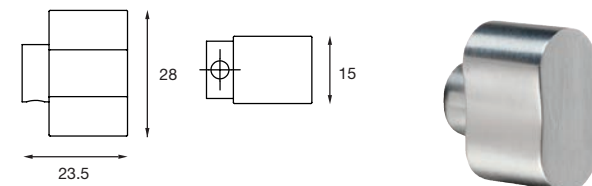
CYZ70009

**Tall Semi-Circular Thumbturn**



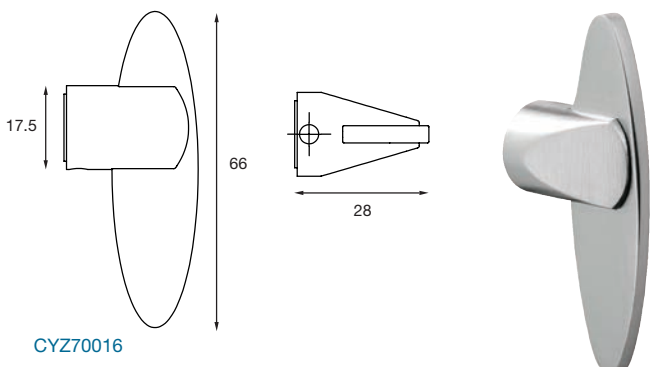
CYZ70011

**Peanut Shaped Thumbturn**



CYZ70012

**Shaped Disabled Thumbturn**











CYZ70016

**Thumbturn Finishes**



## Accessories

Cylinder Rings	Key Rings
 <p>CYZ73607 Cylinder ring for threaded cylinder 7mm                      CYZ73610 Cylinder ring for threaded cylinder 10mm</p>	 <p>CYZ70002 19mm Key ring</p>
Key Tags	Screws for Profile Cylinders
 <p>CYZ70003 Key tag</p>	 <p>CYZ70004NP M5 x 65mm Fixing screw for profile cylinders (nickel plate)                      CYZ70004EB M5 x 65mm Fixing screw for profile cylinders (electro brass)</p>
Screws for Rim Cylinders	Tail for 5 Pin Rim Cylinders
 <p>CYZ70040 Fixing screw for rim cylinders</p>	 <p>CYZ70060 Tail for 5/6 Pin rim cylinder</p>
Tail for 10 Pin Rim Cylinders	Steel Backplate
 <p>CYZ75060 Tail for 10 Pin rim cylinder</p>	 <p>CYZ70050 Steel backplate for standard rim cylinder</p>

## Care & Maintenance Procedures for Eurospec Cylinders & Padlocks

The following guidelines provide our recommendations for your Cylinder and Padlock maintenance program. It is important that maintenance be done on a regular basis. It is recommended that inspections and cleaning be done routinely – at least twice annually. However, a more regular program should be introduced for harsh or marine environments.

### Cylinders

- Do not use oil or similar lubricants. Use only GT85 type lubricant.
- Do not clean cylinders with any type of Chemical wash.
- Do not paint or varnish any part of the keyway plug.
- Do not over lubricate cylinders.
- Ensure the cylinder operates correctly and check any turns are fixed to the cylinder tightly. Tighten the small thumb turn screw if needed.
- If you suspect excessive dirt has entered the keyway, thoroughly flush with GT85 lubricant to disperse the dirt. When dry, re-lubricate with a small amount of GT85. This will leave a long lasting and protective film on the internal moving parts.

### Preventative Measures

- Never use the Key to pull the door open or pull it shut.
- Never force the key when operating the deadbolt or latch.
- Never use pliers or similar to turn the key.

### Padlocks

- Treat the cylinder plug as above and lubricate the shackle area with grease.

### Keys

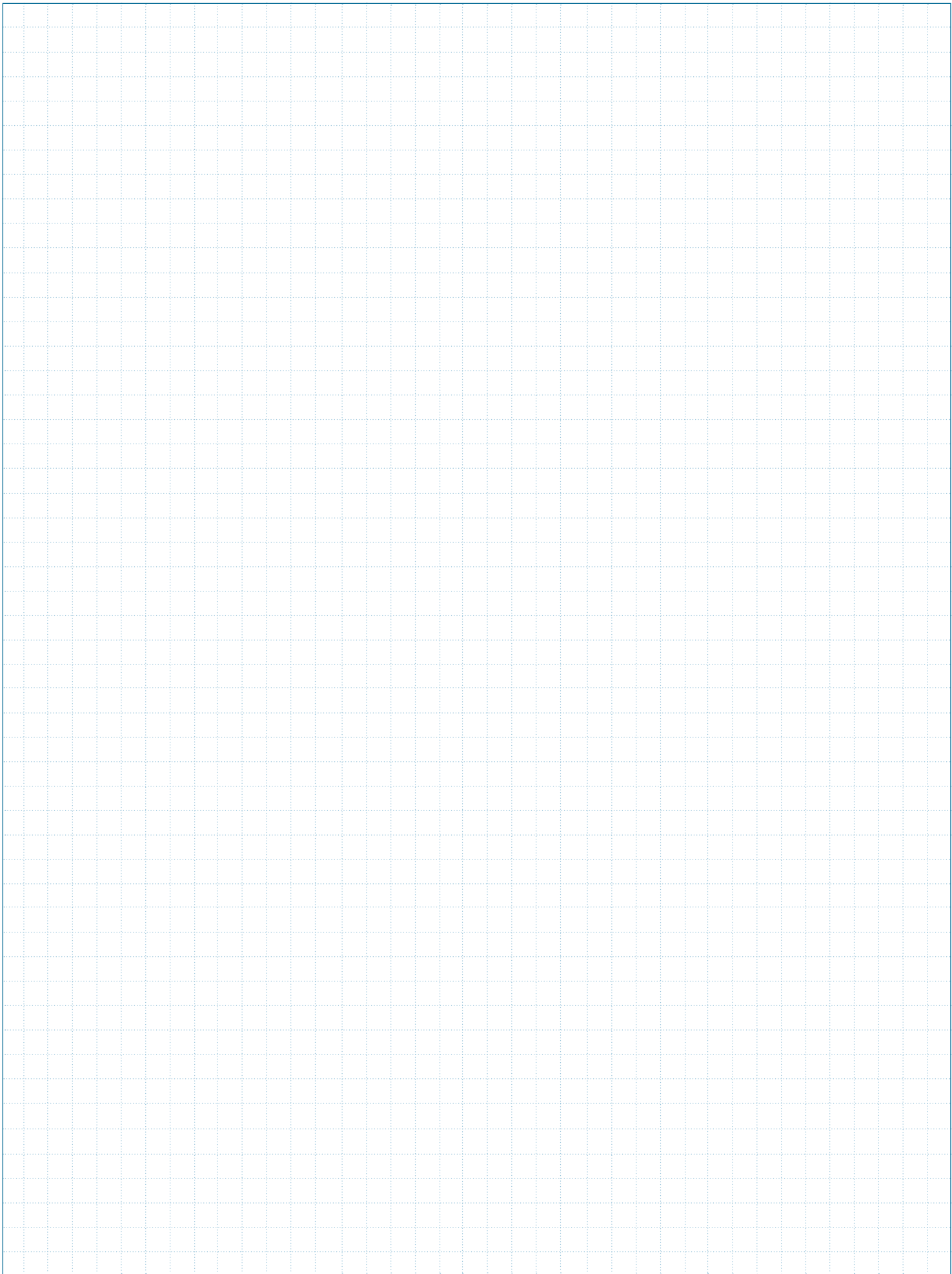
Where possible, always use genuine Eurospec keys when cutting replacements for Open section keyways. During the twice yearly maintenance programme, inspect all keys in use and replace any that show signs of physical wear.

Carlisle Brass will guarantee any Eurospec Cylinder or Padlock against any manufacturing defect for 5 years.

## Troubleshooting

In the unlikely event the cylinder does not operate properly, please follow this simple check list:

1. Does the lock work okay with the door open?  
 Yes - Check striker plate alignment and adjust as required.  
 No - Check a different key.
2. Does the lock now work okay?  
 Yes - Replace faulty key.  
 No - Remove cylinder from door.
3. Does the cylinder work okay out of the door?  
 Yes - Check lock case operation and replace if required. Check alignment of handles and escutcheon and adjust if necessary.  
 No - Contact Eurospec cylinder shop for further instructions.





Eurospec Cylinder Shop

Phone: 01254 274140 Fax: 01254 274113 Email: [workshop@carlislebrass.com](mailto:workshop@carlislebrass.com)



Carlisle Brass Ltd. Parkhouse Road, Carlisle, Cumbria, CA3 0JU

Sales: 01228 511030 Email: [sales@carlislebrass.com](mailto:sales@carlislebrass.com) Web: [www.carlislebrass.com](http://www.carlislebrass.com)