



# EUROSPEC

ADJUSTABLE 3D CONCEALED HINGES FOR DOORS







# Introduction

Eurospec is a brand of Carlisle Brass used for commercially orientated hardware.

Products are designed to provide beautifully engineered door hardware for the specification market.

This concealed hinge range will provide a cost effective solution that can be used both commercially or for residential projects.

Eurospec brand products include:

- High specification hinges
- Door control mechanisms
- Panic hardware
- Cylinder locks
- Mortice locks and latches

Carlisle Brass Ltd. is an ISO 9001 and ISO 14001 certified company, which means that Eurospec branded products are fully traceable from point of manufacture to customer and that the environmental impact is being constantly measured and improved.

Accredited products carrying the Eurospec brand are stringently tested to ensure they comply to the latest regulations, which makes Eurospec branded products the ideal choice for the professional installer, architect or specifier.



Certificate Number: 7287



Certificate Number: EN 1165



INDUSTRY PARTNER



## Contents

1129 Hinges suitable for doors from 28mm thick .....	Page 8
1130 Hinges suitable for doors from 30mm thick .....	9
1131 Hinges suitable for doors from 38mm thick .....	10
1230 Hinges suitable for doors from 35mm thick .....	11
1080 Hinges suitable for glass doors 8 and 10mm thick .....	12
Concealed hinge selector chart and Accessories .....	14
Care and maintenance of concealed hinges .....	14





# Adjustable 3D concealed hinges for doors

Eurospec is working with European manufacturer Ceam to provide UK distribution of industry leading concealed door hinge solutions.

## A range of adjustable concealed hinges

- Fire rated
- Fully reversible
- Shallow mortice
- Removable knuckle
- Maintenance free
- No visible fixings
- 100% European made
- UK stocked for next day delivery
- Intumescent kits available to suit
- Routing jigs and templates available for ease of installation

Available in a variety of finishes:



**ARG** - Silver



**NIK** - Nickel plated



**VCH** - SS plated



**BRO** - Bronze plated



**NNE** - Matt nickel



**VNO** - Matt black



**BRS** - Antique satin bronze



**OTT** - Brass plated

## Key to symbols



Suitable for use in commercial environments.



Suitable for use in residential environments.



10 Year Mechanical Guarantee.



The UK Construction Products Regulations require that door hardware for use on fire doors be safe and durable

## CEAM 3D CONCEALED HINGE 1129

### Product Codes

**CI001129BR000**

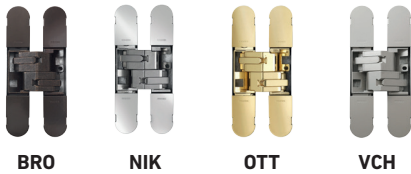
**CI001129NIK00**

**CI001129OTT00**

**CI001129VCH00**

A concealed medium duty hinge for unrebeated, flush faced quality timber doors. Has removable cover plates to conceal the adjustment screws. Comes with a 10 year mechanical guarantee.

### Available finishes



**BRO**

**NIK**

**OTT**

**VCH**

Suitable for doors from 28mm thick

Suitable to doors of 25kg load (2 hinges)

Suitable to doors of 40kg load (3 hinges)

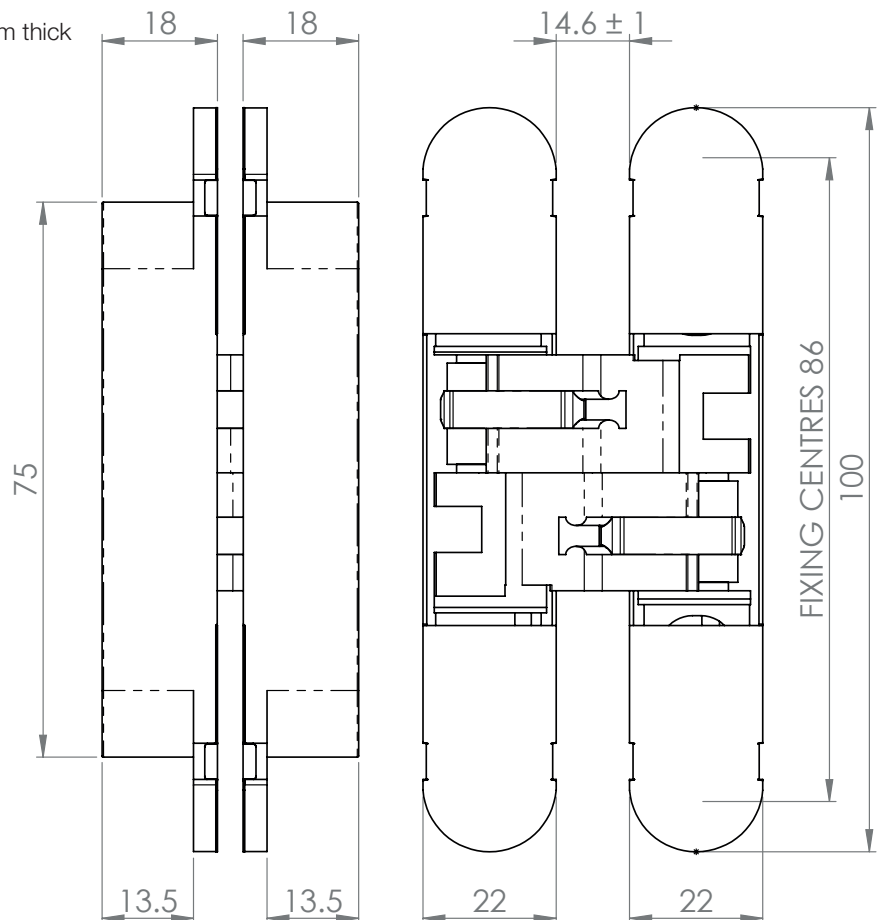
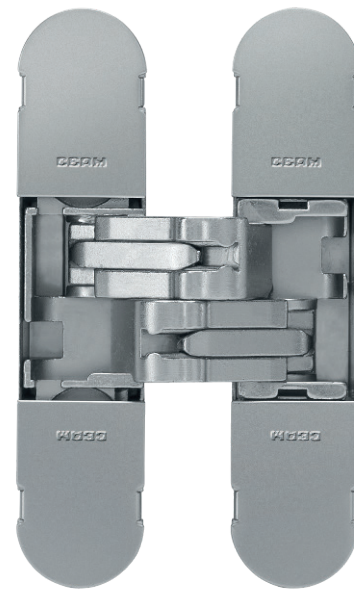
Maximum width up to 850mm

Depth 18mm

Reversible on doors from 28mm to 31mm thick

Fit no more than 4.5mm from door and frame edge

Non-fire rated





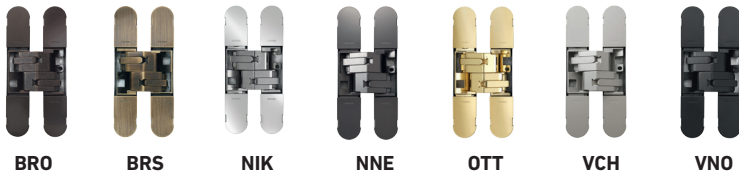
## CEAM 3D CONCEALED HINGE 1130

### Product Codes

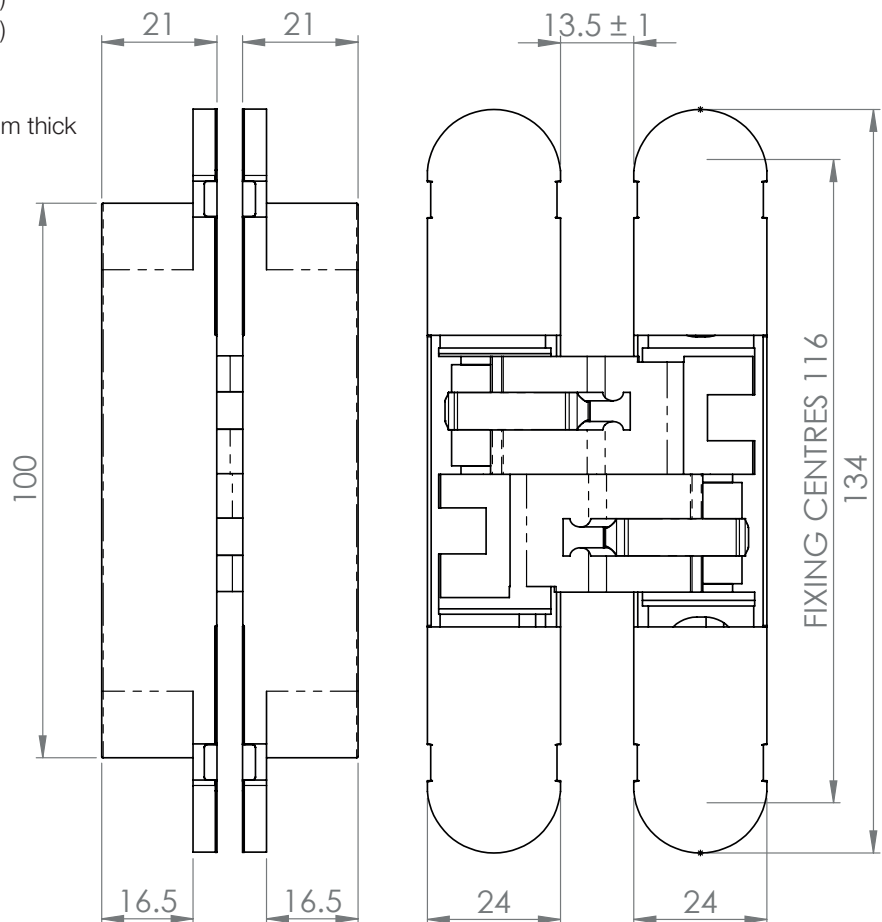
- CI001130BRO00**
- CI001130BRS00**
- CI001130NIK00**
- CI001130NNE00**
- CI001130OTT00**
- CI001130VCH00**
- CI001130VNO00**

A concealed medium duty hinge for unrebeated, flush faced quality timber doors. Has removable cover plates to conceal the adjustment screws. Comes with a 10 year mechanical guarantee.

### Available finishes



- Suitable for doors from 30mm thick
- Suitable to doors of 40kg load (2 hinges)
- Suitable to doors of 60kg load (3 hinges)
- Maximum width up to 1000mm
- Depth 21mm
- Reversible on doors from 30mm to 33mm thick
- Fit no more than 4.5mm from door and frame edge
- Fire rated FD30 timber
- Fire kit ref ES1130



## CEAM 3D CONCEALED HINGE 1131

### Product Codes

**CI001131BR000**

**CI001131BRS00**

**CI001131NIK00**

**CI001131NNE00**

**CI001131OTT00**

**CI001131VCH00**

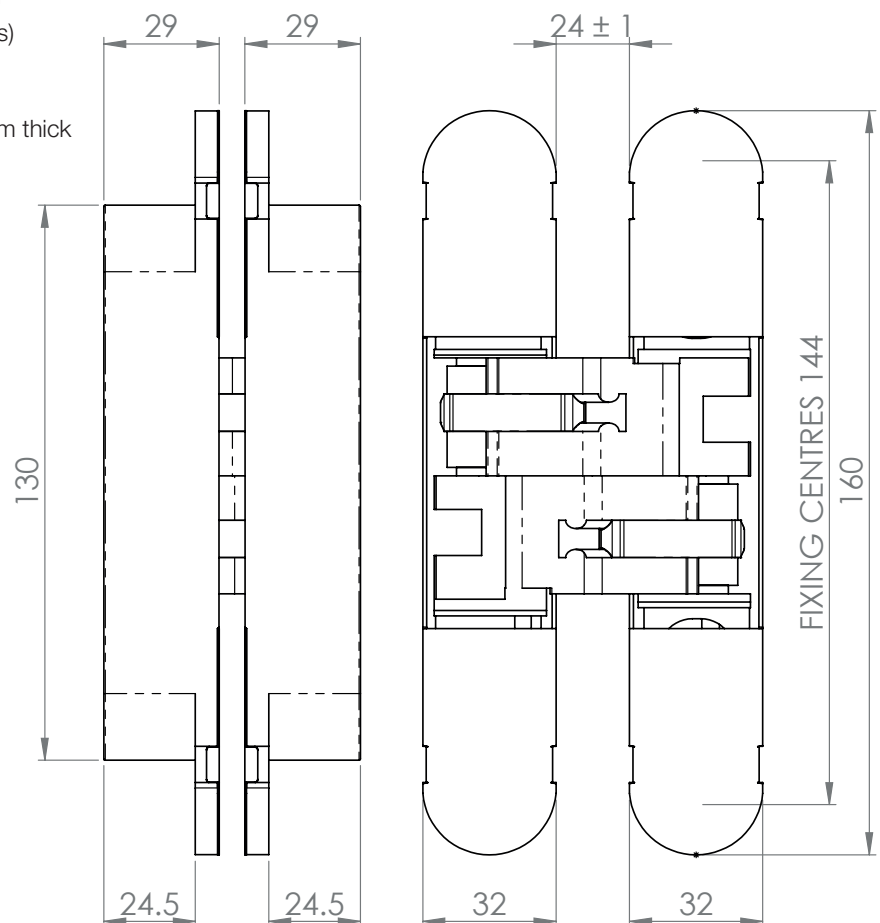
**CI001131VNO00**

A concealed heavy duty hinge for unrebeated, flush faced quality timber doors. Has removable cover plates to conceal the adjustment screws. Comes with a 10 year mechanical guarantee.

### Available finishes



- Suitable for doors from 38mm thick
- Suitable to doors of 80kg load (2 hinges)
- Suitable to doors of 120kg load (3 hinges)
- Maximum width up to 1000mm
- Depth 29mm
- Reversible on doors from 38mm to 46mm thick
- Fit no more than 7mm from door and frame edge
- Fire rated FD30/60 and E120\* timber
- Fire kit ref ES1131 (not E120)





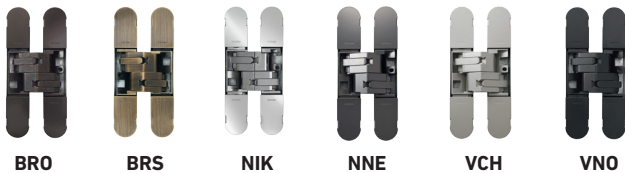
## CEAM 3D CONCEALED HINGE 1230

### Product Codes

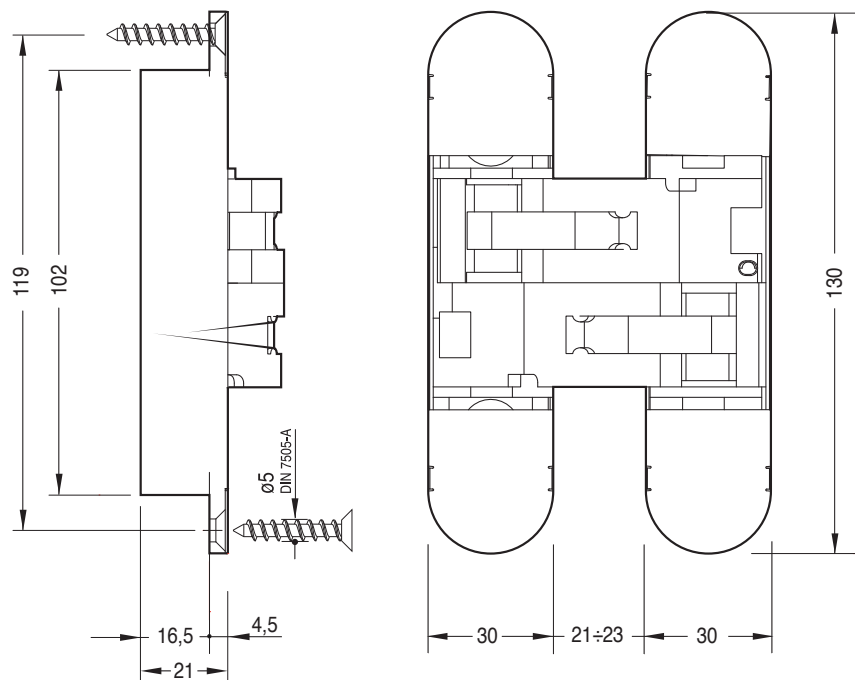
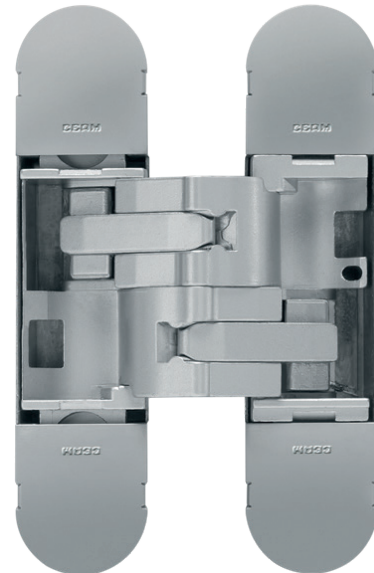
- CI001230BRO00**
- CI001230BRS00**
- CI001230NIK00**
- CI001230NNE00**
- CI001230VCH00**
- CI001230VNO00**

A concealed heavy duty hinge for unrebeated, flush faced quality timber doors. Has removable cover plates to conceal the adjustment screws. Comes with a 10 year mechanical guarantee.

### Available finishes



- Suitable for doors from 35mm thick
- Suitable to doors of 50kg load (2 hinges)
- Suitable to doors of 70kg load (3 hinges)
- Maximum width up to 1000mm
- Depth 21mm
- Reversible on doors from 35mm to 45mm thick
- Fit no more than 7.5mm from door and frame edge
- Fire rated FD30 timber
- Fire kit ref ES1230

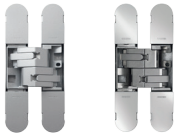


## CEAM CONCEALED HINGES 1080 FOR GLASS DOORS

**Product Codes**  
**CI001080NARGVT**  
**CI001080NIKVT**

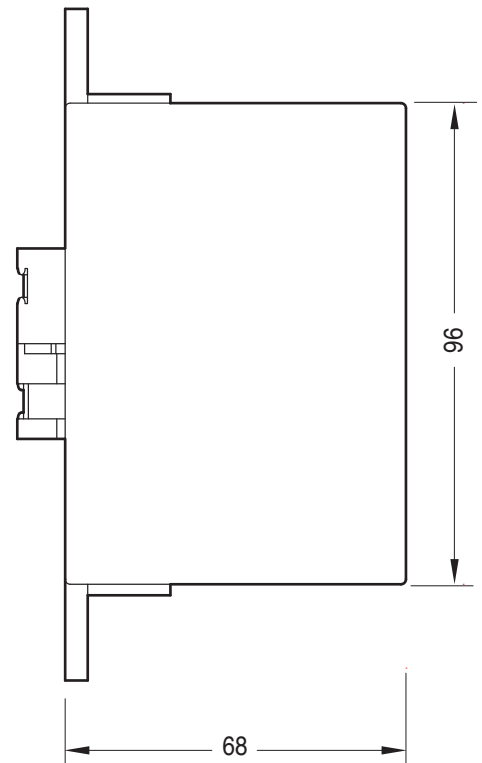
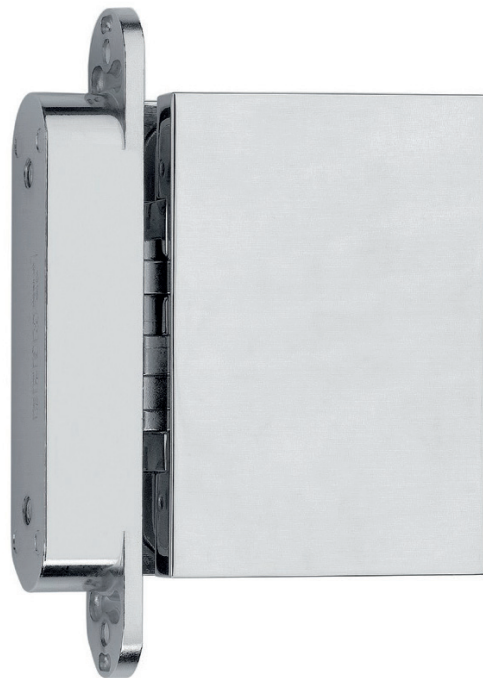
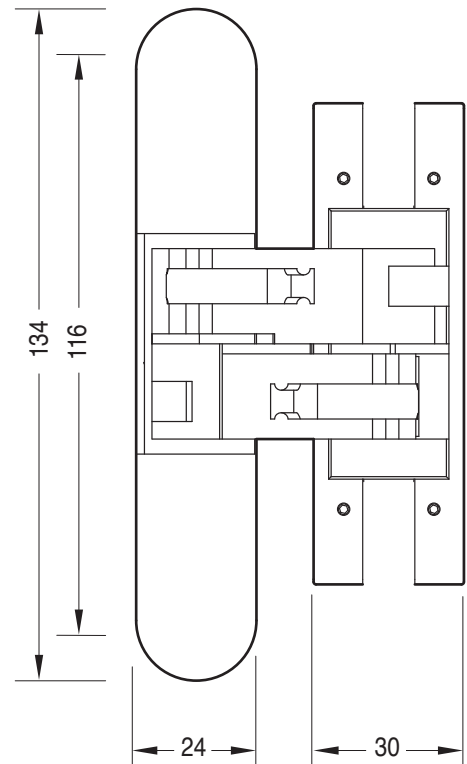
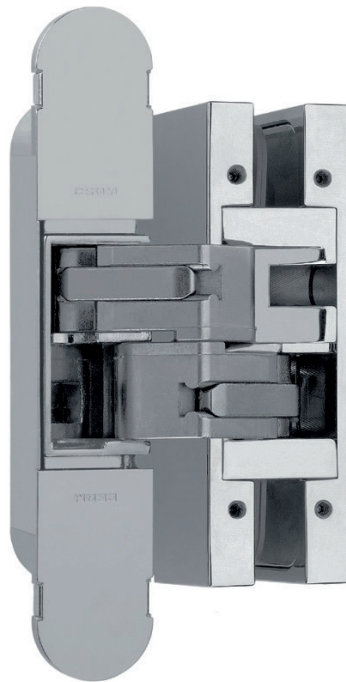
- Suitable for door jamb of minimum 30mm thick
- Suitable for 8 and 10mm glass
- Suitable to doors of 40kg load (2 hinges)
- Suitable to doors of 60kg load (3 hinges)
- Maximum width up to 850mm
- Total length 134mm
- Depth 21mm
- 2D (vertical and depth) adjusting system
- Non-fire rated

### Available finishes



ARG

NIK







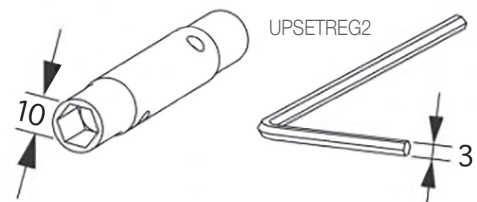
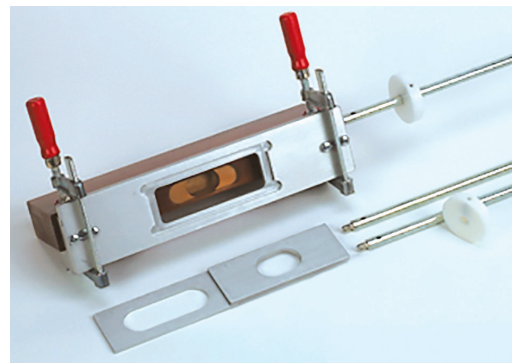
## Concealed hinge selector chart

Code	Description	Dimensions	No of UK stock finishes	Inner box qty	Mortice depth	Min. door width	Max. distance from leading	Range of reversibility when fitted in centre of door	Load capacity 2 hinges	Load capacity 3 hinges	Suitable for fire doors
1129	Ceam 3D concealed hinge	100x22x18mm	4	9	18mm	28mm	4.5mm	28-31mm	25kg	40kg	N
1130	Ceam 3D concealed hinge	130x24x21mm	7	9	21mm	30mm	4.5mm	30-33mm	40kg	60kg	Y
1131	Ceam 3D concealed hinge	160x32x29mm	7	3	29mm	38mm	7mm	38-46mm	80kg	120kg	Y
1230	Ceam 3D concealed hinge	130x30x21mm	6	6	21mm	35mm	7.5mm	35-45mm	50kg	70kg	Y
1080	2D concealed hinge for glass doors/timber frame	134x24x21mm	2	4	21mm	Frame 30mm	4.5mm	30-33mm	40kg	60kg	N

## Available accessories

Code	Name	Inner box qty
DIMECON2ART1130	1129 and 1130 3D concealed hinge fitting jig	1 set
DIMECON2ART1131	1131 - 1230 3D concealed hinge fitting jig	1 set
CIOFRESA00000	1131 - 1230 3D concealed hinge fitting jig	1 set
CIOODIMA01131	Insert set for 3D concealed hinge fitting jig to fit 1131 hinges	1 pair
CIOODIMA01230	Insert set for 3D concealed hinge fitting jig to fit 1230 hinges	1 pair
CIOODIMA01130	Insert set for 3D concealed hinge fitting jig to fit 1130 hinges 1080	1 pair
CIOODIMA01129	Insert set for 3D concealed hinge fitting jig to fit 1129 hinges	1 pair
UPSETREG1	Tool set for hinge adjustment 1129-1130-1080	1 set
UPSETREG2	Tool set for hinge adjustment 1230-1131	1 set

Concealed hinge fitting jig



## Care and maintenance of concealed hinges

Concealed hinges are maintenance free, provided they are correctly installed as per recommended tolerances and fitting guidelines. It is advisable to lubricate the hinges once every two years, or more, depending on the frequency of opening and adjust as necessary.

These concealed hinges are suitable for interior installations. For exterior fitting please contact sales office for information on SS G304 hinge (1080 Inox).

These concealed Hinges are not to be used with Door Closers other than: Eurospec DCC2003CF and DCC2024CF Concealed Closers and DCC2003SM and DCC2024SM Cam action Surface Mounted Closers.





☎ 01228 511 030  
📞 01228 511 885  
✉ Parkhouse Road, Carlisle, CA3 0JU  
@ enquiries@carlislebrass.com  
🌐 www.carlislebrass.com

