

A150X

SEMICONDUCTOR PROTECTION FUSES



A150X Amp-trap® Form 101 Semiconductor Protection fuses, rated up to 1000A, 1500VAC are suitable for Traction drive and auxiliary circuits and for High Voltage Heavy duty rectifier applications. A150X fuses are suitable for use up to 1500VDC on circuits depending on time constant.

Features/Benefits

- **1500 Volt AC rated** for wide range of applications
- **Heavy Duty Links**
- **Rugged Fiberglass Body**

Ratings

- **AC:** 1A to 1000A
1500VAC, 100kA I.R.
- **DC:** 1A to 1000
1000VDC, 100kA I.R.
L/R = 100ms

Approvals

- Ferraz Shawmut Certified

HIGHLIGHTS:

- Fast Acting
- Current Limiting
- Low I²t

APPLICATIONS:

- Protection of traction drive and auxiliary circuits, etc.

Standard Fuse Ampere Ratings Catalog Numbers

AMPERE RATING	CATALOG NUMBER	OUTLINE FIG.	AMPERE RATING	CATALOG NUMBER	OUTLINE FIG.
1	A150X1-1	1	90	A150X90-4	2
15	A150X15-1	1	100	A150X100-4	2
15	A150X15-4	2	125	A150X125-4	2
20	A150X20-1	1	150	A150X150-4	2
20	A150X20-4	2	175	A150X175-4	2
25	A150X25-4	2	200	A150X200-4	2
30	A150X30-1	1	250	A150X250-4	2
30	A150X30-4	2	300	A150X300-4	2
35	A150X35-4	2	400	A150X400-4	2
40	A150X40-4	2	450	A150X450-4	2
50	A150X50-4	2	500	A150X500-4	2
60	A150X60-4	2	600	A150X600-4	2
70	A150X70-4	2	800	A150X800-4	2
80	A150X80-4	2	1000	A150X1000-4	2

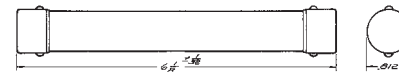


Figure 1

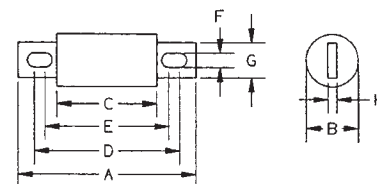


Figure 2

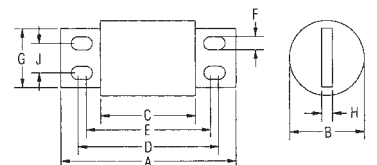


Figure 3

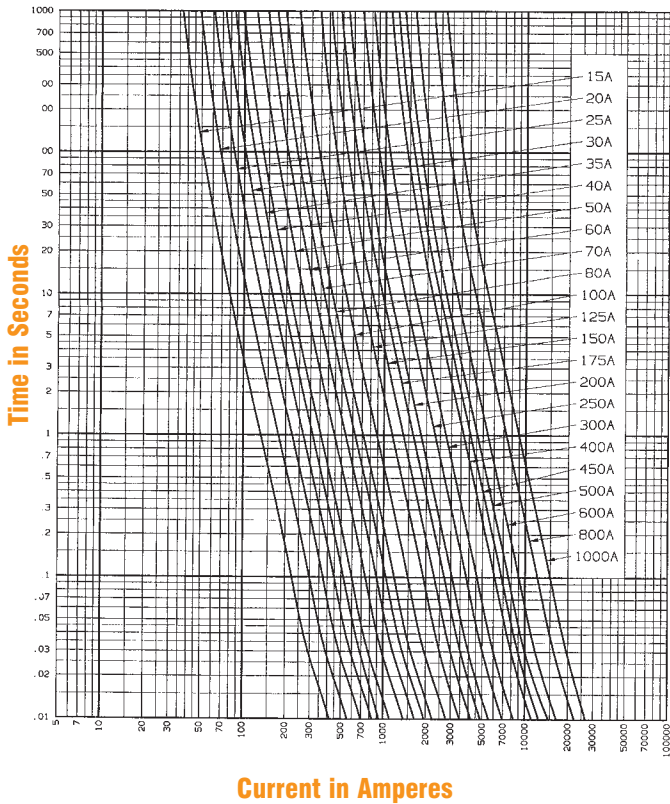
Dimensions

OUTLINE REF.	MOUNTING TYPE	FIG.	DIMENSIONS - INCHES (mm)												
			A	B	C	D	E	F	G	H	J				
A150X1 to 30	1	1													
A150X15 to 60	4	2	7.15 (182)	1.21 (31)	5.62 (143)	6.46 (164)	6.34 (161)	0.31 (8)	1.00 (25)	0.18 (3)	-	-	-	-	-
A150X70 to 100	4	2	7.87 (127)	1.50 (31)	5.62 (173)	6.93 (176)	6.31 (160)	0.40 (10)	1.00 (25)	0.025 (6)	-	-	-	-	-
A150X125 to 300	4	2	7.87 (145)	2.00 (38)	5.62 (88)	6.93 (176)	6.31 (160)	0.40 (10)	1.50 (38)	0.25 (6)	-	-	-	-	-
A150X400 to 600	4	2	9.75 (145)	2.50 (51)	6.62 (88)	8.31 (211)	8.06 (205)	0.56 (14)	2.00 (51)	0.25 (6)	-	-	-	-	-
A150X800 to 1000	4	3	9.87 (251)	3.50 (89)	6.12 (155)	8.03 (204)	7.71 (196)	0.56 (14)	2.75 (70)	0.37 (9)	1.37 (35)	-	-	-	-

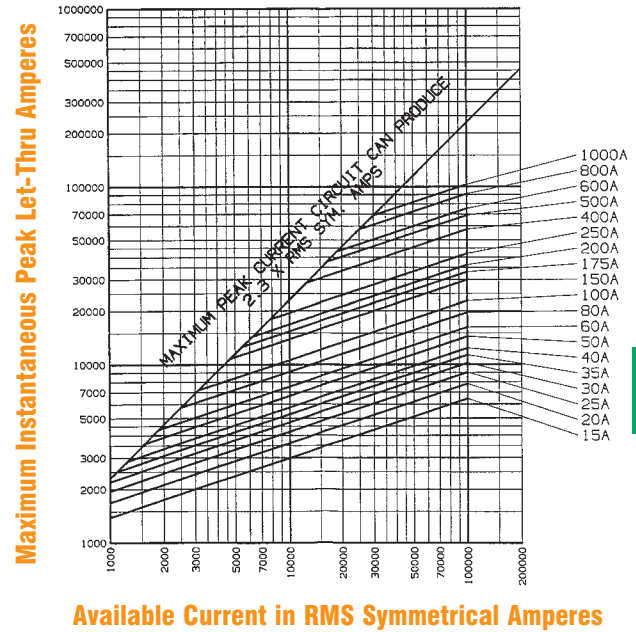
A150X

SEMICONDUCTOR PROTECTION FUSES

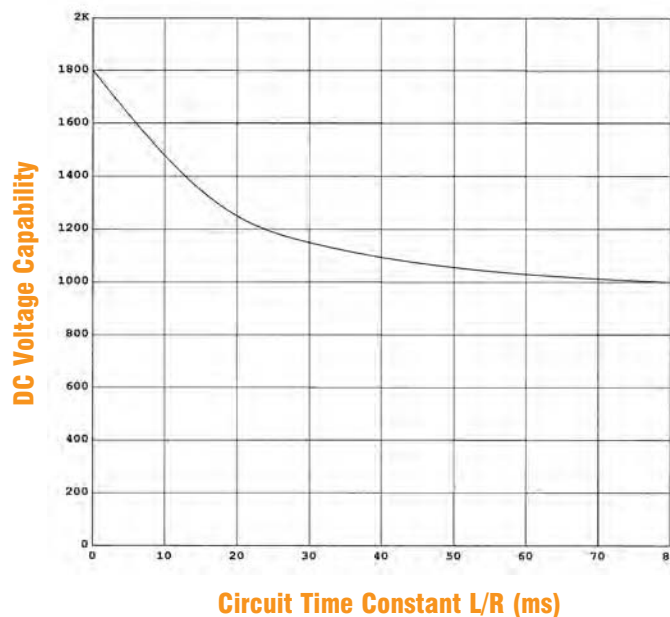
Melting Time – Current Data, 1500V Fuses



Peak Let-Through Data – A150X15 to 1000, 1500 VAC



DC VOLTAGE CAPACITY VS. TIME CONSTANT



I²t DATA - 1500 VAC, 100kA

AMPERE RATING	PRE-ARC I²t (A²s x 10³)	TOTAL I²t DATA AT 1500VAC (A²s x 10³)
15	1.4	2.94
20	2.5	5.25
25	3.8	8.04
30	5.5	11.6
35	7.5	15.8
40	9.8	20.6
50	15.3	32.1
60	22	46.2
70	31	62
80	40	80
90	50	100
100	61	128
125	100	215
150	138	290
175	188	395
200	245	515
250	383	804
300	551	1157
400	980	2057
450	1240	2603
500	1530	3213
600	2204	4629
800	3918	8829
1000	6122	12860