

Chemical Content Analysis

Date: 14-06-2019

Client: BeYou Together Ltd

Product: BeYou Full Spectrum Oral Spray
Lemon 300mg

Volume: 30 mL

Batch No: TH020519ML

Lab ID: CBD0228

Visual Inspection:

Clear liquid

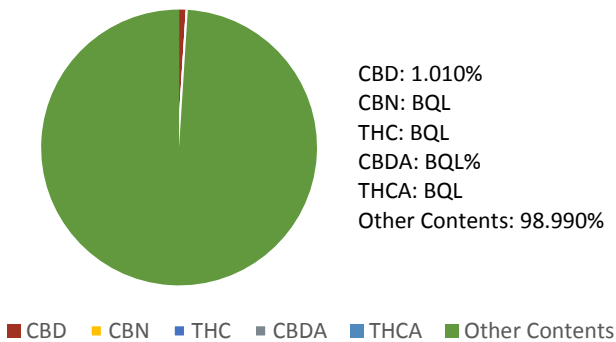
Method Summary:

1ml of sample was measured in a pipette and extracted in Isopropyl Alcohol to provide a sample at 0.4mg/ml. This was then diluted further in Methanol. CBD content was analysed on an Agilent HPLC fitted with a DAD detector. Content on HPLC was analysed against a standard calibration of CBD, CBN and THC, supplied by Restek, as well as CBDA and THCA supplied by Sigma-Aldrich. The results are presented in Table 1 and Figure 1 below.

| Compound | CAS Number | Concentration (mg/ml) | LoQ (µg/ml) |
|-------------------------------------|------------|-----------------------|-------------|
| Cannabidiol | 13956-291 | 9.54 | 0.1 |
| Cannabinol | 521-35-7 | BQL | 0.1 |
| Delta-9- Tetrahydrocannabinol | 1972-08-3 | BQL | 0.1 |
| Cannabidiolic Acid | 1244-58-2 | BQL | 0.1 |
| Delta-9-Tetrahydrocannabinolic Acid | 23978-85-0 | BQL | 0.2 |

BQL, Below Quantitation Limit.

% Content of Sample



Comments:

300mg of CBD in 30ml is equivalent to 10mg/ml

Acceptance Criteria: $\pm 5\%$ of target concentration CBD total, including CBDA, below legal limit of CBN, THC and THCA.

CBD- Cannabidiol

CBDA- Cannabidiolic Acid

CBN- Cannabinol. The legal limit for this compound is 1mg per container.

THC- delta-9-Tetrahydrocannabinol.

THCA- delta-9-Tetrahydrocannabinolic Acid. The legal limit for both THC and THCA this compound is 1mg per container

The sample passes all acceptance criteria for CBD, CBN and THC.

Figure 1. Pie chart of the analysis result.

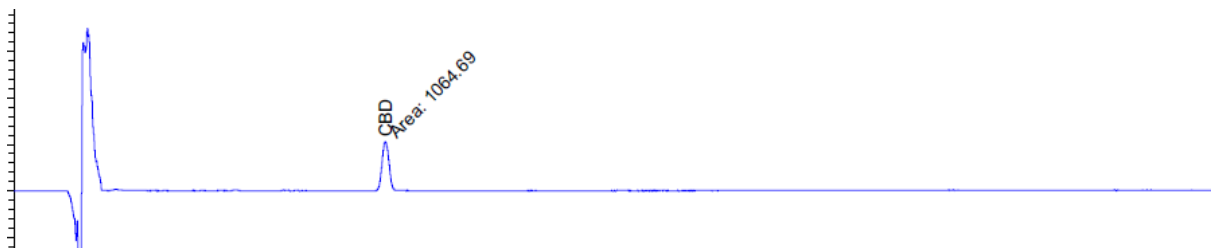


Figure 2. Chromatogram of the analysis

Analysis By:
Lawrence Theobald

Approved By:

Mark Portsmouth, Analytical Chemistry Consultant

DATE: 14-06-19