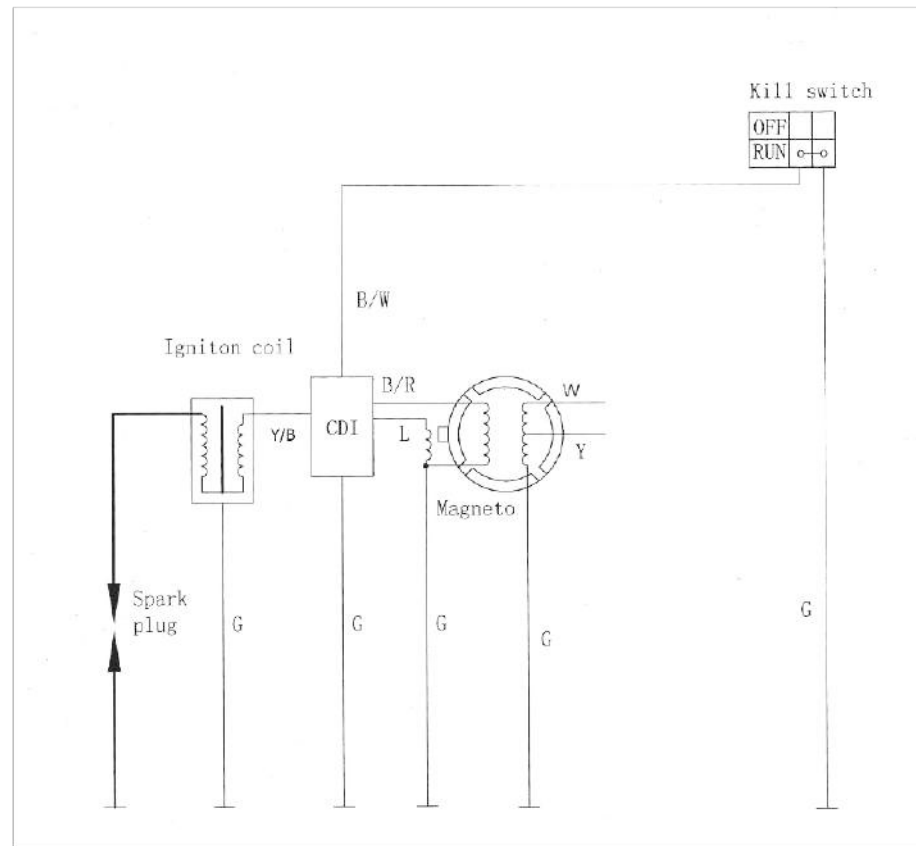


ELECTRIC DIAGRAM



P41

FOREWORD

Thank you very much optional selection of this OFF ROAD MOTOBIKE.

The sport utility vehicle is based on market demand, production of a comprehensive survey. We hope that it will bring you driving pleasure.

Please read Dian Aberdeen before driving the manual, because it will help you understand the sport utility vehicle which the structure, operation and maintenance of basic knowledge, while you keep off-road vehicles are in good condition and safe driving will be very useful.

The non-road vehicle use, and never in the streets, sidewalks and motor vehicles driving along.

Drivers must be over 16 years of age, driving the need for skilled personnel and adequate comprehension, intelligence and judgment to safely control driving. And accompanied by a guardian.

It will bring unparalleled freedom feelings. In order to achieve the best performance, the vehicle must always reach the correct maintenance. As driver, you should be recognized for your good health, so that you do not fatigue in the best condition you were under control. Medication, drugs, drink, unable to ride, especially alcohol, this will increase the possibility of personal distress.

Liquor very dangerous, even a small amount.

Travel must be good quality bull wearing safety helmets, gloves, put on their boots and put on their long colorful protective clothing. (Both to protect themselves, but also aroused the attention of others)

When traveling to other vehicles and pedestrians who maintain a certain distance.

P2

GUIDELINES ON SAFE DRIVING

1, when approaching corners or bends to reduce speed. Upon the completion of turn, may gradually increase the speed.

2, when crossing the vehicles parked in front of, to be very careful. Because the driver of the vehicle may be invisible to you and the door opened, the forward block in your way.

3, Brake Lining may Motorcycle rinsing wetting lose their role, so when cleaning End after walking ago, should check all brake system.

If you have any questions regarding your warranty rights and responsibilities, you should contact the Maxtade Warranty Department at 1-626-228-0251

P3

SPECIFICATIONS

1. The main specs of size
 - 1.1 Model dimensions1530X750X1040 (L*W*H)
 - 1.2 Wheel base.....1055mm
 - 1.3 seat height.....780mm
 - 1.4 ground clearance.....300mm
 - 1.5 slipper angle.....24°
 - 1.6 steering angle.....left\ right140° ± 2°
2. the main quality specs
 - 2.1 gross weight.....70kg
 - 2.2 dry weight.....59kg
3. engine specs
 - 3.1 engine no.....1P52FMH(110cc)/1P52FM(120cc)
 - 3.2 engine type.....4-stroke, single cylinder
 - 3.3 BorexStroke.....52.4x49.5(110cc) 52.4x57(120cc)
 - 3.4 cylinder work vol.....110CC/120cc
 - 3.5 compression ratio.....9:1
 - 3.6 max power.....5.7/7500±500Kw/r/min(120cc) 4.72/7500±500Kw/r/min(110cc) 8.0/5500±500N•m/r/min(120cc) 7.82/5500±500N.m/r/min(110cc)
- 3.7 max torque.....1500±150r/min
- 3.8 the mini speed unlade stability.....>90#
- 3.9 gas type.....SF 15W/40
- 3.10 lubricant type.....900ml
- 3.11 crankcase lubricants capacity.....pressure spatter
- 3.12 lubrication system.....kick
- 3.13 starting system.....CDI
- 3.14 ignition.....Auto clutch
- 3.15 clutch type.....chain
- 3.16 transmission.....PZ22
- 3.17 carburetor no.....Plunger
- 3.18 carburetor type.....D7TC
- 3.19 spark plug no.....0.6-0.7
- 3.20 spark plug space.....3.5L
4. operating system
 - 4.1 shock absorber type.....hydraulic spring
 - a) shock absorber front.....hydraulic spring
 - b) shock absorber rear.....hydraulic spring
 - 4.2 tire specs pressure
 - a) tires front.....2.75-14 pressure =32 Psi
 - b) tires rear.....3.0-12 pressure =32 Psi
5. brakes system
 - Brakes front.....Hydraulic disc/foot manipulating patterns
 - Brakes rear.....Hydraulic disc/hand manipulating patterns
6. Electrical Equipment
 - 6.1 generator.....non-contact outside the rotor flywheel

P40

Bike is shaking heavy	1.spring of suspension break off	renew
	2.suspension bend	renew
	3.suspention leaking	renew
	4.bearing of wheel broke	renew
Running direction is unstability	1. parts of director handle it tight or loose	Check them
	2.fire press is not enough	Check them
	3.frame, suspension install is improper	Install again and adjust
	4. axes is easy to move	adjust
Brake couldn't work	1.shoes of rear brake wear and tear heavy	renew
	2.brake cam wear and tear	renew
	3.front, rear brake pull cable broke	renew
	4.space of front, rear wheel is too much	renew

P39

Table of Contents

Pay attention to your security..... P1

Safe driving guidelines..... P3

Description..... P5

DIRTBIKES recognition..... P6

Control functions..... P7

Before the operation of inspection..... P11

Rides operate and important points..... P12

Regular maintenance and minor repairs..... P18

Cleaning and storage..... P29

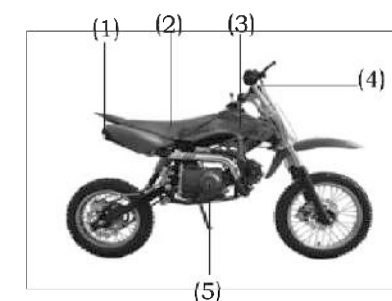
Install process after packaging..... P32

Technical parameters..... P40

Electric diagram..... P41

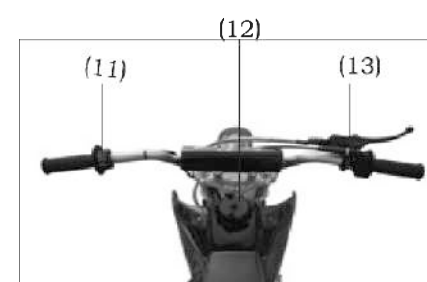
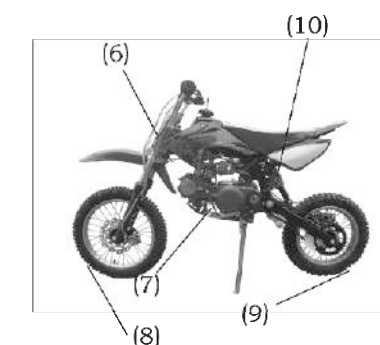
P4

DESCRIPTION



- (1) Muffler
- (2) Seat
- (3) Plastic body
- (4) Handlebar
- (5) Engine

- (6) Front shock absorption
- (7) Gear lever
- (8) Front wheel
- (9) Rear wheel
- (10) Rear shock absorption



- (11) Switch
- (12) Fuel box
- (13) Front brake operate bar

P5

problem instance	reason	Solve way
Engine couldn't work	1.fuel couldn't feed(circuit block up)	Check oil switch, carburetor etc, repair it
	2.break off	Check wire from spark plug to magneto
	3.cylinder broken heavy, piston dead	Repair or renew
	4.join bearing dead	Repair or renew
	5.other device couldn't work	Check them ,repair or renew
Engine power is not enough	1.circuit block up	scatter
	2.ignition time is fast or slow	adjust
	3.spark is weak	Check it from spark plug to magneto
	4.mixed gas is thick or thin	Adjust carburetor
	5.engine leaking	Check ,repair
	6.vent-pipe block up	scatter

P38

Hard start or could start	7.spark plug problem	①spark plug is dirty	Clean it with gas
		②insulator of spark plug broke	Renew spark plug
		③space of spark plug is too big or small	Renew or adjust
	8.magneto problem	①low-press wire is short circuit or turnoff	Find it , repair or renew
		②ignition broke	renew
③ignition coil		renew	
9 .foot start could work		Repair or renew	
10.other device couldn' t work		Check and repair	

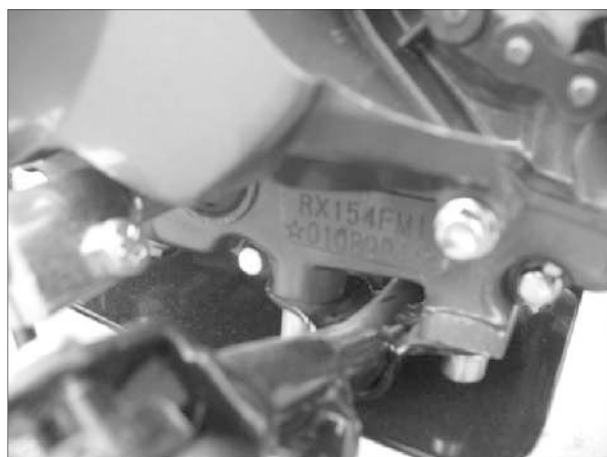
Engine is instability	1.ignition touch is not good	Connect again
	2.electrode of spark plug is dirty	Clean it
	3.all circuits block up	scatter
	4.clutch skid	Repair or renew
	5. mixed gas is thick or thin	Adjust carburator
	6.engine oil is not enough	Add engine oil
	7.vent-pipe block up	clean

P37

OFF ROAD DIRTBIKE RECOGNITION



VIN plate number and product



Engine model and serial number

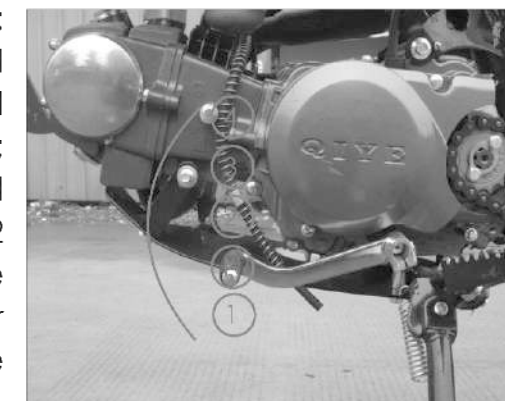
P6

CONTROL FUNCTION



1、 The ignition switch

2. The shift system: This car is often used international 4 stall cycle stall system; From the next upward are: 1 stalls - free - 2 files - 3 stalls - 4 stall. Be sure to meet together with the use of the clutch.



3. The front wheel brake handle: front-wheel brake handle in the right hands. To handle its direction pinch Rafah as a front-wheel brake.

P7

Common problem

problem instance	reason	Solve way	
Hard start or could start	1.no mixed gas in cylinder	①leaking for intake system	Screw down on sealed point
		②oil way plugged up	scatter
	2.heap fuel in cylinder		Open spark plug, clean fuel
	3.fuel has water or dirty		Clean fuel tank, carburator, change fuel
	4.cylinder compression low	①spark plug leaking	Screw down spark plug
		②leaking on the sealed point between cylinder cover and cylinder body	Clean it, install gaskets,screw down nut
③crankcase leaking		Renew crankcase or sealed glue of crankcase	
5.exhaust block	④piston ring or cylinder body wear and tear heavy	Renew piston ring or cylinder body	
	⑤piston ring broke off or block	Renew piston ring or clean it	
6.mixed gas is thick or thin		Adjust carburator	

P36

Emissions Warranty Parts List

Fuel Metering Systems: Carburetor, Carburator Air Jet Solenoid Valve, Idle Air control Valve, Intake Manifold

Exhaust System: Exhaust Gas Control Valve, Exhaust Manifold

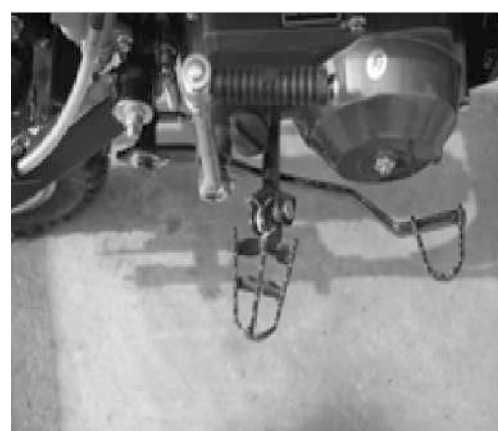
Ignition System: Ignition Coils, Spark Plug, Spark Plug Wire, Spark Plug Cap

Emission Control System: Air Cleaner Housing, Air Cleaner Housing Cover

Emission-Related Part Number Coolster Speedmax QG-214S

Fuel System:	Mfg of parts: Zhejiang Qiye Scooter Co., Ltd
Carb / mixer Assy.	CARB-MIX-1
Intake Manifold	INTAKE-MAN-1
Ignition system:	Mfg of parts: Zhejiang Qiye Scooter Co., Ltd
Spark Plug	SPARK-PLUG-1
Exhaust System:	Mfg of parts: Sichuan Zhongzi Exhaust Purge Co., Ltd
Exhaust Manifold	EXHAUST-MAN-1
Catalyst	CATALYST-1
Crankcase System:	Mfg of parts: Zhejiang Qiye Scooter Co., Ltd
Air Cleaner Housing Cover	AIR-CLN-HOU-CVR-1

P35



4. The rear brake pedal: rear-wheel brake pedal at the right side of the car. Riding next to the brake pedal to the rear brake.

5. The fuel Cover: Note: the fuel Cover mouth ventilation can not plug.



P8

6. The fuel valve: the fuel valve in the fuel filter will supply fuel from the fuel tank to the carburator. Fuel valve has two locations.



Disconnect: fuel will not flow. When the engine is not running, always will be back to handle the position.

Connected: fuel flow carburator. Run,it will handle this position



P9

Warranty Statement

U.S.A. EPA Emissions Limited Warranty

This All Terrain Vehicle (ATV) and Off Highway Motorcycle (OFMC) emissions limited warranty is in addition to the Maxtrade standard limited warranty for All Terrain Vehicles.

Maxtrade warrants that this vehicle are: (1) designed, built, and equipped to conform at the time of initial sale with the requirements of 40 CFR 1051 and, (2) free from defects in materials and workmanship that may keep it from meeting these requirements.

The emissions warranty period for this vehicle begins on the date the vehicle is delivered to the original retail purchaser and ends 5 years or 5,000 km, whichever comes first.

This emission - related warranty covers components whose failure would increase an engine's emissions, including electronic controls, fuel injection, exhaust-gas reticulation, after treatment, or any other system utilized in this vehicle to control emissions. Replacing or repairing other components not covered by this emissions warranty or the standard warranty is the responsibility of the owner; including the parts, labor and other costs associated with recommended maintenance.

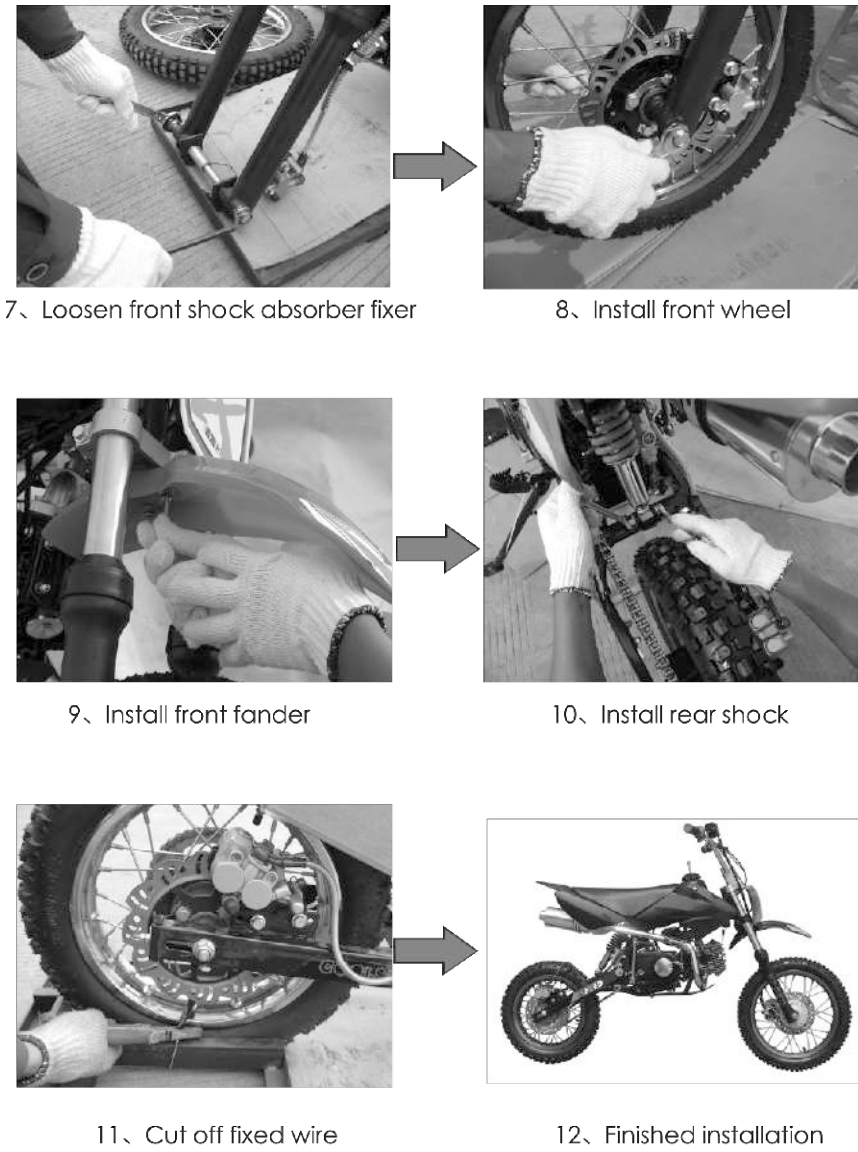
The exclusive remedy for breach of this limited warranty shall be, at the exclusive option of Maxtrade, repair or replacement of any defective materials, components or products. THE REMEDIES SET FORTH IN THIS LIMITED WARRANTY ARE THE ONLY REMEDIES AVAILABLE TO ANY PERSON FOR BREACH OF THIS WARRANTY. MAXTRADE SHALL HAVE NO LIABILITY TO ANY PERSON FOR INCIDENTAL, CONSEQUENTIAL OR SPECIAL DAMAGES OF ANY DESCRIPTION, WHETHER ARISING OUT OF EXPRESS OR IMPLIED WARRANTY OR ANY OTHER CONTRACT, NEGLIGENCE OR OTHER TORT OR OTHER WISE.

ALL IMPLIED WARRANTIES (INCLUDING BUT NOT LIMITED TO ANY IMPLIED WARRANTIES OF MERCHANTABILITY AND FITNESS FOR A PARTICULAR PURPOSE) ARE LIMITED IN DURATION TO THE WARRANTY PERIOD DESCRIBED HEREIN. MAXTRADE DISCLAIMS ALL EXPRESS WARRANTIES NOT STATED IN THIS WARRANTY. Some states do not allow limitations on how long an implied warranty lasts, so the above limitation may not apply if it is inconsistent with the controlling state law.

This limited warranty excludes failures not caused by a defect in material or workmanship. This limited warranty does not cover damage due to accidents, abuse or improper handling, maintenance or use. This limited warranty also does not cover any engine that has been structurally altered, or any engine that has been used in racing competition. This limited warranty also does not cover physical damage, corrosion or defects caused by fire, explosions to other similar causes beyond the control of Maxtrade.

P34

DEVANNING ASSEMBLY



P33

7、Choke:

Resistance carburetor throttle in the left arm. Starting cold engine needs a concentration of combustible gas concrete. In such circumstances, will be impacted throttle arm moving down. After preheating the engine will pull rod to the original starting position.



8、Starter: Under starter pedal to the left engine rotational direction, riding with their feet gently under starter until gears meshing. Then under the smooth and powerful ride to Starter.



P10

BEFORE THE INSPECTION OPERATION

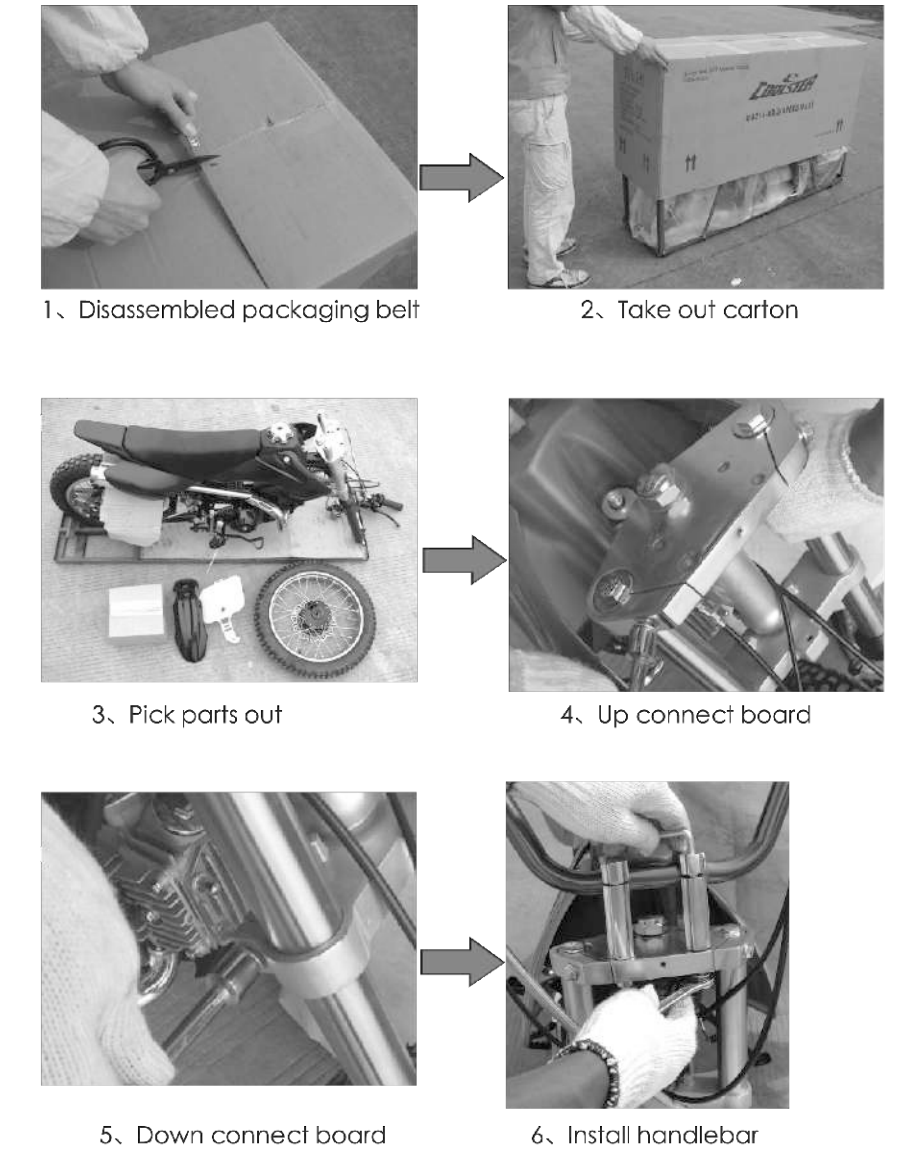
Prior to the use of the car, should check the following

Item	Normal checks
Brake	inspection operation, should be freedom itinerary. If necessary, should be adjusted. Brake Performance confirm whether the good work can be checked out at low speed.
accelerator	Check whether the smooth operation of the accelerator. If necessary, should be conducted lubrication / adjustment.
Chain -driven	chain of lax inspection and state. If necessary, should be adjusted.
Tire / wheel	checks tire pressure, wear, damage and the rate of take -up of the round.
Transmission and brake pedal shaft	inspection operation is smooth and, if necessary, should be conducted lubrication.
BrakeandClutch manipulation of the handle shaft	operation of inspection, if necessary, should be conducted lubrication.
The stents and stent -axis side	check whether the smooth operation, if necessary, should be conducted lubrication.
Parts / Fasteners	inspection of a ll parts and fasteners . If necessary, should b e carried out Tightening / adjustment.
Fuel tank	inspection of the fuel oil /if necessary, should be enough fuel

Warning: ● If the item prior to use in adverse conditions, should be repaired prior to use.

P11

DEVANNING ASSEMBLY



P32

two weeks an additional charge.
 6) wash and dry your car, paint waxing to all, to all chrome painted on the surface antirust oil.
 7) to inflatable tires, tire pressure up to the required standard air pressure. After stopping the car will be good, with shelves or pieces of wood and other wheels will be boosted so that the wheel does not contact with the ground.
 8) will cover the car to prevent the dust down. Do not use plastic sheeting to things such as gas-tight coverage, as there are for the mechanical vapor corrosion.

Transport

1. Vehicles should be solidly fixed on the transporters, there should be effective rain preventing measures, without bumps and damaged phenomenon happen.
2. The packing carton shall not be tilted on the way of delivery.

AFTER THE RE-USE STORAGE

- 1) Remove the guards cover the car, clean the body. If placed more than four months, the need for replacement of engine oil.
- 2) add fuel to the fuel tank.
- 3) all of the pre-inspection lane.
- 4) before traveling during the next regular session, a choice open, pedestrian areas for less performance inspection, confirmed Properties normal traffic could resume normal.

P31

DRIVERS MUST

Fuel: fuel compartment confirm the adequacy of fuel.
 Warning:
 ● Do not add fuel tank drive. Otherwise, and in the subsequent heating and fuel inflation, the fuel will overflow.
 Fuel spillage should be avoided in the hot engine

Recommended fuel: 90 "petrol
 Fuel tank capacity:
 Total: 3.5 L

P12

Oil :

Oil confirm whether oil at the designated place.
 1、 the maximum oil level. 2、 the lowest of oil.



Recommended oil

Oil:
 Total: 0.9 L
 Regular replacement of oil: 0.8 L
 Oil Filters replacement: Does deformation, damage.

P13

STORAGE

If the park does not need to use a long time, in order to maintain a good state of the car, you please address the following methods:

- 1)、 select the right parking place. The location should have security, ventilation, moisture-proof, anti-freezing conditions.
- 2)、 for engine lubricants.
- 3)、 in the fuel tank and the carburetor fuel release all net, oil stored properly. Note: Do not overlook the release carburetor net residual oil. Otherwise, no need for a long time, the surface of the plastic fuel carburetor of holes to plug, re-use of the car when trouble.

Warning: volatile fuel in the fuel emissions, the engine must be stopped operating in the ventilation good place to prohibit smoking ban on the use of open flame and sparks objects.

4)、 In order to prevent cylinder rust, we should adopt the following measures:

Remove spark plugs, A Spoonful (15 ~ 20 m) from the clean engine oil into the cylinder spark plug hole with a piece of cloth spark plug holes starter motors, mobile number to Detroit from top to bottom so that the oil in the cylinder wall are cloth. Finally, the spark plugs and spark plug cap installed.

5)、 Battery demolition down, stored in antifreeze, sunscreen, and other items collision difficult places. Every

P30

CLEANING

1. In order to keep the car clean and protect the surface appearance of the painting, electroplating, should regularly or irregularly its cleansing. When cleaning, use of external surface water irrigation, rush soil. Use a soft cloth or sponge dip cleaning liquid bubble gently cleans the outer surface, to avoid residual gravel surface and paint scratches electroplating layer. Finally reuse water for irrigation.

2. Attention:
● washing, to avoid using the high-pressure water erosion under parts:

- (1) off switch;
- (2) The exhaust pipe muffler exports;
- (3) air filter inlet

After the car wash thoroughly dry, and then start engine, running for a few minutes. Finally repeatedly braking performance brake inspection and adjustment until braking performance standards so far.

Special Note: in the hot engine, the first will not wash. Engine room temperature with the same question again when cleaning. If water pressure caused the brake, the former damping seals and electrical parts Loss.

P29

Tires

1. Tire pressure

Before the cars in operation, should always check and adjust tire pressure. (Tires Barometer)

2. Tire Inspection

Before the cars in operation, should check the tires. If excessive tire wear, to be replaced.

Warning:

- use of the tire wear is dangerous to travel

	Size	Pressure
Front tire	2.75-14	32psi
Rear tire	3.0-12	32psi

P14

Important elements operation and rides

Cold Start and engine preheating

Note: This car has used to control the operation of brake motor starter switch. Only in pinch engine brake handle on when to start. We had closed choke before delivery.

- 1, will be off to the operation by switching positions.
- 2, the fuel valve turn to: " (follow picture)" position.
- 3, will be redeployed to the free stalls position
- 4, press the start switch.
- 5, will be under starter pedal to the left engine direction of rotation, using footsteps tread gently under starter until gears meshing. Smooth riding and then forced under the engine to start

6, the resistance after heat engine throttle arm downward completely open.

Note: If the engine can not start, please try again

Note: In order to achieve maximum engine life, before moving to engine should always be preheated. Not on a Cold-engine acceleration



P15

The drive chain lubrication

The chain includes many mutual operation of the parts. If the chain would not carry out proper maintenance, the chain that will soon wear. Therefore, we must carry out regular maintenance of the chain. In this dusty region riding car, the more maintenance is necessary.

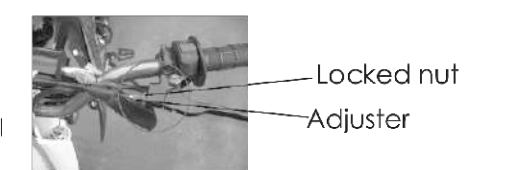
1, may use any brands of spray-chain lubricant. First, the use of brush or cloth to remove all the dirt and mud masonry. Then two rows of siding between the center and all spraying lubricant on the roller.

2. For cleaning chain, will be removed from the board, the Baptist in solution should as far as possible removal of masonry scale. The chain removed from the solution and make it dry. The chain lubrication will be carried out immediately to prevent corrosion.

Clutch cable adjustment

Through rotational regulator to adjust the clutch cable, it can reach the correct manual clutch free trip.

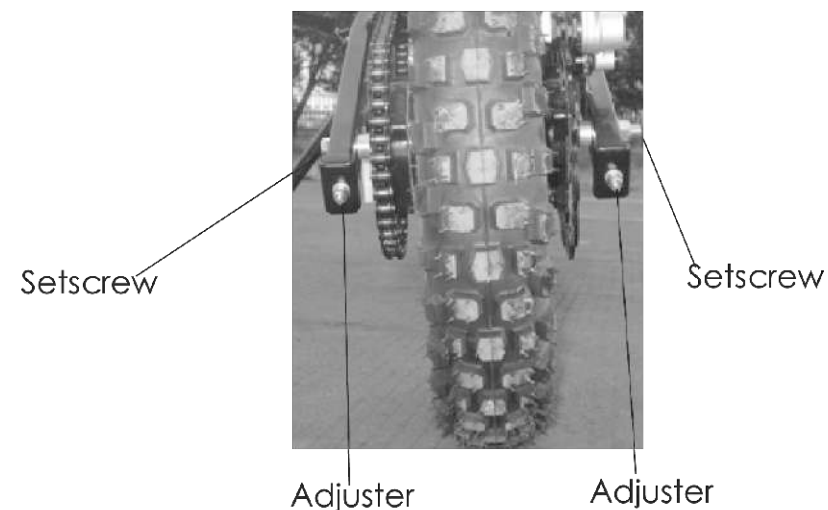
- 1, loosen lock nut.
- 2, diverted or transferred from the regulator, until they reach the correct free trip.
- 3, tighten the lock nut.



P28

4. in the adjustment, must tighten all loosen the parts.
5. in the adjustment, the chain must tighten regulation of the fixed screws and nuts.

Note: chain relaxation too small engines and other key will zero overloading. Relaxation should be made to maintain the prescribed limit scope.



P27

Hot engine starter

When the engine has been preheated, then you do not need closure resistance throttle.

The engine stalls and accelerated change

- 1、 the first advance stalls gear.
- 2、 ease gradually to open the throttle.
- 3、 when the speed fast enough, we will enter a higher gear stalls stalls, closed throttle, while the rapid manipulation clenched clutch handle. Then promote the second stall gear.
- 4、 open the throttle and clutch control handle will gradually relax.
- 5、 repeat the above process, can enter into a higher gear stalls.

The commissioning Engine

0-1000 km from the motorcycle mileage during your life is very important for the period. Because the engine is new and in the meantime we must avoid prolonged Full Throttle or any situation that could be the super-engine overheating.

P16

1,0 ~150 km:

Operation and avoid prolonged refueling over 1 / 4 throttle position. An hour after the operation should cease engine to cool 5 to 10 minutes. Should often transform the speed and the car stalls

2,150 ~ 500 km:

Operation to avoid refueling over 1 / 2 throttle position. At any time, should not be used Full Throttle operation of this vehicle.

3500 ~ 1000 km:

To avoid refueling over 3 / 4 throttle position.

4,1000 km long and more:

Full throttle operation should be avoided. Avoid low-grade high-speed engine work.

Note: When traveling to the 300 km ~ 500km, the oil must be replaced.

As the car had not been installed Odometer to estimate mileage can only be calculated.

Parking

Warning:

- because after running and the exhaust muffler very hot, vehicles should be parked in child care and others not likely to encounter places.



P17

Driving chain relaxation of inspection

Note: rotating wheel several times to identify the most compact location of the chain. When the chain in the most compact position, check or adjust chain relaxation.

The normal relaxation of 15 to 25 mm. If relaxation beyond 25 mm should be adjusted



The drive chain adjustment

- 1、 loosen the rear brake adjuster.
- 2、 loosen after the axle nut
- 3、 For tensioning chain, the chain by rotating clockwise direction on the M6 regulator anti-retreat-pine nut . If required relax chain, according to the direction of rotation 10,000 anti-chain adjuster on the M6 and the prevention of anti-retreat Pine Nut . Forward and rear axle into. The same should be fully rotate the regulator of the M6 and the prevention of anti-retreat Pine Nut , Pian would maintain coaxial.

P26

Spark Plug inspection

Model: D7TC
 Clearance: 0.6 ~ 0.7 mm
 Torque: 12.5 N • M

The spark plug is an important engine parts, and easy to check. The state can spark plug of the engine that state.

The normal riding in the car, in the center electrode white ceramic insulators around the ideal color is appropriate. Brown. Do not attempt to self-diagnosis of any fault, and should be sent to COOLSTER the car dealer or repair shop. You must be regularly removed and examined spark plugs, as heat and carbon deposition will spark plugs slowly breakdown and ablation. If the electrode ablation too seriously, we must use the provisions of its spark plugs will be replaced.

Before installing the spark plug, the regulation should be used to measure the thickness electrode gap, if necessary, will be adjusted to space requirements value.

Note: If you have not installed when the spark plug torque wrench, torque correct estimation method is tightening its hand to exceed 1 / 4 to 1 / 2 laps.



P25

Regular maintenance and minor repairs

Periodic inspection and emphasize peace and lubrication and the car will at the best and most effective work state.

Note: If you are not familiar with this vehicle maintenance services, the work should be COOLSTER maintenance station.

Regular maintenance / Lubrication

Item	Notes	Running — in1000 km or one month	Initial 3000km 0 r three months	every 3000km 0 r three months
Spark plug	heck their state. When necessary, should be cleaned or replaced.	☆	☆	☆
Air filter	Cleaning. If necessary, should be replaced.	☆	☆	☆
carbulator	Idle checks starting operation. If necessary, should be adjusted.	☆	☆	☆
Fuel pipe*	Check whether the fuel for cracks or damage there. If necessary, should be replaced.	☆	☆	☆
Oil filter**	Check the status. If necessary, should be replaced.		☆	☆

P18

Engine oil	The replacement. (In the engine prior to release oil preheating)	300km and 1000km the first replacement	☆	☆
Engine oil filter*	Cleaning. If necessary, adjust or replace	☆		
Tire/wheel	Check tire pressure / balance / Wearstate / poor place, if necessary, repair or replacement		☆	☆
Front wheel bearing*	Bearing components check whether loosening / damaged. If damaged, and should be replaced**	☆	☆	☆
Rear wheel bearing*	Bearing components check whether loosening / damaged. If damaged, and should be replaced.**		☆	☆
Chain-dri	Check chain	☆	☆	☆
Parts/fastners	Check all the parts and fasteners. Necessary correction should be carried out.	☆	☆	☆

*: We propose that these items should be COOLSTER repair station for maintenance services.

** : Medium weight wheel bearing grease.

P19

The throttle cable adjustment

Note: In adjusting the throttle cable free trip before, we must adjust engine idling.

Through rotational regulator to adjust throttle cable, it can lead to throttle the right hand free Filed doors itinerary.

Free trip:
2 to 5 mm

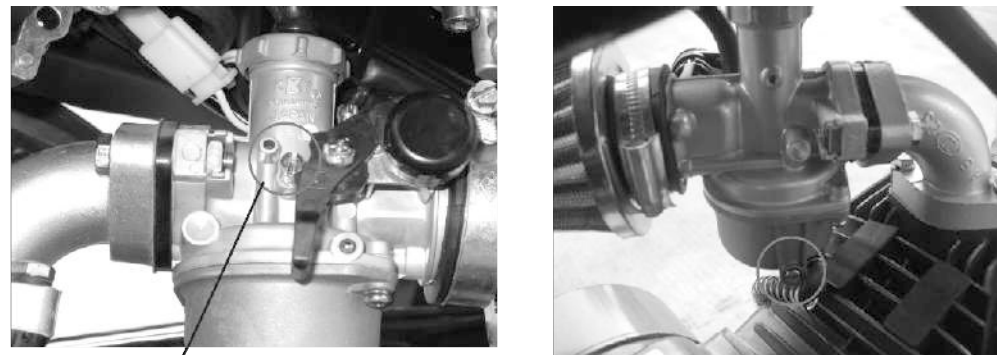
- 1, loosen lock nut.
2. Hin into a regulator or until attaining the free trip.
- 3, tighten the lock nut.



Locked nut

Adjuster

P24



Screw idling

Screw release oil

Crankcase emission filter of the circulatory system

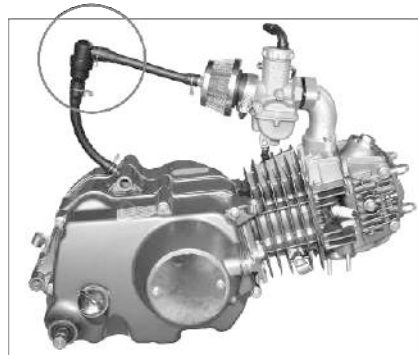
1, the part works for 150 hours ,please cleaning to make the part to use normally.

2, take out filter of oil and gas separator, using gasoline or kerosene to carry out the washing, and drying .

3, in the filter out, remember not to damage the filter.

4, the part may clean and use repeatedly in the non-damage's situation.

5, the part in use, will be regularly open sewage outfall for discharge, the user can also be observed at any time, please discharge the squalidity in accordance with the actual situation.



Air Filters

Filters should carry out regular checks, cleaning. If necessary, replaced.

P23

Parts / Fasteners

Prior to the use of the car, should always check with the parts and fasteners tight degrees. We suggest that these projects should be carried out irregular inspections. (I asked, after the demolition of the self-locking nut Please replacement of the self-locking nut, as will the use of safety.)

Correspondence tables fastening torque

Screw size	Fightenin g torque	Standard torque	Screw size	Fightening torque	Standard torque
M5	4.5-6.0	5	M10	37-79	60
M6	8-12	9	M12	73-115	99
M8	16-26	23	M14	146-205	180

Oil

1, the measurement of oil

A. Engine preheater minutes.

B. When the engine stopped operating, hold on a few minutes later, the oil Cypriots will be removed after the oil-observation.

P20

C. The oil should be located at the highest and the lowest among the oil-marker. If the oil level low, should be enough oil to rise to the oil-appropriate.

2, oil and oil filter replacement of the replacement. (Photo)

A. Engine preheater minutes.

B. engine will stop. In an engine oil was placed underneath.

C. discard release oil bolts, release oil. Put oil may moderate shaking body to be inside the engine from impurities.

D. installed release oil bolts, and then full of engine oil. Tightening oil Cypriots.

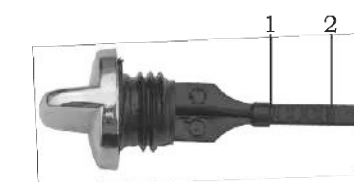
1. Starting engine and a few minutes to preheat. Preheat should check whether there are oil spills. If it appears that an oil spill, should immediately stop engine and check reasons.

3, the replacement of oil in the second about a month or so to clean oil filters



The refueling

Screw release oil



P21

Warning:

● Do not join any chemical additives. Also lubricating oil clutch, clutch slipping and additives will.

Note: In the replacement of oil, must be in accordance with the following method to check oil pressure.

1, removed the cylinder covered with oil release bolts.

2, starter motors, and keep them idle until the oil outflow from caving hole. If no one minute after the oil outflow or unusual phenomenon, should stop the engine running to the nearest COOLSTER dealer or repair shop for repair.

3, after the test should be tightened release oil bolts.

Carburetor adjustment

Carburetor is a key part of the car, the need for fine adjustment. Most adjustments should be entrusted with the expertise and experience COOLSTER dealers or repair shops.

Idle adjustment

1. Connect speed LAU

2. Speed Festival through idle screw on the carburetor, idling provisions set to rotate within the raise into the engine speed, to a decrease in engine speed from.

Standard Idle:
1500 ± 150 to / min

P22