

Technical Data Guide

Polyether Technology

CSI Section No. 07 92 13

Chem Link Inc.

Telephone: 800-826-1681
Fax: 269-679-4448
353 East Lyons
Schoolcraft, MI 49087
www.chemlinkinc.com

Last Revision: 08/09/10

Product Description

NovaLink is a moisture curing, polyether sealant designed for application in damp, dry or cold climates. **NovaLink** is solvent free and contains no isocyanates. **NovaLink** will not shrink upon curing, will not discolor when exposed to UV light, and can not "outgas" or bubble on damp surfaces urethane sealants often do. **NovaLink** has excellent adhesion to most construction materials and resilient "elastomeric" properties. **NovaLink** is capable of joint movement in excess of 25% compression and extension. Because it cures in wet or dry climate conditions and at low temperatures (30° F), **NovaLink** can be used effectively in many difficult construction site conditions.

Applicable Performance Standards

- ASTM C-920, Type S, Grade NS, Class 25, Uses NT, T, M, G, A and O
- Federal Specification TT-S-00230-C Type II, Class A
- Corps of Engineers CRD-C-541, Type II, Class A
- Canadian Standards Board CAN 19, 13-M82
- SWR Institute Validated (Sealant Waterproofing and Restoration)
- AAMA 802.3-08 Type II, AAMA 803.3-08 Type I, and AAMA 805.2-08 Group C

Regulatory Compliance

- Conforms to OTC Rule for Sealants and Caulks
- Meets requirements of California Regs: BAAQMD, CARB and SCAQMD
- Conforms to California Proposition 65
- Conforms to USDA Requirements for Non-food Contact

Green Standards:

- LEED 2009 for New Construction and Major Renovations: Low Emitting Materials (Section 4.1) 1 Point
- NAHB Model Green Home Building Guidelines: 5 Global Impact Points
- VOC Content at 240° F: less than 19 grams/liter (including water), ASTM D2369, EPA Method 24



Advantages

- Solvent free, 100% solids, will not shrink
- 30 minute skin over, resists dirt pick up
- No outgassing on damp surfaces
- Color stability, will not suntan or discolor
- Paintable within 24 hours (See limitations)

Colors

Med. Bronze	Dark Bronze	Black
Forest Green	Stone	Gray
Terra Cotta	Aluminum	Limestone
Tan	Almond	White

* Color matching is available in batch quantity only

Packaging

- **10.1 oz (300 ml)**
24 cartridges/carton, 45 cartons/pallet
- **20 oz (600 ml) available by special order**
12 sausages/carton, 45 cartons/pallet
- **2 and 5 gallon pails and 50 gallon drums available by special order**

Joint Preparation

Joint surfaces should be clean, dry and free from all contamination including: dirt, oils, grease, tar, wax, rust and any other substance that may inhibit the sealant's performance.

Joint Design

Install all joint applications per ASTM and SWRI recommendations and guidelines. Joints shall be designed with a depth to width ratio of 1:2 (joint depth one-half the width). Control the depth of the sealant by using a polyethylene backer rod that is 25% larger than the joint opening at standard temperature. To prevent three-point adhesion use a backer rod or bond breaker tape to ensure proper joint movement and a long lasting weatherproof seal. Where the joint configuration will not permit a backer rod, Chem Link recommends that an alternative bond breaker be used.

Joint Width Inches (mm)	Joint Depth Inches (mm)
1/4 - 1/2 (6-13)	1/4 (6)
1/2 - 3/4 (13-19)	1/4 - 3/8 (6-10)
3/4 - 1 (19-25)	3/8 - 1/2 (10-13)
1 - 2 (25-50)	1/2 (13)

Basic Uses
Expansion Joints
Pre-cast Concrete
Block and Masonry
Curtain Walls
Window and Door Frames
Siding
Parapets
Cove Joints
Transportation
Weather Sealing

Typical Uncured Properties

Gun Grade	Zero Slump ASTM C 697
Viscosity	1,200,000+ cps Brookfield RVF, TF spindle, 4 RPM, 73° F
Tack Free Time	45 minutes - ASTM C-679
Odor	Mild Mint Smell

Typical Cured Properties

Elongation at break	300 - 400%	ASTM D-412
Hardness Shore A	30 +/- 3	ASTM C-661
Shear strength	175 PSI	ASTM D-1002
Low temperature flex	Minus 10° F pass ¼ inch mandrel	ASTM D-816
Shrinkage	No measurable shrinkage after 14 days	
Service temperature	Minus 40° F to 200° F continuous service	
Shelf life	Cartridges: 1 year Sausages: 1 year Pails: 3 months	

Compatible Substrates*

Concrete
Block and Brick
Stone
Masonry
Aluminum and Galvanized Metal
Wood
Engineered Plastics, PVC
Glass
Fiberglass FRP
EPS Foam

***Test and evaluate to ensure adequate adhesion.**

Application Guidelines

Concrete

Prior to application remove any residual contamination by mechanical abrasion, sand blasting or power washing. On green concrete, remove all release agents and friable and loose concrete. Dry all visible and standing water prior to applying **NovaLink**. Install an appropriate backer rod to avoid three-point bonding.

Metal

Prepare all metal to ensure maximum adhesion. Remove all rust, scale and residue by wire brushing to a bright metal sheen. Remove films, loose or inappropriate coatings and oils with an appropriate solvent such as alcohol.*

**Chem Link recommends that coated substrates be tested for adhesion prior to starting a project. Please contact Technical Services for specific application guidelines and recommendations.*

Wood

Wood should be clean, sound and dry prior to sealant application. Allow treated wood to weather for six months prior to application. Remove all coatings and paint (or test for compatibility) to ensure proper bonding. Do not use on fire retardant lumber.

Priming

In most instances **NovaLink** will not require a primer. However, certain applications or substrates may require a primer to ensure a long lasting bond and weatherproof seal. It is the applicator's responsibility to determine the need for a primer. Chem Link recommends a primer be used for any application where prolonged immersion is anticipated.

Storage

Store original, unopened containers in a cool, dry area. Protect unopened containers from water, heat and direct sunlight. Elevated temperatures will reduce shelf life. **NovaLink** will not freeze.

Clean-Up

Wet sealant can be removed using a solvent such as alcohol. Cured **NovaLink** can be removed by abrading or scraping the substrate.

Shelf Life

One year from date of manufacture when stored in normal environments. High temperature and high relative humidity may significantly reduce shelf life. Pails and special orders have a shelf life of three months.

Application Instructions

Remove all dirt, oil, loose paint, frost and other contamination from all working surfaces with alcohol. DO NOT USE petroleum solvents such as mineral spirits or xylene. Maintain **NovaLink** at room temperature before applying to ensure easy gunning. Test and evaluate to ensure adequate adhesion. Apply with a quality caulk gun. Cut the cartridge nozzle at a 45° angle and to the desired gauge/length. Puncture inner seal and carefully gun the sealant with a smooth, continuous bead. If tooling is needed, do so within fifteen minutes.

Caution

Avoid prolonged contact with skin. Uncured adhesive irritates eyes. In case of contact with eyes, immediately flush with water. Call a physician. Please refer to the MSDS for First Aid information. Most current MSDS can be found at www.chemlinkinc.com.

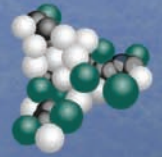
KEEP OUT OF REACH OF CHILDREN.

Limitations

- Horizontal applications will require tooling.
- In areas where prolonged chemical exposure is anticipated, contact Technical Services for recommendations.
- Allow treated wood to "cure" for six months prior to application per APA guidelines.
- Do not use in areas subject to continuous immersion.
- Do not store in elevated temperatures.
- Allow asphalt to cure a minimum of six months before applying **NovaLink**.
- Remove all coatings and sealers before application.
- Test and evaluate all paints before application. Alkyd and oil based paints may dry slowly.



Chem Link®



Contractor Driven

A Complete Product Line of Adhesives, Sealants and Waterproofing

- High Performance
- ZERO Solvents
- Odor FREE
- Non Flammable
- Non Toxic
- Non Polluting
- LEED Eligible

Contractor Hot Line

800-826-1681

www.chemlinkinc.com



Notes :

Read and ensure that the most up-to-date MSDS and technical guidelines are being followed. Proper use and application are the responsibility of the applicator. Direct any questions to Technical Services at 800-826-1681 prior to starting the project.

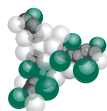
IMPORTANT NOTICE

Except where prohibited by law, Chem Link makes no warranties, expressed or implied, statutory or otherwise, including but not limited to, any implied condition or warranty of merchant ability or fitness for a particular purpose. User is responsible for determining whether this Chem Link product is fit for a particular purpose and suitable for user's method of application.

LIMITATIONS OF REMEDIES AND LIABILITY

If this Chem Link product is proved to be defective, the exclusive remedy at Chem Link's option shall be to refund the purchase price of or to repair or replace the defective Chem Link product. Chem Link shall not otherwise be liable for loss of damages, whether direct, indirect, special, incidental or consequential, regardless of the legal theory asserted, including negligence, warranty or strict liability.

Chem Link®
Advanced Architectural Products
Contractor Driven



Contractor Hot Line

800-826-1681

www.chemlinkinc.com