

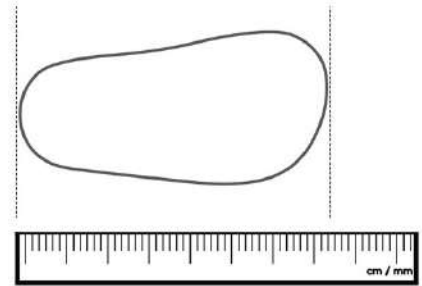
1

Take some paper, a pencil and a ruler. Place the baby's foot on the paper and trace around their toes and ankle, like the image.



2

Measure the length and make a note of the measurement in centimeters. Use the chart below to find their Tip Toey Joey's size.



sit+crawl

0 • 1 year
16 - 19

CM	SIZE
8.4 • 9.3	16
9.4 • 10.3	17½
10.4 • 11.0	19

up+go

1 • 3 years
19 - 25

CM	SIZE
10.4 • 11.0	19
11.1 • 11.7	20
11.8 • 12.4	21
12.5 • 13.0	22
13.1 • 13.7	23
13.8 • 14.4	24
14.5 • 15.1	25

run+play

3 • 7 years
24 - 34

CM	SIZE
13.8 • 14.4	24
14.5 • 15.1	25
15.2 • 15.8	26
15.9 • 16.4	27
16.5 • 17.1	28
17.2 • 17.8	29
17.9-18.5	30
18.6 • 19.1	31
19.2 • 19.8	32
19.9 • 20.5	33
20.6 • 21.1	34