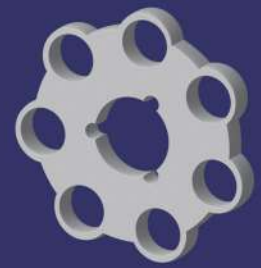


# CPACK LTD

TECHNOLOGY IN MOTION



## SWSA SEMI-AUTOMATIC WRAPPING SYSTEM



- Easy to operate
- Wraps up to 20 products per minute
- Product size up to 73mm diameter
- Stainless and aluminium construction
- Interchangeable molds
- Minimum maintenance
- Small compact machine
- Electrics single phase supply
- D 47cm W 66cm H 117cm
- Optional label dispenser
- Compressed air operation
- Foot operated

New in 2020, introducing our new generation semi-automatic wrapping system for smaller products. This easy to operate machine wraps up to 20 products per minute. Additional option of a label dispenser.

The SWSA is ideal for wrapping a variety of small rounded products such as soap, cheeses, tape-rolls and similar. It is available with interchangeable molds enabling the wrapping of different sized items. It can handle a wide variety of wrapping materials from paper to .022mm Pearl-PE coated paper to BOPP.



## WORLD LEADING PACKAGING MACHINERY DESIGNED & BUILT IN THE UK

C Pack Ltd, Unit 2, Progress House, Athletic Street,  
Burnley, Lancashire BB10 4LP, United Kingdom  
Web: [www.cpackltd.com](http://www.cpackltd.com) E-mail: [info@cpackltd.com](mailto:info@cpackltd.com)  
Tel: +44 (0)1282 422485



© CPack Ltd