

DETTAGLI

- 2 tasche
- Taschino sul petto
- 2 spacchetti laterali

COLORE

00 Bianco

TESSUTO

50% cotone
50% poliestere
180 g / m²

LUXSATIN



TAGLIE

XS ÷ 4XL
Regular Fit

Le misure indicate si riferiscono alle taglie **S** per i capi femminili, **L** per i capi maschili. Per i capi a taglia unica le misure indicate sono effettive.

Il Best seller Giblor's da uomo, con scollo a V. Un capo sempre perfetto, senza tempo.

COLORI DISPONIBILI



00 Bianco

TABELLE TAGLIE
E CORRISPONDENZE

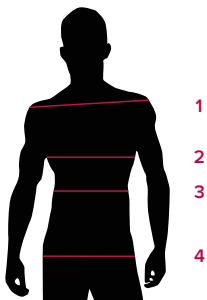
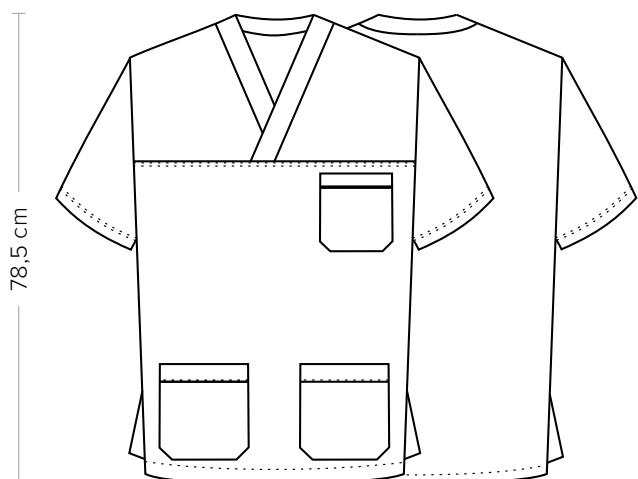


TABELLA ST-MED K1 REGULAR FIT

TAGLIA	XS	S	M	L	XL	XXL	XXXL	4XL
1 - SPALLE								
2 - CIRCONFERENZA TORACE	97-101	102-105	106-111	112-117	118-125	126-133	134-141	142-150
3 - CIRCONFERENZA VITA	99-103	104-107	108-113	114-119	120-127	128-135	136-143	144-150
4 - CIRCONFERENZA BACINO	99-103	104-107	108-113	114-119	120-127	128-135	136-143	144-150

GUIDA ALLE TAGLIE **1)** Prendere le misure anatomiche (corpo con abbigliamento intimo) senza stringere mantenendo ben teso il metro. **Nota:** nel caso vogliate indossare dei camici già con dell'abbigliamento sotto prendete le misure già abbigliati. **2)** Nel caso tra le misure prese vi fosse una misura a cavallo fra 2 taglie vi consigliamo di prendere quella più grande. **3)** Le misure della tabella sono espresse in centimetri.



DETAILS

- 2 pockets
- Breast pocket
- 2 side vents

COLOURS

00 White

FABRIC

50% cotton
50% polyester
180 g / m²

LUXSATIN



SIZES

XS ÷ 4XL
Regular Fit

The measures indicated refer to sizes **S** for women, **L** for men. For one-size-fits-all garments, the measurements indicated are effective.

Giblor's best seller for men, with V collar. A perfect and timeless garment.

AVAILABLE COLOURS



00 White

SIZE TABLES
AND CORRESPONDENCES

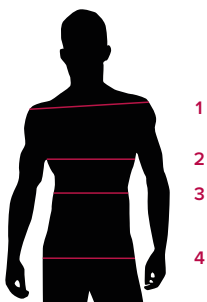


TABLE ST-MED K1 REGULAR FIT								
SIZE	XS	S	M	L	XL	XXL	XXXL	4XL
1 - SHOULDERS								
2 - CHEST CIRCUMFERENCE	97-101	102-105	106-111	112-117	118-125	126-133	134-141	142-150
3 - WAIST CIRCUMFERENCE	99-103	104-107	108-113	114-119	120-127	128-135	136-143	144-150
4 - HIPS CIRCUMFERENCE	99-103	104-107	108-113	114-119	120-127	128-135	136-143	144-150

SIZE GUIDE **1)** Take the anatomical measurements (body with underwear) without tightening, keeping the measuring tape taut. Note: in case you want to wear of the gowns already with the clothing underneath take the measurements already dressed. **2)** If there is a measure between 2 sizes between the measurements taken, we advise you to take the bigger one. **3)** The measurements in the table are expressed in centimeters.