

# A P P A R A T U S



AGED BRASS / BLACK SUEDE

## METRONOME : READING LAMP

### REFERENCE

STRAVINSKY  
COUNTERPOINT  
VILLA MULLER

### COMPOSITION

HAND-WRAPPED LEATHER OR SUEDE BASE  
BRASS ARMATURE AND SHADE

A P P A R A T U S

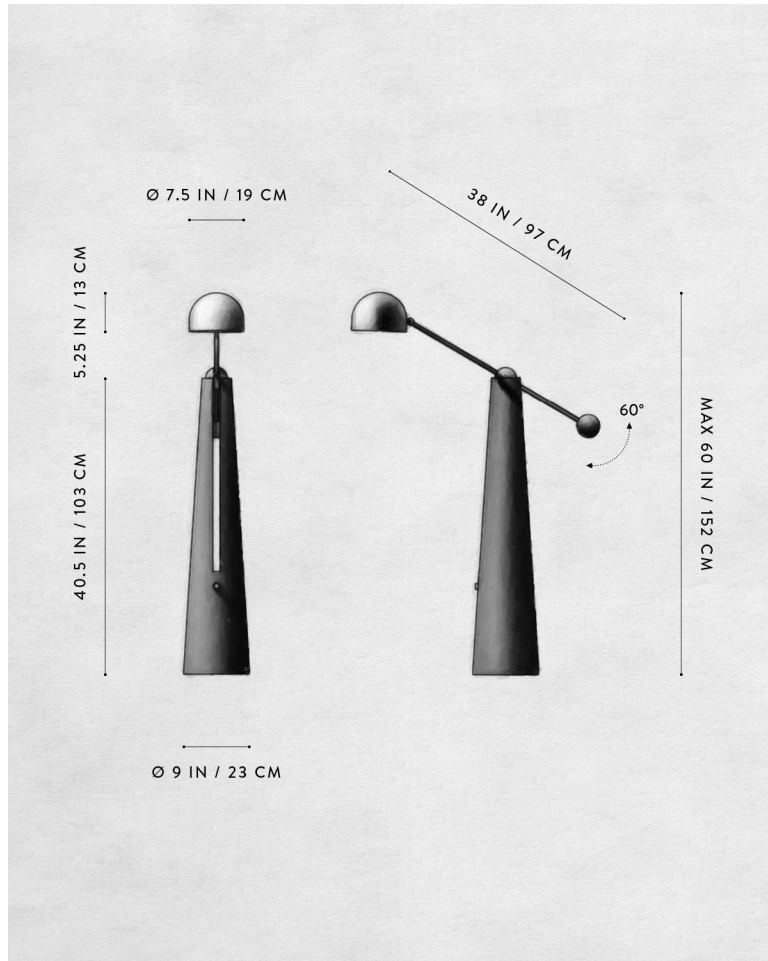


AGED BRASS / PEWTER SUEDE



AGED BRASS / BRONZE SUEDE

# A P P A R A T U S



## DIMENSIONS

## PRICE

## VOLTAGE

## LAMPING

## BULB INCLUDED

## BULB LIFE

## DEPOSIT

## BALANCE

## LEAD TIME

## METRONOME : READING LAMP

44-60 H, ROTATING ARM 38 L IN  
112-152 H, ROTATING ARM 97 L CM

FROM \$9000

120-240

MAX 40W

3.8W DIMMABLE LED BULB

220 LUMENS

2000-2800K

120V : E26 SPHERE I : MATTE WHITE

240V : E27 SPHERE I : MATTE WHITE

15,000 HOURS

50% UPON ORDER

DUE PRIOR TO SHIPPING

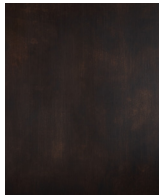
PLEASE REFER TO WEBSITE

FINISHED AND ASSEMBLED BY HAND IN NY  
DOMESTIC AND IMPORTED COMPONENTS

# A P P A R A T U S



AGED BRASS



OIL-RUBBED BRONZE



BLACKENED BRASS



TARNISHED SILVER



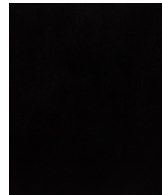
LEATHER - CANE



LEATHER - SADDLE



LEATHER - TAUPE



LEATHER - BLACK



SUEDE - ICE



SUEDE - PEWTER



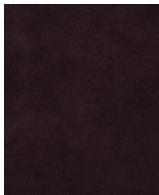
SUEDE - BRONZE



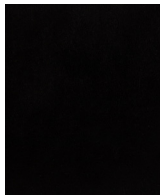
SUEDE - SEPIA



SUEDE - JUNIPER



SUEDE - PLUM



SUEDE - BLACK

METAL

LEATHER

SUEDE

METRONOME : READING LAMP

AGED BRASS [WAXED]  
OIL-RUBBED BRONZE [WAXED]  
BLACKENED BRASS [WAXED]  
TARNISHED SILVER [LACQUERED] ADD 35%

CANE  
SADDLE  
TAUPE  
BLACK

ICE  
PEWTER  
BRONZE  
SEPIA  
JUNIPER  
PLUM  
BLACK