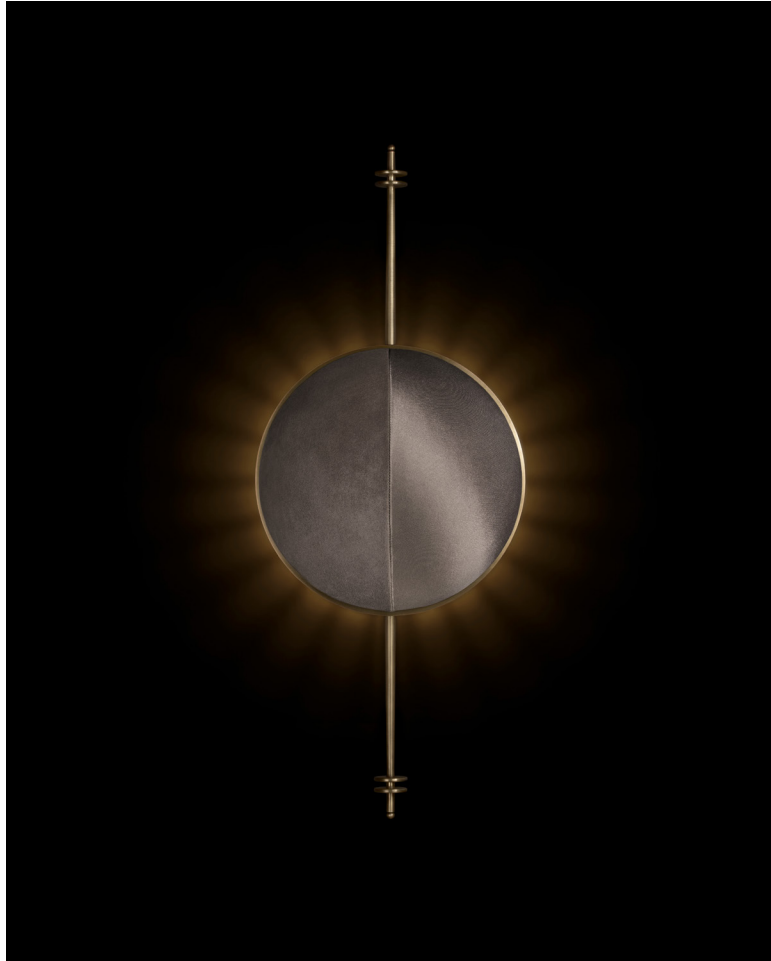


A P P A R A T U S

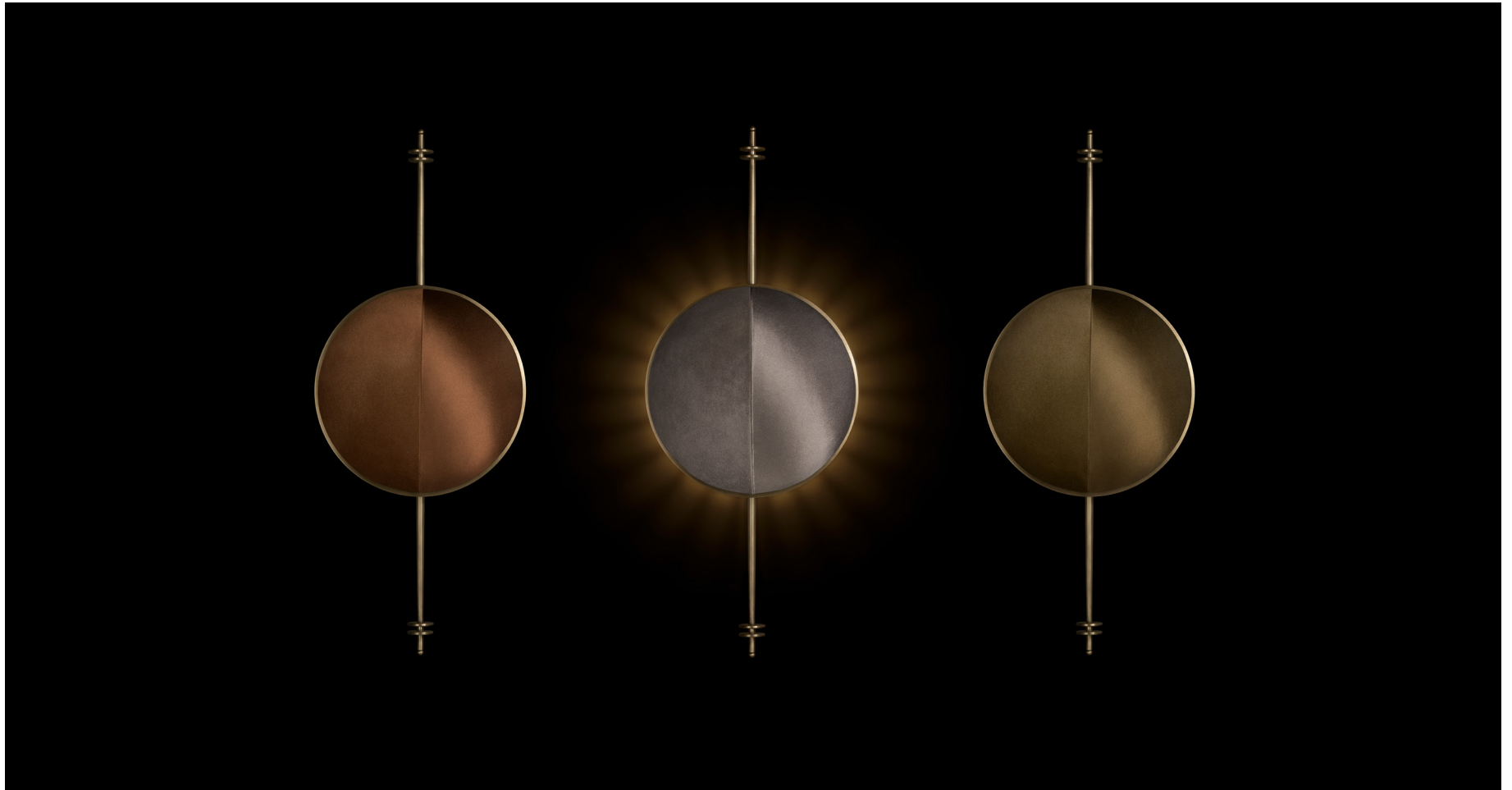


AGED BRASS / PEWTER SUEDE AND SATIN

STARLET : SCONCE

REFERENCE	ANTENNAE VERDURA 1960
COMPOSITION	BRASS ARMATURE TONAL SUEDE AND SATIN SHADE

A P P A R A T U S



TARNISHED SILVER / SEPIA SUEDE AND SATIN

AGED BRASS / PEWTER SUEDE AND SATIN

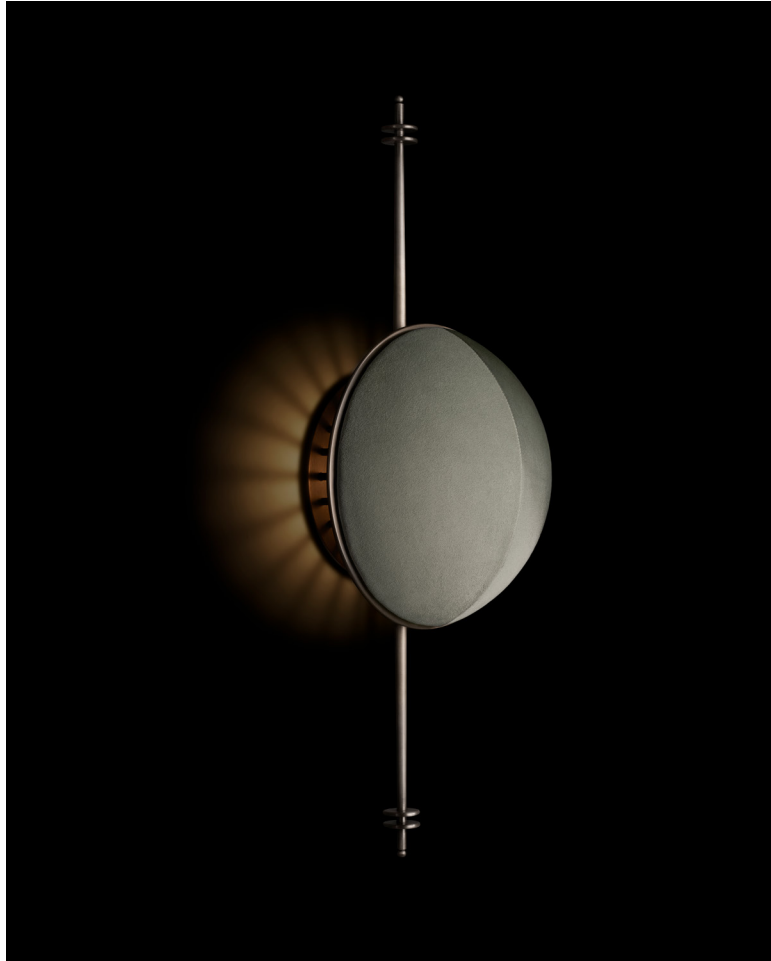
AGED BRASS / BRONZE SUEDE AND SATIN

A P P A R A T U S



AGED BRASS / SEPIA SUEDE AND SATIN

A P P A R A T U S



TARNISHED SILVER / ICE SUEDE AND SATIN



AGED BRASS / SEPIA SUEDE AND SATIN

A P P A R A T U S

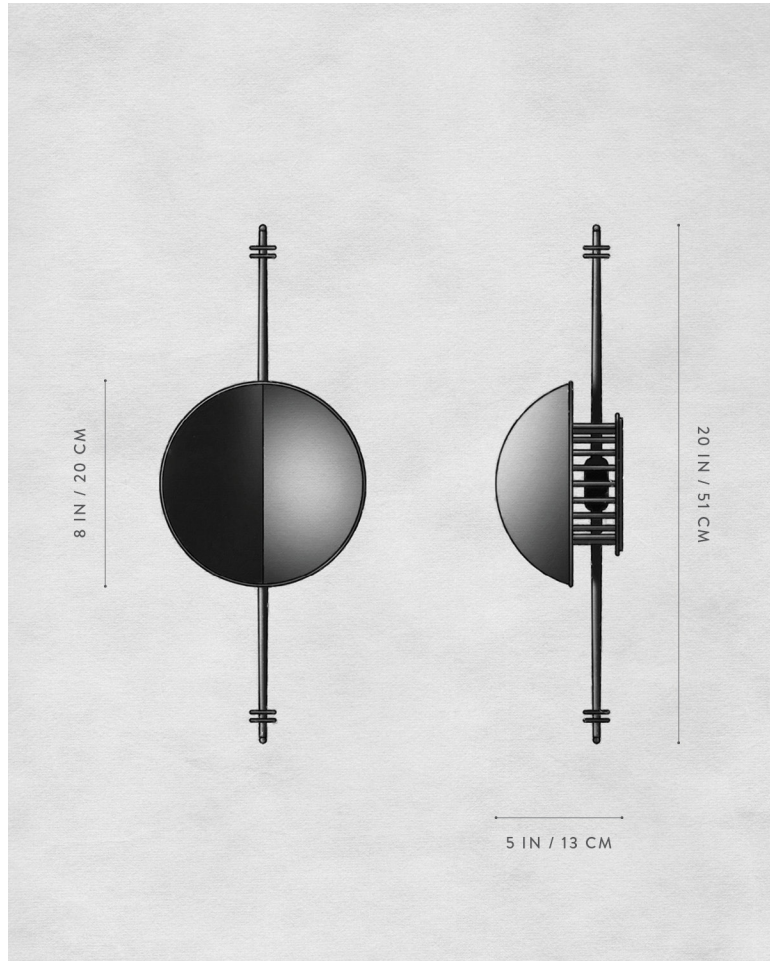


TARNISHED SILVER / JUNIPER SUEDE AND SATIN



TARNISHED SILVER / JUNIPER SUEDE AND SATIN

A P P A R A T U S



STARLET : SCONCE

DIMENSIONS

20 H, 8 W, 5 D IN
51 H, 20 W, 13 D CM
APPROX. 7 LBS / 3 KG

WEIGHT

PRICE

FROM \$5500

VOLTAGE

120-240
ETL / CB / CE / UKCA

LAMPING

MAX 7W

BULB INCLUDED

2200-2700K WARM DIM
120V : GU10, 4W
240V : GU10, 5.5W

DEPOSIT

50% UPON ORDER

BALANCE

DUE PRIOR TO SHIPPING

LEAD TIME

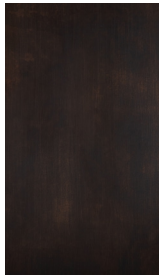
PLEASE REFER TO WEBSITE

FINISHED AND ASSEMBLED BY HAND IN NY
DOMESTIC AND IMPORTED COMPONENTS

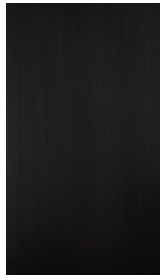
A P P A R A T U S



AGED BRASS



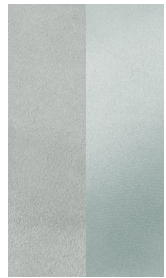
OIL-RUBBED BRONZE



BLACKENED BRASS



TARNISHED SILVER



ICE



PEWTER



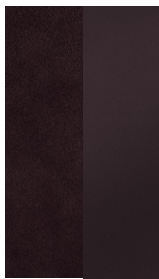
BRONZE



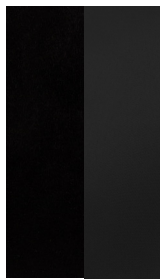
SEPIA



JUNIPER



PLUM



BLACK

METAL

STARLET : SCONCE

AGED BRASS [WAXED]
OIL-RUBBED BRONZE [WAXED]
BLACKENED BRASS [WAXED]
TARNISHED SILVER [LACQUERED] ADD 35%

SUEDE / SATIN

ICE
PEWTER
BRONZE
SEPIA
JUNIPER
PLUM
BLACK