

A P P A R A T U S



OIL-RUBBED BRONZE / COGNAC LEATHER

EPISODE : CHAISE

REFERENCE ROSIE THE ROBOT
 LUNAR ROVER
 RACHEL WHITEREAD

COMPOSITION ALUMINIUM ARMATURE
 WOOL SATEEN, LEATHER OR SUEDE

A P P A R A T U S



AGED BRASS / BLACK WOOL SATEEN

A P P A R A T U S



AGED BRASS / SEPIA LEATHER

A P P A R A T U S

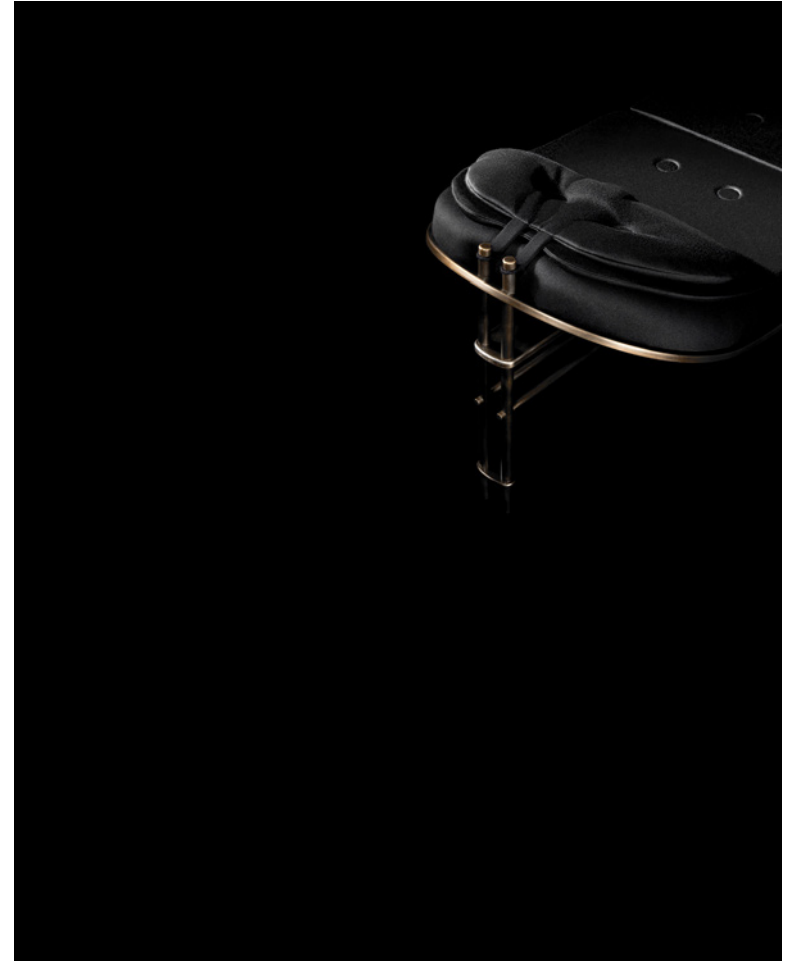


AGED BRASS / SEPIA LEATHER

A P P A R A T U S



TARNISHED SILVER / SKY LEATHER



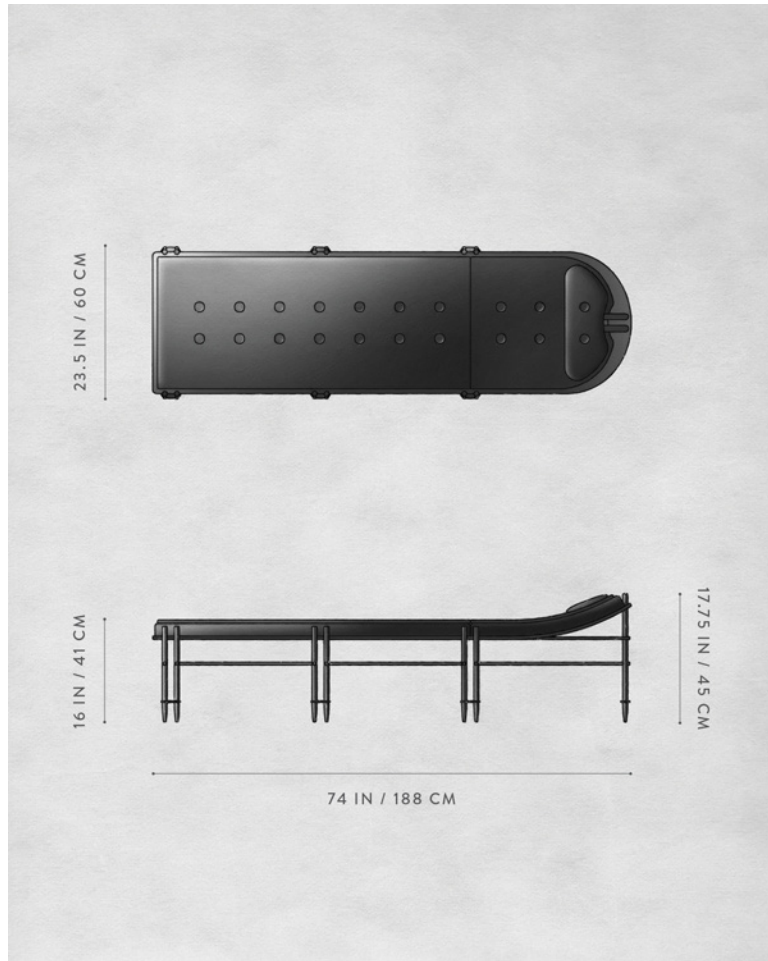
AGED BRASS / BLACK WOOL SATEEN

A P P A R A T U S



TARNISHED SILVER / BLACK WOOL SATEEN

A P P A R A T U S



DIMENSIONS

EPISODE : CHAISE
16 H, 74 W, 23.5 D IN
41 H, 188 W, 60 D CM

PRICE

£18050 / FABRIC
£21300 / SUEDE
£23650 / LEATHER

DEPOSIT BALANCE LEAD TIME

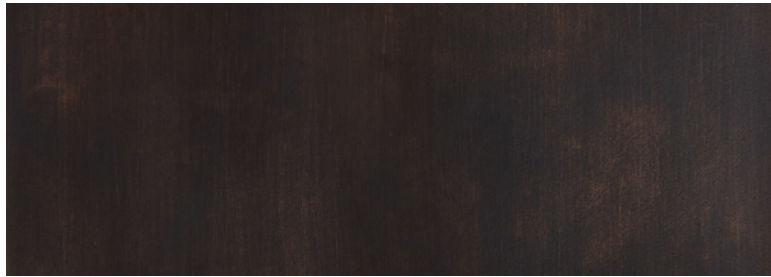
50% UPON ORDER
DUE PRIOR TO SHIPPING
PLEASE REFER TO WEBSITE

FINISHED AND ASSEMBLED BY HAND IN CA
DOMESTIC AND IMPORTED COMPONENTS

A P P A R A T U S



AGED BRASS



OIL-RUBBED BRONZE



TARNISHED SILVER

METAL

EPISODE : CHAISE

AGED BRASS [LACQUERED]

OIL-RUBBED BRONZE [LACQUERED]

TARNISHED SILVER [LACQUERED]

A P P A R A T U S



IVORY



FAWN



TAUPE



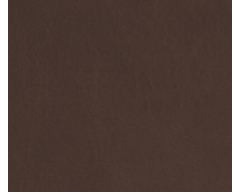
COGNAC



SEPIA



CAROB



UMBER



JUNIPER



SLATE



BLACK



SKY

LEATHER

EPISODE : CHAISE

IVORY
FAWN
TAUPE
COGNAC
SEPIA
CAROB
UMBER
JUNIPER
SLATE
BLACK
SKY

A P P A R A T U S



POWDER



FOG



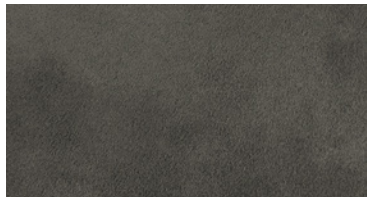
BRONZE



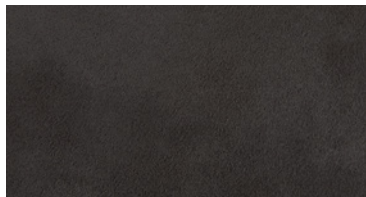
SAGE



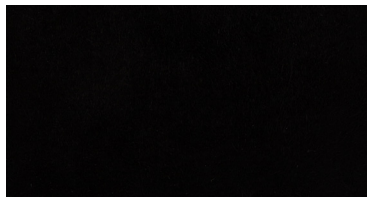
RUST



GRAPHITE



CHARCOAL



BLACK

SUEDE

EPISODE : CHAISE

POWDER
FOG
BRONZE
SAGE
RUST
GRAPHITE
CHARCOAL
BLACK

A P P A R A T U S



POWDER



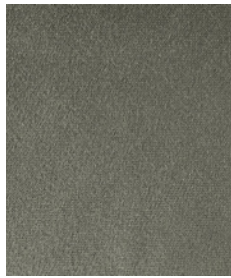
ICE



BRONZE



TAUPE



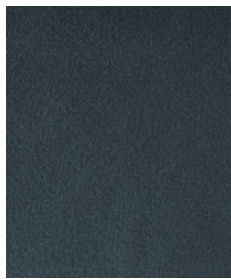
SILT



OLIVE



TOBACCO



CADET



BLACK

WOOL SATEEN

EPISODE : CHAISE

- POWDER
- ICE
- BRONZE
- TAUPE
- SILT
- OLIVE
- TOBACCO
- CADET
- BLACK