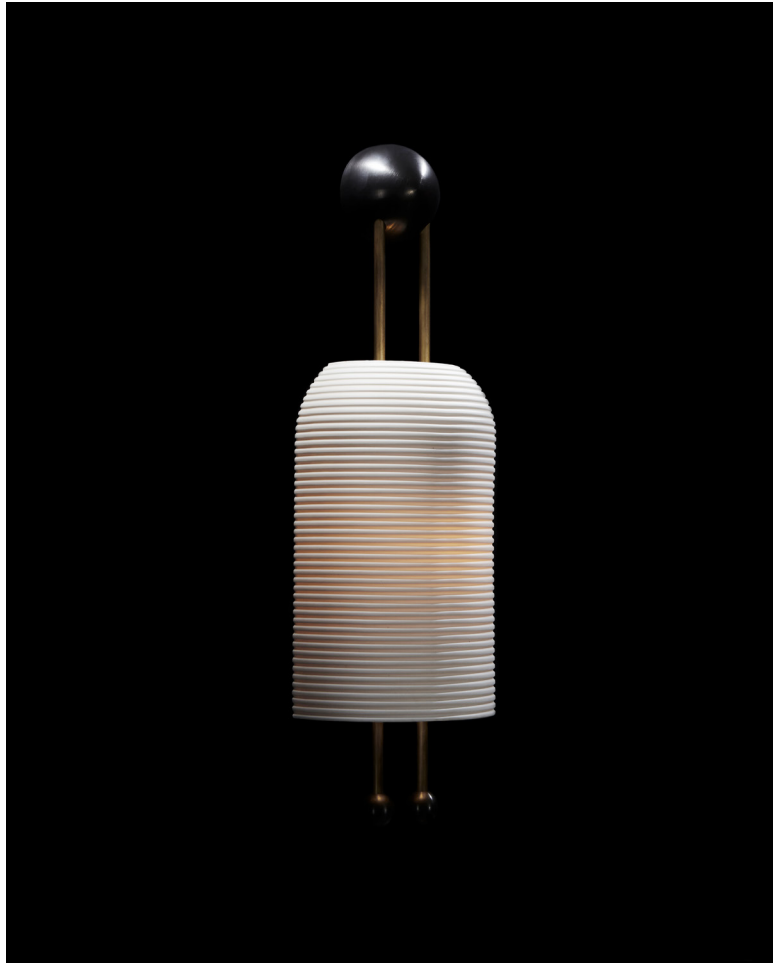


# A P P A R A T U S



TWO TONE | AGED BRASS / BLACKENED BRASS

## LANTERN : SCONCE

### REFERENCE

FRITZ LANG'S METROPOLIS  
CHŌCHIN  
WIENER WERKSTATTE

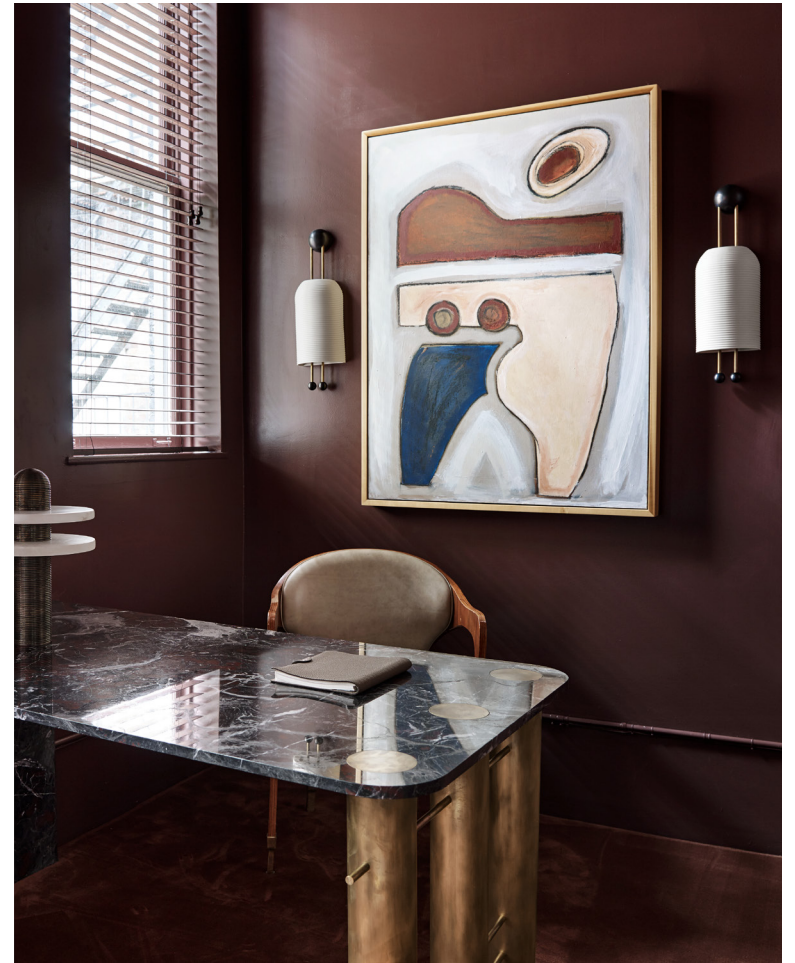
### COMPOSITION

SLIP-CAST, FLUTED PORCELAIN SHADE  
BRASS ARMATURE

A P P A R A T U S

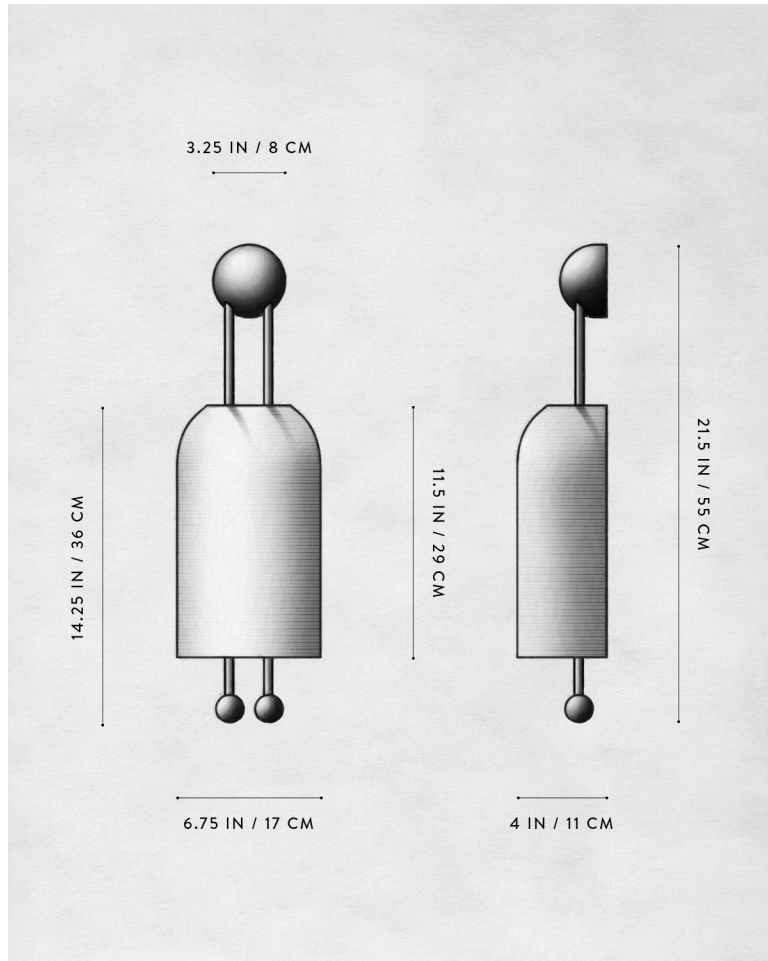


AGED BRASS / BLACKENED BRASS



AGED BRASS / BLACKENED BRASS

# A P P A R A T U S



## LANTERN : SCONCE

DIMENSIONS	21.5 H, 6.75 W, 4 D IN 55 H, 17 W, 11 D CM
WEIGHT	APROX. 5 LBS / 2 KG
PRICE	FROM £4250
VOLTAGE	120-240 UL / CE
LAMPING	MAX 40W
BULB INCLUDED	3.8W DIMMABLE LED BULB 220 LUMENS EACH 2000 - 2800K 120V : E12 SPHERE I : MATTE WHITE 240V : E14 SPHERE I : MATTE WHITE
BULB LIFE	15,000 HOURS
DEPOSIT	50% UPON ORDER
BALANCE	PRIOR TO SHIPPING
LEAD TIME	PLEASE REFER TO WEBSITE

FINISHED AND ASSEMBLED BY HAND IN NY  
DOMESTIC AND IMPORTED COMPONENTS

# A P P A R A T U S



AGED BRASS



OIL-RUBBED BRONZE



BLACKENED BRASS



TARNISHED SILVER

METAL

LANTERN : SCONCE

AGED BRASS [WAXED]

OIL-RUBBED BRONZE [WAXED]

BLACKENED BRASS [WAXED]

TARNISHED SILVER [LACQUERED] ADD 35%