

# A P P A R A T U S



MEDIUM, TARNISHED SILVER / CANE LEATHER

## REPRISE : CEILING EXTENDED

REFERENCE      JOE COLOMBO, KD 27  
BOOM MICROPHONES  
LUGGAGE CRAFT

COMPOSITION      MOLD-BLOWN GLASS  
BRASS ARMATURE  
HAND-WRAPPED LEATHER OR SUEDE

A P P A R A T U S



TARNISHED SILVER / CANE LEATHER



MEDIUM, TARNISHED SILVER / CANE LEATHER

A P P A R A T U S



AGED BRASS / SEPIA SUEDE

A P P A R A T U S



SMALL, OIL-RUBBED BRONZE / JUNIPER SUEDE



SMALL, OIL-RUBBED BRONZE / JUNIPER SUEDE

# A P P A R A T U S



REPRISE : CEILING EXTENDED LARGE

|               |  |
|---------------|--|
| DIMENSIONS    | 19.75 H, Ø 20.5 IN<br>50 H, Ø 52 CM  |
| WEIGHT        | APPROX. 74 LBS / 34 KG   |
| PRICE         | FROM £14800  |
| VOLTAGE       | 120-240<br>ETL / CB / CE / SAA / KC / UKCA / CCC PENDING   |
| LAMPING       | MAX 25W  |
| BULB INCLUDED | 6W DIMMABLE LED BULB<br>480 LUMENS<br>2000-2800K<br>120V : E26 SPHERE II : MATTE WHITE<br>240V : E27 SPHERE II : MATTE WHITE |
| BULB LIFE     | 15,000 HOURS   |
| DEPOSIT       | 50% UPON ORDER   |
| BALANCE       | DUE PRIOR TO SHIPPING  |
| LEAD TIME     | PLEASE REFER TO WEBSITE  |

FINISHED AND ASSEMBLED BY HAND IN NY  
DOMESTIC AND IMPORTED COMPONENTS



# A P P A R A T U S

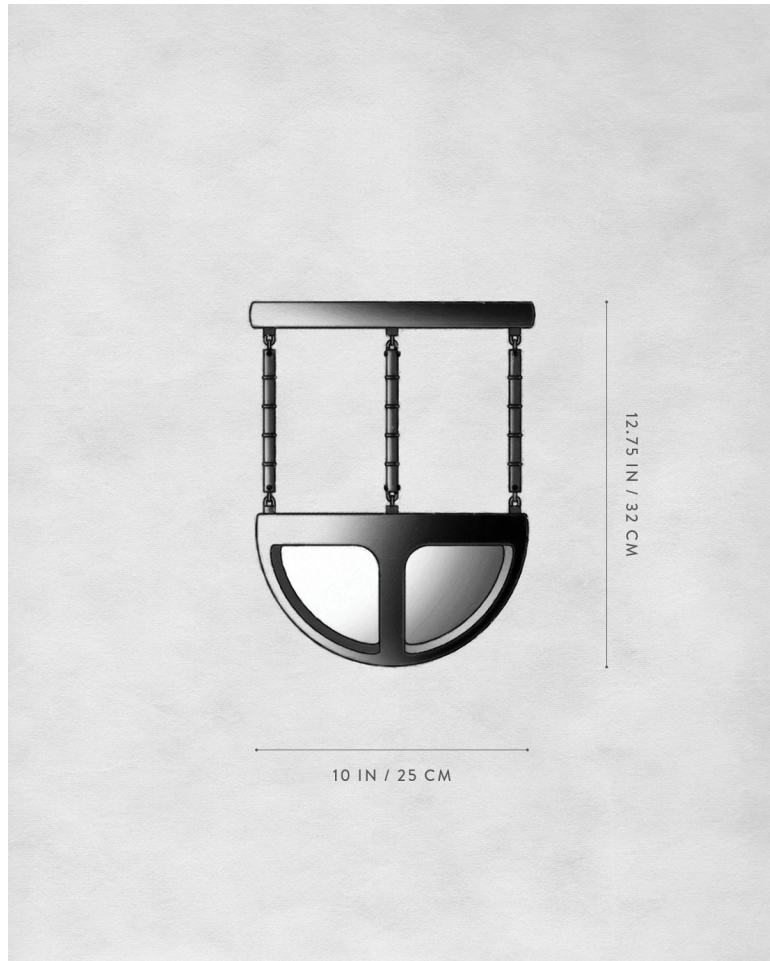


REPRISE : CEILING EXTENDED MEDIUM

|               |  |
|---------------|--|
| DIMENSIONS    | 16.25 H, Ø 15.25 IN<br>41 H, Ø 39 CM   |
| WEIGHT        | APPROX. 47 LBS / 21 KG   |
| PRICE         | FROM £12500  |
| VOLTAGE       | 120-240<br>ETL / CB / CE / SAA / KC / UKCA / CCC PENDING   |
| LAMPING       | MAX 25W  |
| BULB INCLUDED | 6W DIMMABLE LED BULB<br>480 LUMENS<br>2000-2800K<br>120V : E26 SPHERE II : MATTE WHITE<br>240V : E27 SPHERE II : MATTE WHITE |
| BULB LIFE     | 15,000 HOURS   |
| DEPOSIT       | 50% UPON ORDER   |
| BALANCE       | DUE PRIOR TO SHIPPING  |
| LEAD TIME     | PLEASE REFER TO WEBSITE  |

FINISHED AND ASSEMBLED BY HAND IN NY  
DOMESTIC AND IMPORTED COMPONENTS

# A P P A R A T U S



REPRISE : CEILING EXTENDED SMALL

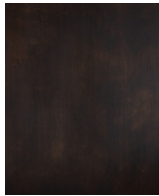
|               |   |
|---------------|---|
| DIMENSIONS    | 12.75 H, Ø 10 IN<br>32 H, Ø 25 CM   |
| WEIGHT        | APPROX. 16 LBS / 7 KG   |
| PRICE         | FROM £9050  |
| VOLTAGE       | 120-240<br>ETL / CB / CE / SAA / KC / UKCA / CCC PENDING  |
| LAMPING       | MAX 25W   |
| BULB INCLUDED | 120V : G9<br>5W DIMMABLE LED BULB<br>450 LUMENS<br>1800-2700K<br>240V : G9<br>3.6W DIMMABLE LED BULB<br>360 LUMENS<br>2700K |
| BULB LIFE     | 15,000 HOURS  |
| DEPOSIT       | 50% UPON ORDER  |
| BALANCE       | DUE PRIOR TO SHIPPING   |
| LEAD TIME     | PLEASE REFER TO WEBSITE   |

FINISHED AND ASSEMBLED BY HAND IN NY  
DOMESTIC AND IMPORTED COMPONENTS

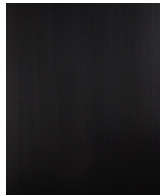
# A P P A R A T U S



AGED BRASS



OIL-RUBBED BRONZE



BLACKENED BRASS



TARNISHED SILVER



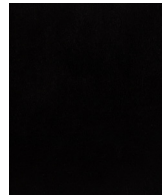
LEATHER - CANE



LEATHER - SADDLE



LEATHER - TAUPE



LEATHER - BLACK



SUEDE - ICE



SUEDE - PEWTER



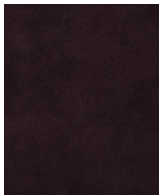
SUEDE - BRONZE



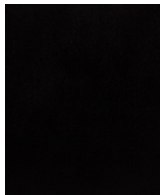
SUEDE - SEPIA



SUEDE - JUNIPER



SUEDE - PLUM



SUEDE - BLACK

METAL

LEATHER

SUEDE

REPRISE : CEILING EXTENDED

AGED BRASS [WAXED]

OIL-RUBBED BRONZE [WAXED]

BLACKENED BRASS [WAXED]

TARNISHED SILVER [LACQUERED] ADD 35%

CANE

SADDLE

TAUPE

BLACK

ICE

PEWTER

BRONZE

SEPIA

JUNIPER

PLUM

BLACK