

# A P P A R A T U S



TARNISHED SILVER

## TRAPEZE : 5 MOBILE

### REFERENCE

MOLECULAR GEOMETRY  
CAPTURED STATES OF MOTION

### COMPOSITION

SPHERES AND LINE SEGMENTS  
FIXED AND MOVABLE ELEMENTS  
BRASS OR HAND-CAST PORCELAIN BOWLS

A P P A R A T U S

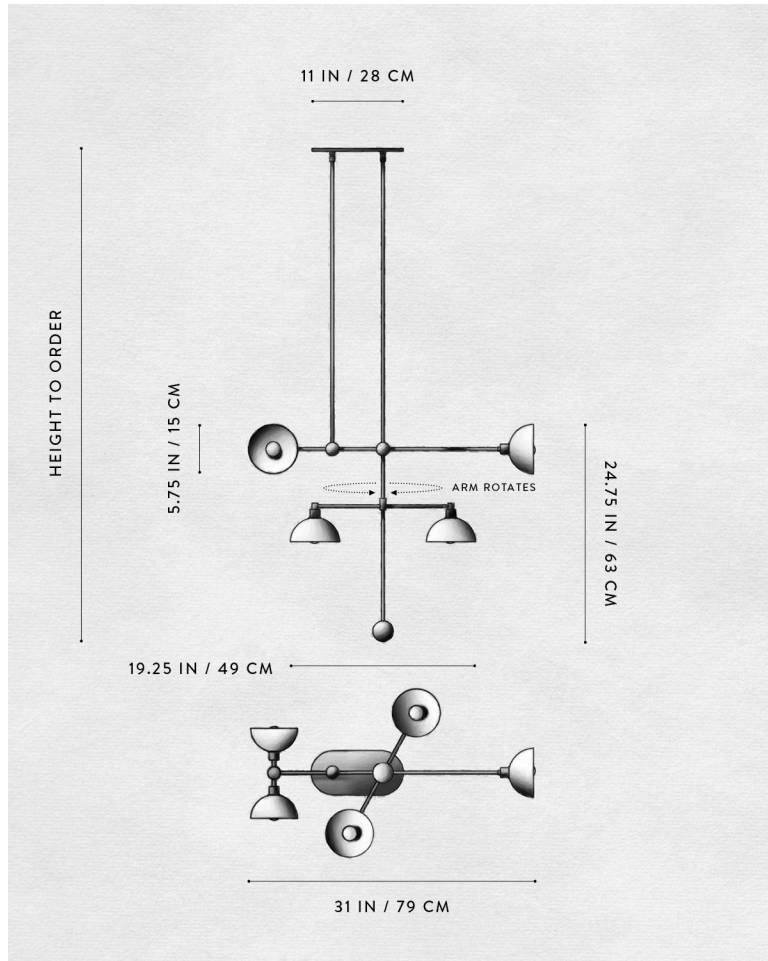


TARNISHED SILVER



AGED BRASS / PORCELAIN

# A P P A R A T U S



## TRAPEZE : 5 MOBILE

### DIMENSIONS

31 W, 11 D IN

79 W, 28 D CM

### WEIGHT

HEIGHT TO ORDER

APPROX. 15 LBS / 7 KG

### PRICE

FROM £7650 BRASS

FROM £8150 PORCELAIN OR TWO-TONE BOWL

TWO-TONE IS AGED BRASS BOWL INTERIOR

WITH BLACKENED BRASS BOWL EXTERIOR

### MINIMUM HEIGHT

36 IN

### INCLUDES

60 IN

### ADD HEIGHT

£20 / IN

### VOLTAGE

120-240

UL / CE

### LAMPING

MAX 40W

### BULB INCLUDED

5 X 3.8W DIMMABLE LED BULB

220 LUMENS EACH

2500K

120V : E12 SPHERE I : MATTE WHITE

240V : E14 SPHERE I : MATTE WHITE

### BULB LIFE

15,000 HOURS

### DEPOSIT

50% UPON ORDER

### BALANCE

DUE PRIOR TO SHIPPING

### LEAD TIME

PLEASE REFER TO WEBSITE

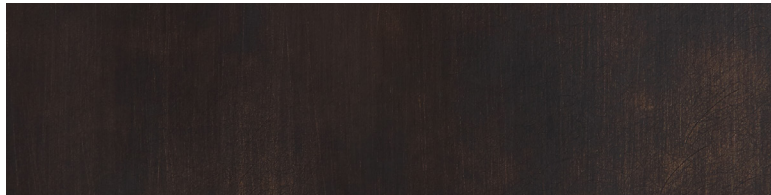
FINISHED AND ASSEMBLED BY HAND IN NY

DOMESTIC AND IMPORTED COMPONENTS

# A P P A R A T U S



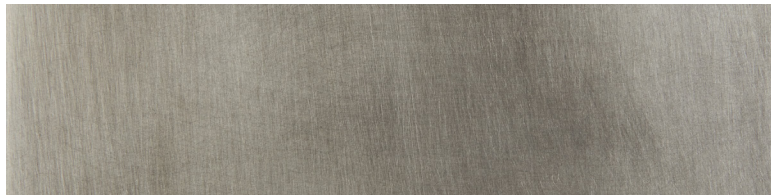
AGED BRASS



OIL-RUBBED BRONZE



BLACKENED BRASS



TARNISHED SILVER

METAL

TRAPEZE : 5 MOBILE

AGED BRASS [WAXED]

OIL-RUBBED BRONZE [WAXED]

BLACKENED BRASS [WAXED]

TARNISHED SILVER [LACQUERED] ADD 35%