

A P P A R A T U S



TARNISHED SILVER / SKY LEATHER

EPISODE : SETTEE

REFERENCE ROSIE THE ROBOT
 LUNAR ROVER
 RACHEL WHITEREAD

COMPOSITION ALUMINIUM ARMATURE
 WOOL SATEEN, LEATHER OR SUEDE

A P P A R A T U S



TARNISHED SILVER / SKY LEATHER

A P P A R A T U S



AGED BRASS / JUNIPER LEATHER

A P P A R A T U S



TARNISHED SILVER / SKY LEATHER



AGED BRASS / CADET WOOL SATEEN

A P P A R A T U S



TARNISHED SILVER / POWDER SUEDE



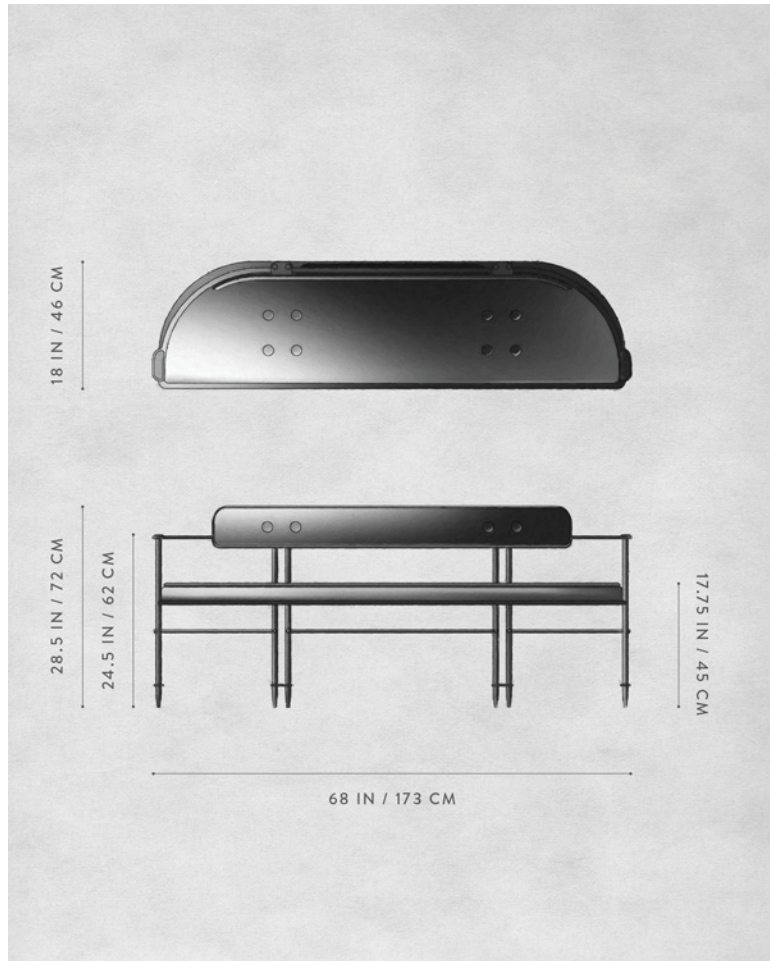
AGED BRASS / JUNIPER LEATHER

A P P A R A T U S



AGED BRASS / CADET WOOL SATEEN

A P P A R A T U S



DIMENSIONS

EPISODE : SETTEE

28.5 H, 68 W, 18 D IN
72 H, 173 W, 46 D CM

PRICE

£20450 / FABRIC
£23650 / SUEDE
£25800 / LEATHER

DEPOSIT
BALANCE
LEAD TIME

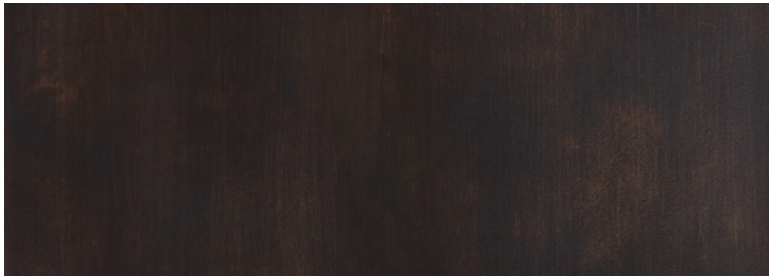
50% UPON ORDER
DUE PRIOR TO SHIPPING
PLEASE REFER TO WEBSITE

FINISHED AND ASSEMBLED BY HAND IN CA
DOMESTIC AND IMPORTED COMPONENTS

A P P A R A T U S



AGED BRASS



OIL-RUBBED BRONZE



TARNISHED SILVER

METAL

EPISODE : SETTEE

AGED BRASS [LACQUERED]

OIL-RUBBED BRONZE [LACQUERED]

TARNISHED SILVER [LACQUERED]

A P P A R A T U S



IVORY



FAWN



TAUPE



COGNAC



SEPIA



CAROB



UMBER



JUNIPER



SLATE



BLACK



SKY

LEATHER

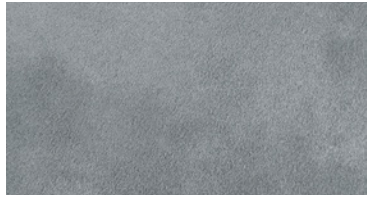
EPISODE : SETTEE

IVORY
FAWN
TAUPE
COGNAC
SEPIA
CAROB
UMBER
JUNIPER
SLATE
BLACK
SKY

A P P A R A T U S



POWDER



FOG



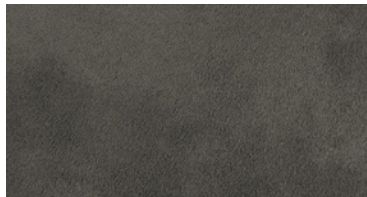
BRONZE



SAGE



RUST



GRAPHITE



CHARCOAL



BLACK

SUEDE

EPISODE : SETTEE

POWDER
FOG
BRONZE
SAGE
RUST
GRAPHITE
CHARCOAL
BLACK

A P P A R A T U S



POWDER



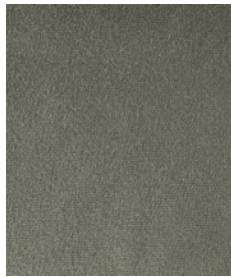
ICE



BRONZE



TAUPE



SILT



OLIVE



TOBACCO



CADET



BLACK

WOOL SATEEN

EPISODE : SETTEE

- POWDER
- ICE
- BRONZE
- TAUPE
- SILT
- OLIVE
- TOBACCO
- CADET
- BLACK