

# A P P A R A T U S



BLACKENED BRASS / BLACK LEATHER

## CYLINDER : READING SCONCE

### REFERENCE

PROPORTION VERSUS UTILITY  
WALTER DE MARIA

### COMPOSITION

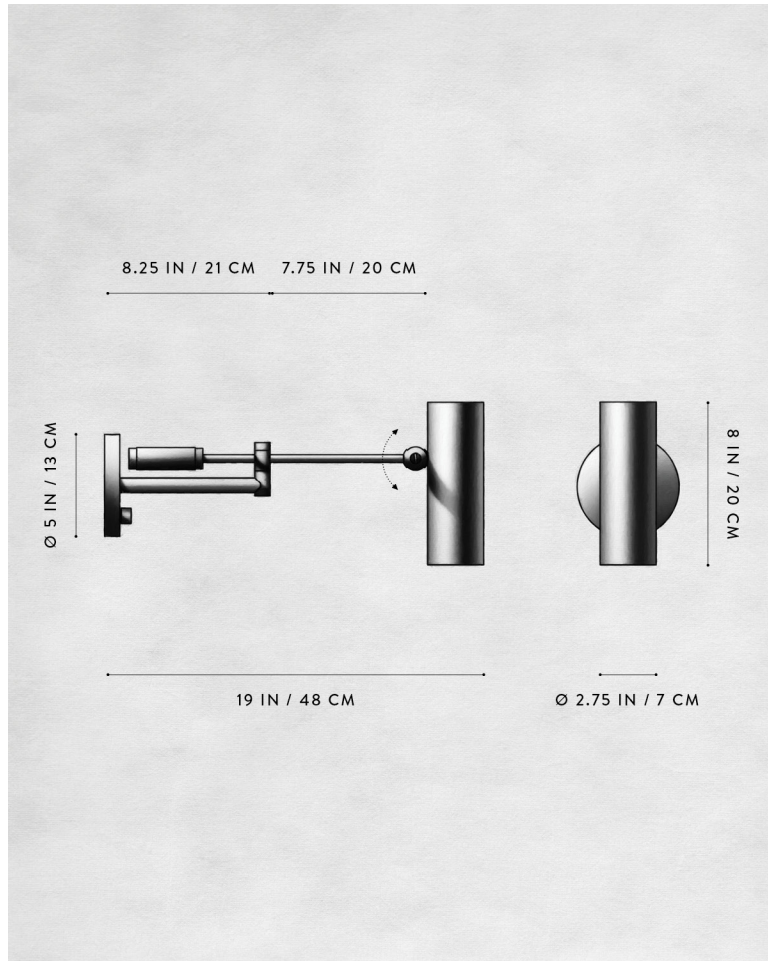
FUNCTIONAL, DIRECTIONAL LIGHTING  
MECHANICAL JOINT  
PRIMARY OR SECONDARY LIGHT SOURCE

A P P A R A T U S



AGED BRASS

# A P P A R A T U S



## CYLINDER : READING SCONCE

### DIMENSIONS

8 H, 5 W, 19 D IN

### WEIGHT

20 H, 13 W, 48 D CM  
APPROX. 5 LBS / 2 KG

### PRICE

FROM £2400  
FROM £2700 WITH EXTERNAL MOUNT KIT

### VOLTAGE

120-240  
UL / CE

### LAMPING BULB INCLUDED

MAX 25W  
DIMMABLE LED BULB  
2200K-2700K WARM DIM  
500 LUMENS  
120V : PAR20 BULB, 5.5W  
240V : PAR20 BULB, 7W

### BULB LIFE

30,000 HOURS

### DEPOSIT

50% UPON ORDER

### BALANCE

PRIOR TO SHIPPING

### LEAD TIME

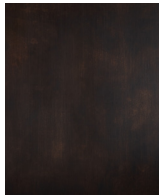
PLEASE REFER TO WEBSITE

FINISHED AND ASSEMBLED BY HAND IN NY  
DOMESTIC AND IMPORTED COMPONENTS

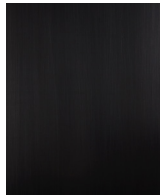
# A P P A R A T U S



AGED BRASS



OIL-RUBBED BRONZE



BLACKENED BRASS



TARNISHED SILVER



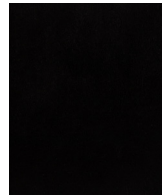
LEATHER - CANE



LEATHER - SADDLE



LEATHER - TAUPE



LEATHER - BLACK



SUEDE - ICE



SUEDE - PEWTER



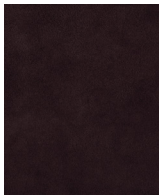
SUEDE - BRONZE



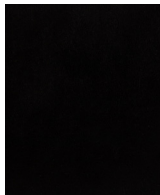
SUEDE - SEPIA



SUEDE - JUNIPER



SUEDE - PLUM



SUEDE - BLACK

METAL

LEATHER

SUEDE

CYLINDER : READING SCONCE

AGED BRASS [WAXED]  
 OIL-RUBBED BRONZE [WAXED]  
 BLACKENED BRASS [WAXED]  
 TARNISHED SILVER [LACQUERED] ADD 35%

CANE  
 SADDLE  
 TAUPE  
 BLACK

ICE  
 PEWTER  
 BRONZE  
 SEPIA  
 JUNIPER  
 PLUM  
 BLACK