

A P P A R A T U S



AGED BRASS / BLACK SUEDE

METRONOME : READING LAMP

REFERENCE

STRAVINSKY
COUNTERPOINT
VILLA MULLER

COMPOSITION

HAND-WRAPPED LEATHER OR SUEDE BASE
BRASS ARMATURE AND SHADE

A P P A R A T U S

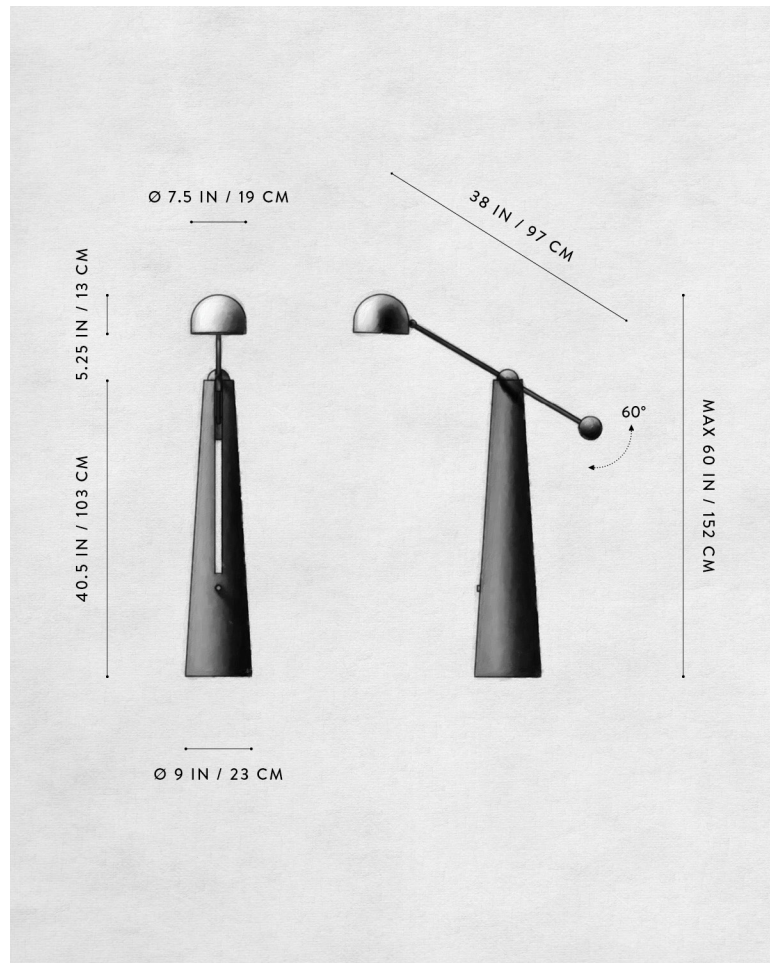


AGED BRASS / PEWTER SUEDE



AGED BRASS / BRONZE SUEDE

A P P A R A T U S



METRONOME : READING LAMP

DIMENSIONS

44-60 H, ROTATING ARM 38 L IN
112-152 H, ROTATING ARM 97 L CM

PRICE

FROM £9900

VOLTAGE

120-240

UL

LAMPING

MAX 40W

BULB INCLUDED

3.8W DIMMABLE LED BULB

220 LUMENS

2000-2800K

120V : E26 SPHERE I : MATTE WHITE

240V : E27 SPHERE I : MATTE WHITE

15,000 HOURS

BULB LIFE

50% UPON ORDER

DEPOSIT

DUE PRIOR TO SHIPPING

BALANCE

PLEASE REFER TO WEBSITE

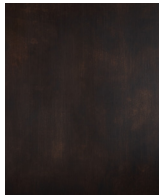
LEAD TIME

FINISHED AND ASSEMBLED BY HAND IN NY
DOMESTIC AND IMPORTED COMPONENTS

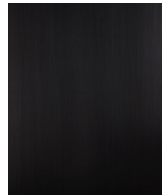
A P P A R A T U S



AGED BRASS



OIL-RUBBED BRONZE



BLACKENED BRASS



TARNISHED SILVER



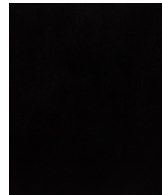
LEATHER - CANE



LEATHER - SADDLE



LEATHER - TAUPE



LEATHER - BLACK



SUEDE - ICE



SUEDE - PEWTER



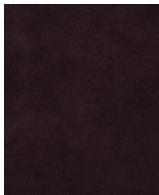
SUEDE - BRONZE



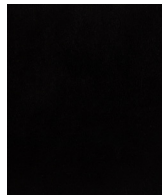
SUEDE - SEPIA



SUEDE - JUNIPER



SUEDE - PLUM



SUEDE - BLACK

METAL

LEATHER

SUEDE

METRONOME : READING LAMP

AGED BRASS [WAXED]
 OIL-RUBBED BRONZE [WAXED]
 BLACKENED BRASS [WAXED]
 TARNISHED SILVER [LACQUERED] ADD 35%

CANE
 SADDLE
 TAUPE
 BLACK

ICE
 PEWTER
 BRONZE
 SEPIA
 JUNIPER
 PLUM
 BLACK