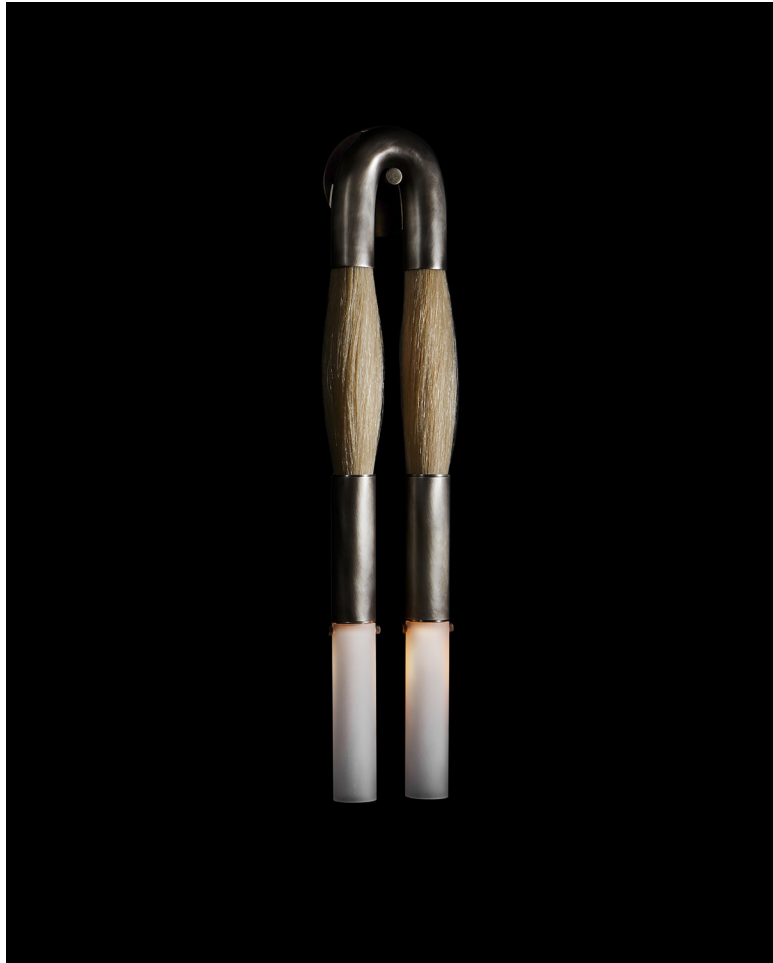


A P P A R A T U S



TARNISHED SILVER / PALOMINO HORSEHAIR

HORSEHAIR : SCONCE

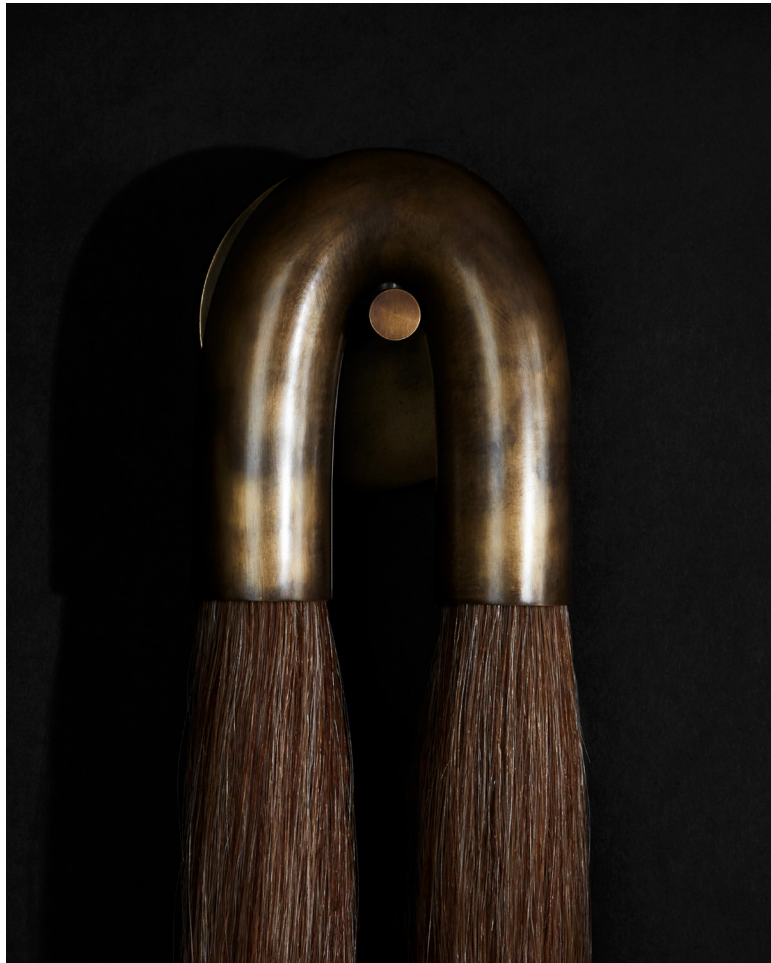
REFERENCE

THE SENSUAL VERSUS THE MACHINE MADE
HORSES BY STEVEN KLEIN
RIDING TACK

COMPOSITION

WEFTS OF HORSEHAIR IMPLY STRUCTURAL FUNCTION
BRASS FORM CAST TO APPEAR DRAPED OVER A PEG

A P P A R A T U S

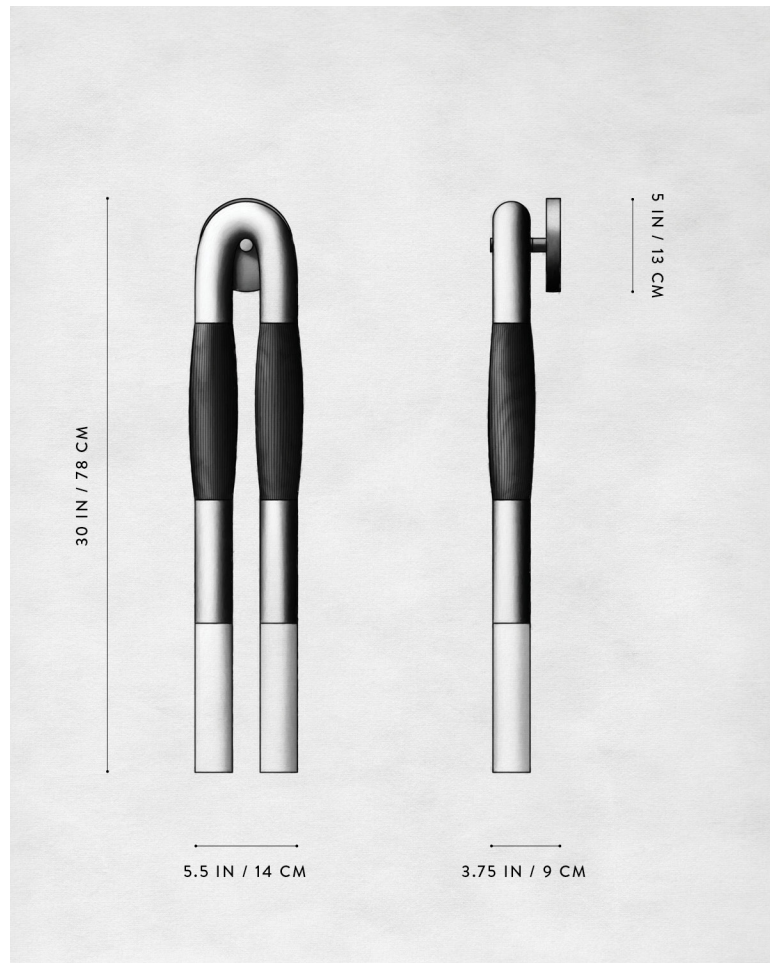


OIL-RUBBED BRONZE / FLAXEN HORSEHAIR



OIL-RUBBED BRONZE / PALOMINO HORSEHAIR

A P P A R A T U S



HORSEHAIR : SCONCE

DIMENSIONS

30 H, 5.5 W, 3.75 D IN

WEIGHT

78 H, 14 W, 9 D CM

PRICE

APPROX. 10 LBS / 5 KG

VOLTAGE

FROM \$7000 PALOMINO OR JET BLACK
FROM \$7800 FLAXEN - LIMITED EDITION

LAMPING

120-240

UL / CE

BULB INCLUDED

MAX 25W

2 X 3W DIMMABLE LED BULB

180 LUMENS EACH

2200K

120V : E12 TOTEM I : TINTED

240V : E14 TOTEM I : TINTED

BULB LIFE

30,000 HOURS

DEPOSIT

50% UPON ORDER

BALANCE

PRIOR TO SHIPPING

LEAD TIME

PLEASE REFER TO WEBSITE

FINISHED AND ASSEMBLED BY HAND IN NY
DOMESTIC AND IMPORTED COMPONENTS

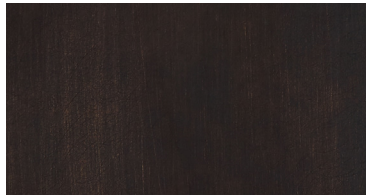
A P P A R A T U S



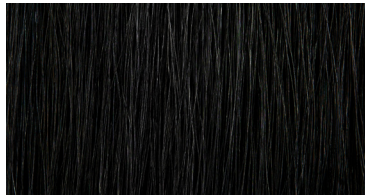
AGED BRASS



HORSEHAIR - PALOMINO



OIL-RUBBED BRONZE



HORSEHAIR - JET BLACK



BLACKENED BRASS



HORSEHAIR - FLAXEN



TARNISHED SILVER

METAL

HORSEHAIR

HORSEHAIR : SCONCE

AGED BRASS [WAXED]

OIL-RUBBED BRONZE [WAXED]

BLACKENED BRASS [WAXED]

TARNISHED SILVER [LACQUERED] ADD 35%

PALOMINO

JET BLACK

FLAXEN