



REAL GAMING TAKES THE STAGE!

TRONE

RGB GAMING MOUSE

Adjustable DPI | Multifunctional Keys



Pre-Programmed
Buttons



Breathing
RGB LED

USER MANUAL

Welcome

Thank you for purchasing the Ambrane Trone mouse. We recommend you to read the instruction manual carefully before using the product.

Package Contents

- 1 N Ambrane Trone Mouse
- 1 N Rating Card
- 1 N User Manual Scan Card

Product Overview

Ambrane Trone Gaming Mouse is equipped with advanced gaming features and 3 adjustable DPI levels. You may switch up to 3200 DPI as per your requirements. Trone is the perfect gaming mouse with high quality and 7 colour breathing lights. It comes with a highly accurate positioning chip that provides less response time, allowing you to play your optimum. With wide compatibility, ergonomic design and a long braided wire, it is built especially for gamers. So, pick up your Trone and conquer each game you play!

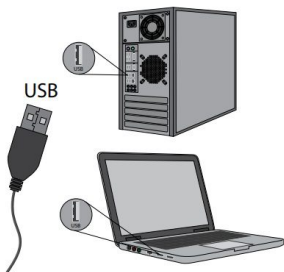


Product Specifications

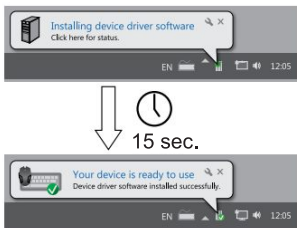
- Wired Gaming Mouse
- Adjustable DPI: 1200/2400/3600
- 7 Colour Breathing Lights
- 7 Pre-Programmed Keys
- Polling Rate: 125 Hz
- Response Time: 8ms
- 1.5m long Copper Braided Wire
- USB 2.0 Compatibility
- Ergonomic Design
- High Precision Optical Sensor
- Weight: 120 Gms
- Product Size: 130*70*40 mm

How to Use

1. Connect the mouse to an available USB port on your computer.



2. When connecting for the first time, wait for around 15 seconds until the generic driver is installed.
3. The mouse installation is now complete.



Compatibility

This mouse is compatible with USB-enabled MAC and Windows models.

How to Switch DPI

Click on the DPI button to switch between 3 DPI levels: 1200/2400/3600.

FAQ

- If the mouse is not responding, please check whether the mouse is plugged correctly into the corresponding computer's USB port, or try another USB port.
- Make sure the device is compatible with your operating system.
- If the mouse is moving slowly, jumping or with delay, please try another surface. Dark, dirty, un-flat, bright surfaces may affect the performance of the mouse. A mouse pad is strongly recommended.
- If the problem persists, please contact customer support for assistance.

CAUTION

1. Keep the equipment dry. Keep away from precipitation, humidity, all types of liquids and condensation.
2. Do not use the product with wet hands.
3. Do not use or store the equipment in dusty or dirty areas.
4. Do not store the equipment under high-temperature or low-temperature conditions as this may damage it.
5. Do not drop, knock, or shake the equipment as it may damage it.

Warranty Card and Terms & Conditions

- All warranty information, product features and specifications are subject to change without prior notice.
- All matters are subject to Delhi Jurisdiction.
- Ambrane Trone comes with 180 days warranty from the date of purchase.

Note: Any damage caused by physical impact, Water/liquid, fire etc caused by customer or nature shall not be covered under warranty. Only product design, feature and functionality related faults will be considered.

CUSTOMER CARE:

224, Second Floor, D-Mall, Netaji Subhash Place,
Pitampura, Delhi, India - 110034

Contact No.: +911145911111,

E-mail: care@ambraneindia.com,

Web: www.ambraneindia.com

Join the Ambrane Ally!

@ambraneindia

