



## WELCOME

Thank you for choosing AMBRANE Power Bank, please read the instructions carefully to know more about the functions and operations. If you face any kind of problem with our product, do not hesitate to contact us on our customer care helpline number +91 1145911111 (Monday to Saturday - 10:00 AM to 6:00 PM, Work off on Sunday) or email your complaint/ query at care@ambraneindia.com. Our executive will get in touch with you.

We believe in customer satisfaction.

We'd really appreciate if you Rate us at those e-commerce portals from where you have purchased our product as your 5 star rating will encourage us to create more innovative & quality products in future. To serve you better, we have more than 400 service centers across India. For further details please log on to [www.ambraneindia.com](http://www.ambraneindia.com).

## FEATURES

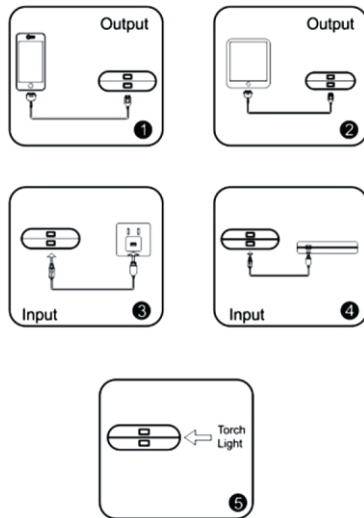
Intelligent single chip controls the power bank to avoid over-charging, over discharging and short circuit.

## USAGE

Power bank charges the digital devices such as Mobile Phones, Tablets and Bluetooth Speaker etc.

1. Connect the power bank properly with digital products via respective supported cables.
2. Press the power switch and the power bank will start charging the digital devices. Some models don't require button operation, just plug in and charging will start.
3. When charging is completed, unplug the charging cable, power bank supply will automatically shut down in max. 5-15 minutes (The models without intelligence control need to be manually shut).
4. Some Power banks have torch feature, To turn ON the

LED torch simply press the power button twice/Long press. 5. Charge your power bank at room temperature between 0°C - 40°C.



## POWER BANK GUIDE

Que: What is Power Bank?

Ans: Power Bank is an 'external battery' or 'portable charger' for your smart phone.

Que: How do I charge the power bank?

Ans: You can charge your power bank via Micro USB cable with 5 Volt charger that comes with your smart phone or Computer USB.

Que: How to check power bank efficiency?

Ans: All the power banks assemble using battery cells having voltage rating of 3.7 V. The output voltage rating of power bank is 5V for charging any digital devices. Standard calculation illustrates as the efficiency of power bank is the ratio of voltage rating of battery cells with respect to the output voltage rating of power bank. i.e. Efficiency = (voltage rating of battery cells) / (output voltage rating of power bank)

Efficiency =  $3.7 / 5 = 0.74$

Efficiency (in %) =  $(3.7 / 5) * 100 = 74\%$

Therefore, we conclude that the above power bank with stipulated rating of 3.7 V for battery cells and 5 V for output is having 70% to 74% efficiency. This is the standard calculation and by using above method you can compare the efficiency of varied power banks.

Que: Which technology powers the Power Bank?

Ans: Some power Bank models have Li-ion and some Li-Polymer. Both are working on 5V and both have same procedure of charging and discharging. In Li-ion power bank contains Cells and in Polymer power bank contains batteries. Also written on the Box

Que: What is difference between Li-ion and Li-Polymer?

Ans: Both Li-Ion and Polymer works on same fundamentals and parameters but polymers are compact in size, Light weighted as compared to Li-ion power banks and both have high power density.

Que: Which USB cable should I use to charge my smart phone with this power bank?

Ans: Our entire range of power bank comes with a relative USB cable therefore you can use the same for charging your smart phone. We should prefer the shortest cable especially the cable inside the box is having the length of 30cm. We sometimes use data cables for charging, the same should be avoided.

Que: How much time does it take to charge the power bank?

Ans: The time taken to charge our power bank is purely based upon, How you charge it from various USB sources whether its laptop, desktop or PLUG IN chargers. We should prefer charging through AC Adapter (Plug In) which gives

you better output and also input parameters (V & I) are written on the power bank.

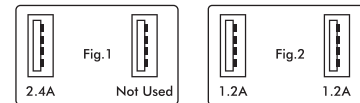
Que: How many input and output ports in the power Bank?

Ans: Ports are varying according to models. Minimum Output port is one and maximum can go up-to two or more output ports (Standard Type-A USB 2.0). All of the power banks series have Micro USB 2.0 port for input.

**Note:** Also Some Models have Type C and Lighting (Apple phone) connector for input and output. Specifications are written on the Box as per different models.

## NOTICE

- This product is equipped with short circuit, High temperature and current limit protection. If external short circuit or the charging load exceeds the maximum current, the protection function automatically starts and shuts down output.
  - Some USB data cable or the USB charging cable, that are not compatible with the power bank and can't be used should be avoided, Instead choose or to purchase the charging cable of the same brand.
  - When power bank can't charge digital products, please check the charging cable and connectors, whether connected properly or change the cable. After digital devices are fully charged, please unplug the charging cable timely to avoid power loss.
  - Because of high charge and discharge current, please choose good quality charging cable and connectors.
  - Please make sure the power bank is fully charged when using for the first time. Make sure that the product is fully charged at least once in two or three months.
  - Prolonged use will lead to fever but will not be extremely hot, which is a normal phenomenon.
  - During charging of power bank, please unplug the cable within 30mins when power bank is get fully charged else over charging will harm the cells.
  - While Using output through single port power bank delivers maximum power but if dual or more ports using at same time then power bank will divide power into two or three
- For Example:** Power Bank Maximum Current delivers 2.4A.



## CHARGING

Connect with Suitable charging source. The indicator shows charging condition as follow

Power Level	LED-1	LED-2	LED-3	LED-4
0-25%	Blinking	OFF	OFF	OFF
25-50%	ON	Blinking	Off	OFF
50-75%	ON	ON	Blinking	OFF
75-100%	ON	ON	ON	Blinking
Fully Charged	ON	ON	ON	ON
Charging Error	Blinking	Blinking	Blinking	Blinking

## DISCHARGING

Connect with device to charge your device. The indicator shows discharging conditions as follow:

Power Level	LED-1	LED-2	LED-3	LED-4
75-100%	ON	ON	ON	ON
75-50%	ON	ON	ON	OFF
50-25%	ON	ON	OFF	OFF
25-10%	ON	OFF	OFF	OFF
Below 10%	Blinking	OFF	OFF	OFF

**Note:** For QC2.0/3.0 power banks; the device has additional indicator (LED) that shows power bank is working on QC parameters during charging/discharging.

QC & PD power bank supports fast charging technology which boosts the output from 5V to 9V or 12V according to mobile phone specs. QC & PD powerbanks specs start from 18W fast charging. like:5V/3A, 9V/2A, 12V/1.5A for 18W. All the specs written on the box. This has inbuilt charging control technology which gives you better charging experience with your Smart Tablets, digital camera, and all QC & PD enable mobile phones.

**NOTE**  
For the Ambrane fast charging power banks, Kindly use the Original QC or PD adapter and USB cable to charge the power bank.

**OR**  
Use Ambrane's High Safety, Filtered Output and a BIS certified fast charging adapter which is fully compatible with QC and PD principle for charging the power bank and mobile phones.

- △WARNING AND △CAUTION**
- △Keep away from fire, water and excess temperature (>45°C) and too low temperature (<-20°C).
  - △Keep the Power Bank away from heat sources, direct sunlight, humidity, water and other liquids.
  - △Please do not remove, modify products, in order to avoid damage to the product protection and leading to fire or explosion.
  - △Do not dismantle, crush, puncture and short circuit power bank, or expose it to liquids, fire or environment where the temperature is above 55°C.
  - △Store in a cool and dry place.

- △Do not operate the Power Bank if it has been wet or damaged to prevent electric shock. Doing so may cause electric shock or fire and the battery may malfunction or explode. Don't store your device together with metal objects, such as coins, keys and necklaces.
- △Please do not throw a severe cast, hit the power bank, in order to protect products from abnormal phenomena such as sag, perforation, craze and corrosion. Please stop using the product and contact the vendors or manufacturers.
- △This power bank is not suitable for physiological and mental low individuals (including children) use.
- △The Power Bank will generate heat when charging. Use it in the well-ventilated area when charging.
- △Do not use the Power Bank with wet hands.

- △Keep the Power Bank ports free from dust, lint, etc that may prevent proper connections.
- △The Power Bank is not a toy. Keep out of reach of children.
- △Lithium-ion batteries can easily rupture, ignite, or explode when exposed to high temperatures, or direct sunlight. Do not charge under pillows or blankets. They should not be stored in a car during hot weather. Short-circuiting a Li-ion the battery can also cause it to ignite or explode. Never open a Li-ion battery's casing. Li-ion batteries contain safety devices that protect the cells inside from abuse. If damaged, these can cause the battery to ignite or explode. Do not charge the Power Bank and charge an electronic device at the same time. This will shorten the Power Bank's battery life.

△Please read the user manual carefully before using the product.

- NOTE**
- Precisely, the storage capacity Voltage of the Li-Ion Battery is 3.7V and the output of the Power Bank is 5V.
  - To analyze, you can calculate this by splitting the value of Input Value and Output Value, i.e., 3.7/5= 74%, where, 3.7 is the Input Value and 5 is Output Value.
  - Due to some wastage of power during charging, it will give output up to 65%-70% of its storage capacity.

**SCENARIO 1**  
Input Adapter/Charger Specs: 5V/0.5A  
Power Bank Capacity: 10000mAh  
Time Taken for charging: 10000/ 0.5 = 20 Hours.

**SCENARIO 2**  
Input Adapter/Charger Specs: 5V/ 1A  
Power Bank Capacity: 10000mAh  
Time Taken for charging: 10000/ 1 = 10 Hours.

**SCENARIO 3**  
Input Adapter/Charger Specs: 5V/ 1.5A  
Power Bank Capacity: 10000mAh  
Time Taken for charging 10000/ 1.5 =7 Hours

Therefore, charging time depends on the output Amp of the charger as well as depends upon the input of the power bank and the same is already mentioned on the product.  
Que: What is the lifespan of a power bank?  
Ans: Usually a proper maintained power bank can retain up to 80% - 90% of its original capacity at 300 - 500 charge and discharge cycles.  
(charge then discharge = 1 cycle).  
Que: How long your power bank will stay charged if you don't use it?  
Ans. Normally, it should last for many days. A Li-Ion battery last about 2-3 months.  
Que: What is the difference between output 1A, 2.1A, 2.4A and 3.0 and above output?  
Ans. This is a current flow difference. 1A output = 1000mA per hour and 2.1A output = 2100mA per hour and same for next. Usually 1A defines normal Charging, 2.1A to 2.4A defines Fast/Smart Charging and 3.0A defines Quick/turbo charging.

**WARRANTY CERTIFICATE**

**LIMITED WARRANTY**  
AMBRANE India provides limited warranty for your product (Portable Charger) and original accessories delivered with your product (hereinafter referred to as "Product")

**WARRANTY**  
Subject to the conditions of this Limited Warranty, warranty a product to be free from defects in design, material and workmanship at the time of its original purchase by you, & warranty period of the product is mentioned on the product MRP/Box and 180 days for battery.  
You shall have no coverage or benefits under this warranty in the event that any of the following conditions are applicable.

The product has been subjected to abnormal use or conditions, improper storage, exposure to excessive moisture or dampness, exposure to excessive temperature, unauthorized modification, Unauthorized repair including but not limited to use of unauthorized spare parts in repairs, abuse, accidents, Acts of God, spills of good or liquids, improper installation.

You have not notified of the defect in the product during the applicable warranty period.

The product serial no. code or the accessories date code has been removed, defaced or altered. The product has been used with or connected to an accessory (i) Not supplied by or its affiliates, (ii) Not fit for use with the product or (iii) Used otherwise than manner intended.

•Keep your original receipt; you will need it for warranty services if asked to produce.

•Present this Warranty Certificate along with original of purchase whenever you require any warranty services.

Incase product needs service, please visit the nearest service centers given in the service guide, Please visit our Website for updated list of Authorized Service Centers near to your location

**NOTE:** To Claim the warranty, all information on the warranty certificate should be completed along with original invoice.

•All warranty information, product features and specifications are subject to change without prior notice.

•All matters are subject to Delhi Jurisdiction.

•Keep your original receipt; you will need it for warranty services if asked to produce.

•Present this Warranty Certificate along with original of purchase whenever you require any warranty services.

Incase product needs service, please visit the nearest service centers given in the service guide, Please visit our Website for updated list of Authorized Service Centers near to your location

**NOTE:** To Claim the warranty, all information on the warranty certificate should be completed along with original invoice.

•All warranty information, product features and specifications are subject to change without prior notice.

•All matters are subject to Delhi Jurisdiction.

Customer's Name: \_\_\_\_\_  
Contact Number: \_\_\_\_\_  
Customer's Address: \_\_\_\_\_  
Model No.: \_\_\_\_\_  
Purchase Date: \_\_\_\_\_  
Invoice Number: \_\_\_\_\_  
Dealer's Stamp: \_\_\_\_\_

•Warranty can not be claimed if the product is damage by wrong operation or force majeure.

•Accessories supplied with power banks are not covered under the warranty.

**CUSTOMER CARE:**  
224, Second Floor, D-Mall,  
Netaji Subhash Place, Delhi, India - 110034  
Contact No.: +91 1145911111,  
E-mail: care@ambraneindia.com  
Web: www.ambraneindia.com

Join the Ambrane Ally!  
**@ambraneindia**

