

AMBRANE



60 Minutes
Run Time

18 Length
Settings

HAIR TRIMMER
AURA-X

USER MANUAL

Thankyou for choosing Ambrane Aura-X. Before using the product, please read the manual carefully and follow the instructions to operate the trimmer properly.

PRODUCT OVERVIEW



- | | |
|-----------------------------------|----------------------------------|
| 1. Hair Clipper | 5. Rotating comb for 0.5 – 10 mm |
| 2. Toggle Power On/ Off switch | 6. Big Adjustable Comb |
| 3. Battery Indicator | 7. Brush |
| 4. Charging Socket on the Trimmer | 8. Oil |
| | 9. USB Cable |

CHARGING

Before using the trimmer, charge it fully and make sure to charge it for at least 2 hours so that the lithium battery is fully loaded for optimum performance before first use. Please make sure that the voltage of your electricity supply is the same as that indicated on the charger. When fully charged, you can use the trimmer cordless for 60 minutes approximately.

INSTRUCTIONS

- Make sure the device is switched off while getting charged.
- Connect the USB cable to the input charger which should not be 5V/1A.
- Plug in the USB cable into a fitting mains outlet.
- The red LED indicator will flash when the device is correctly connected to the mains and the charging is in process.
- When the battery is fully charged, the green LED indicator will constantly light up.
- Once fully charged, the cordless operation time will be 60 minutes approximately.

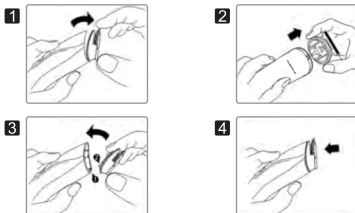
ATTACH/REMOVE BLADES

Warning: Before changing the attachment head, make sure your trimmer is switched off.

To remove an attachment head - Hold the handle of the trimmer with one hand, while holding the attachment head with the other. Pull the attachment head back and away from the front of the handle.

To attach an attachment head - The driving pin (Fig. 1-4) needs to be in a central position. If it is not in the centre, manually move the pin to the centre. Now make sure that the base of the attachment head is placed correctly onto the device. The "click" sound can be heard once attached properly.

Note - Only use the trimmer when it is disconnected from the power source.



USAGE OF COMBS

Choose the comb according to your own need. The length can be adjusted as follows

- Comb with Rotating Switch 0.5-10mm
- Big Adjustable Comb
- Place the comb on the top of the blade. At the time of placing the comb slide down along both sides then use a rotate switch to adjust length.
- Select the desired length through length setting button of comb.
- If you want to remove or replace the comb, press the comb upwards to remove it.

BATTERY CARE

For a longer rechargeable battery service life, it is recommended that the batteries are completely discharged before they are recharged. To completely discharge the battery, run the device until it comes to a complete stop.

PRODUCT SPECIFICATIONS

- Motor Voltage : DC5V
- Rating Voltage : 5V/1000 mA
- Charging Time : 2 Hours
- Discharge Time : 60 Minutes
- Capacity : 600 mAh
- Cell Type : Lithium Cell
- Output rating for unit : 5V-1A

CARE AND CLEANING

The appliance must be switched off and disconnected from the charger before cleaning.

1. Clean the blades and comb attachments with the cleaning brush (supplied) to remove remaining loose hair clippings.
2. Clean the housing of the trimmer with a soft, dry cloth.

STORAGE

- Always let the trimmer cool down fully before storing.
- After cleaning, store the trimmer, charger and all the attachments in the box provided.

SAFETY PRECAUTION

Read through these instructions carefully before using the Product. To avoid a potentially deadly electric shock and/or fire, please observe the following:

- This product can be used by aged from 18 years and above and persons with reduced physical, sensory or mental capabilities or lack of experience and knowledge if they have been given supervision or instruction concerning use of the product in a safe way and understand the hazards involved.
- Children shall not play with the product.
- Cleaning and user maintenance shall not be made by children without supervision.

- The product is only to be used with the power supply unit provided with the product.
- The supply cord cannot be replaced.
- If the cord is damaged the cord should be scrapped.
- This product is designed for domestic use only.
- Do not pull on the connection cord, but rather on the plug, to separate the product from the mains.
- Indoor use only.
- Do not leave the product unattended when it is switched on, as this may be a source of danger.
- Keep the product on a table or flat surface.
- Do not place the product on any surface when it is switched on.
- Switch off and unplug the product before cleaning or not in use.
- Do not attempt to repair or disassemble the product.
- Do not use this product if there is any damage on the product or on the power cord.
- Never use an extension cord. Plug the product directly in the electrical outlet.
- Do not bend the supply cord.
- Do not place the power cord across or near the heating source.
- The product is built with an internal rechargeable battery: do not expose the product to excessive heat such as sunshine, fire or the like.

WARNING: Keep the product dry.

WARRANTY CARD AND TERM & CONDITIONS

NOTE: To Claim the warranty, all information on the warranty certificate should be completed along with original invoice.

- All warranty information, product features and specifications are subject to change without prior notice.
- All matters are subject to Delhi Jurisdiction.

| | | | |
|--------------------|--|----------------|--|
| Customer's Name | | Contact Number | |
| Customer's Address | | | |
| Model No. | | | |
| Purchase Date | | Invoice Number | |
| Dealer's Stamp | | | |

- **Ambrane Aura-X** comes with 365 days warranty from the date of purchase.
 - Warranty can not be claimed if the product is damaged by wrong operation or force majeure.
 - Accessories supplied with the trimmer are not covered under the warranty.
-

Address: AMBRANE INDIA PVT. LTD.

Plot No. 438, Sector-53, Phase 3, EPIP, HSIIDC Industrial Estate Kundli,
Sonipat - 131028, Haryana, India

In case of complaint contact customer service for sales/service support:

Contact No.: +91 -8929700222

Web: www.ambraneindia.com, **E-mail:** care@ambraneindia.com