

# AMBRANE



## MULTI-PURPOSE GROOMING KIT

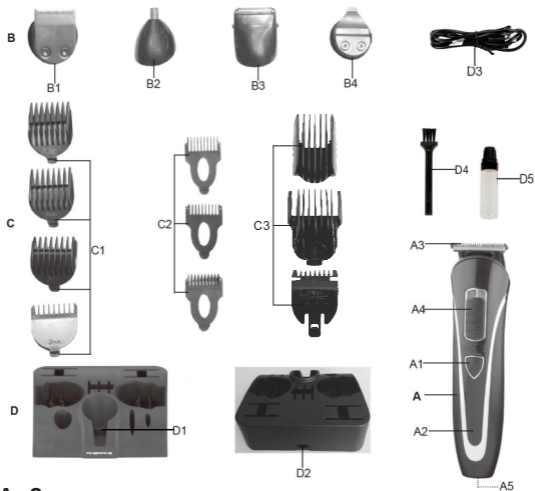
WITH 5 HEADS FOR BEARD, HAIR, NOSE, EAR & BODY GROOMING

## USER MANUAL

**CRUISER**  
GROOMING KIT  
Easy • Fast • Precise

Thank you for choosing AMBRANE Cruiser AGK-11 Grooming Kit. Before using the product, please read the manual carefully and follow the instructions to operate properly.

## PRODUCT OVERVIEW



### A - Groomer

A1: ON/OFF Switch    A2: Charging Indicator    A3: Hair Clipper (Blade)  
A4: Cutting Length Control    A5: Charging Socket on the Groomer

### B - Grooming Attachments

B1: Beard Trimmer    B2: Nose Trimmer    B3: Mini Shaver  
B4: Precision Trimmer

### C - Guide Comb Attachments

C1: 4 Guide Combs for Hair Clipper (3/6/9/12mm)  
C2: 3 Guide Combs for beard Trimmer [ I(8mm)/II(6mm)/III(4mm)]  
C3: 3 Adjustable Combs

### D - Others Attachments

D1: Charging connector of the storage case    D4: Cleaning Brush  
D2: Charging socket of the storage    D5: Lubricating Oil  
D3: Charging Cable

## CHARGING

---

Before using the charger, ensure that the voltage of your electricity supply is the same as that indicated on the charger. Your groomer contains detachable re-chargeable batteries and may be used cordless for approximately 60 minutes when the batteries are fully charged.

**IMPORTANT NOTE:** The batteries must be charged for a minimum of 2 hours for the first charge cycle.

This will ensure the maximum life for the batteries.

1. Be certain groomer is switched off.
2. Dock the groomer onto the storage case. Connect the charging connector of the charging cable (D3) to the charging socket (D2) on the back of the storage case. The socket is polarised so the charging connector must be correctly aligned. Or you can connect the charging connector of the charging cable (D3) to the charging socket on the bottom of groomer A5 directly.



3. Plug the charger into a mains wall socket.
4. The charging indicator A2 will illuminate whilst charging. When the battery is fully charged, charging indicator A2 will turn from red to green.
5. Leave the groomer until fully charged (approximately 2 hours if the batteries were fully discharged).
6. After charging, disconnect the charger from the mains wall socket to conserve power and store it in a safe place.
7. The groomer is now ready for use.

## OPERATING INSTRUCTIONS

---

**▲ WARNING: NEVER USE THE GROOMER ON WET HAIR. IT IS ONLY DESIGNED FOR USE ON DRY HAIR.**

When using this groomer for the first time it is advisable to experiment initially on an area of your light hair growth.

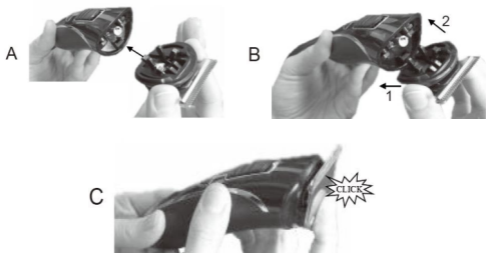
### Changing Grooming Attachments:

There are 5 different grooming attachments. A different grooming attachment is fitted to the groomer for each type of grooming.

**1.** Hold the body of the groomer and use your thumb from the front of the groomer, press back against the cutting blades as shown. The grooming attachment will snap out of the head of the groomer.



**2.** Place one of new grooming attachments on the head of the groomer as shown.



**3.** The grooming attachment is now ready for use.

**Switching On:**

Press the on/off switch to switch the groomer on.

**Switching Off:**

Press the on/off switch to switch the groomer off.

**Cutting Hair:**

1. Fit the hair clipper attachment.



The cutting length is set by both fitting one of the four supplied guide combs (3/6/9/12mm) and sliding the cutting length control to set for a shorter or longer cut.



2. Choose a guide comb to give the cutting length you want. The guide combs are marked with their cutting length - 3mm, 6mm, 9mm, 12mm.

3. Clip the guide comb onto the head of the clipper.

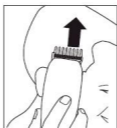
4. Check that the guide comb is fully engaged on the head of the groomer.

5. Before starting, comb the hair in the direction of your hair growth as shown.

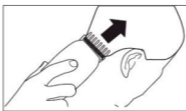


6. Switch on the groomer.

7. Pressing the guide comb against the head, start by clipping the sides from the bottom of the head upwards. Slowly move the clipper up towards the top of the head cutting small amounts at a time.



8. Repeat step 7 around both sides and the back.



9. Clip the top of the head from front to back.

NOTE: Do not push the clipper or force the clipper through the hair.



### **To Contour The Neckline And Area Around The Ears**

**WARNING:** The clipper blades are very sharp when unguarded.

**CAUTION:** Care should be taken when using the groomer without the guide comb fitted as the groomer will remove any hair that comes into contact with the blades.

1. Switch off the groomer.
2. Remove the guide comb attachment.
3. Switch on the groomer.
4. Position the hair clipper attachment so that only one edge contacts the hair.

5. Slowly shape the hair around the ears and contour the neckline by positioning the blades against the neck and moving downwards.

6. For final trimming of the hair, fringe or beard, use scissors (not supplied).

### Beard Trimmer-Trim To Length:

The beard trimmer attachment is used with the guide combs fitted to trim sideburns or beards to an even length. The cutting length is set by both fitting one of the three supplied guide combs [I(8mm)/II(6mm)/III(4mm)] and sliding the cutting length control to set for a shorter or longer cut.

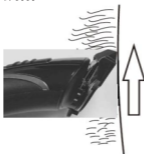


1. Fit the sideburn trimmer attachment.



2. Switch on the groomer.

3. Gently move the groomer across the skin as shown, against the direction of your hair growth.



The hair will be trimmed to length.

**Beard Trimmer-Trimming Edges Etc:**

The beard trimmer attachment can be used without the comb fitted to trim sideburn edges etc.

Follow the instructions in the previous section, but without fitting the comb.

The groomer will now remove all hair in its path.

**Trimming Nose/Ear Hair:**

The nose/ear hair trimmer is used to trim hair from the nostrils and ears.

1. Fit the nose/ear trimmer attachment.



2. Switch on the groomer.

3. Place the tip of the nose/ear trimmer head assembly against the protruding hairs of the nostrils or ears to cut and remove.

Warning: only use the trimmer to remove hair from the areas listed. Do not insert the trimmer more than 0.5cm into the ear or nostril.

Risk of injury.

**Mini Shaver:**

The mini shaver will remove hair and shave the body smooth.

1. Fit the mini shaver attachment.



2. Switch on the groomer.

3. Draw the shaver across the skin, against the direction of your hair growth.

4. You can use your other hand to stretch the skin slightly to get a closer shave.

NOTE: To shave where there is longer hair growth, use the clipper or trimmer attachments to trim the hair initially, then use the mini shaver to finish.



### **Precision Trimmer:**

The precision trimmer has a small trimming head and can be used for detail trimming.

1. Fit the precision trimmer attachment.



2. Switch on the groomer.

3. Carefully use the precision trimmer to detail edges etc.

#### **After use**

When you have finished, switch off the groomer by setting the On/Off switch to turn it off. Always clean the blades after use.

#### **Care and Cleaning:**

The groomer must be switched off and disconnected from the charger before cleaning.

1. Remove any attachment fitted.

2. Clean the blades and comb attachments with the cleaning brush (supplied) to remove remaining loose hair clippings.

3. Clean the housing of the groomer with a soft, dry cloth.

4. The cutting blades of the clipper attachment should be lightly oiled with the oil provided once every few haircuts.

### **STORAGE**

---

The groomer should never be stored whilst hot or whilst still connected to the mains.

Always ensure the groomer is switched off, unplugged from the charger and has cooled down before storing.

### **SPECIFICATION**

---

Model : AGK-11

Model Name : Cruiser

Noise Figure : 72dB

#### **Groomer**

Power Supply : 5.V(Li-Ion Rechargeable Batteries)

#### **Charger**

Mains Supply Voltage : 10-240V~,50/60Hz

Output Rating : 5.V, 1A

## TO REMOVE THE BATTERY PACK

---

Before disposing of this groomer, the internal rechargeable batteries must be removed for separate disposal.

NOTE: This process is not reversible.

1. Disconnect the groomer from the charger.
2. Switch on the groomer and allow it to operate until it stops (battery power is exhausted).
3. Switch off the groomer.
4. Remove the guide comb attachment and blade assembly.
5. There are 2 screws under the blade assembly and 1 screw on the bottom of rear housing. Unscrew these using a crosshead screwdriver.
6. Open the housings.
7. Take out the circuit board and batteries.
8. Cut off the batteries from the circuit board.

CAUTION: Once the batteries have been removed, take precautions to avoid any contact between the terminals. Dispose of the groomer and the batteries separately in accordance with your local recycling regulations.

## SAFETY WARNING

---

- For your continued safety and to reduce the risk of injury or electric shock, please follow all the safety precautions listed below.
- This appliance can be used by aged from 18 years and above and persons with reduced physical, sensory or mental capabilities or lack of experience and knowledge if they have been given supervision or instruction concerning use of the appliance in a safe way and understand the hazards involved. Children shall not play with the appliance.
- Cleaning and user maintenance shall not be made by children without supervision.
- Never pull the charger cable to unplug the appliance.
- Always check the blades for alignment before use.
- Do not use the appliance if the blades are damaged.
- The appliance can become hot during use, only use for a maximum of 30 minutes then allow to cool for 30 minutes.
- The appliance is only intended for clipping human hairs. Do not use this appliance for any other purpose.
- Always check the appliance for damage prior to use. If any damage is observed, do not use the appliance.
- This appliance and charger have no user serviceable parts. Do not attempt to access the appliance covers.
- This appliance is for personal use only. It is not suitable for commercial use.
- Do not place the appliance on or near a heat sensitive surface.
- Keep the appliance dry.
- Do not use the appliance or handle the charger with wet hands.

- Recharge the appliance using the supplied charger only. Do not use the supplied charger to charge any other appliance.
- Switch off the appliance before connecting it to the charger.
- Switch off and unplug the appliance after use.
- To protect against electric shock, never allow the appliance or charger to come into contact with water or any other liquid.
- Never reach for any appliance that has fallen into water. Switch off the charger at the mains immediately and unplug. Do not re-use until the product has been inspected and approved by a qualified electrician. Never leave the appliance unattended when connected to the mains power supply.
- Do not attempt to replace the battery.
- Lubricating oil must be placed away from fire sources and out of the reach of children.
- Avoid your eyes from contacting the lubricating oil.
- If lubricating oil enters the eyes, lay the person down, gently wash the eyes with cold water from a container for 15 minutes, then seek medical help.
- Do not use the appliance on a damaged or broken skin.
- Do not allow the appliance to be exposed to rain or moisture during use or storage.
- Do not expose the appliance to excessive moisture, dust or dirt.
- The appliance is intended for indoor use only.
- The appliance is only to be used with the charger supplied with the appliance.
- Do not throw away the appliance with the normal household waste at the end of its life, but hand it in at an official collection point for recycling. By doing this, you help to preserve the environment.
- The built-in rechargeable battery contains substances that may pollute the environment. Always remove the battery before you discard and hand in the appliance at an official collection point. Dispose of the battery at official collection point for batteries.
- The appliance must be disconnected from the supply when removing the battery.

## **WARRANTY CARD AND TERM & CONDITIONS**

---

**NOTE:** To Claim the warranty, all information on the warranty certificate should be completed along with original invoice.

- All warranty information, product features and specifications are subject to change without prior notice.
- All matters are subject to Delhi Jurisdiction.

Customer's Name		Contact Number	
Customer's Address			
Model No.			
Name of Distributors/ Dealers		Contact Number	
Address			
Purchase Date		Invoice Number	
Dealer's Stamp			

- AGK-11 Cruiser Grooming Kit comes with 1 year warranty from the date of purchase.
  - Warranty can not be claimed if the product is damaged by wrong operation or force majeure.
  - Accessories supplied with AGK-11 Cruiser Grooming Kit are not covered under the warranty.
- 

### **CUSTOMER CARE:**

Ambrane India Pvt. Ltd.  
 224, Second Floor, D-Mall. Netaji  
 Subhash Place, Delhi; India - 110034  
**Contact No.:** +91-1145911111,  
**E-mail:** care@ambraneindia.com,  
**Web:** www.ambraneindia.com