

**The Groom Classique is suitable for inward opening doors only**

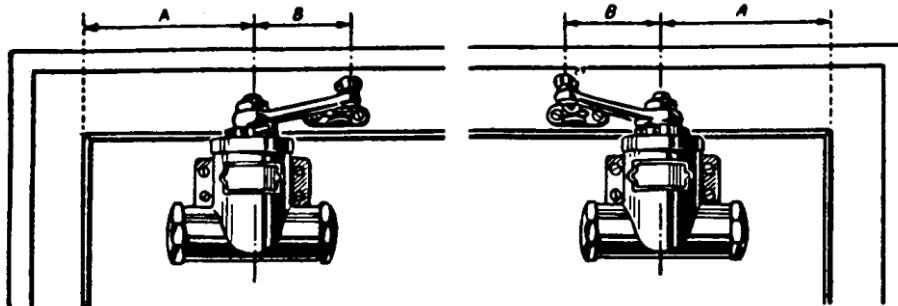


Fig 1. Door Hung  
On Left = RH Closer ( D )

Fig 2. Door Hung  
On Right = LH Closer ( G )

Dimension A, the distance from the centre line of the hinge to the pinion of the closer, varies according to the size of the closer and the required opening angle of the door.

<i>Door Opening To 90°</i>		<i>Door pening O 1d 90° Beyo</i>	
Size	A	Size	A
3	240 mm	3	180 mm
4	260 mm	4	200 mm
5	310 mm	5	230 mm
6	350 mm	6	290 mm

Dimension B, the distance from the pinion of the closer to the centre of the shoe, is **ALWAYS** 80mm when installed in standard configuration.

**Adjustment**

- 1) Adjust spring power by using the wrench provided to turn the ratchet from the hinge side to the lock side - ( Maximum 8 clicks )
- 2) Adjust the closing power to overcome latching action or air pressure resistance, adjust the threaded of the arm to match Fig 3. Fig 4 will effectively delete any latching action.
- 3) Adjust closing speed via the hydraulic valve located on the right side of the closer body.

CI/SfB			
31	49		
December 2013			

**Reversing The Handing**

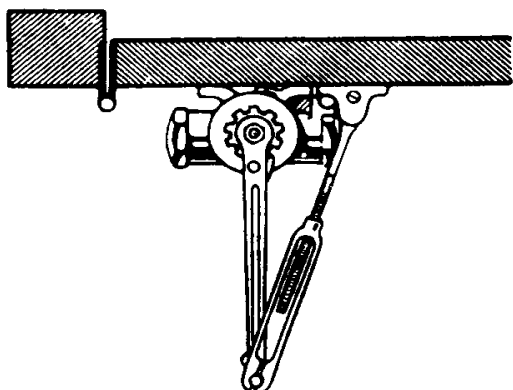


Fig 3.

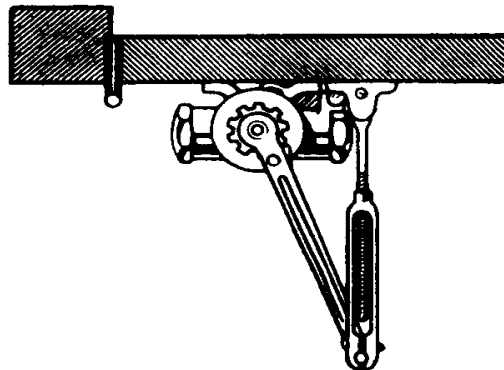


Fig 4.

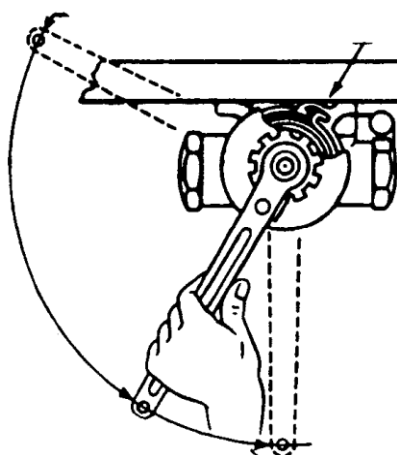


Fig 5a. Left Hand

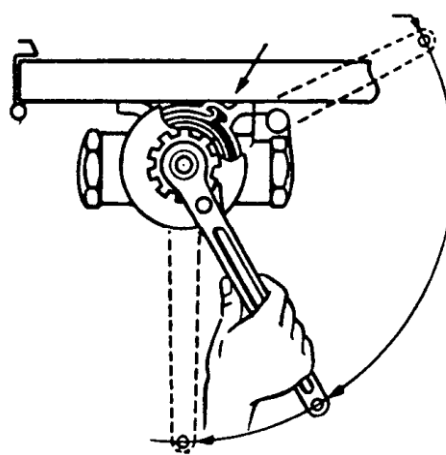
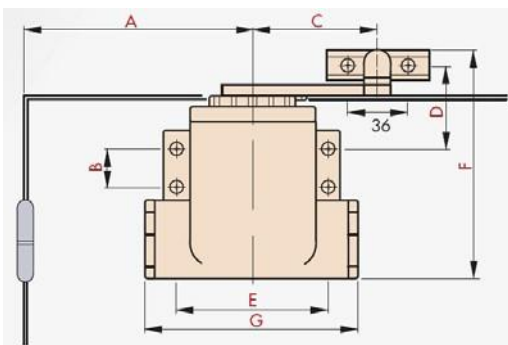


Fig 5b. Right Hand

Fit the arm to obtain check action at the position shown behind the door .

Closers are normally supplied in right hand configuration. To change to left hand, remove the arm, ratchet and cover; withdraw the spring from the housing, reverse it and replace, ensuring that the tail of the spring is correctly located in the groove of the housing, i.e. RH closer - ( the tail points to the left - see Fig 5b ).

Replace the cover and the ratchet, ensuring that the slot of the ratchet housing is aligned with the inner tail of the spring.



Code	Size 3	Size 4	Size 5	Size 6
A - Door Opening to 90°	240	260	310	350
A - Door Opening Beyond 90°	180	200	230	290
B	29	33	35	40
C	80	80	80	80
D	48	48	60	72
E	85	96	107	120
F	145	160	185	215
G	135	145	170	194

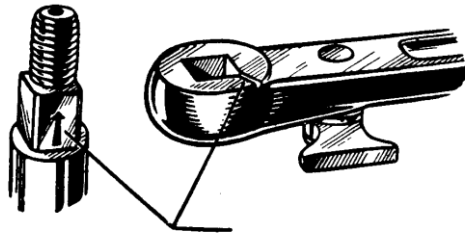
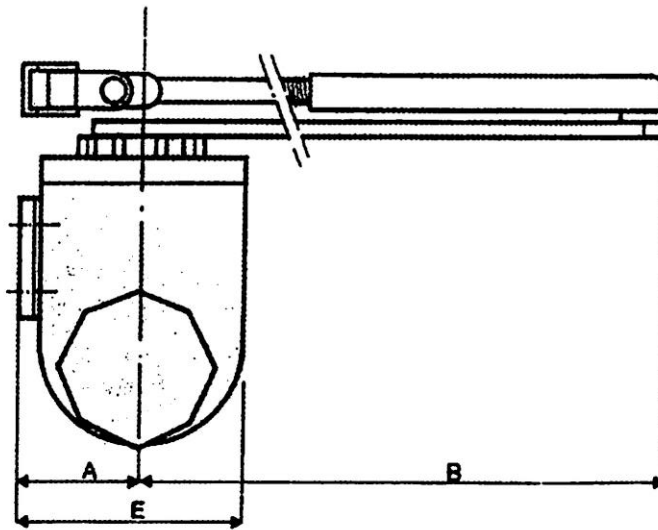
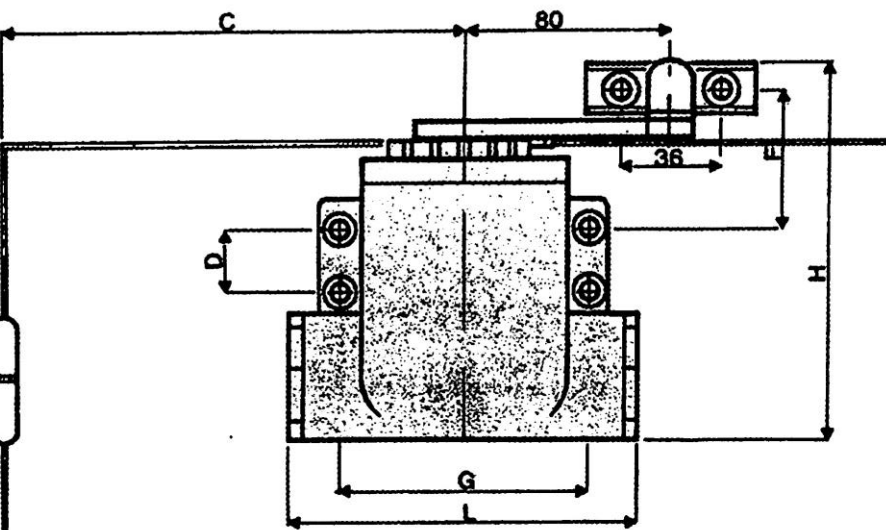


Fig 6.

When fitting the arm, ensure that the mark on the arm lines up with the arrow on the pinion, irrespective of the handing of the closer ( Fig 6 ). The exception to this is when the Conversion Bracket is to be installed, when the mark on the arm goes on the opposite side to the arrow on the pinion.



<b>Closer size</b>	<b>3</b>	<b>4</b>	<b>5</b>	<b>6</b>
opening to 90°	240	260	310	350
opening beyond 90°	180	200	230	290
	46	52	52	54
	245	245	275	315
	29	33	35	40
	85	100	102	110
	48	48	60	72

**Selection**

	<b>3</b>	<b>4</b>	<b>5</b>	<b>6</b>
--	----------	----------	----------	----------