



trade show&go™

Easy Come. Easy Go. Easy Show.

MyPAL and MyCrate Products are Manufactured in the U.S.A. FROM START TO FINISH by Trade Show and Go, LLC

OUR MISSION: To continuously develop new products that enable exhibitors to work smarter, present their company better, reduce costs and save time.



Easy Come.

“I arrived at my booth, unpacked MyPAL and set up my 2 tables in less than 2 minutes.”



Easy Go.

“MyCrate pays for itself! We never wait for our crate at the end of a show. No more missed flights or extra night in a hotel.”



Easy Show.

“Just did the gift show and saved \$1100. I will never do another show without MyPAL.”



It's Show Time.

“Fantastic product. I wish I had MyPAL ten years ago.”



In No Time.

“At the end of a show, I'm always gone in fifteen minutes. I'm thrilled!”

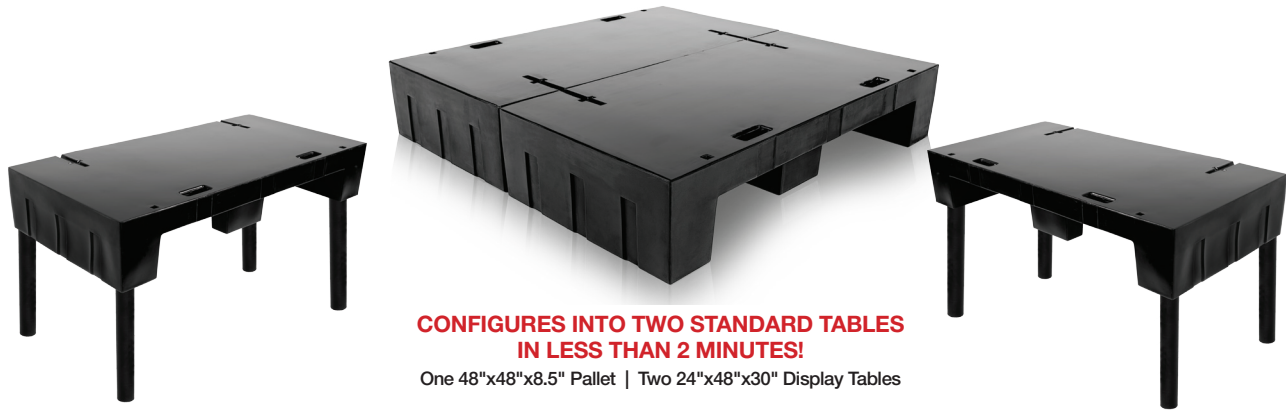
888.596.3690

info@tradeshowandgo.com

www.tradeshowandgo.com

MyPAL

World's Only Pallet-to-Table System



**CONFIGURES INTO TWO STANDARD TABLES
IN LESS THAN 2 MINUTES!**

One 48"x48"x8.5" Pallet | Two 24"x48"x30" Display Tables

MyPAL is the first and only system that converts from a shipping pallet* into two standard tables in less than two minutes! All without the use of tools! MyPAL is the self-sufficient exhibiting solution you've always wanted. Now it's here.

There's nothing more frustrating than sitting around waiting for your pallet to be delivered after the show. So don't. Take charge with MyPAL, the ingenious system that makes

trade show exhibiting easier, more affordable and less time consuming.

Simply unload your display materials from MyPAL and assemble the tables, no tools required. When the show is over, your tables transform back into a pallet just as easily. Load it up and hit the road. No more waiting. No more rental tables. A lot less stress. **Easy Come. Easy Go. Easy Show.**

**Pallet also converts into one bar-height table or a product/demonstration platform. Add accessories to create a bench, coffee table or crate.*



MyPAL ADVANTAGES!

- NEVER WAIT FOR YOUR PALLETS AGAIN
- NO MORE TABLE RENTALS
- NO TOOLS REQUIRED
- PAYS FOR ITSELF AFTER ONE SHOW
- ASSEMBLES IN LESS THAN TWO MINUTES

The first standard shipping pallet that becomes two display tables in four EASY steps! No Tools Required!

1

Remove packages

2

Pull apart pallet

3

Assemble 2 tables in under 2 minutes

4

It's Showtime!

MyPAL-MyCrate Combo

World's Only Crate-to-Pallet-to-Table System



PALLET TRANSFORMS INTO 2 DISPLAY TABLES



NOW IN 2 SIZES

46" wide x 46" long x 22" high. Storage volume: 27 cubic feet
 46" wide x 46" long x 36" high. Storage volume: 44 cubic feet



CRATE PANELS TRANSFORM INTO 2 COUNTER-HEIGHT TABLES WITH THE ADDITION OF 8 SUPPORT BRACES

There is nothing more frustrating than sitting around waiting for your pallet or crate to be delivered at the end of a show. So don't. Take charge with MyPAL-MyCrate Combo, (The Combo). You will never again have to rely on show management to return your pallet or crate.

The trade show world has yet to see anything like this.

The Combo is the union of our ingenious MyPAL pallet system and the MyCrate accessory package that consists of 6 interlocking panels and two support braces. Together, these products create a collapsible shipping container that is remarkably sturdy and durable. The Combo has all of the great

advantages of the MyPAL pallet-to-table system, and with additional accessories, the 36" Combo can also be transformed into 2 counter-height tables.

At showsite, simply unload your products, disassemble the Combo, snap together your display tables...and you're done. In less than 2 minutes and with no tools required!

When the show is over, convert the tables back into a pallet, reassemble the MyCrate and load up. You can literally hit the road in minutes. No more rental tables. No more crate storage. No more pallet storage. No more wasted time. **Ever.**

MyCrate Combo ADVANTAGES!

- NEVER WAIT FOR YOUR CRATE AGAIN
- NO MORE TABLE RENTALS
- COLLAPSIBLE DESIGN
- REASSEMBLES IN LESS THAN 2 MINUTES
- THE 36" CRATE TRANSFORMS INTO 2 COUNTER-HEIGHT TABLES WITH ADDITIONAL ACCESSORIES
- NO TOOLS REQUIRED

MyPAL/MyCrate Combo assembles/disassembles in six EASY steps! No Tools Required!

<p>1</p> 	<p>2</p> 	<p>3</p> 	<p>4</p> 	<p>5</p> 	<p>6</p> 
Remove top	Remove 2 inside brackets	Remove 4 sides	Pull Apart MyPAL base	Assemble 2 tables in under 2 minutes	It's Showtime!

FREQUENTLY ASKED QUESTIONS



What are the dimensions of MyPAL and how much does it weigh?

Pallet dimensions: 48" x 48" x 8¹/₂" • Weight: 70 lbs.

What are the dimensions of each table?

Each table: 30" h x 24" w x 48" l

What is the weight capacity of the pallet?

Up to 1,200 lbs.

What is the weight capacity of each table?

Up to 300 lbs.

Can MyPAL convert into a Counter-height table?

MyPAL converts into one 38" counter-height table by using both halves of the pallet. No accessories are needed. MyPAL can also convert into two counter-height tables with the purchase of two (2) Counter-Height Extensions.

What else can MyPAL convert into without accessories?

MyPAL can also be used as two (2) 2' x 4' x 8.5" display/presentation platforms.

With accessories, what else can I create with MyPAL?

You can make a coffee table or a bench with a padded seat.

Where are MyPAL and MyCrate manufactured?

Both are proudly made in the USA.

What is MyPAL made of?

100% recyclable high density Polyethylene (Non-toxic Plastic).

What is the warranty on MyPAL?

MyPAL is guaranteed for 60 months from date of purchase. This guarantee covers any defects that may be attributed to the manufacturing and assembly process.

What is the purpose and distinction between MyCrate and MyPAL-MyCrate Combo?

MyCrate is a collapsible shipping container accessory consisting of 4 side panels, 2 interior bracing supports and 2 top panels. It is designed to be utilized with the MyPAL pallet system and is offered for those who have a MyPAL and require a crate. MyPAL-MyCrate Combo (the Combo) is a turnkey shipping and exhibit solution. It includes one MyPAL and one MyCrate accessory, combined, to offer exhibitors a self-sufficient exhibiting experience.

Does MyCrate only come in one size?

No. There are two heights available: 22" and 36".

What are the dimensions of the Combo and how much does it weigh?

22" Option: 48" x 48" x 22" • Weight: 145 lbs.
36" Option: 48" x 48" x 36" • Weight: 168 lbs

What is the storage capacity?

22" Option: 27 cubic feet
36" Option: 44 cubic feet

What is the Combo made of?

The MyPAL pallet is constructed of HDPE. MyCrate is made of 100% recyclable PVC.

How long does it take to assemble and disassemble the Combo?

MyPAL and MyCrate take approximately 2 minutes each to assemble. Disassembly is of equal time.

Are tools required to assemble and disassemble the Combo?

No tools are needed.

Are there any additional uses for MyCrate and the Combo?

Absolutely. With the addition of the optional Crate-to-Table Brace Kit, the crate panels transform in 2 counter-height tables.

I already own a MyPAL. Can I purchase MyCrate now and use it with my existing MyPAL?

Yes, MyPAL and MyCrate can be purchased at different times. They are engineered to work together.

Can I use the MyCrate accessory with any other pallet?

No, MyCrate was made specifically to be used with the MyPAL pallet system.

Does the Combo create two tables?

Yes, the MyPAL-MyCrate Combo utilizes the same MyPAL pallet and has all of the great MyPAL advantages...and more. See MyProducts for our complete line of available options.

When are orders shipped?

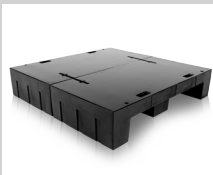
All in stock orders are shipped within 24 hours.

When not in use, how should the MyCrate panels be stored?

MyCrate panels must lie flat when not in use to prevent warpage.

**For additional questions call
888.596.3690.**

MyProducts



MyPAL



MyCrate



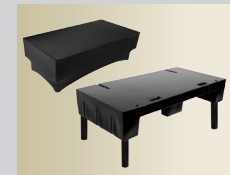
MyPAL-MyCrate Combo



MyPAL Counter-Height Extension Kit



Bench Kit



Coffee Table Kit



Fitted Tablecloth with Logo Option



Table Runner



Spandex Covers



Folding Stool



Crate-to-Table Brace Kit



MYPAL Connecting Hardware



MyPAL Casters



Disposable Trash Can / Liners Kit



Ratchet Tie-Downs