

Never Wait for your **Crate** Again!

STEP 1



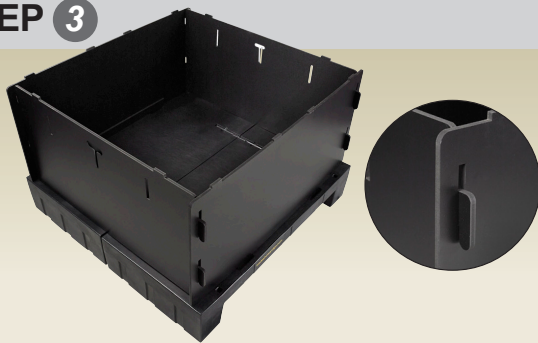
Start with your MyPAL pallet.

STEP 2



Attach two opposite side panels to the MyPAL base.

STEP 3



Interlock the remaining two sides.

STEP 4



Connect the 2 interior brackets.

STEP 5



Attach both halves of the top.

STEP 6



Attach 2 tie-down ratchets and you're Ready to Go!

Simply reverse the process to transform your crate back into a pallet!

For information on how to transform your crate into 2 counter-height tables using the optional Crate-to-Table Brace Kit, call **888.596.3690**.

