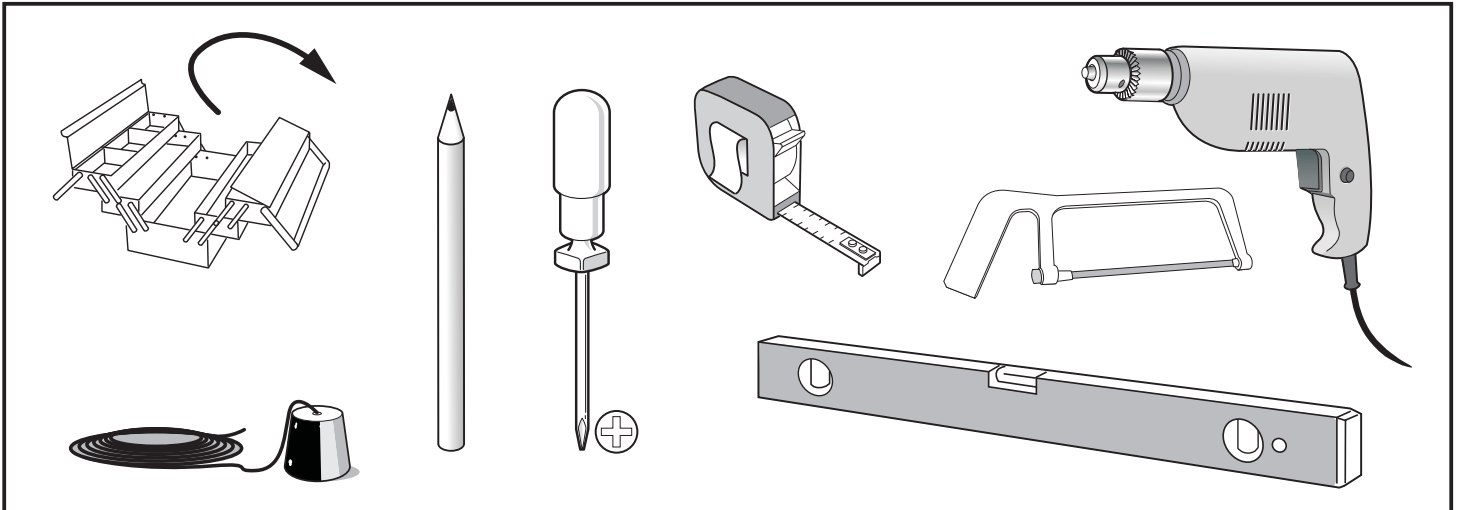
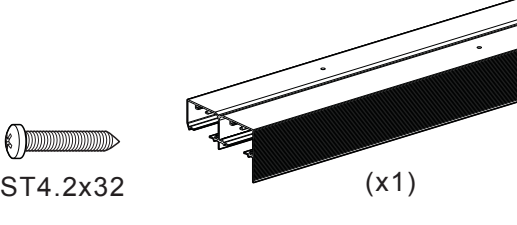
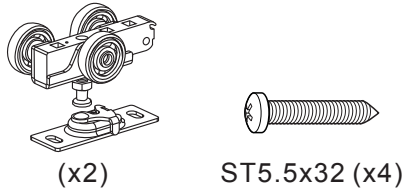
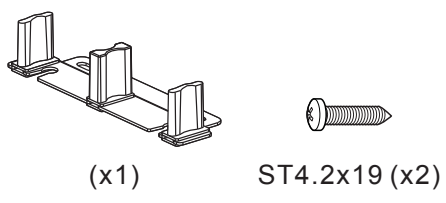
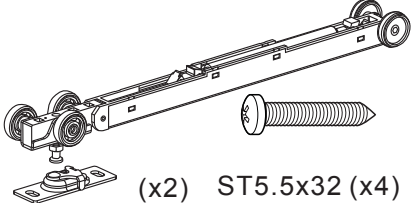
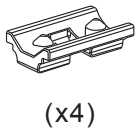
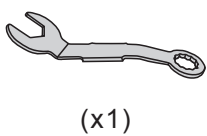
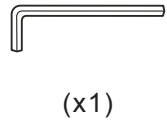
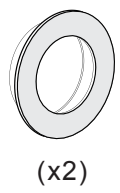


TOOLS REQUIRED



HARDWARE INCLUDED

Track Length	Screw Quantity		
48"	(x7)	 <p>ST4.2x32 (x1)</p>	 <p>(x2) ST5.5x32 (x4)</p>
60"	(x9)		
72"	(x11)		
96"	(x15)		
 <p>(x1) ST4.2x19 (x2)</p>	 <p>(x2) ST5.5x32 (x4)</p>	 <p>(x4)</p>	
 <p>(x1)</p>	 <p>(x1)</p>	 <p>(x2)</p>	

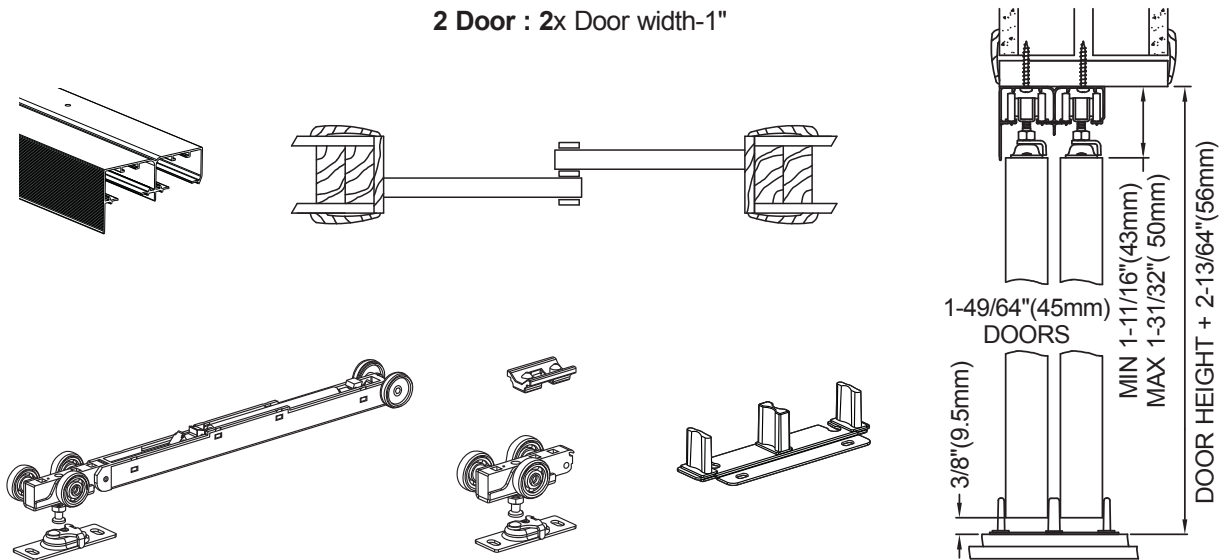
INSTRUCTIONS

SLIDING DOOR HARDWARE

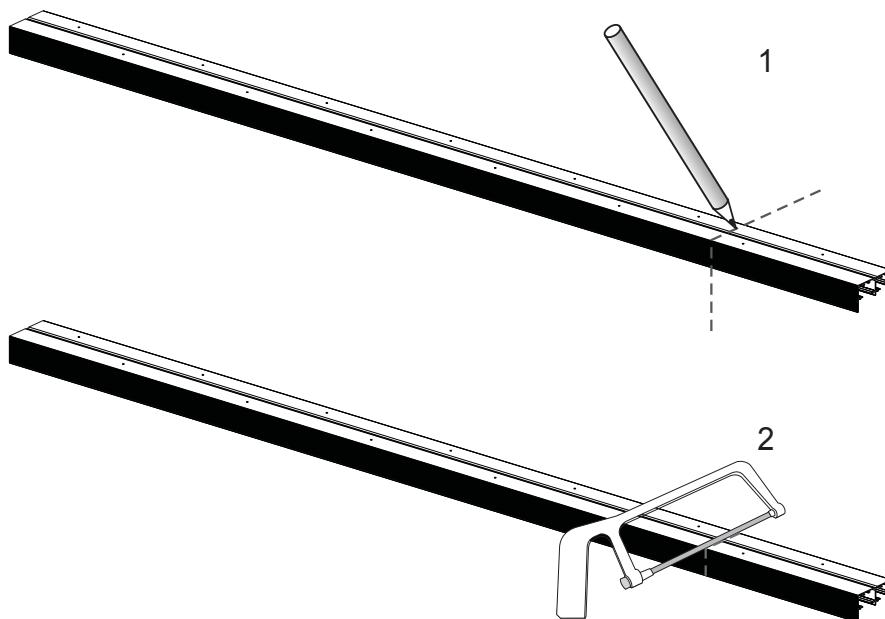
Fits 35 and 45mm thick wood door

PREPARE OPENING CAREFULLY: MAKE SURE CORNERS ARE SQUARE, HEADER IS LEVEL AND JAMBS ARE STRAIGHT.

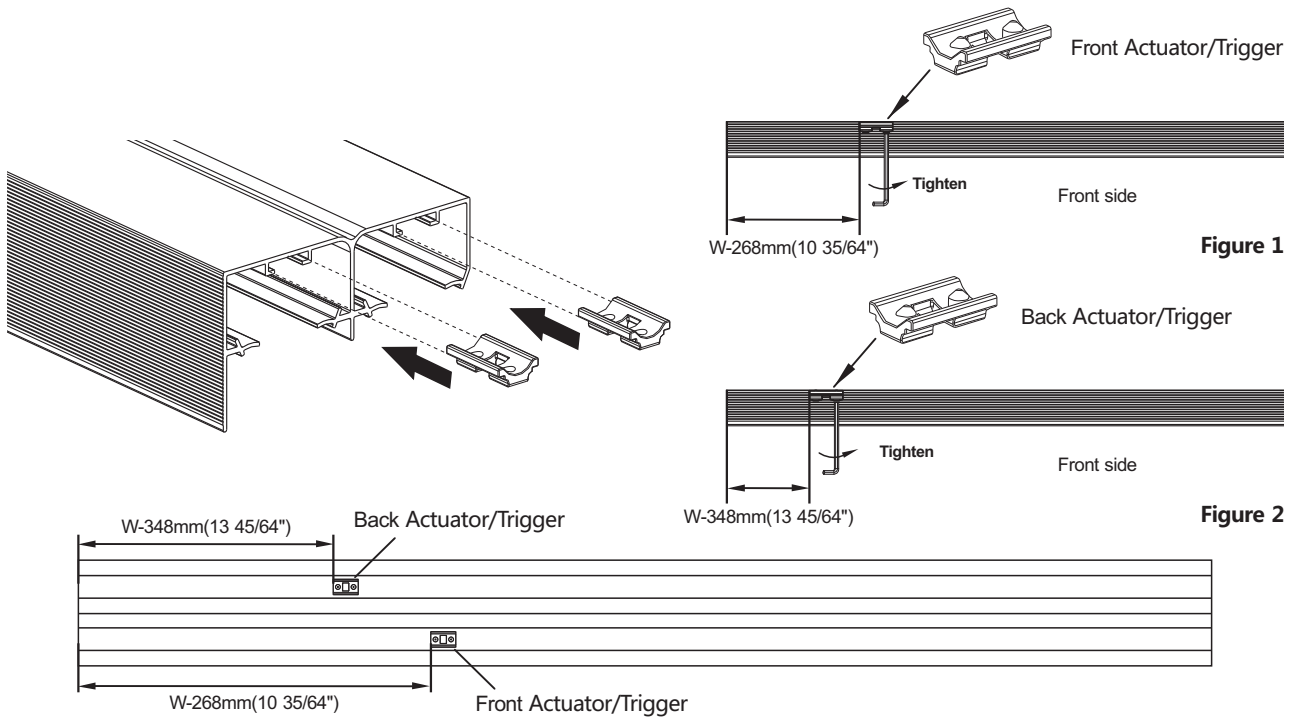
2 Door : 2x Door width-1"



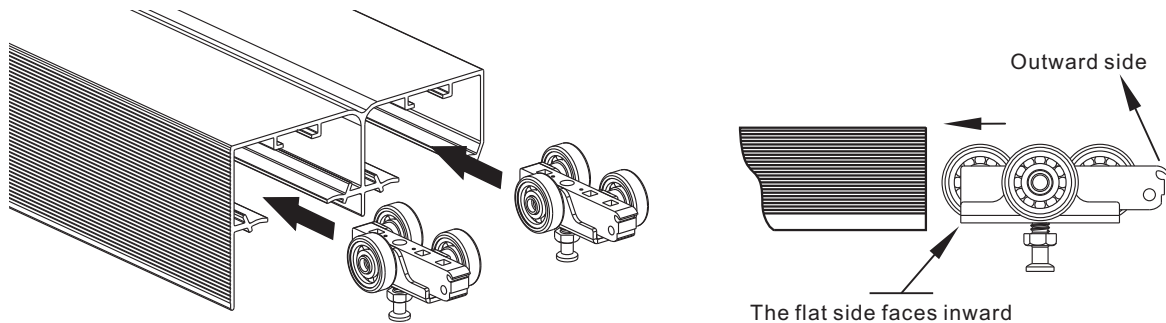
1 Cutting Instructions: The length of the track can be cut according to actual needs.



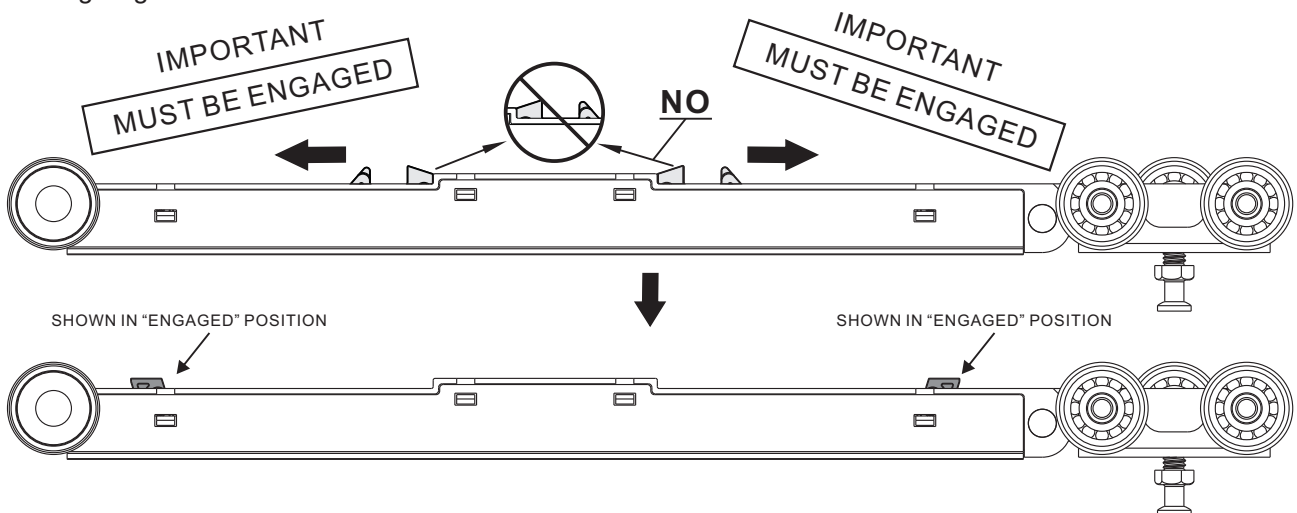
2 Place the 1st soft close actuator/trigger into the track at the given place using Figure 1 and 2.
Note: W=Door width



3 Insert Ball Bearing Hanger Wheel assembly into Track.

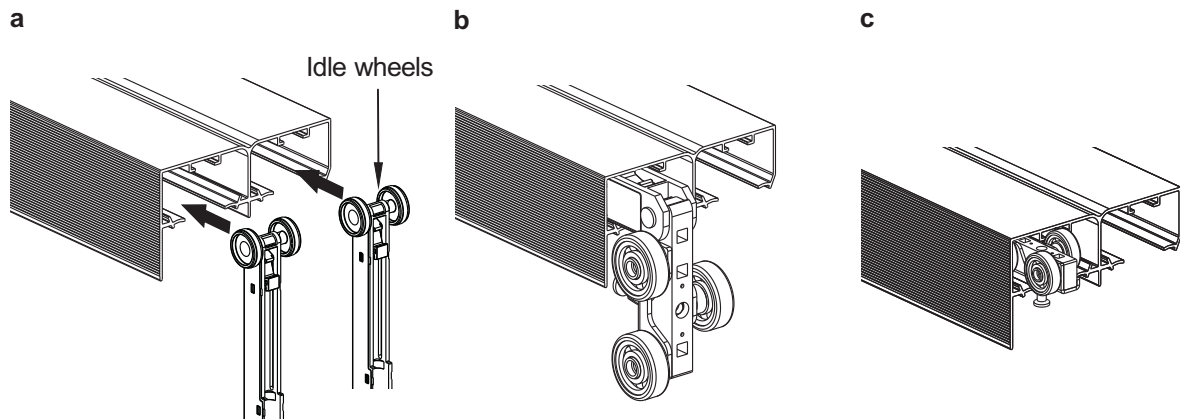


4 Engage Soft Close Dampener by pushing Dampener trigger toward "engaged" positions on both side.
*This step is very important. **DAMPENER MUST BE ENGAGED** or soft close will not work, Soft Close Dampener may be **DAMAGED** if installed incorrectly. Door will have to be removed and installation of Soft Close will have to begin again.*

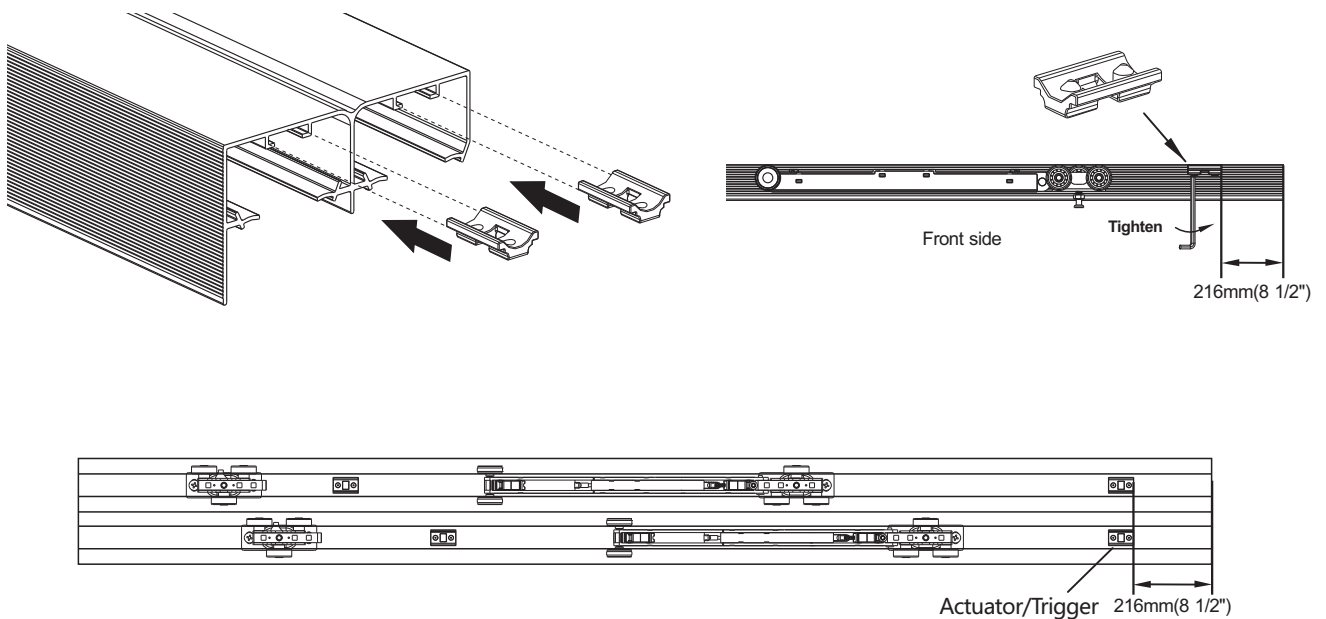


5 Insert Soft Close Hanger into Track.(Idle wheels first)

Rotate the hanger (three wheel part) to 90 ° and move soft close body first inside the track ,then also move the hanger inside the track.

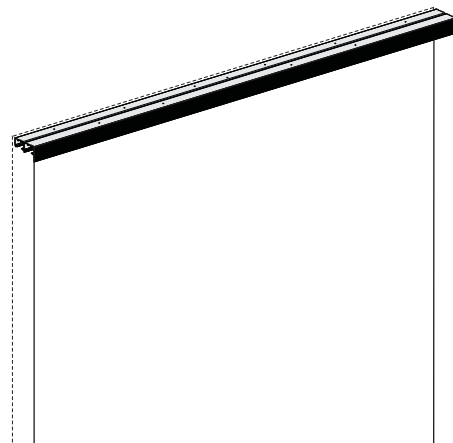
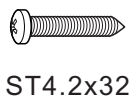


6 Place the 2nd soft close actuator/trigger into the track and have it 216 mm from the end plates.



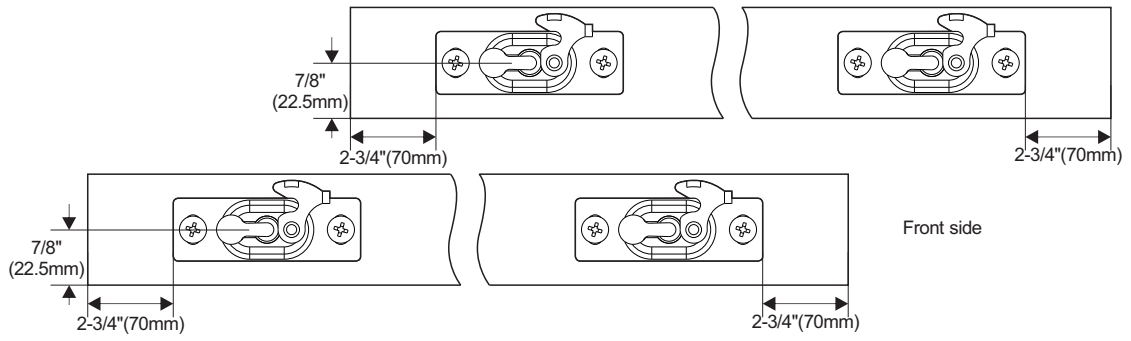
7 Mount Track to Header.

NOTE: Alternate hanger wheel assemblies in track to provide even pressure.

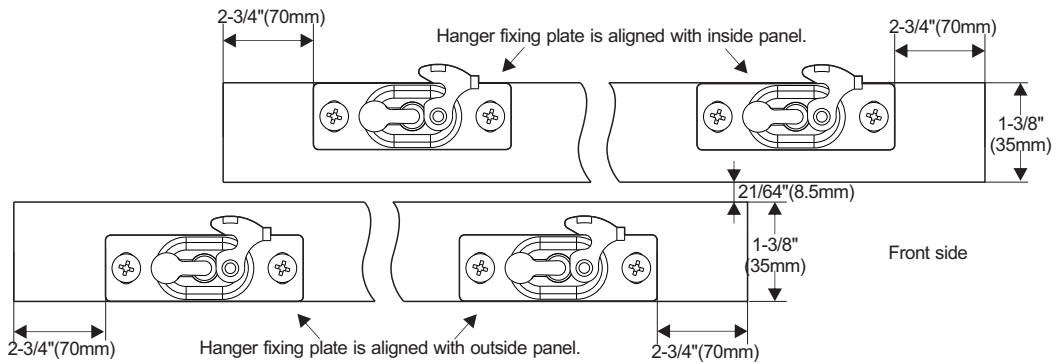


8 Mount Hanger Plates to Door: Fasten door plates to top of door, 2-3/4" (70mm) from each edge.

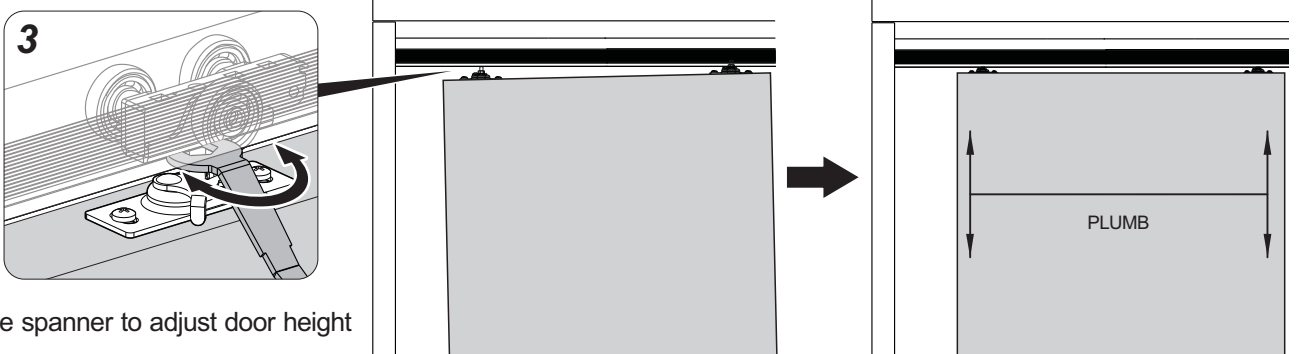
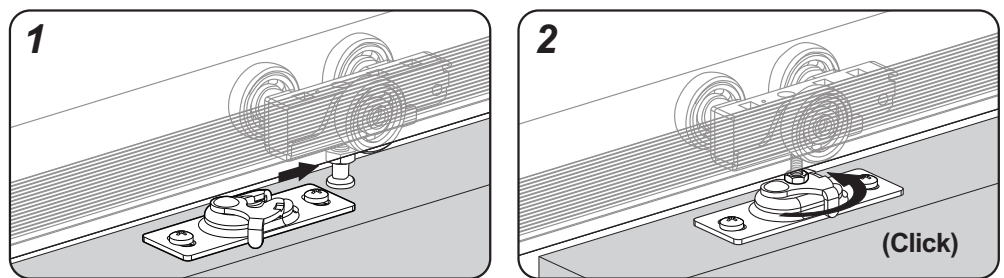
45mm DOOR



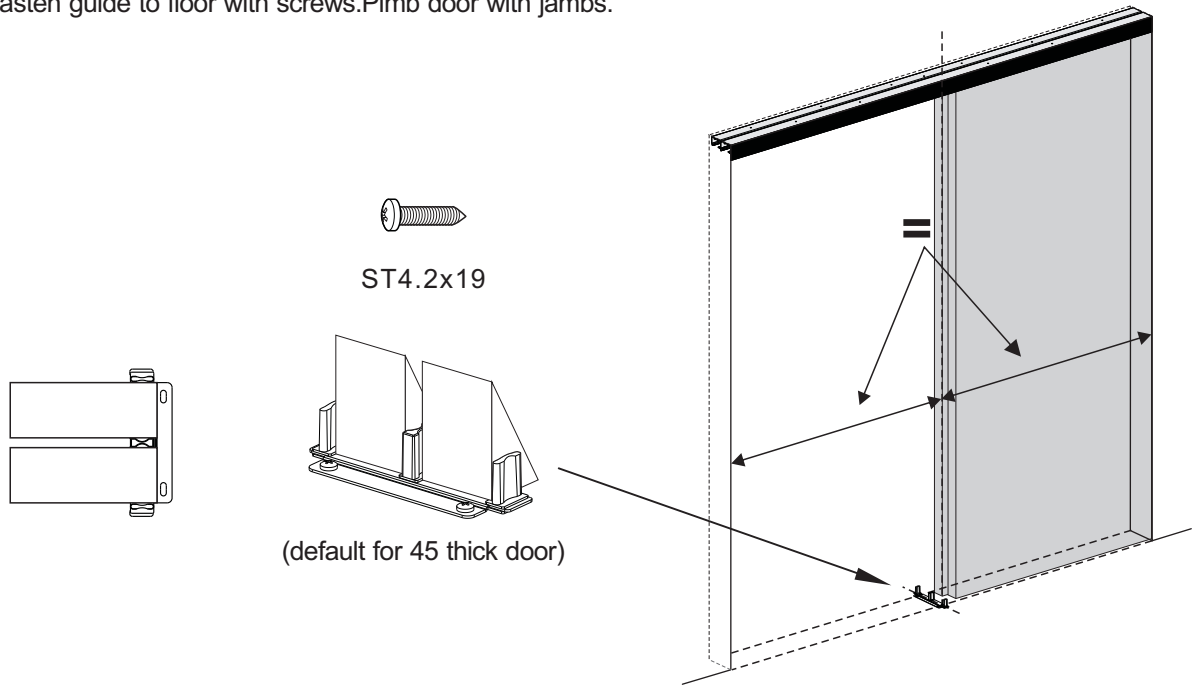
35mm DOOR



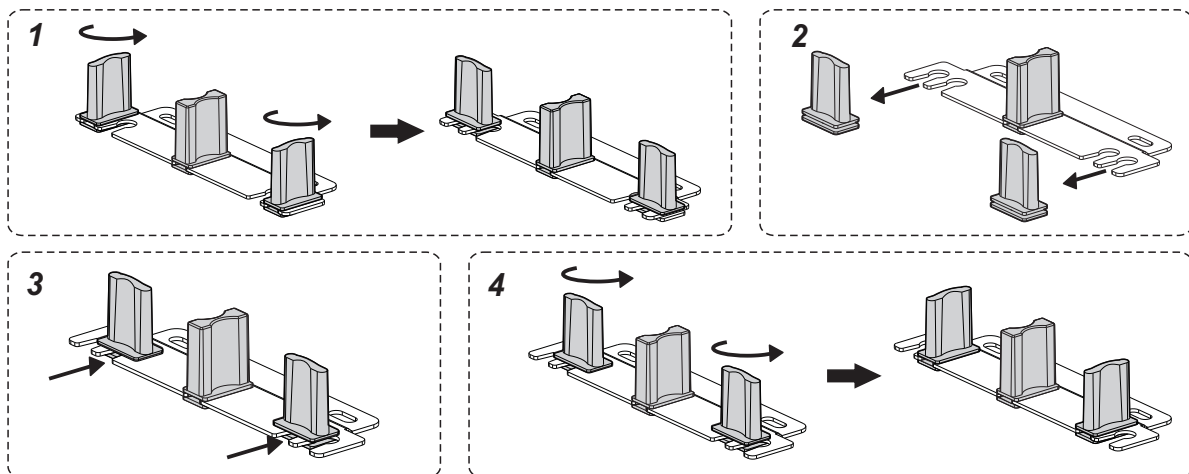
9 Hang Doors. Start with front door first. Slide pivot pin of hanger into socket and click the tab in place. Check for smooth travel. Repeat with rear door.



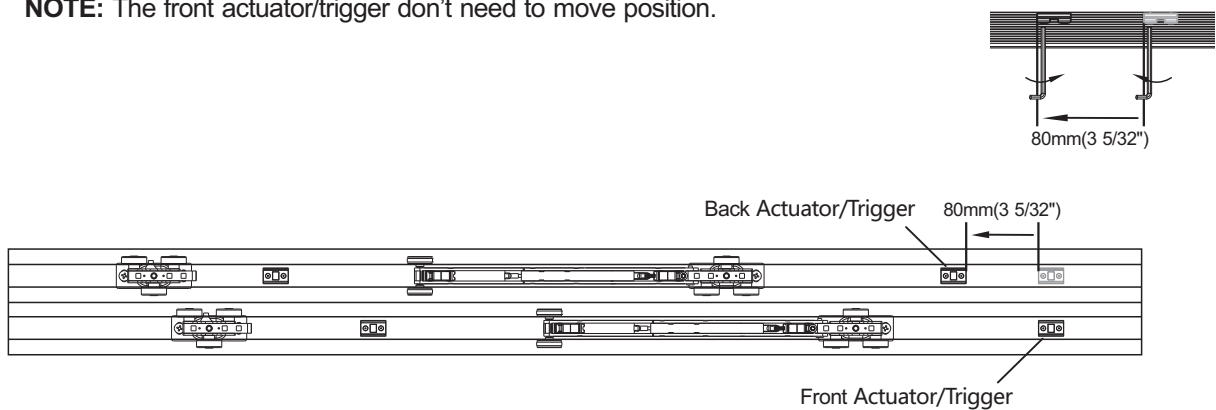
10 Install Bottom Guide: Slide both doors to side jamb. Place guide between doors and align doors with jamb, fasten guide to floor with screws. Plmb door with jambs.



Floor guide installation instruction for 35mm thick wood door :



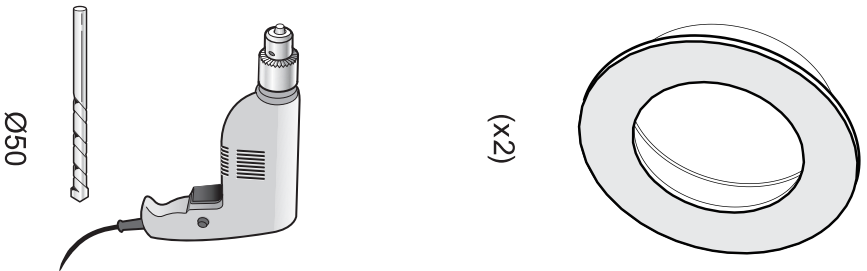
11 ONLY push the back actuator/trigger 80 mm to left as shown in following figure.
NOTE: The front actuator/trigger don't need to move position.



HAVE QUESTIONS OR PROBLEMS?

CONTACT US: SALES@NUK3Y.COM

1



2

