



Installation Guide

Direct Doors.com

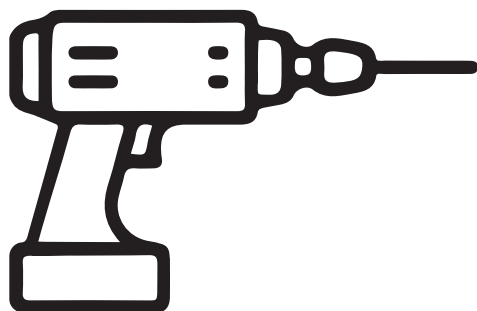
All content and images are copyright protected by DirectDoors.com
Intellectual Property Office Trademark
No: UK00003238454



Thank you for purchasing one of our Thruframe products, in this PDF we take you step by step on how to assemble and install your new product. We will also go through the list of tools required to do so.

All Thruframe door products are cut to size upon receipt of order and cannot be cancelled afterwards, they are classed as a bespoke item created and manufactured by DirectDoors.com to suit your chosen door dimensions. Please ensure you have a reliable joiner / builder to carry out the following works and ensure that they have a well ventilated area if cutting. This frame can have different joints used with it, this will be shown below.

TOOLS REQUIRED



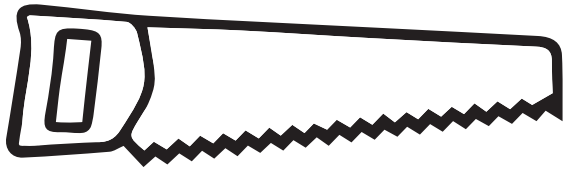
Cordless Power Drill - Drill Bits



3mm Steel Drill Bit (this is required for pilot holes through the MDF frame)



Countersink bit (this is to allow screw heads to go below surface of frame at pilot holes)



Hand Saw



Tape Measure



Masonry Bit (only required if it's not a timber stud wall you're fixing to)



Nail Punch (for door stop pins)



Spirit Level



NOTE: Assembly varies slightly with fire frames, door stops should be glued (not supplied) and screw fixed after countersinking the screw head in the same way as explained previously for the frame assembly, intumescent fire seals are supplied for all fire frames and must be used and fitted in every instance to the factory machined groove we have set within the frame.

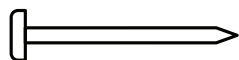
Please note that the following materials are supplied with the Thruframes:



Frame screw assembly fixings (this is for fixing the lintel to the legs)

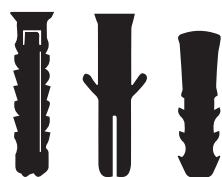


Smaller screws are only supplied for fire door frame door stops



Pins for non fire frame door stops

Please note that the following materials are NOT supplied with the Thruframes:



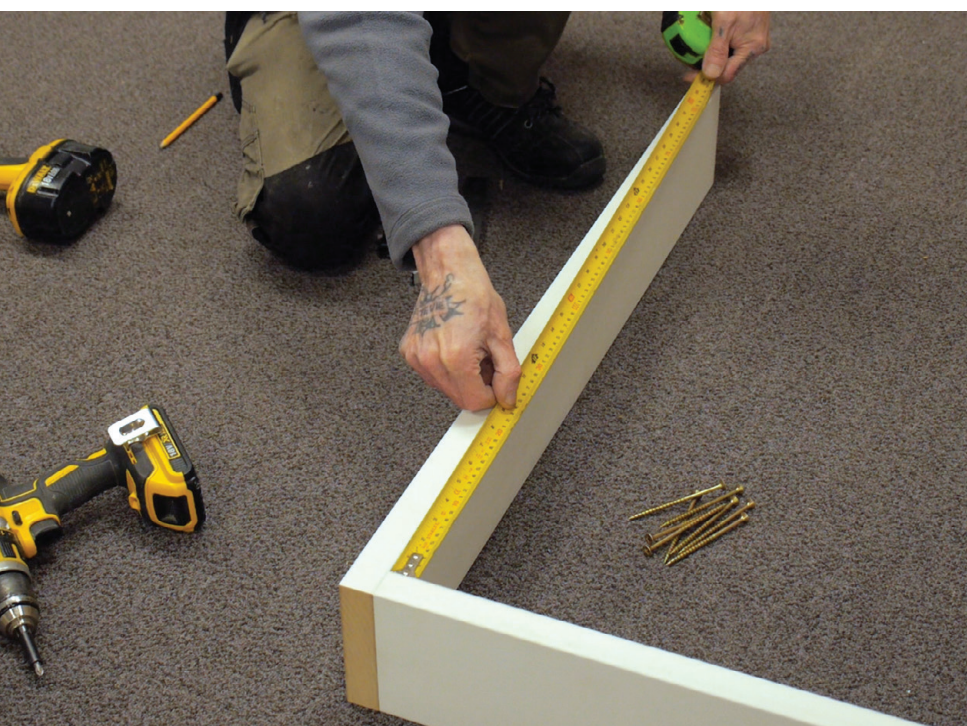
Wall screw fixings and masonry plugs: these are very dependent on whether the wall is "stud" timber frame or brick etc, stud walls do not require masonry plugs



Filler



CUTTING, ASSEMBLING AND INSTALLING AN MDF THRUFRAME



Firstly, measure the opening you have and confirm that the frame kit and door size you intend to use will fit.

Cut the frame lintel to the required width.

2





Cut each leg to the required height.

3

Next, lay each frame leg and the lintel on the floor or on a bench.

4



Pre drill the lintel twice at each end from the top and countersink these holes to allow it to accept the screws that will secure it to the top of the legs.

5



Stand the frame in the new opening and using a spirit level make sure the lintel is level, now check each leg is level on both surfaces (edge and face).

Pre-drill and counter-sink the legs as and where you deem fit but try and hide some of these screw fixing holes behind the supplied MDF door stops - it's more professional and tidier.



Continue to check the frame is square and level as you proceed with fixing these screws to the top of your wall.

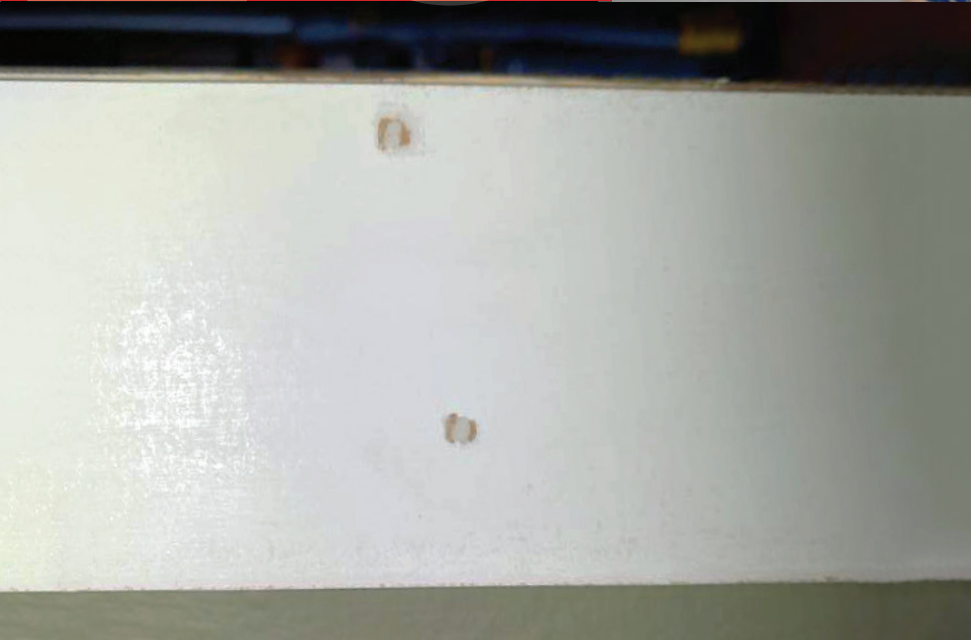


Next, check it is all secure, square and level. Now, it's time for the door stops.

9

Cut the lintel door stop to size, pin it into position to suit the door thickness, now do the same with the door stop legs.

10



Lastly, fill in any holes for the pins or screws.

11