

Flat Track 100

Sliding & Folding Door Systems



Direct Doors.com®



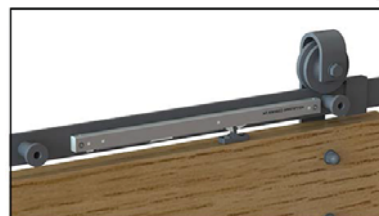
Product Overview

The Flat Track 100 sliding hardware with its various finishes and hanger styles is just as at home in a trendy café or loft apartment as it is in a barn conversion, cottage or renovation on a listed building.

For doors up to 100kg with nylon bearing wheels offering smooth silent operation across the flat bar, the Flat Track 100 system offers aesthetic appeal and versatility including new soft closing and bi-passing bracket options without compromising on performance.

Features

- Durable steel hangers with PA66 nylon wheels run effortlessly and silently across a solid flat track
- Nylon wheels supplied with precision sealed ball bearings
- Anti-jump blocks prevent door from being removed from track
- Soft closing available, concealed behind the flat bar track
- Easy to install
- Choice of hanger styles and finishes available
- For internal use only



Soft Closer
(Fitted behind track)



Hanger



Track stop and anti-jump block



Guide

Technical Specifications

- Maximum Door Weight: 100kg
- Minimum Door Width: 550mm
- Door Thickness: 35mm - 44mm

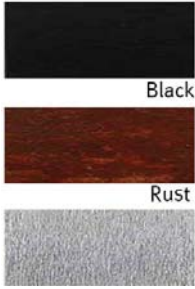


Technical Specifications

Straight Hanger



Available Finishes

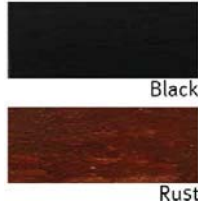


Brushed 304 SS

Arrowhead Hanger



Available Finishes



Rust

Wagon Wheel Hanger



Available Finishes



Black

Top Mount Hanger



Available Finishes



Brushed 304 SS

Flat track 100

Maximum door weight 100kg

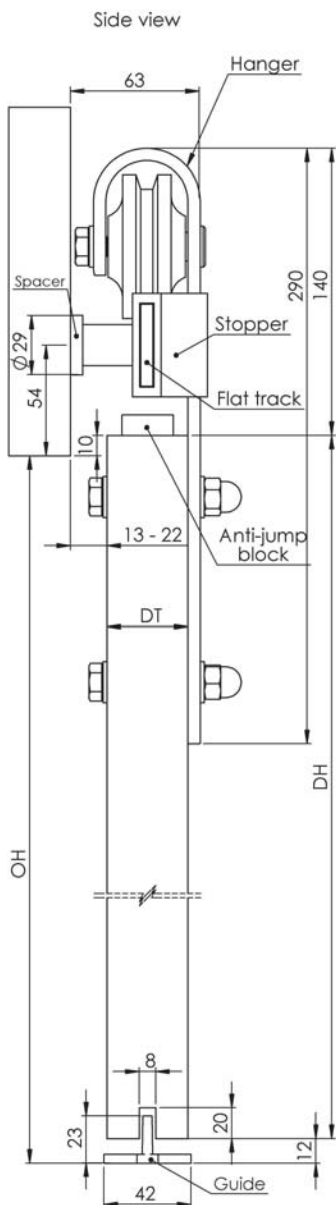
DH - Door height

DWi - Door width, minimum 550mm

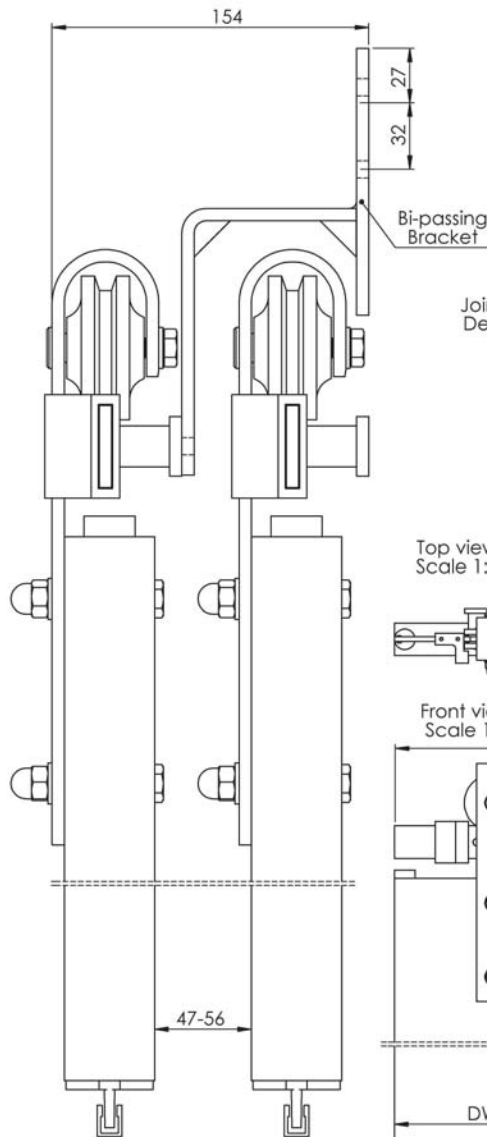
DT - Door thickness, between 35mm and 44mm

OW - Opening width

OH - Opening height



Side view With Bi-passing Bracket



NOTE:
For doors over 1500mm wide but under 100kg a second track must be used with a jointing bracket

