

Downtown

Landmark: Vancouver Art Gallery
Crowd: bankers, bike couriers (day);
 tipsy suburban youth (night)
Accessory: messenger bag (leather or

High-end retailers and glittery condo/hotel hybrids dot the downtown landscape. But peeking between these pillars of luxury are reminders of our grand natural setting

Pacific Centre (701 W. Georgia St., 604-688-7235. Pacificcentre.ca) runs between Granville and Howe, and is corralled by Robson and Pender. Venture inside for classic, upscale sportswear from Michael Kors. Swing next door to stiletto legend Stuart Weitzman. Follow with Harry Rosen, the hub for high-end menswear. Nearby Sephora purveys luxe cosmetics and skin care. And all roads lead to **Holt Renfrew** (737 Dunsmuir St., 604-681-3121. Holtrenfrew.com), where you may spot visiting movie stars perusing racks of Rag & Bone, Marni, Prada, Phillip Lim, and more.

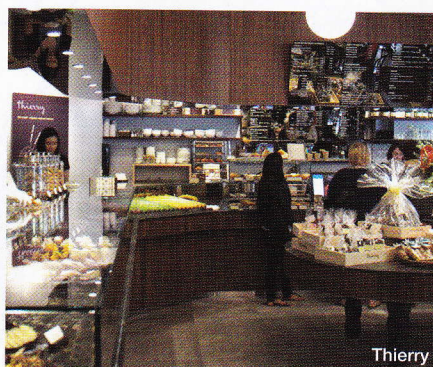
Spirits run high at **Long Table Distillery** (1451 Hornby St., 604-266-0177. Longtabledistillery.com), Vancouver's first micro-distillery and retail tasting room. Premium gins, vodkas, and specialty elixirs are skillfully handcrafted in small batches using local organic ingredients. Sustainable refining methods enhance the natural flavours and unique character of each collection.

Robson shoppers, rejoice! Crate and Barrel's small-spaces offshoot **CB2** (1277 Robson St., 604-669-9797. Cb2.com) specializes in mod (but affordable) décor, accessories, and home basics. For a casual chic style to match, **J.Crew** (1088 Robson St., 604-684-2367. Jcrew.com) stocks limited-edition collections for women, and the famed Ludlow suit for men. For an impressive selection of luxury-label cosmetics, skin care, and fragrances, stop at **Shifeon Beauty** (1291 Robson St., 604-688-3291. Shifeon.com).

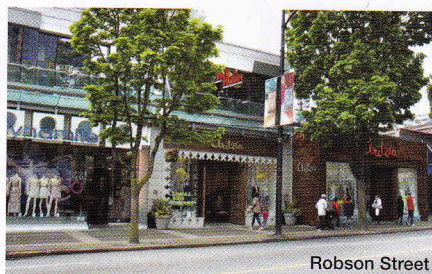
Luxury resides at **Burrard and Alberni**, where destination brands like Cartier, Coach, Louis Vuitton, St. John, and Gucci neighbour hotel lobbies and cruise ships. In the haute **1000-1200 blocks of Alberni**,



Long Table Distillery



Thierry



Robson Street

preppy Brooks Brothers and B rival slim and slinky Escada. Canadian master **M0851** (1035 Alberni St., 604-688-9575. M0851.com) pe modernist, full-grain leather v sleek bombers and calf-skin ca

The legendary French luxury house **Hermès** (755 Burrard St., 604-681-9965. Hermes.com) is right across from **Tiffany & Co.** (755 Burrard St., 604-630-1300. Tiffany.com). Channel old Hollywood browsing for diamonds à la A Hepburn before strolling over to ogle a crocodile (Grace) Kelly

Thierry (1059 Alberni St., 604-687-0687. Thierrychocolates.com) is a preferred resting spot for those in need of a restorative pain au chocolat. Go for pastry chef Thierry Busset's perfect apple tarts, a palmier, or a multi-coloured macaron. Hit the shop for late-night beers; they're open till midnight and offer \$5 glass Stanley Park Ale.

Dapper jetsetters staying at the newly restored Hotel Georgia spend their day at **Bel Café** (801 W. C St., 604-673-7000. Belcafe.com) chic room that riffs on the boulevards of Paris. Find breakfast sandwiches stuffed with organic egg back bacon, and gruyère (\$6.1) and a brilliant case of croissant pound cakes, and tarts for after

Drop by **Christ Church Cathedral** (690 Burrard St., 604-682-3848. Cathedral.vancouver.bc.ca) every Sunday evening at 9:30 to eavesdrop on the traditional Gregorian chant. Built in 1888, the cedar and Douglas fir interior helps the massive organ resonate. It's the church the British royal family attends when in town.

Civic centre **Robson Square** (between Hornby and Howe streets) was set to be the tallest building in town until visionary architect A. Erickson suggested laying it on its back. As a result, you can walk over this three block monument from the glass enclosed law courts to the public ice rink.



MARKETPLACE

233 Robson St.

\$430,000

MAINTENANCE FEE

\$232

SPECS

643 sq. ft., one bedroom plus den, one bath; building has 24-hr. concierge, exercise centre, hot tub, and includes parking. Newly upgraded and ready to move in.