



ARTISAN

*by*  
Bodo Sperlein

**Coordonné**



# ARTISAN

by Bodo Sperlein



*“THIS COLLECTION SHOWS MY MOST ARTISTIC AND INTIMATE SIDE, as I was able to experiment with the patterns of nature through various artistic techniques.”*

*“Esta colección muestra mi faceta más artística e íntima ya que he podido experimentar con diversas técnicas plásticas los patrones de la naturaleza: hojas, dunas, montañas, y cualquier textura relacionada con lo orgánico”.*

*Introducing Artisan, a captivating collection of wallpapers, murals and textiles designed by London-based designer Bodo Sperlein for Coordonné. A new and exciting chapter in Bodo's creative journey that continues to showcase the versatility of his designs and his commitment to innovation.*

*Bodo transforms three-dimensional shapes into a two-dimensional medium, with materials and techniques such as watercolours, graphite, chalk and even collage which contribute to give a unique aesthetic to the collection.*

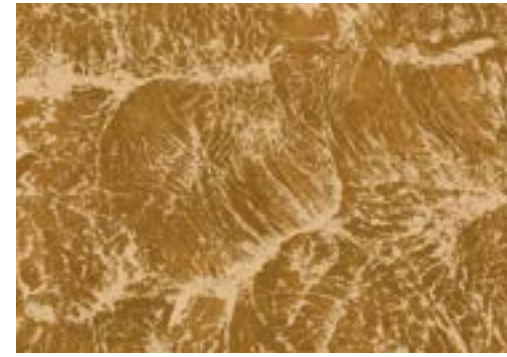
Presentamos Artisan, una cautivadora colección de papeles pintados, murales y textiles diseñados por el diseñador londinense Bodo Sperlein para Coordonné. Un capítulo nuevo y emocionante en el viaje creativo de Bodo que continúa mostrando la versatilidad de sus diseños y su compromiso con la innovación.

Bodo transforma formas tridimensionales en un medio bidimensional, con materiales y técnicas como acuarelas, grafito, tiza e incluso collage que contribuyen a darle una estética única a la colección.

## WALLCOVERINGS/ PAPELES PINTADOS

**sepia.**  
REF. B00200

pg. 04-11



**brush.**  
REF. B00207

pg. 12-19



**graphite.**  
REF. B00213

pg. 20-27



**collage.**  
REF. B00219

pg. 28-36



**fluid.**  
REF. B00226

pg. 37-44



**calligraphy.**  
REF. B00232

pg. 45-52



**fold.**  
REF. B00238

pg. 53-59



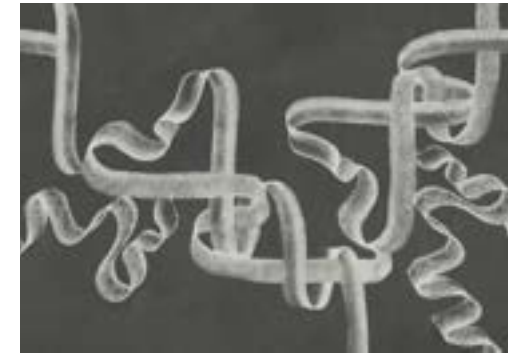
**torn.**  
REF. B00242

pg. 60-67



**ribbon.**  
REF. B00247

pg. 68-74



**drapery.**  
REF. B00251

pg. 75-80



## MURALS/ MURALES

MADE TO  
MEASURE  
Servicio a Medida

*At Coordonné we transform spaces, giving each one a unique personality. Every project is exclusive. We offer a service for designing made to measure projects, fulfilling the requirements of our clients.*

*En Coordonné transformamos los espacios dotándolos de una personalidad única. Conseguimos que cada proyecto sea exclusivo ofreciendo un servicio de diseño y adaptación a medida para cumplir con las necesidades de cada cliente.*

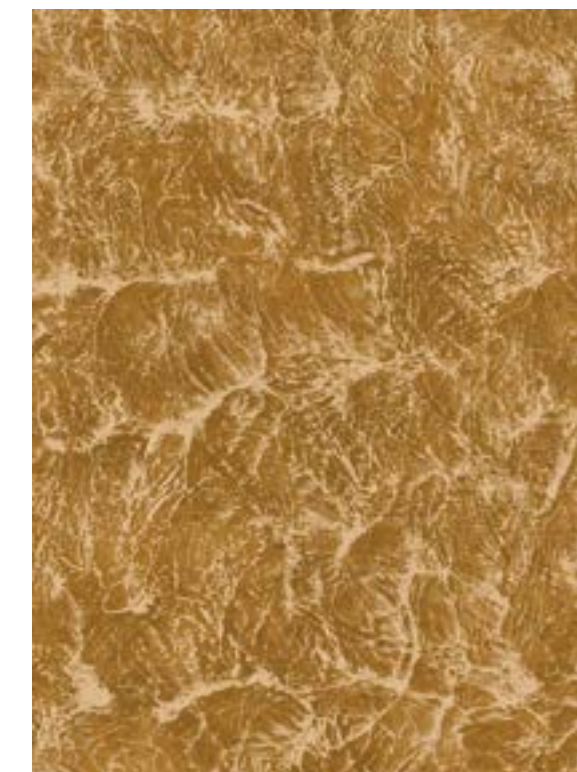
artisan\_by\_Bodo Sperlein

# sepia.

THIS PATTERN DRAWS PARALLELS WITH 18<sup>TH</sup> CENTURY COPPER PLATE PRINTS.

Diseño que establece paralelismos con grabados en planchas de cobre.

Ref. B00200 Roll Size:  
0,5 x 10 mts / 19,7" x 11 yd



Offset Match   
70 cm / 27,5"

Ref. B00200

Design available in Non Woven (N) quality  
Diseño disponible en la calidad Non Woven (N)



Ref. B00201—p. 06



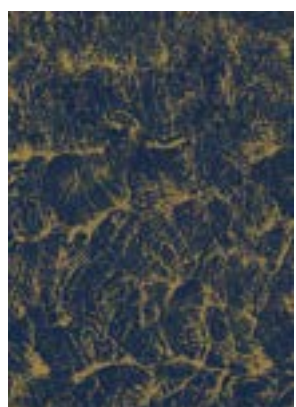
Ref. B00202—p. 07



Ref. B00203—p. 08



Ref. B00204—p. 09



Ref. B00205—p. 010



Ref. B00206—p. 11

TOTAL  
LOOK



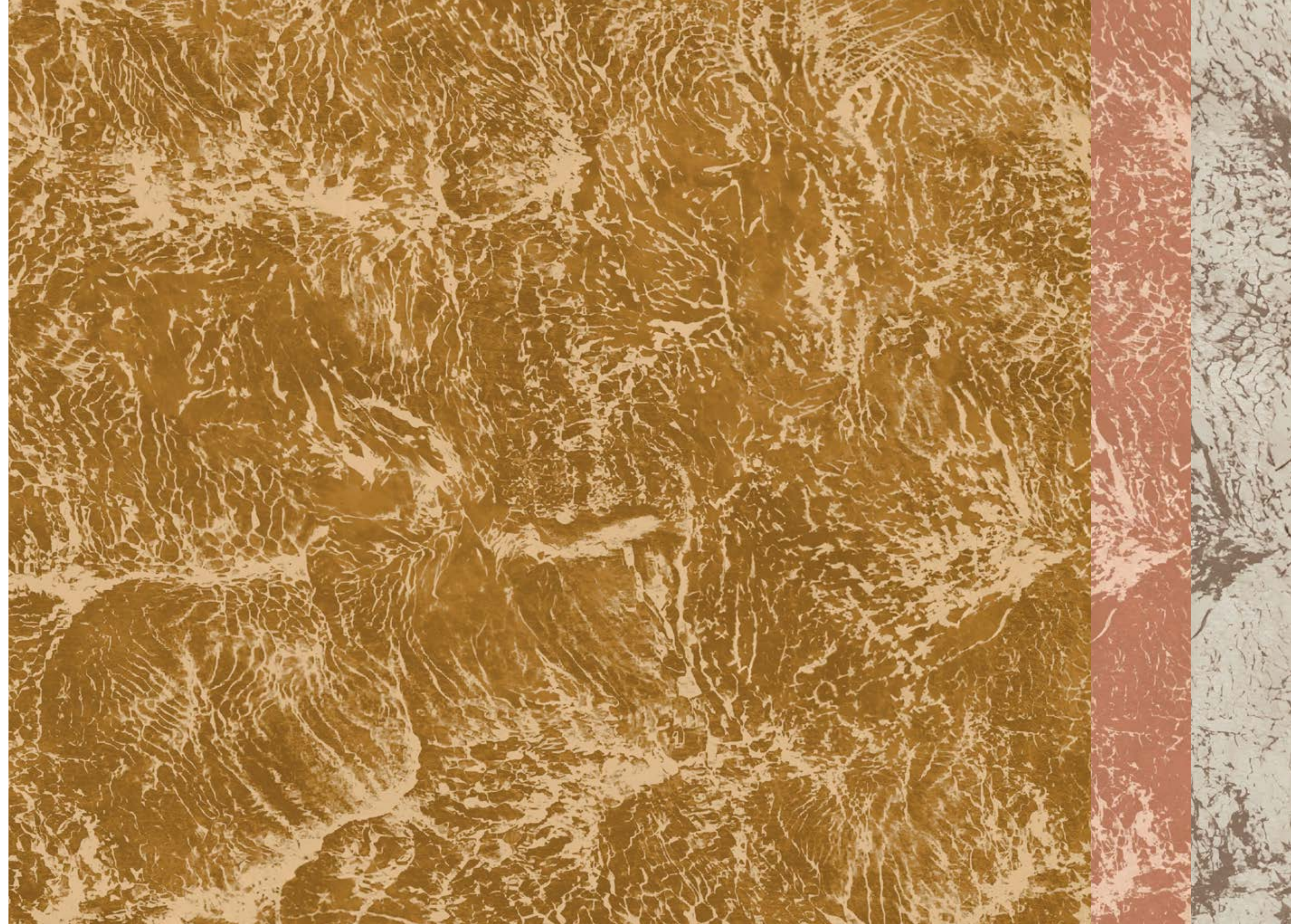
Curry — Ref.048B

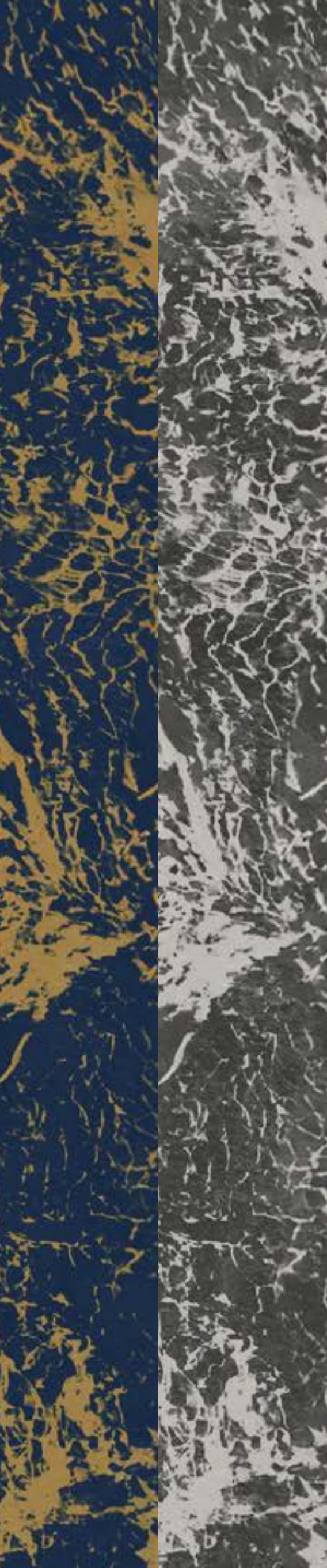
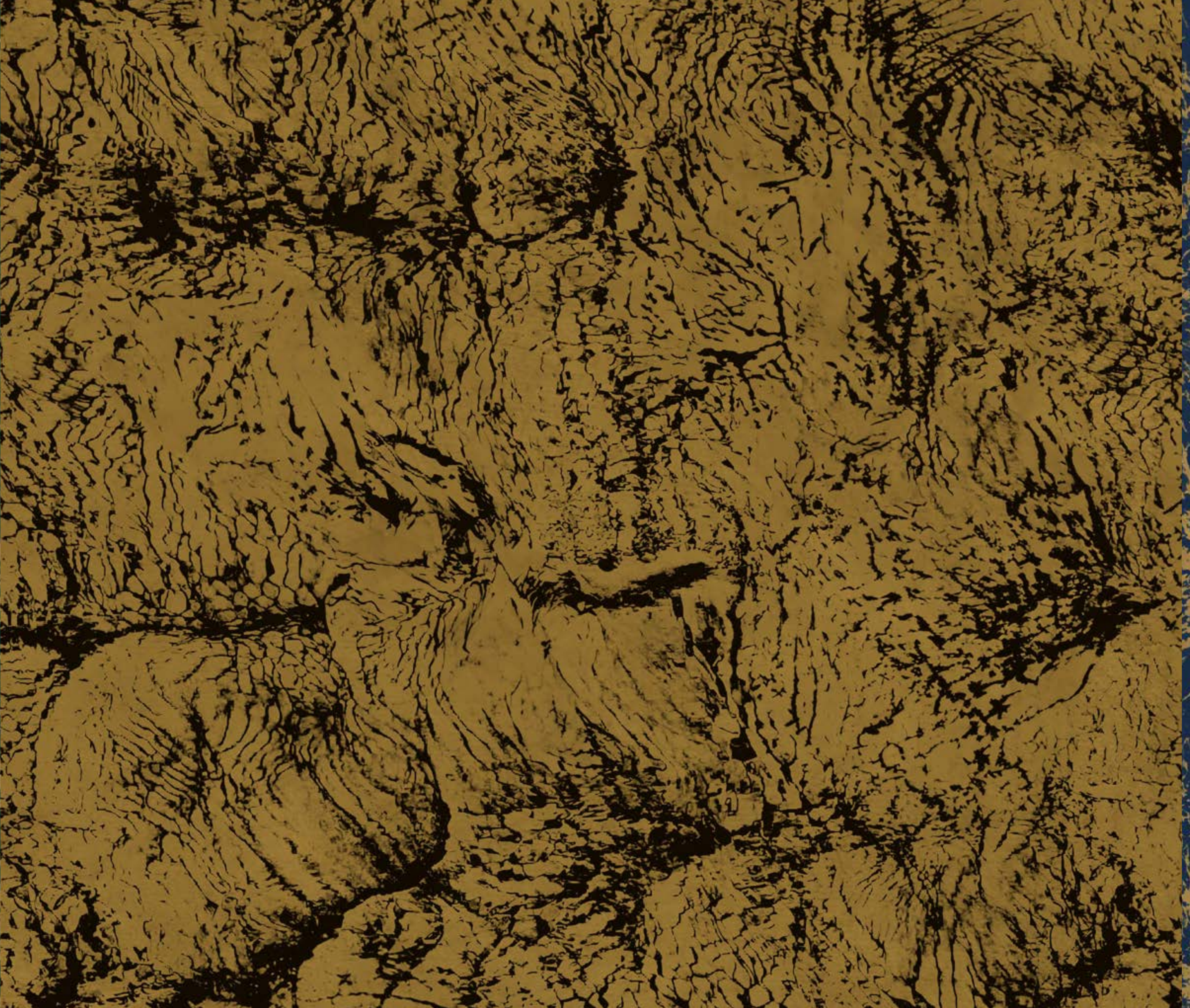
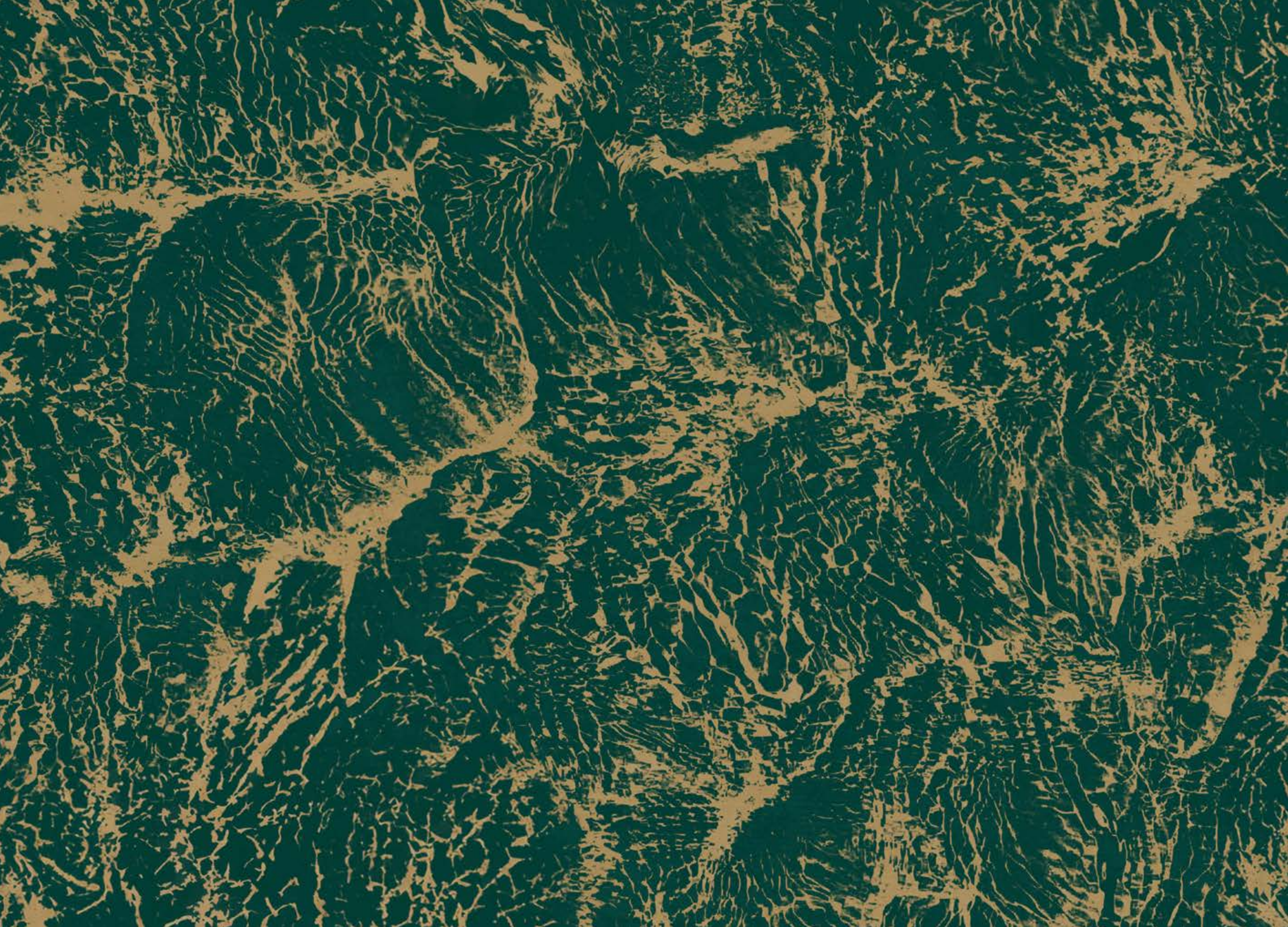
Coral — Ref.052B



Hueso — Ref.024A

Parra — Ref.099C





# brush.

*AN INTERPLAY  
OF FORM AND  
FREEDOM.*

Una interacción entre  
forma y libertad.

*Dots enhanced by subtle  
brush strokes in a dynamic  
arrangement.*

Círculos realizados por  
sútiles pinceladas en una  
dinámica disposición.



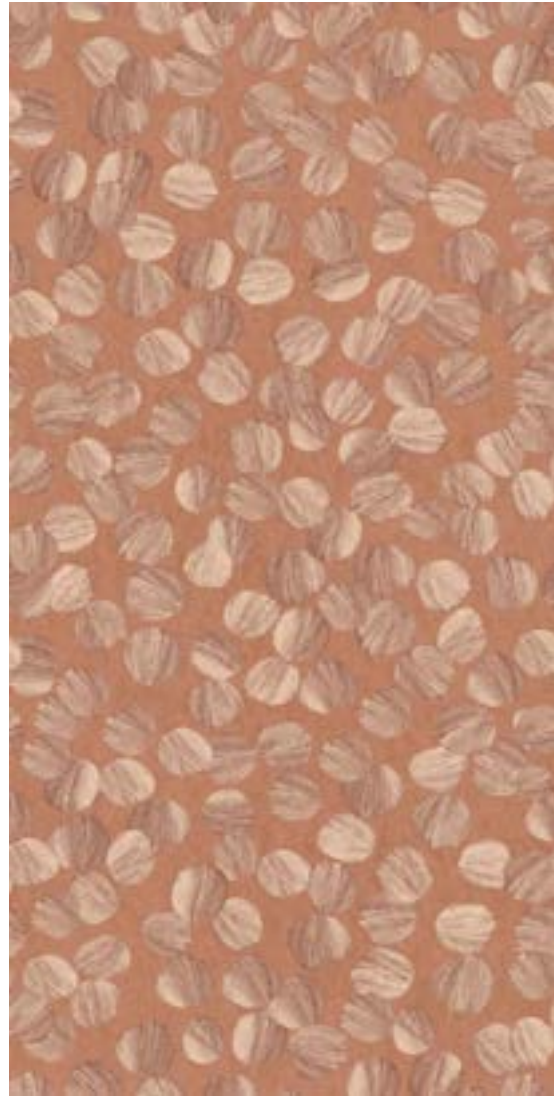
Ref. B00207

artisan\_by\_Bodo Sperlein

# brush.

Design available in Non Woven (N) quality  
Diseño disponible en la calidad Non Woven (N)

Ref. B00207 Roll Size:  
0,5 x 10 mts / 19,7' x 11 yd



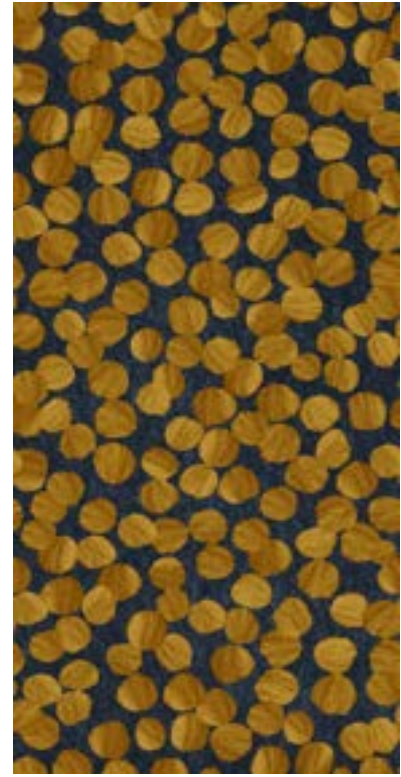
Offset Match  
100 cm / 39,4"



Ref. B00208—p. 15



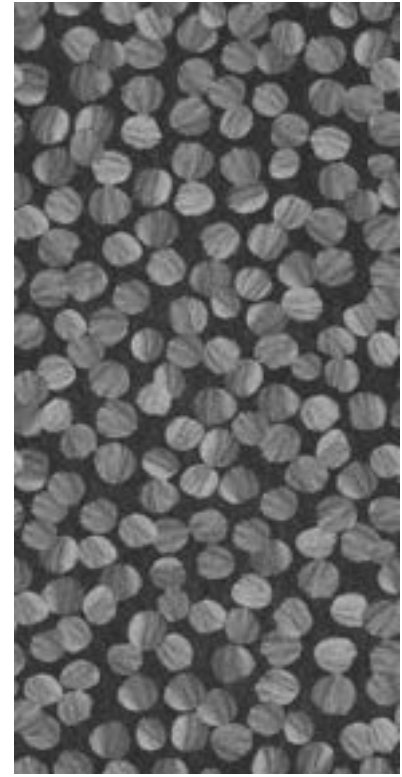
Ref. B00209—p. 16



Ref. B00210—p. 17



Ref. B00211—p. 18



Ref. B00212—p. 19



Alga — Ref.089C Terracota — Ref.056B Galaxia — Ref.080C Cristalino — Ref.071A Plomo — Ref.020B

TOTAL  
LOOK







# graphite.

*A METICULOUS  
GRAPHITE DRAWING  
WITH NUANCED  
TEXTURES.*

Minucioso dibujo  
en grafito de  
texturas matizadas.

*An elegant arrangement  
of wavy ribbons inspired  
by 1920's Art Deco.*

Elegantes cintas  
onduladas inspiradas  
en el Art Déco.



Ref. B00213

artisan\_by\_Bodo Sperlein

# graphite.

Design available in Non Woven (N) quality  
Diseño disponible en la calidad Non Woven (N)

Ref. B00213 Roll Size:  
0,5 x 10 mts / 19,7" x 11 yd



Repeat: 58,6 cm / 23"

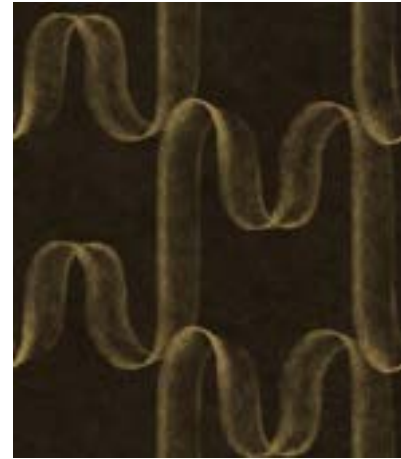
Straight Match



Ref. B00214—p. 23



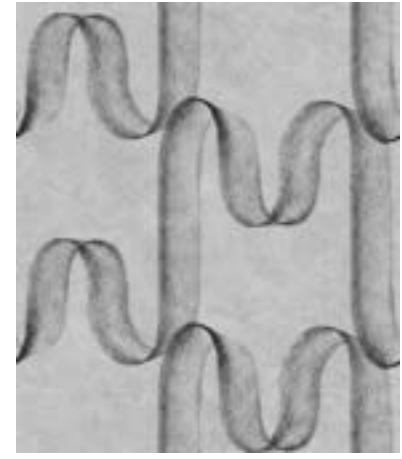
Ref. B00215—p. 24



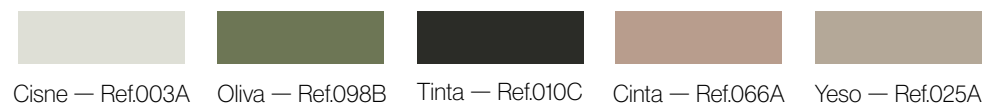
Ref. B00216\_p. 25



Ref. B00217—p. 26



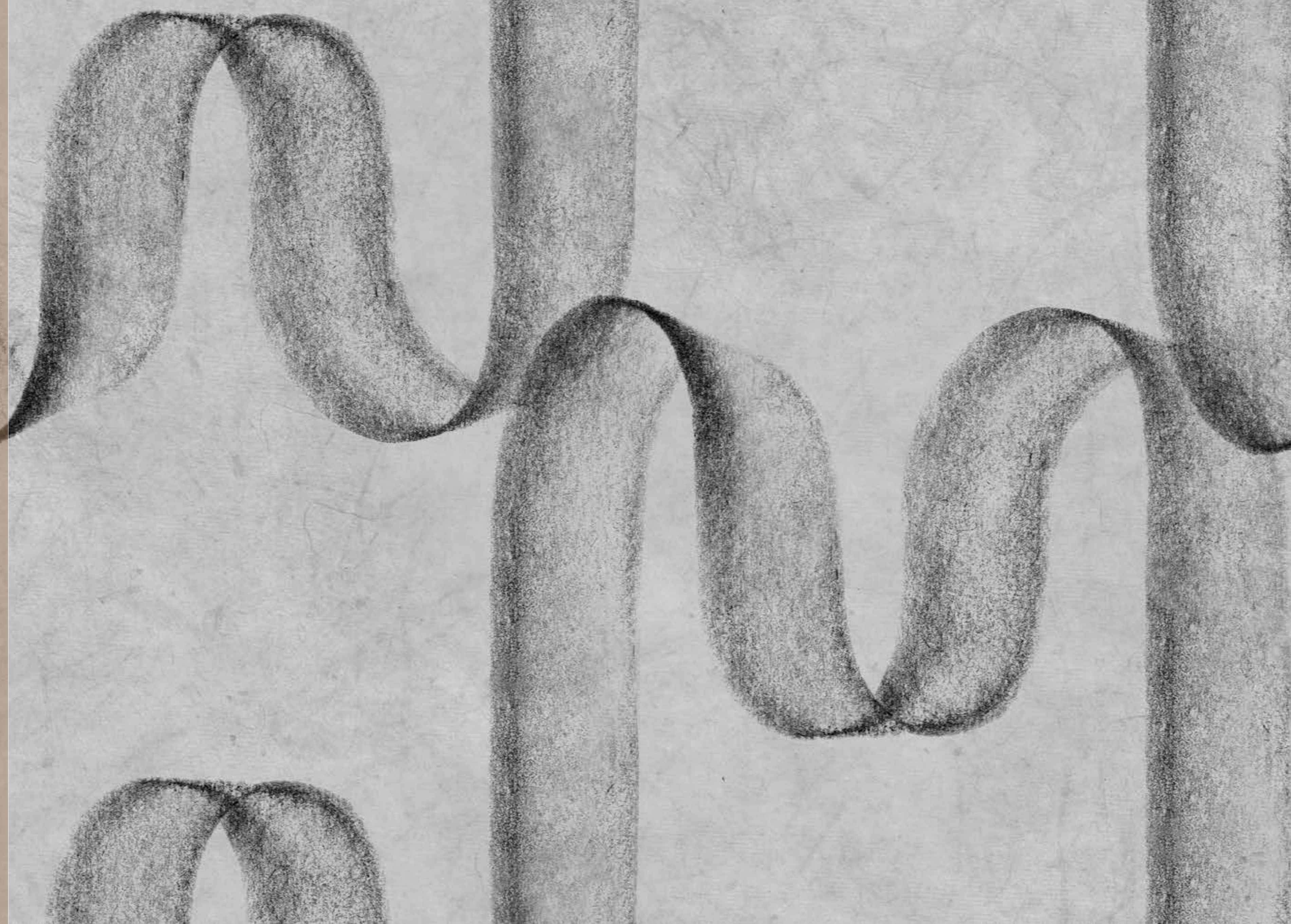
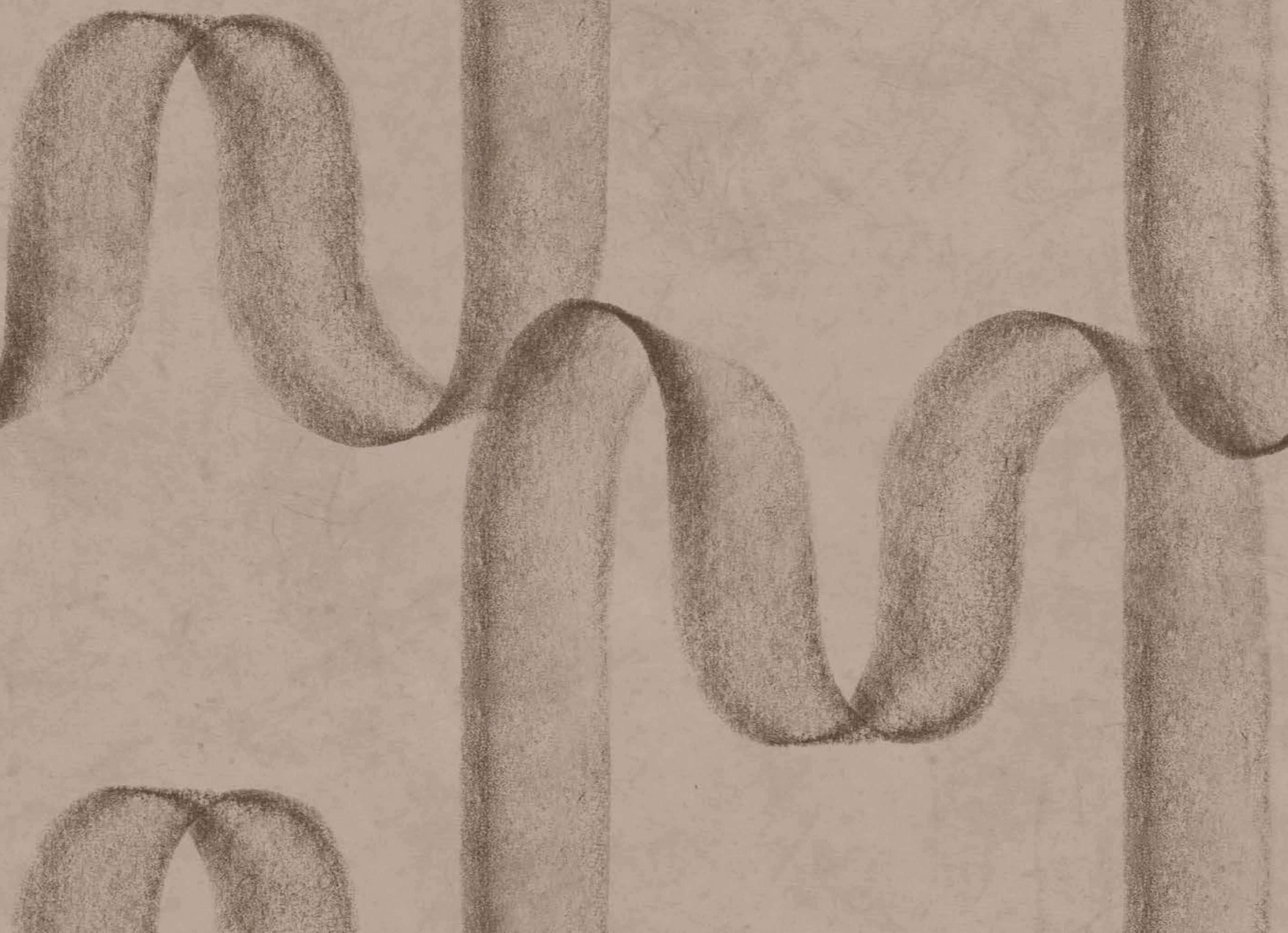
Ref. B00218—p. 27



Cisne — Ref.003A Oliva — Ref.098B Tinta — Ref.010C Cinta — Ref.066A Yeso — Ref.025A

TOTAL  
LOOK





# collage.

*AN ABSTRACT  
INTERPRETATION OF  
UNDERSEA FORESTS.*

Una interpretación abstracta  
de mundos submarinos.

*Watercolour and ink  
techniques capture the  
movement of seaweed  
underwater.*

Técnicas de acuarela y tinta  
que capturan el movimiento  
de las algas bajo el agua.



Ref. B00219

artisan\_by\_Bodo Sperlein

# collage.

Design available in Non Woven (N) quality  
Diseño disponible en la calidad Non Woven (N)

Ref. B00219 Roll Size:  
0.5 x 10 mts / 19.7' x 11 yd



Repeat: 74.4 cm / 29.3"

Straight Match



Ref. B00220—p. 31



Ref. B00221—p. 32



Ref. B00222—p. 33



Ref. B00223—p. 34



Ref. B00224—p. 35



Ref. B00225—p. 36



Anil — Ref.079B



Parra — Ref.099C



Crema — Ref.041A



Goya — Ref.047B



Nacar — Ref.014A

TOTAL  
LOOK







# fluid.

*BOLD STROKES  
OF INK LINES.*

Atrevidos trazos  
de líneas de tinta.

*A modern design of  
abstract forms of plants,  
leaves and trees.*

Un diseño moderno de  
formas abstractas de  
plantas, hojas y árboles.



Ref. B00226

# fluid.

Ref. B00226 Roll Size:  
0,5 x 10 mts / 19,7" x 11 yd



Repeat: 60 cm / 23.6"

Straight Match

Design available in Non Woven (N) quality  
Diseño disponible en la calidad Non Woven (N)



Ref. B00227—p. 40



Ref. B00228—p. 41



Ref. B00229\_p. 42



Ref. B00230—p. 43



Ref. B00231—p. 44



Alabastro — Ref.012A Tinta — Ref.010C Barril — Ref.050C Mármol — Ref.013A Nácar — Ref.014A

TOTAL  
LOOK







# calligra- phy.

*HOMAGE TO  
TRADITIONAL  
BRUSHWORK.*

Homenaje a la  
pincelada tradicional.

*Ink and watercolour style lines  
weave together to create a  
dynamic pattern, showcasing  
the art of calligraphy.*

*Líneas naturales de tinta y  
acuarela, se entrelazan para  
mostrar el arte de la caligrafía.*



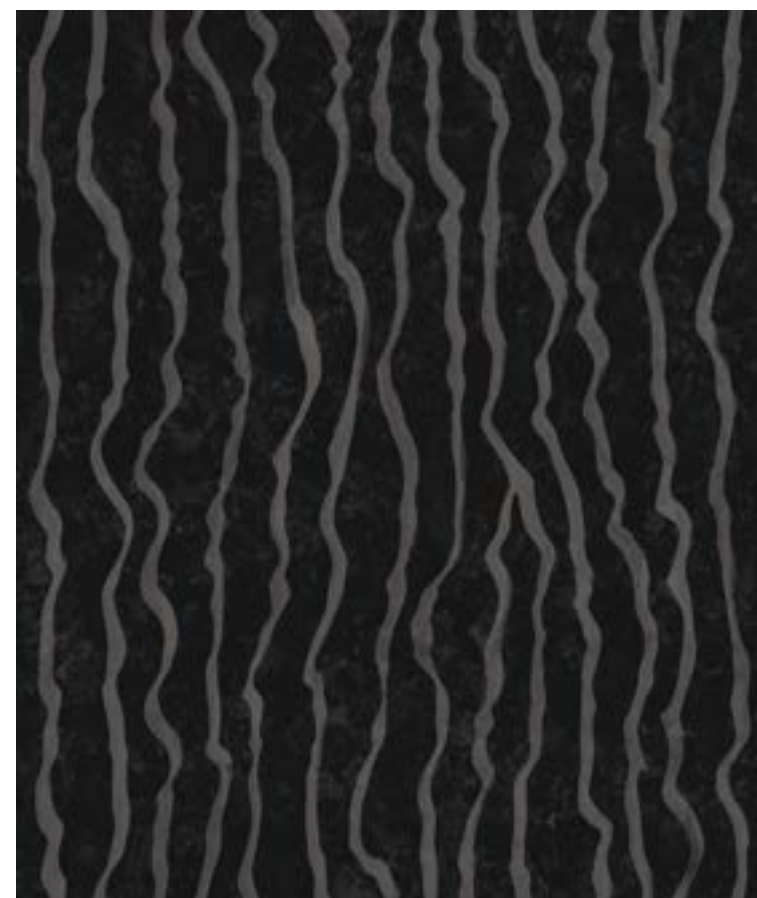
Ref. B00232

artisan\_by\_Bodo Sperlein

# calligraphy.

Design available in Non Woven (N) quality  
Diseño disponible en la calidad Non Woven (N)

Ref. B00232 Roll Size:  
0,5 x 10 mts / 19,7' x 11 yd



Offset Match   
60 cm / 23,6"



Ref. B00233—p. 48



Ref. B00234—p. 49



Ref. B00235—p. 50



Ref. B00236—p. 51

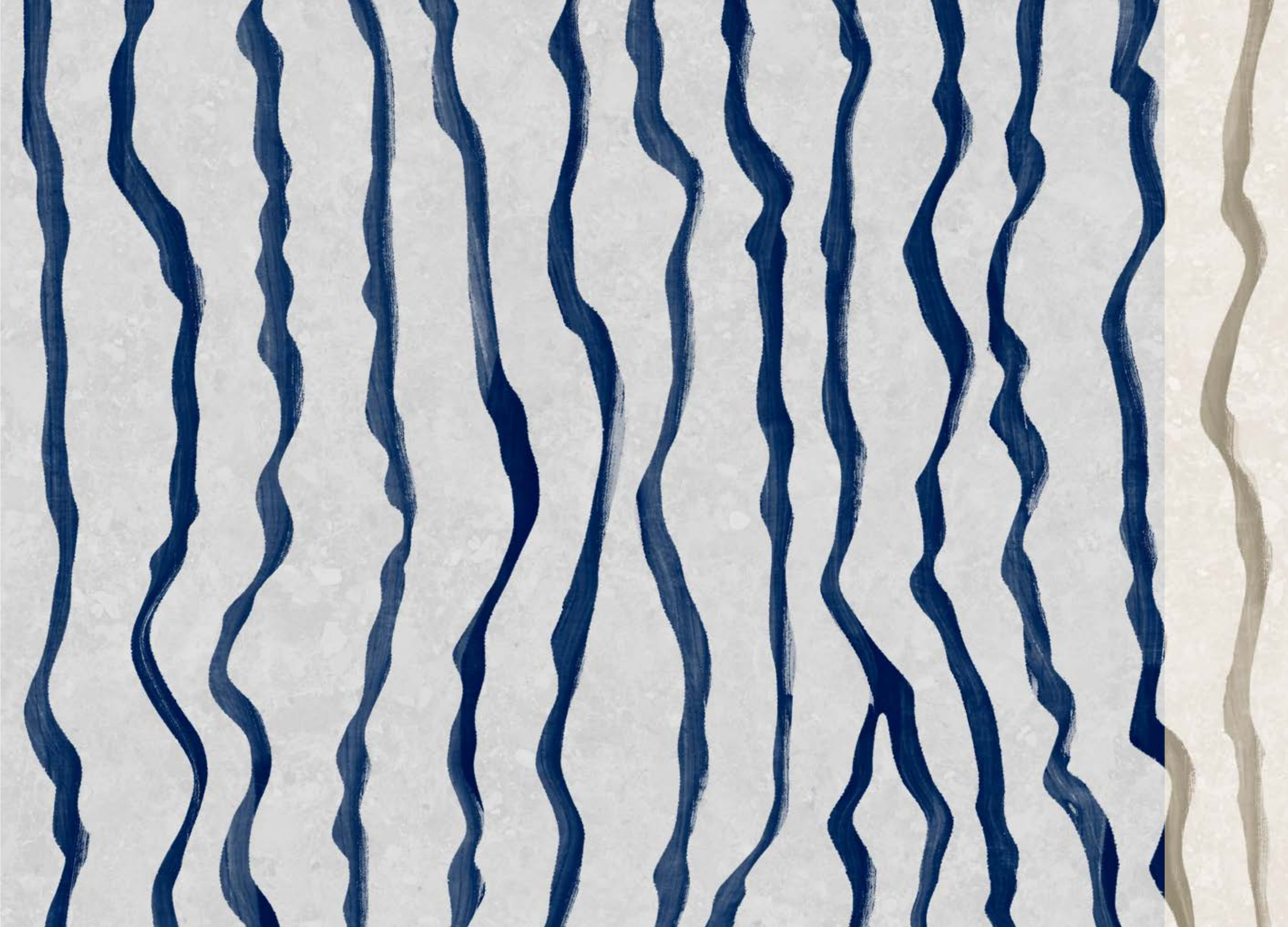
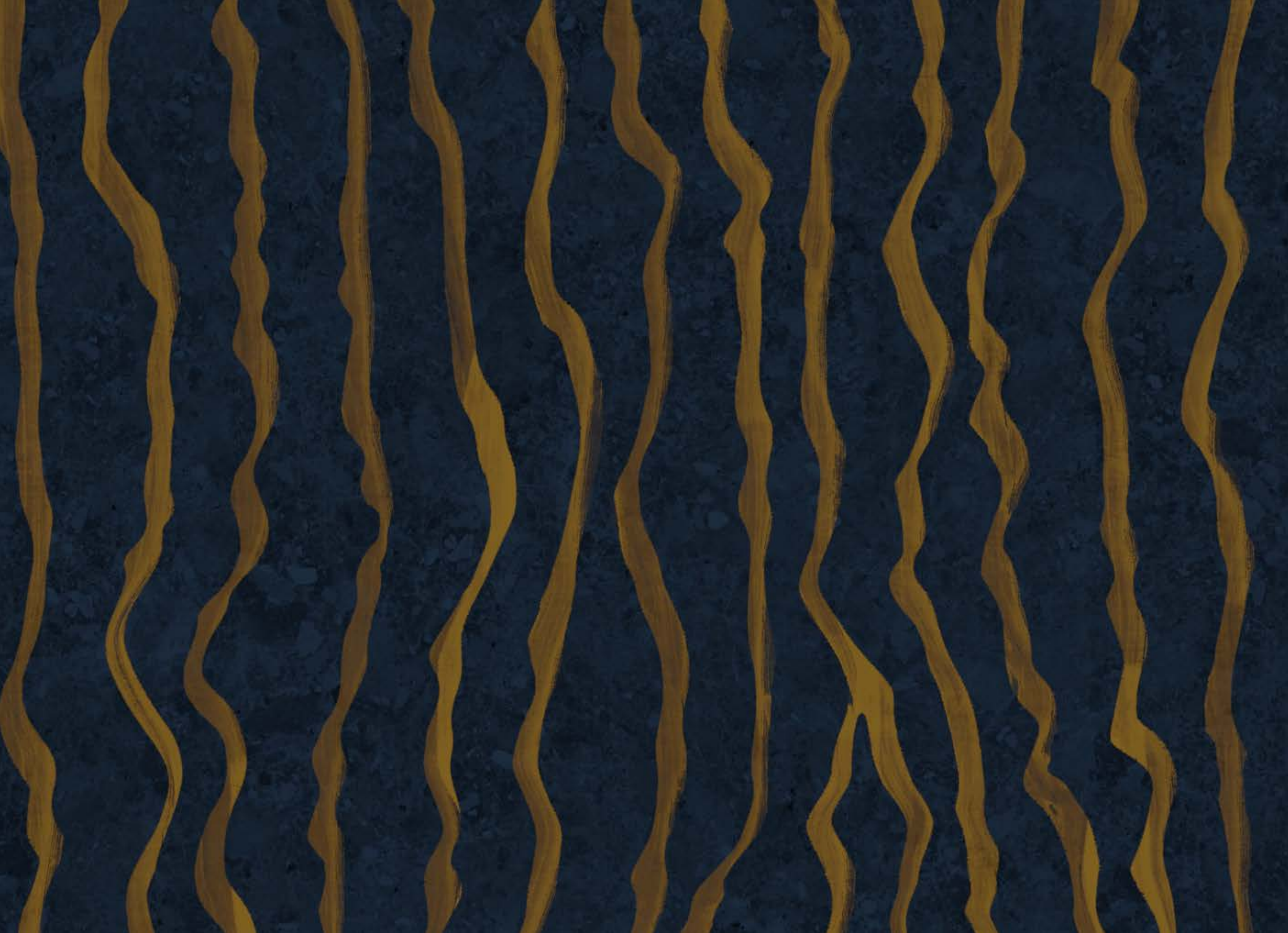


Ref. B00237—p. 52

Tinta — Ref.010C Galaxia — Ref.080C Alabastro — Ref.012A Crema — Ref.041A Nácar — Ref.014A

TOTAL  
LOOK 





*REAL SIZE*

Escala Real



artisan\_by\_Bodo Sperlein

# fold.

*CARVED FOLDS  
SEEN IN ANCIENT  
MARBLE  
SCULPTURES.*

Pliegues tallados  
encontrados en antiguas  
esculturas de mármol.

*Chalk-like surface texture  
that captures the tactile  
essence of the stone.*

Textura similar a la tiza  
que captura la esencia  
táctil de la piedra.

Ref. B00238N



P.54

# fold.

Design available in 3 different qualities Non Woven (N) Silver (S) Gold (G)  
Diseño disponible en 3 calidades diferentes Non Woven (N) Silver (S) Gold (G)



Ref. B00239S—p. 57



Ref. B00240S—p. 58



Ref. B00241G—p. 59

Standard size Mural/Medida Recomendada

Ref. B00238N



400 cm / 157,5"

Straight Match

280 cm / 110,2"

TOTAL  
LOOK



Algodón — Ref.002A

Nácar — Ref.014A

Guernica — Ref.017A

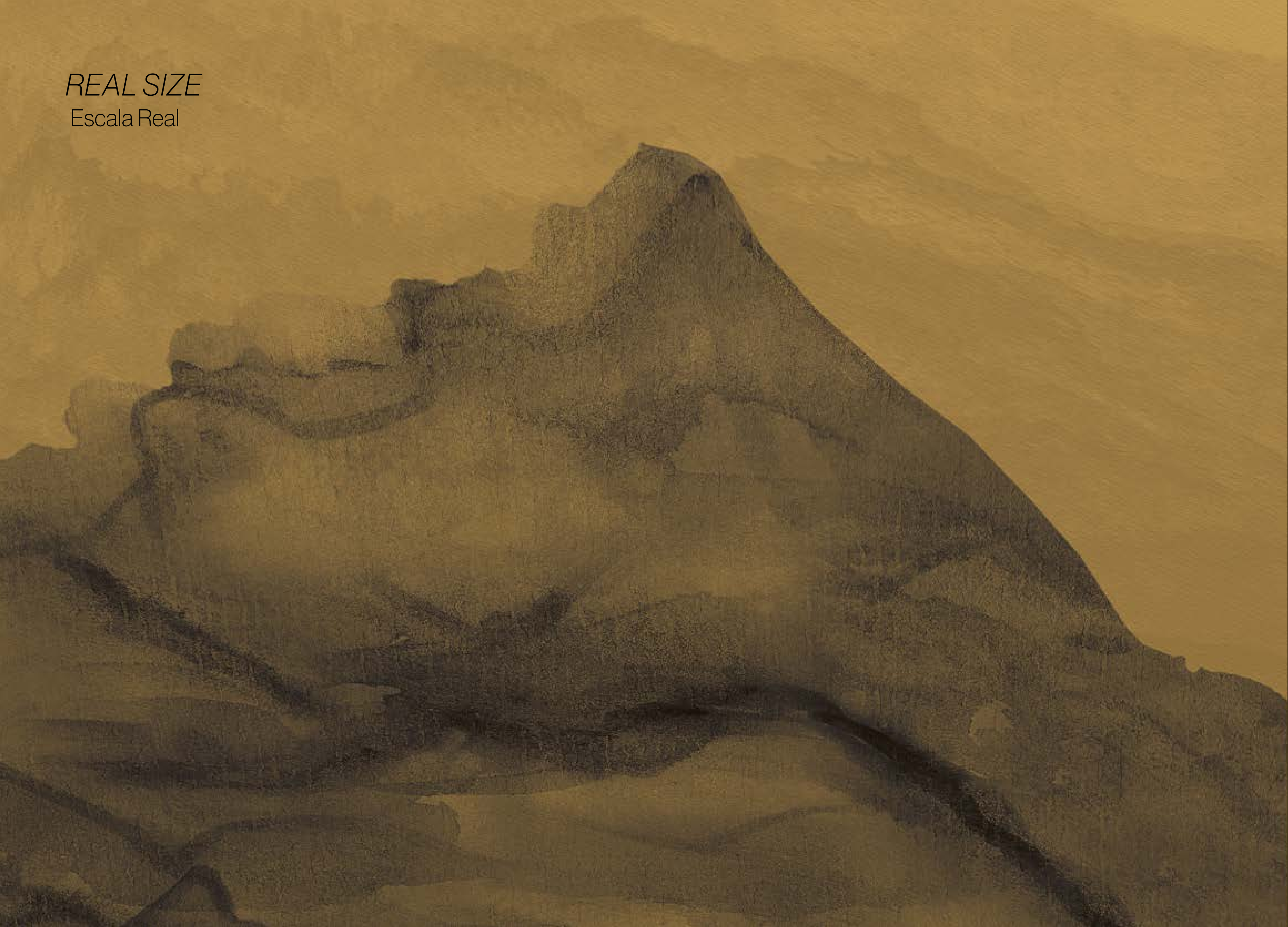
Topacio — Ref.077B

Goya — Ref.047B





REAL SIZE  
Escala Real



artisan\_by\_Bodo Sperlein

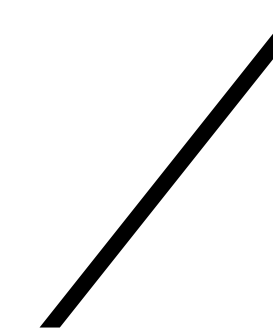
# torn.

FLUID  
WATERCOLOUR  
AND INK BRUSH  
STROKES.

Acuarelas sinuosas  
& pinceladas de tinta.



Ref. B00242G



Minimalist panoramic view  
of mountain ranges of  
Japanese influence.

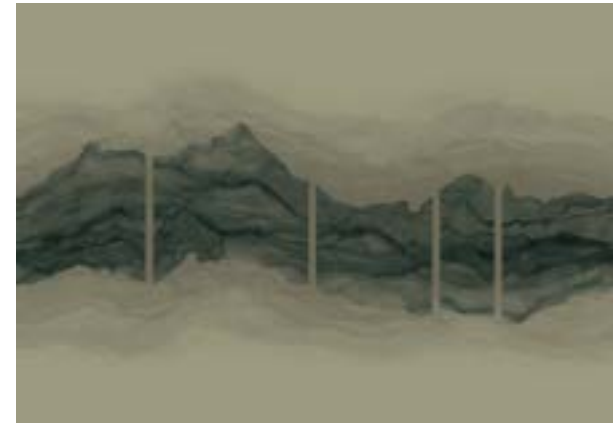
Vista panorámica  
minimalista de cadenas  
montañosas de  
influencia japonesa.



artisan\_by\_Bodo Sperlein



Ref. B00243S—p.64



Ref. B00244S—p.65



Ref. B00245S—p.66



Ref. B00246G—p.67

# torn.

Design available in 2 different qualities Silver(S) Gold (G)  
Diseño disponible en 2 calidades diferentes Silver(S) Gold(G)

Standard size Mural/Medida Recomendada

Ref. B00242G



400 cm / 157,5"

280 cm / 110,2"

TOTAL  
LOOK



Curry — Ref048B



Yeso — Ref025A



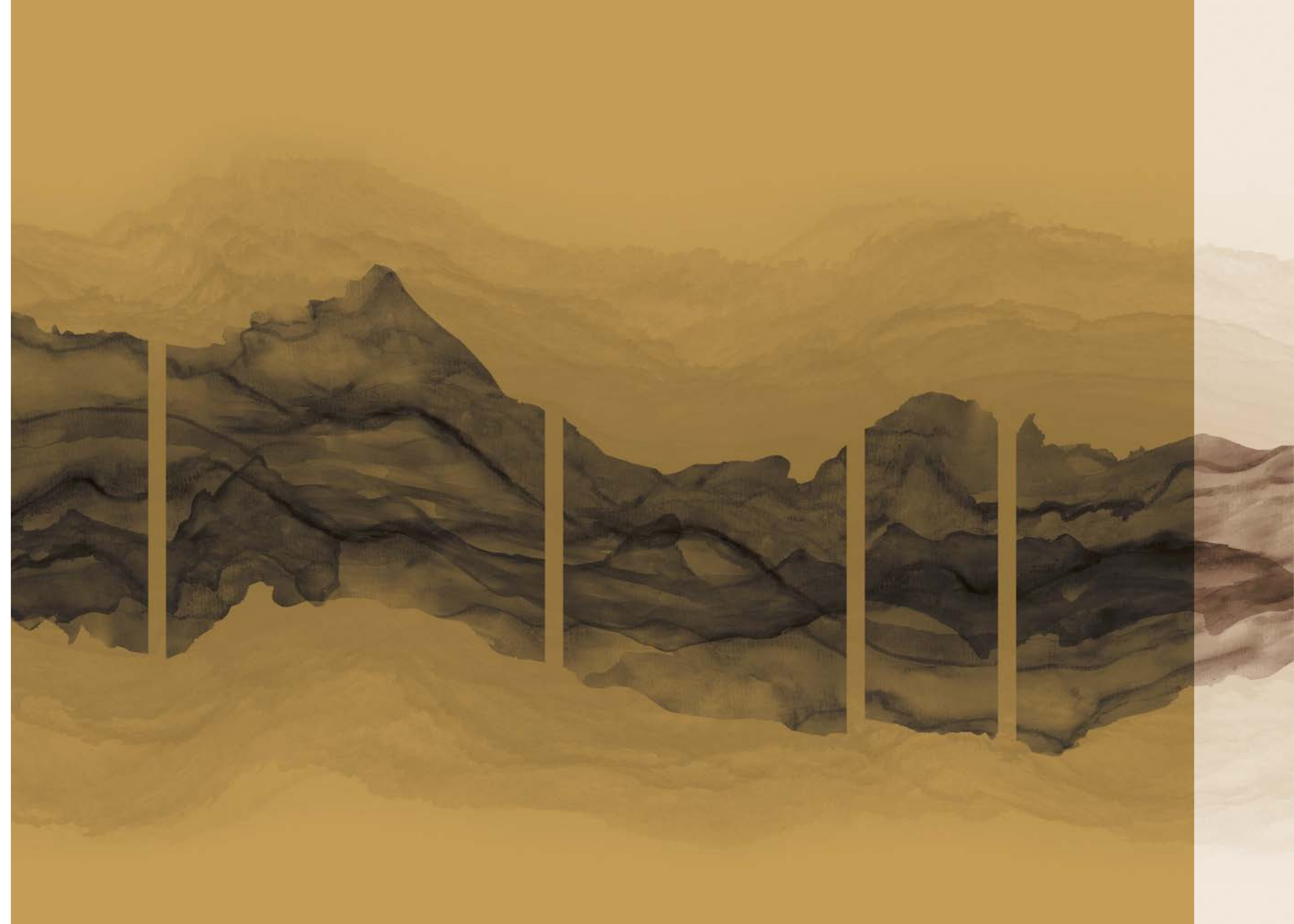
Maca — Ref082A

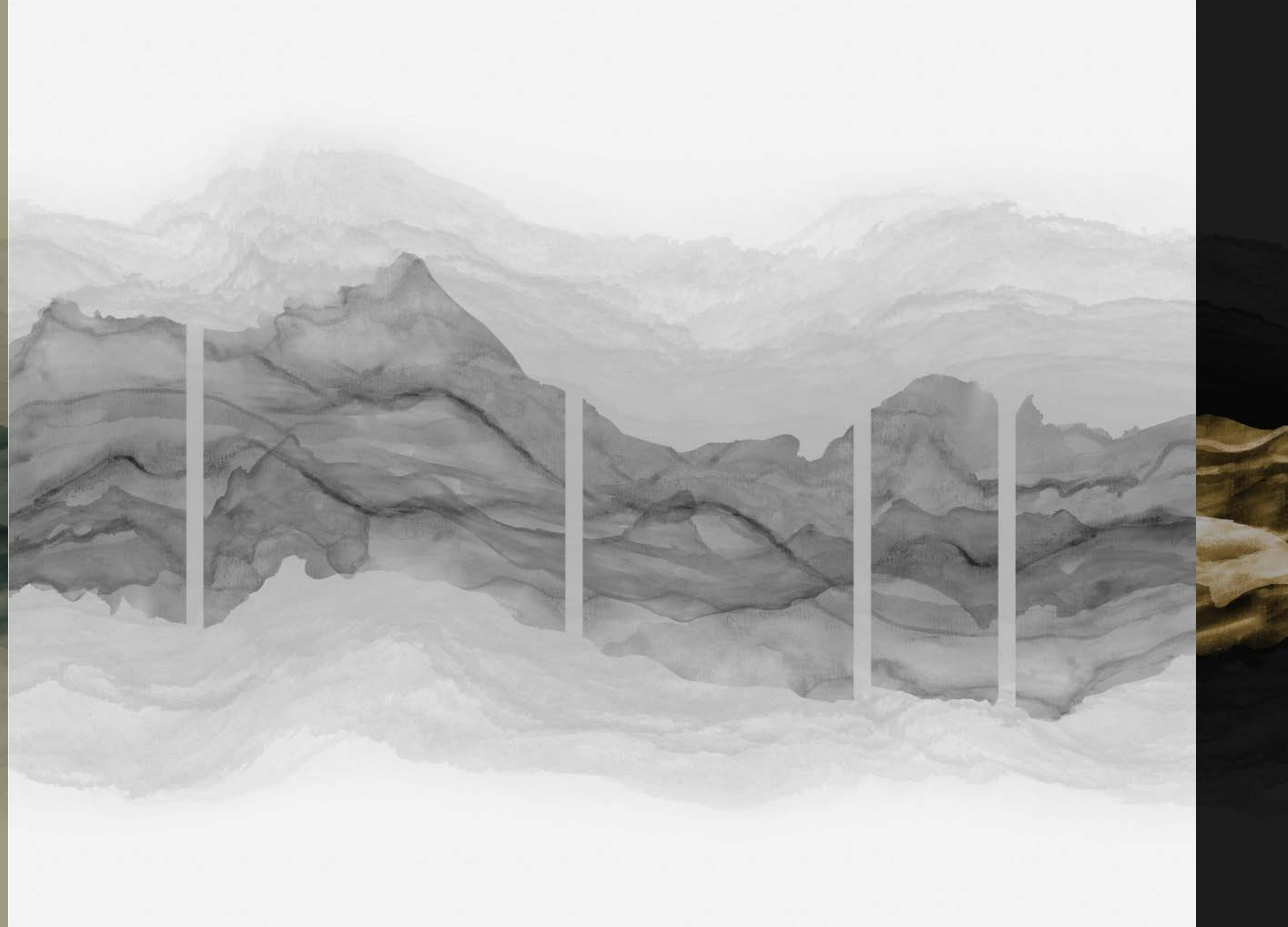
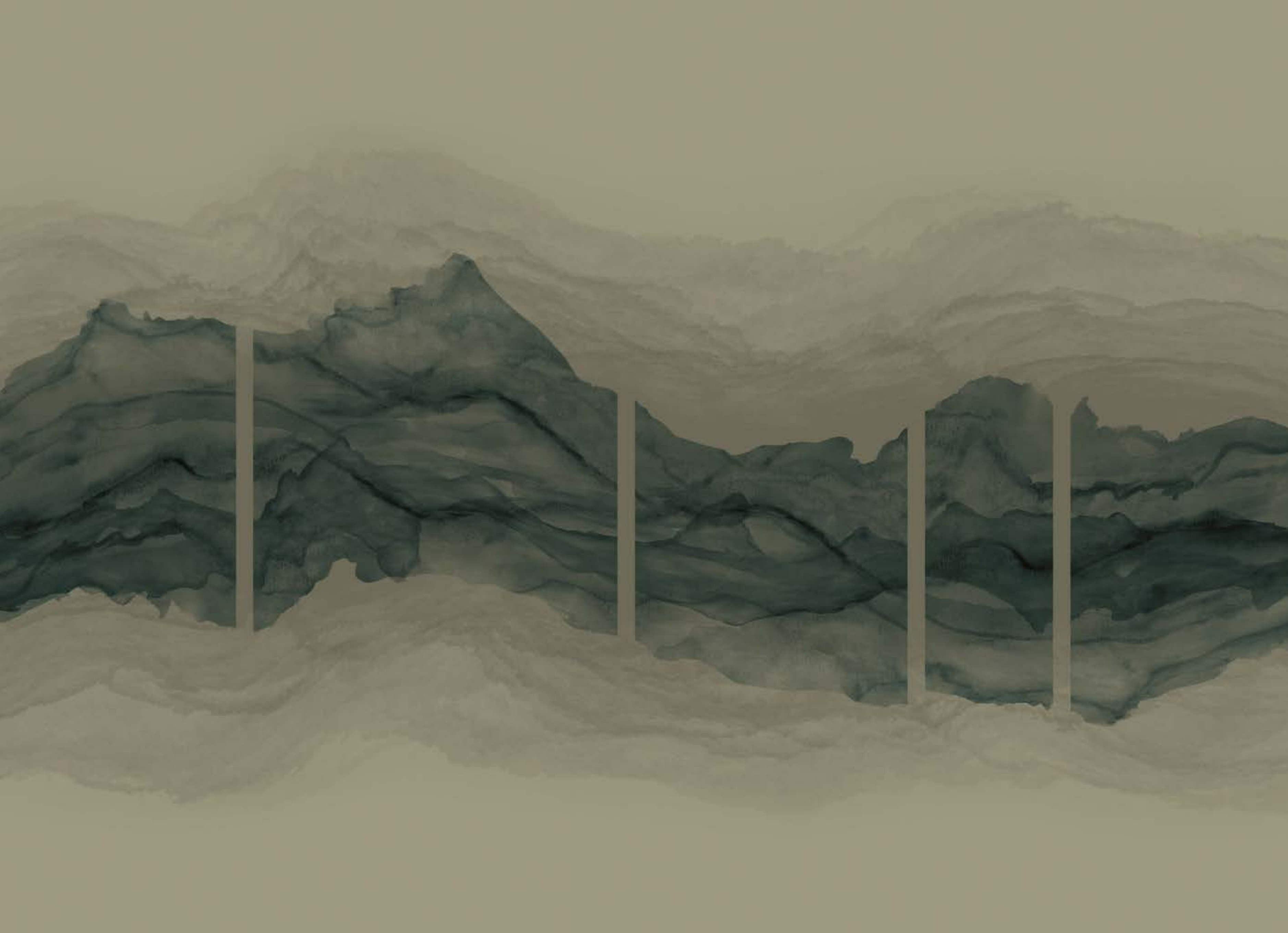


Guernica — Ref017A

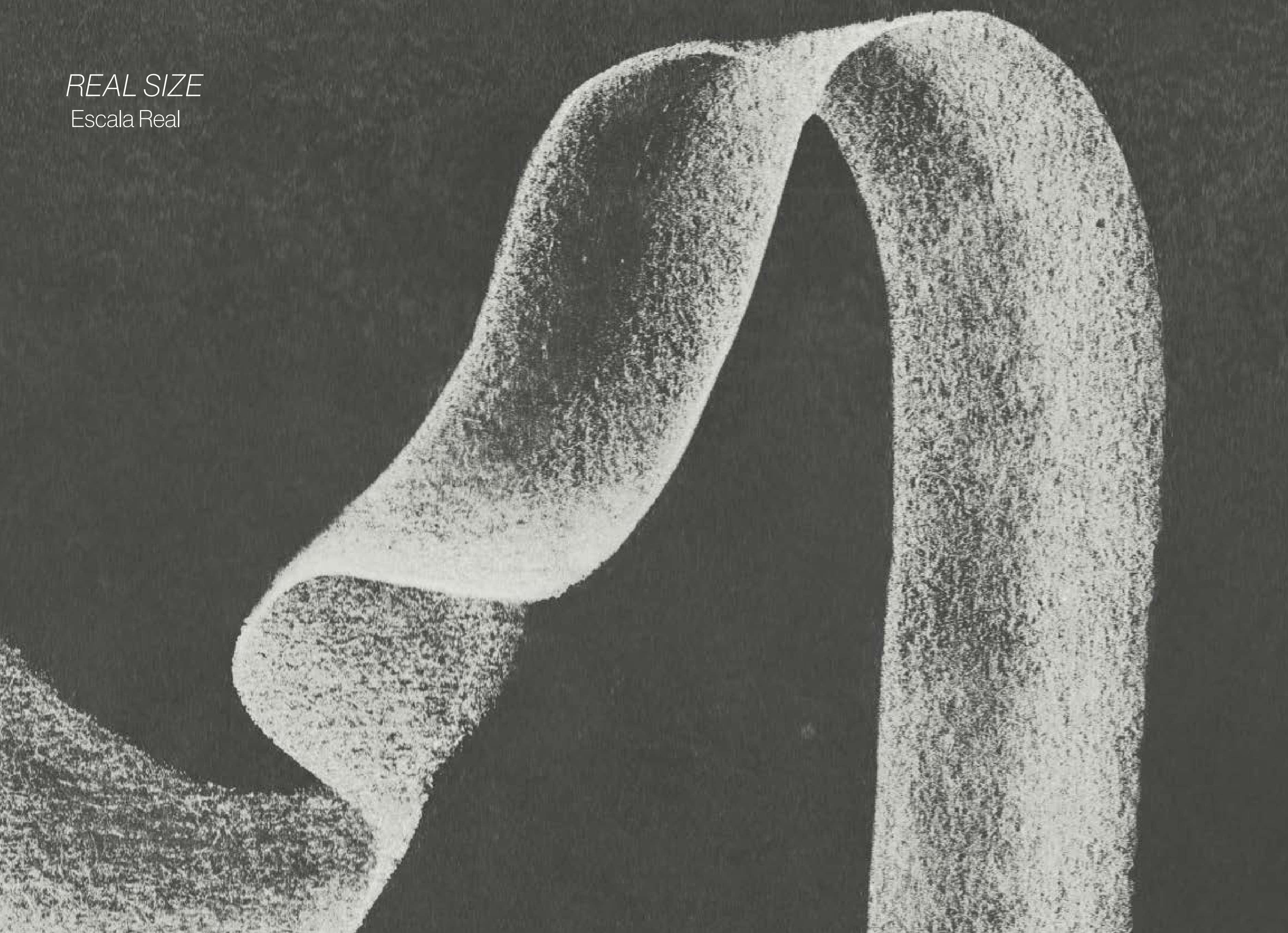


Tinta — Ref010C





REAL SIZE  
Escala Real



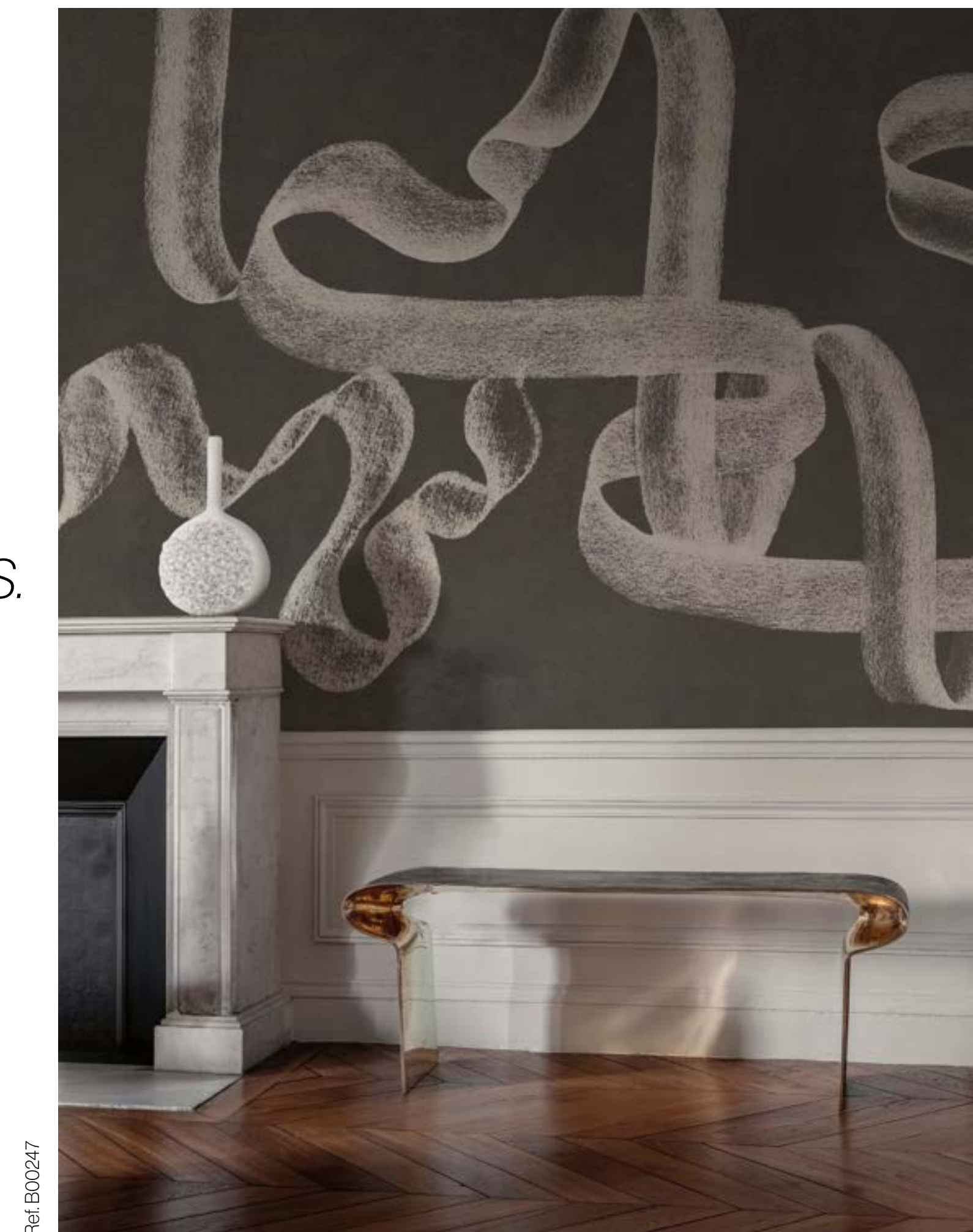
artisan\_by\_Bodo Sperlein

# ribbon.

SPONTANEOUS  
TEXTURAL  
GRAPHITE LINES.  
Espontáneas  
líneas de grafito.

*Intertwined ribbons  
that evoke movement,  
reminiscent of the style  
of Art Nouveau.*

Cintas entrelazadas que  
evocan movimiento al estilo  
Art Nouveau.



Ref. B00247

P. 69

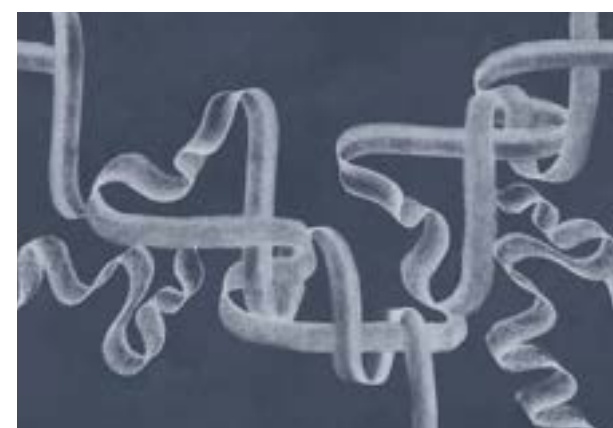
# ribbon.



Ref. B00248N—p. 72



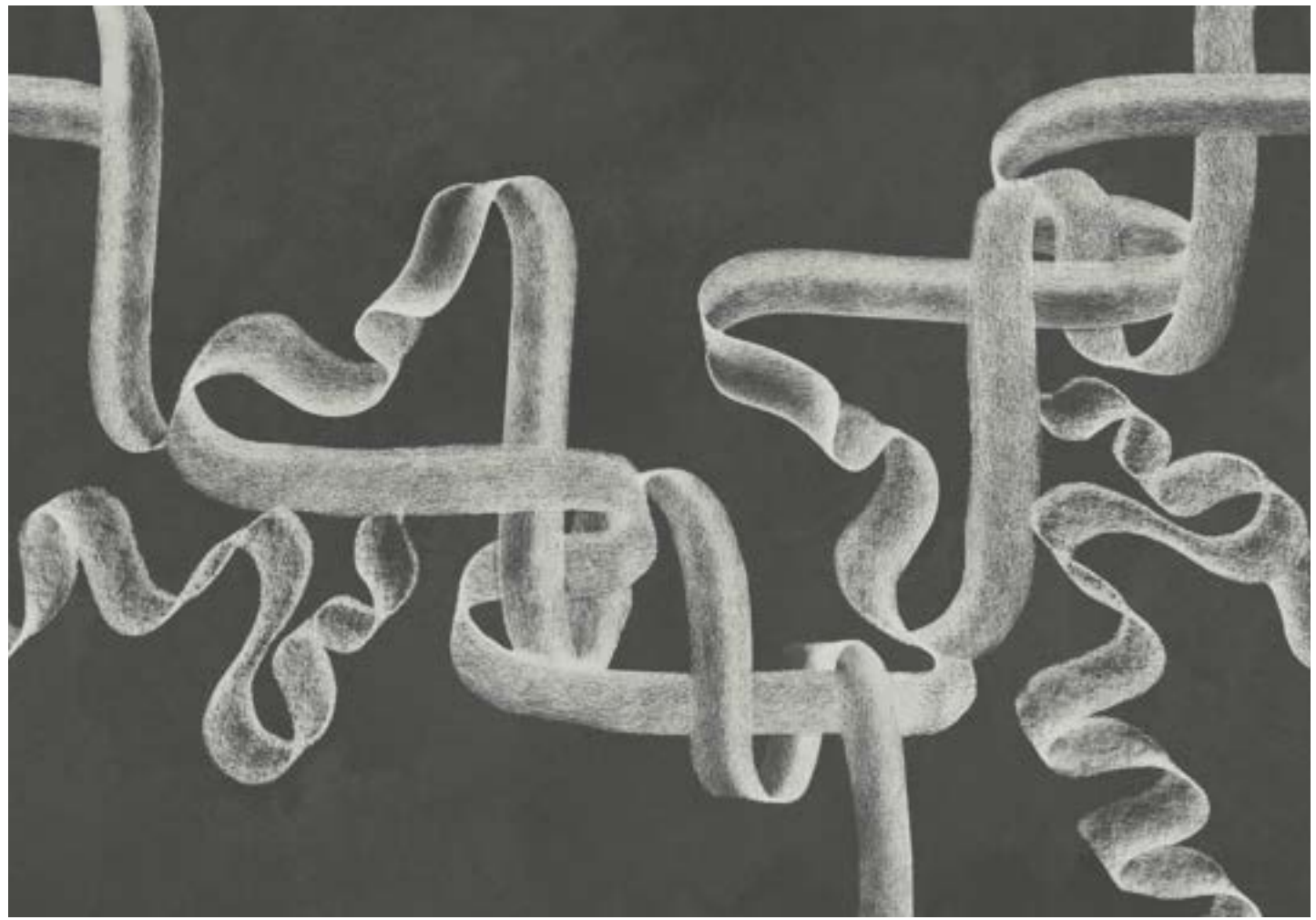
Ref. B00249N—p. 73



Ref. B00250N—p. 74

Standard size Mural/Medida Recomendada

Ref. B00247N



400 cm / 157,5"

Straight Match

280 cm / 110,2"

Design available in Non Woven(N) quality  
Diseño disponible en la calidad Non Woven(N)

TOTAL  
LOOK



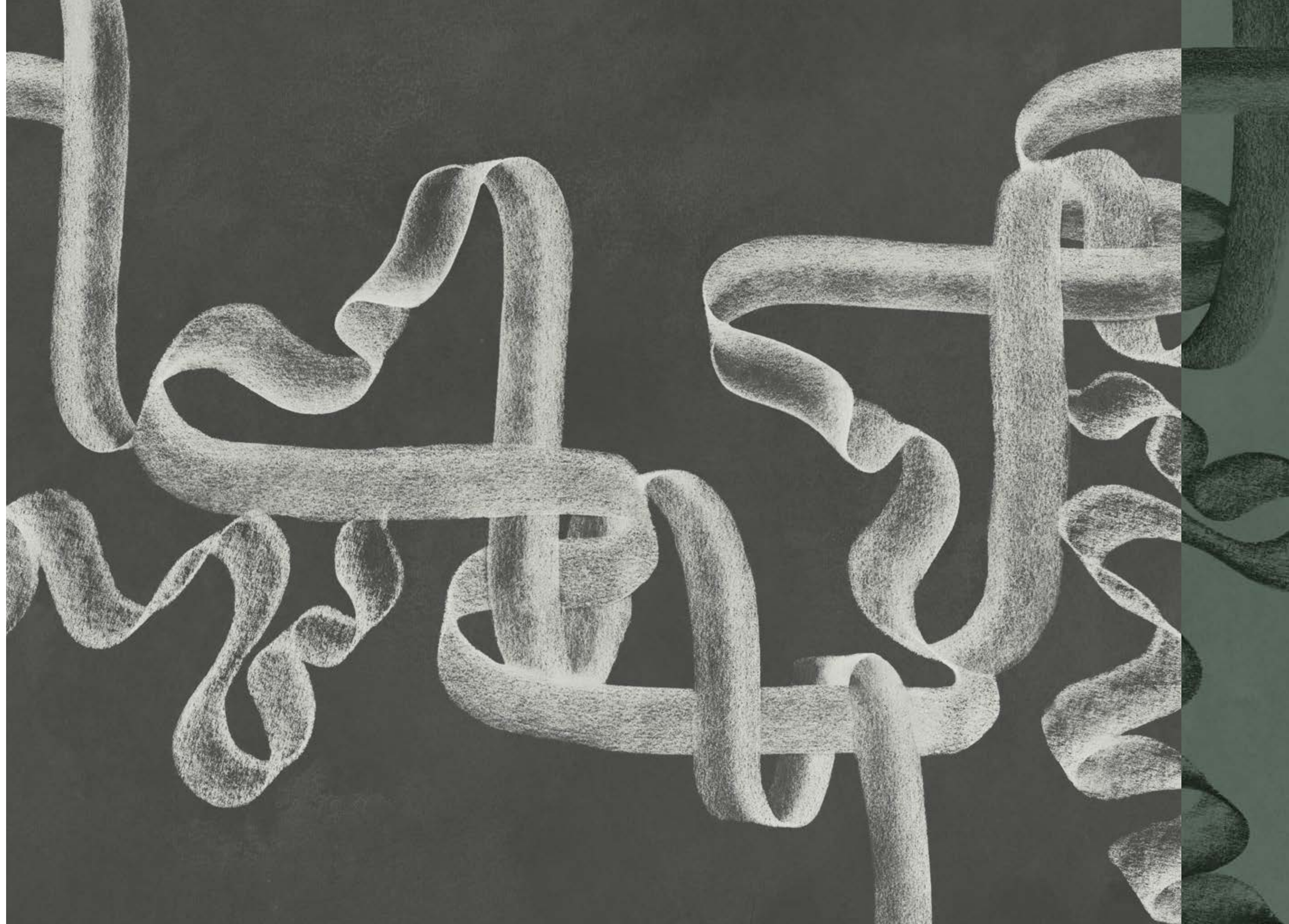
Mármol — Ref.013A

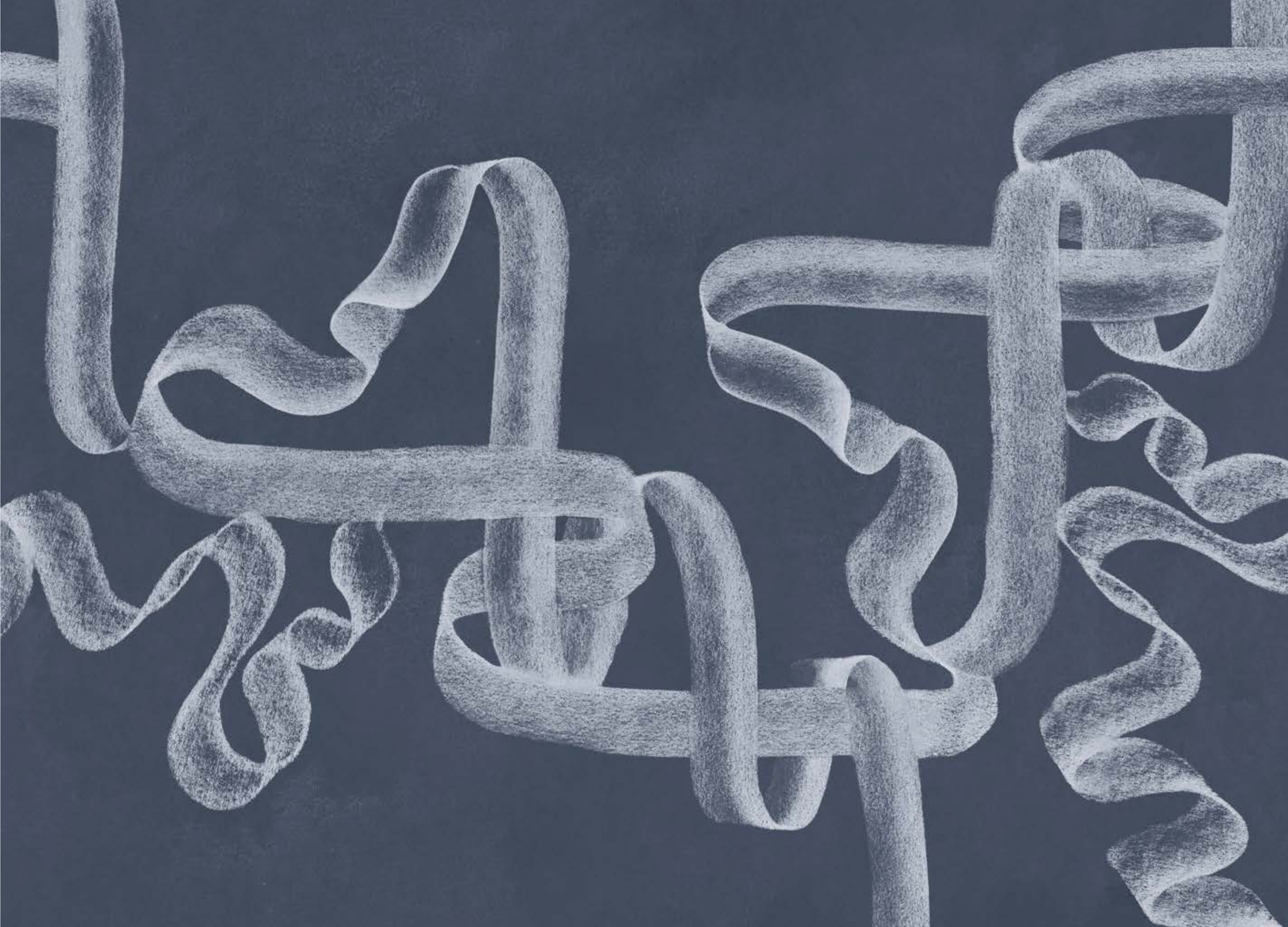
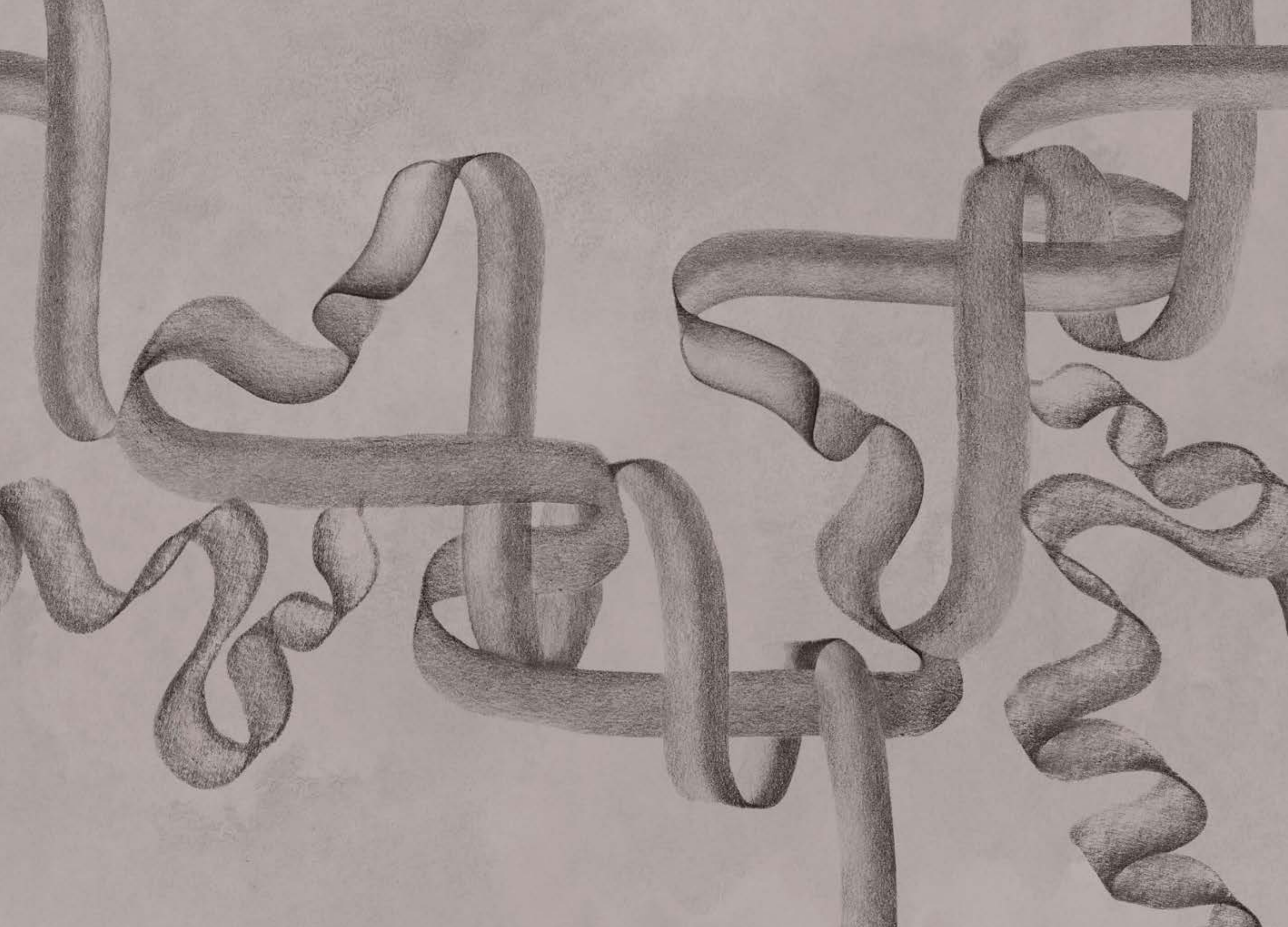
Tarifa — Ref.086B

Plomo — Ref.020B

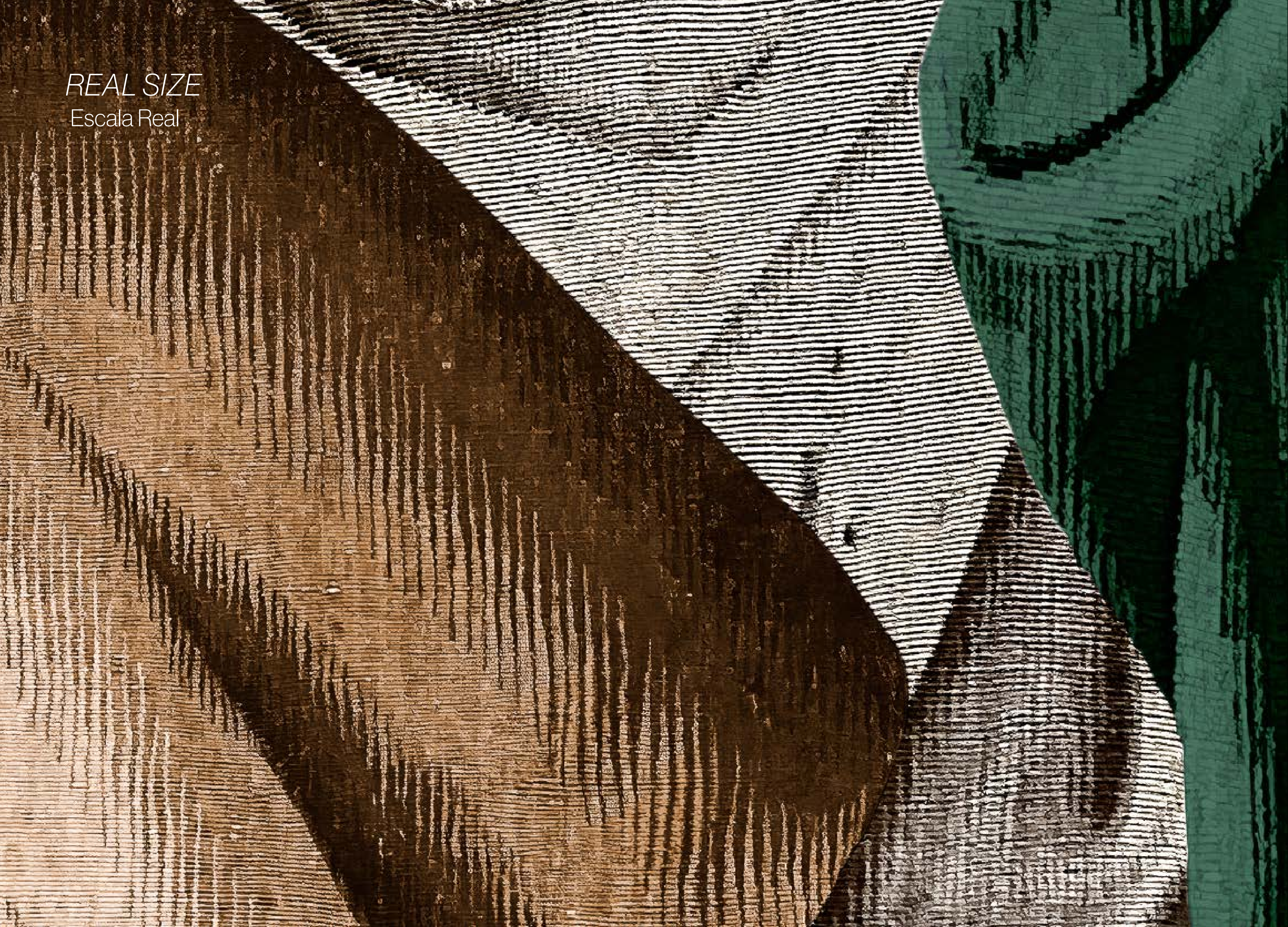
Galaxia — Ref.080C

Frac — Ref.006C





REAL SIZE  
Escala Real



artisan\_by\_Bodo Sperlein

# drapery.

WOVEN TEXTURES  
REMINISCENT OF  
TAPESTRIES

Texturas de lana  
que recuerdan  
antiguos tapices.

*A visual collage inspired  
by the historical tapestry  
tradition from Brussels.*

Un collage visual inspirado  
en la tradición histórica del  
tapiz de Bruselas.



Ref. B00251

# drapery.

Design available in Silver(S) quality  
Diseño disponible en la calidad Silver(S)



Ref. B00252S—p. 79



Ref. B00253S—p. 80

Standard size Mural/Medida Recomendada

Ref. B00251S

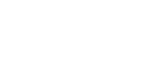



400 cm / 157,5"

Straight Match

280 cm / 110,2"


TOTAL  
LOOK




 Parra — Ref.099C

 Laurel — Ref.100C

 Galaxia — Ref.080C

 Anil — Ref.079B

 Tinta — Ref.010C









[www.coordonne.com](http://www.coordonne.com)

