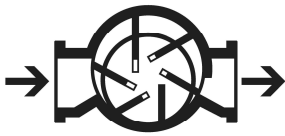
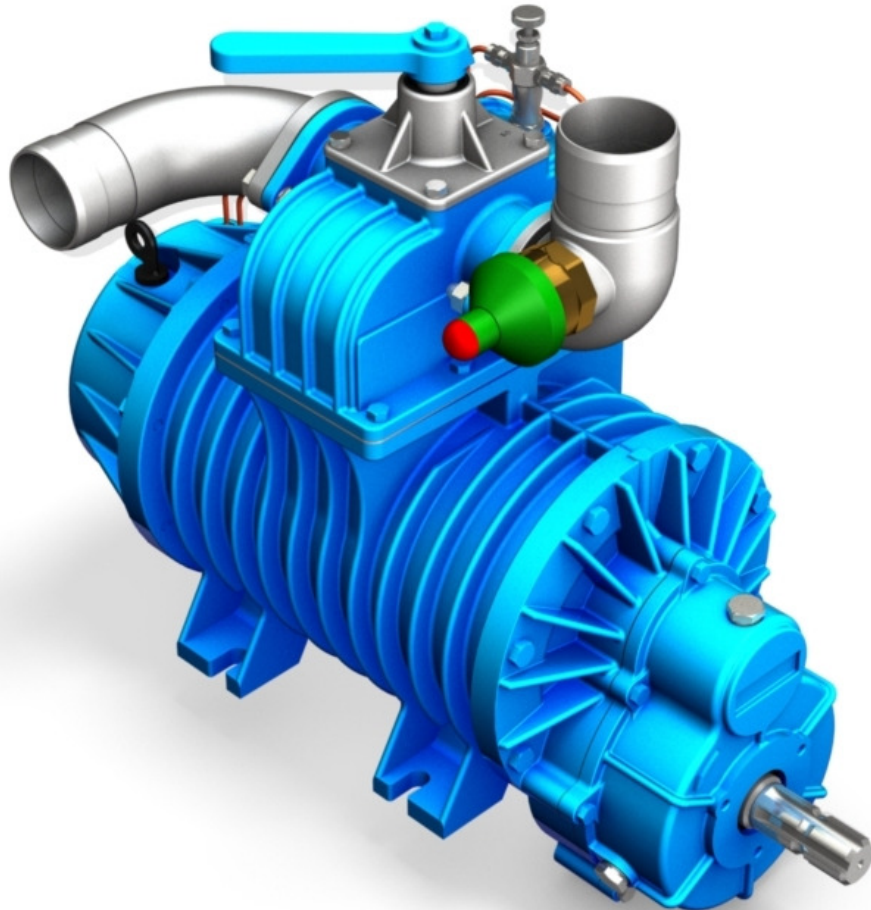


EN

PN



ORIGINAL INSTRUCTIONS



INSTALLATION, USE AND
MAINTENANCE MANUAL



Rev. 09
11-06-2013

COMPANY WITH QUALITY MANAGEMENT
SYSTEM CERTIFIED BY DNV
= ISO 9001:2008 =

Index

1. General advises

- 1.1 Introduction pag. 2
- 1.2 Request of spare parts pag. 2

2. Technical specifications

- 2.1 Technical data/Overall dimensions mod. PN...D pag. 3
- 2.2 Technical data/Overall dimensions mod. PN...M pag. 4
- 2.3 Technical data/Overall dimensions mod. PN...FL pag. 5

3. Safe-operating prescriptions

- 3.1 General suggestions pag. 6
- 3.2 Normal running of the pump pag. 6

4. Installation

- 4.1 Checking at arrival of goods pag. 7
- 4.2 Pump mounting / Drive connection pag. 7
- 4.3 Layout of vacuum line pag. 8

5. Starting-up instructions

- 5.1 Oil level checking pag. 9
- 5.2 Lubrication checking pag. 9
- 5.3 Vacuum / Pressure changeover valve pag. 9

6. Maintenance

- 6.1 Ordinary maintenance pag.10
- 6.2 Extraordinary maintenance pag.10
- 6.3 Trouble-shooting pag.11

1. General advises

1.1 Introduction

This booklet contains the necessary instructions for a correct installation, running test, normal use and maintenance of the pump as well as practical suggestions for safe operating.

The knowledge of the following will give trouble free operation for a long time.

It is recommended to:

- read and apply closely the instructions before running the pump.
- keep the booklet at hand and have it known to all operators.

1.2 Request of spare parts

To avoid mistakes when ordering the spare parts make sure you indicate:

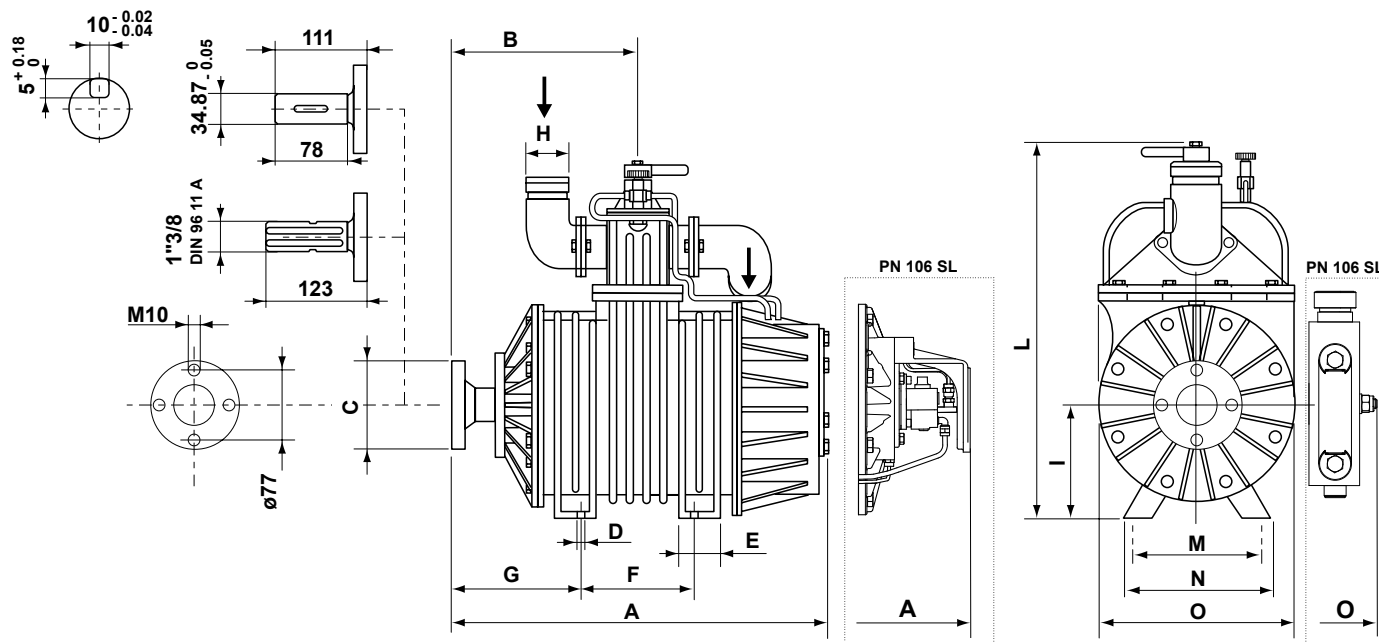
- | | | |
|----------------------------------|---|----------------------|
| a) the model of the pump | } | See pump label |
| b) the serial number of the pump | | |
| c) the denomination of the part | } | See spare parts list |
| d) the number of the pieces | | |
| e) the code of the part | | |

Example:

- a) PN 106 M
- b) X50012
- c) Rotor vane
- d) N° 4 pieces
- e) 16016.010.00

2. Technical specifications

2.1 Technical data / Overall dimensions mod. PN...D



AIR COOLED VACUUM PUMPS-PN SERIES

Performances at 1300 R.P.M.-max. speed

Model		PN 23D	PN 33D	PN 45D	PN 58D	PN 84D	PN106D
Air flow - l./min.	Free air	2600	3600	5300	6500	9000	11000
	60% vacuum	2100	2900	4500	5800	8100	10000
Max vacuum - %		90	90	92	92	92	92
Max operating rel. pressure (abs.) - bar		0,5 (1,5)	0,5 (1,5)	0,5 (1,5)	0,5 (1,5)	0,5 (1,5)	0,5 (1,5)
Power required at 0,5 bar rel. (1,5 abs.) - kW		3,3	4,5	5,8	6,6	11,2	13,6
Weight - Kg.		53	63	90	102	115	143
Oil consumption g/h-drops/min total		65/40	80/45	90/50	90/50	115/65	135/80
Oil tank capacity - l.		1,2	1,2	2,3	2,3	2,3	2,3
Sound level at 60% vac. 7 m. dist. - dB (A) - with silencer		77	74	76	77	81	84

Dimensions in mm.

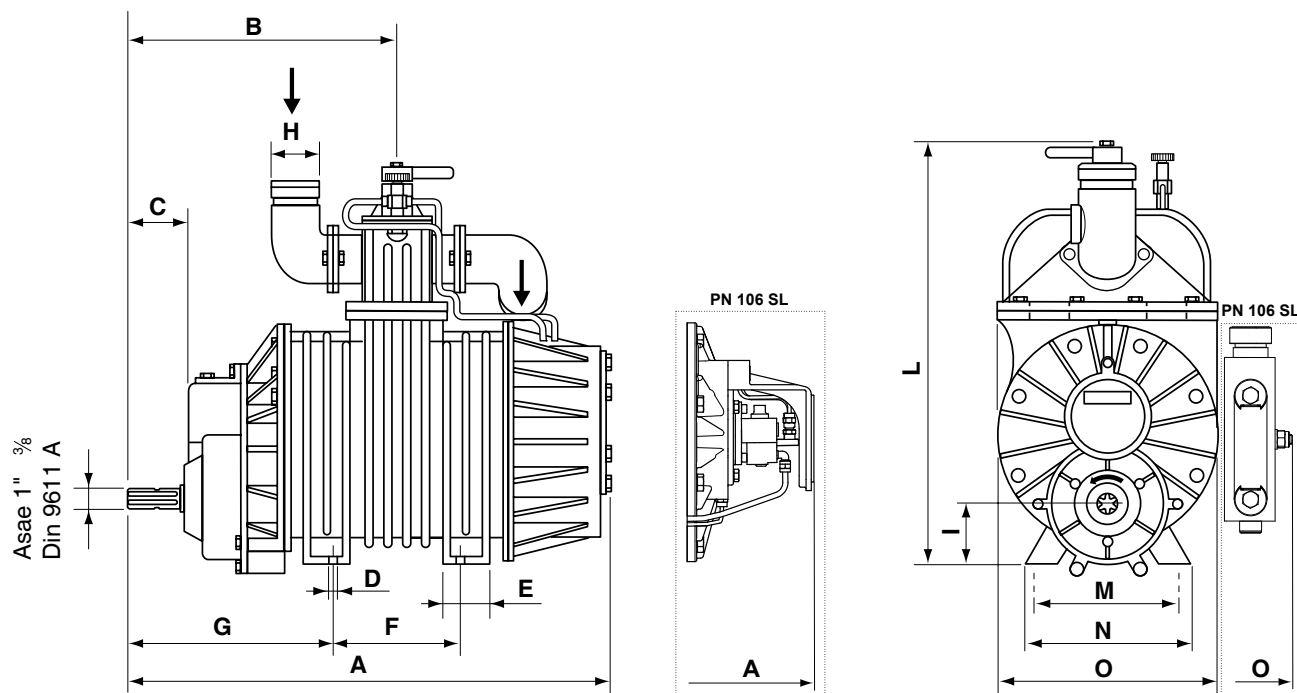
Model	A	B	C	D	E	F	G	H	I	L	M	N	O
PN 23D	466	276	98	16	60	92	226	60	135	408	170	195	215
PN 33D	546	306	98	16	60	160	226	60	135	415	170	195	215
PN 45D	426	206	98	16	50	140	131	60/76/80	150	508	240	270	275
PN 58D	486	226	98	16	80	190	136	60/76/80	175	538	240	270	275
PN 84D	586	276	98	16	80	190	186	60/76/80	150	518	240	270	275
PN 106D	676	321	98	16	70	290	181	60/76/80	175	538	250	285	290
PN 106D SL	700	321	98	16	70	290	181	60/76/80	175	538	250	285	380

LIST OF RECOMMENDED OILS

Pump housing lubrication

Brand/Type	Environment temperature 5°±30° C ISO 46	Environment temperature > 40° C ISO 150
ENI	Radula 46	Radula 150
ESSO	Nuto 46	Nuto 150
SHELL	Morlina Oil 46	Morlina Oil 150
TOTAL	Drosera MS 46	Drosera MS 150
MOBIL	Nuto H 46	Nuto H 150
BP	Bartran HV 46	Bartran HV 150

2.2 Technical data / Overall dimensions mod. PN...M



AIR COOLED VACUUM PUMPS-PN SERIES

Performances at 540 R.P.M.-max. speed

Model		PN 23M	PN 33M	PN 45M	PN 58M	PN 84M	PN106M
Air flow - l./min.	Free air	2600	3600	5300	6500	9000	11000
	60% vacuum	2100	2900	4500	5800	8100	10000
Max vacuum - %		90	90	92	92	92	92
Max operating rel. pressure (abs.) - bar		0,5 (1,5)	0,5 (1,5)	0,5 (1,5)	0,5 (1,5)	0,5 (1,5)	0,5 (1,5)
Power required at 0,5 bar rel. (1,5 abs.) - kW		3,3	4,5	5,8	6,6	11,2	13,6
Weight - Kg.		55	65	90	102	115	143
Oil consumption g/h-drops/min total		65/40	80/45	90/50	90/50	115/65	135/80
Oil tank capacity - l.		1,2	1,2	2,3	2,3	2,3	2,3
Sound level at 60% vac. 7 m. dist. - dB (A) - with silencer		77	74	76	77	81	84

Dimensions in mm.

Model	A	B	C	D	E	F	G	H	I	L	M	N	O
PN 23M	475	280	87	16	60	92	235	60	58	408	170	195	215
PN 33M	555	320	87	16	60	160	235	60	58	415	170	195	215
PN 45M	535	310	87	16	50	140	240	60/76/80	50	508	240	270	275
PN 58M	595	340	87	16	80	190	245	60/76/80	72	538	240	270	275
PN 84M	695	390	87	16	80	190	295	60/76/80	50	518	240	270	275
PN 106M	785	435	87	16	70	290	290	60/76/80	72	538	250	285	290
PN 106M SL	808	435	87	16	70	290	290	60/76/80	72	538	250	285	380

LIST OF RECOMMENDED OILS

Pump housing lubrication

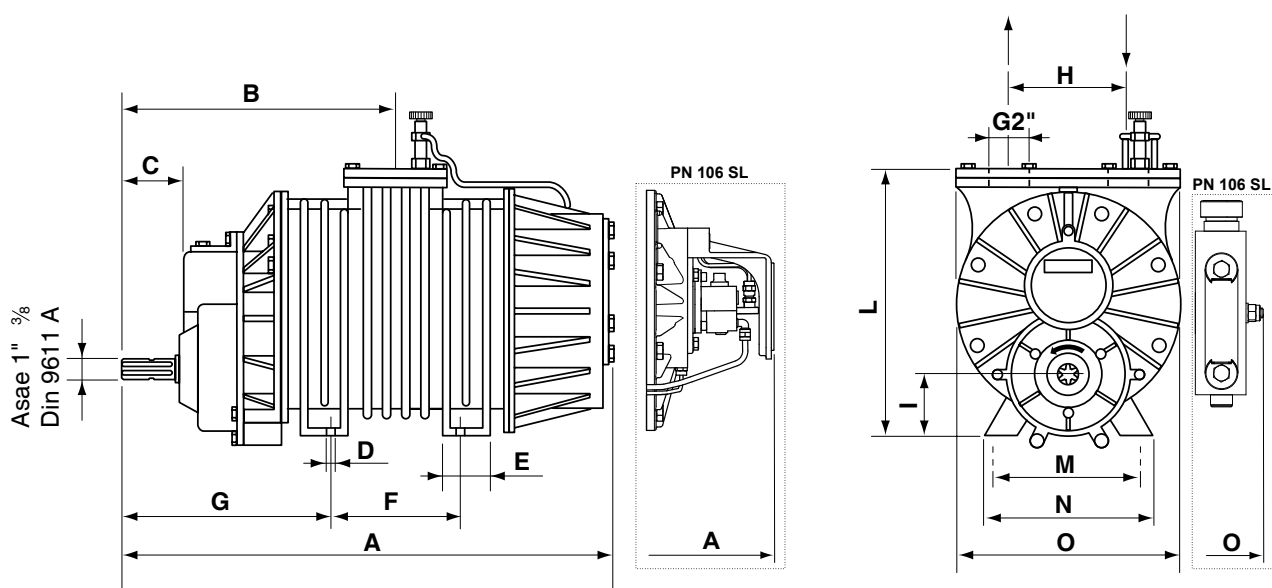
Brand/Type	Environment temperature 5°±30° C ISO 46	Environment temperature > 40° C ISO 150
ENI	Radula 46	Radula 150
ESSO	Nuto 46	Nuto 150
SHELL	Morlina Oil 46	Morlina Oil 150
TOTAL	Drosera MS 46	Drosera MS 150
MOBIL	Nuto H 46	Nuto H 150
BP	Bartran HV 46	Bartran HV 150

LIST OF RECOMMENDED OILS

Lubrication of gear box

Brand/Type	ISO 220
ENI	Blasia 220
ESSO	Spartan EP 220
SHELL	Omala oil 220
TOTAL	Carter EP 220
MOBIL	Mobilgear 630
BP	Energol GR XP 220

2.3 Technical data / Overall dimensions mod. PN...FL



AIR COOLED VACUUM PUMPS-PN SERIES

Performances at 540 R.P.M.-max. speed

Mod.		PN 45FL	PN 58FL	PN 84FL	PN 106FL
Air flow - l./min.	Free air	5300	6500	9000	11000
	60% vacuum	4500	5800	8100	10000
Max vacuum - %		92	92	92	92
Max operating rel. pressure (abs.) for intermittent duty (max 5 min) - bar		3 (4)	3 (4)	3 (4)	3 (4)
Max operating rel. pressure for continuous duty (abs) - bar		1,5 (2,5)	1,5 (2,5)	1,5 (2,5)	1,5 (2,5)
Power at 0,5 bar rel. (1,5 abs.) - kW		5,8	6,6	11,2	13,6
Weight - Kg.		84	95	108	136
Oil consumption g/h-drops/min total		90/50	90/50	115/65	135/80
Oil tank capacity - l.		2,3	2,3	2,3	2,3
Sound level at 60% vac. 7 m. dist. - dB (A) - with silencer		76	77	81	84

Dimensions in mm.

Mod.	A	B	C	D	E	F	G	H	I	L	M	N	O
PN 45FL	535	310	87	16	50	140	240	145	50	315	240	270	275
PN 58FL	595	340	87	16	80	190	245	145	72	345	240	270	275
PN 84FL	695	390	87	16	80	190	295	145	50	325	240	270	275
PN 106FL	785	435	87	16	70	290	290	145	72	345	250	285	290
PN 106FL SL	808	435	87	16	70	290	290	145	72	345	250	285	380

LIST OF RECOMMENDED OILS

Pump housing lubrication

Brand/Type	Environment temperature 5°±30° C ISO 46	Environment temperature > 40° C ISO 150
ENI	Radula 46	Radula 150
ESSO	Nuto 46	Nuto 150
SHELL	Morlina Oil 46	Morlina Oil 150
TOTAL	Drosera MS 46	Drosera MS 150
MOBIL	Nuto H 46	Nuto H 150
BP	Bartran HV 46	Bartran HV 150

LIST OF RECOMMENDED OILS

Lubrication of gear box

Brand/Type	ISO 220
ENI	Blasia 220
ESSO	Spartan EP 220
SHELL	Omala oil 220
TOTAL	Carter EP 220
MOBIL	Mobilgear 630
BP	Energol GR XP 220

3. Safe operating and accident prevention

3.1 General suggestions

- Ordinary and extraordinary maintenance has to be done while the unit is stopped and the drive disconnected.
- Interventions on pneumatic plants have to be done after disconnecting pressure/vacuum from the same.
- Never start the pump if adequate/foreseen safety devices are not installed.
Damaged protections must be immediately replaced.
- Be aware that during operation the pump's body can reach temperature of over 60° centigrade.
Possibility of burnings if this warning is missacted.



Maximum speed shown in the technical specifications tables must not be exceeded.

3.2 Normal use

- Vacuum pumps of the PN-series used for the suction of liquids are foreseen for a max pressure of + 1,5 bar (2,5 for "FL" model) and a max vacuum rate of 92 %.
As cooling is given by atmospheric air, pumps are foreseen for non-continuous duty; suggested uninterrupted working-time: about 15 minutes (free air).
Overheating of the pump will cause serious damages of the same and/or blocking of the rotor.

4. Installation

4.1 Checking at arrival

- upon receipt check that the pump and related accessories are not damaged.
- Check that the rotor/shaft is not blocked.

4.2 Pump mounting / Drive connection

- The pump must be installed so that it is easily accessible for inspection and maintenance.
- When using the belts and pulley, the pulley can be mounted directly on the rotor shaft.
- The vacuum pump must be installed on a rigid base or stand. The drive can be by cardan shaft, belts and pulley or by hydraulic motor.
- The alignment between the pulley of the pump and the driving pulley must be thoroughly checked. The V-belts tension must be normal, that means the belts must flex for about 2 cm. under the thumb pressure.
- The cardan shaft must be mounted so that it does not create any axial thrust; the inclination of the shaft must not exceed 15° (see fig. 1).
- With the hydraulic transmission the motor must be connected by means of a support and a flexible joint.



The transmission must be protected according to current safety standards (for Europe 2006/42 CEE standards).

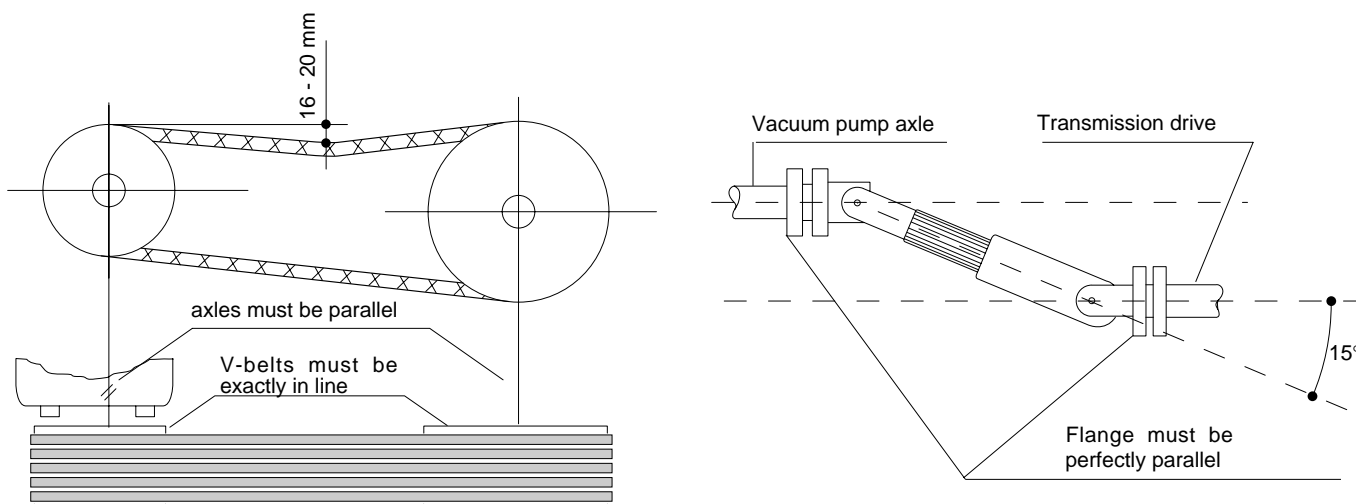


Check that the actual shaft rotation direction matches that of the arrow on the label fixed on the front of the pump.



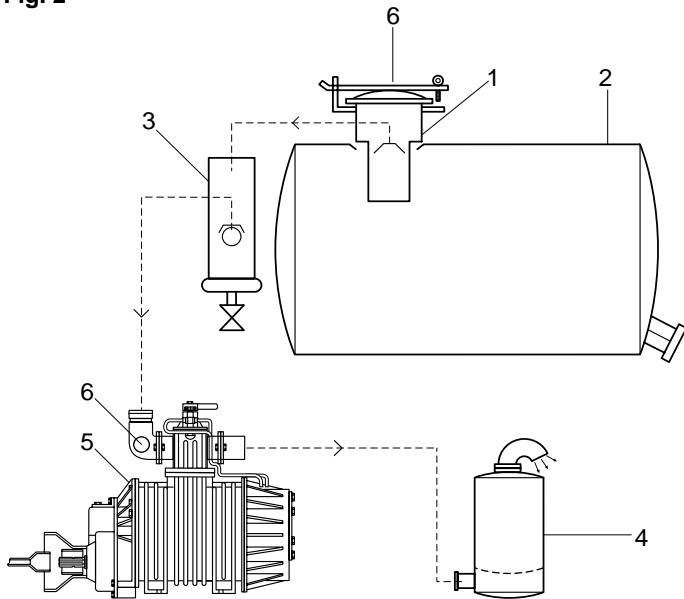
Drive by belts and pulleys: the pulley has to be mounted on the «tapered shaft». Proceed as indications of fig. 6-7.

Fig. 1



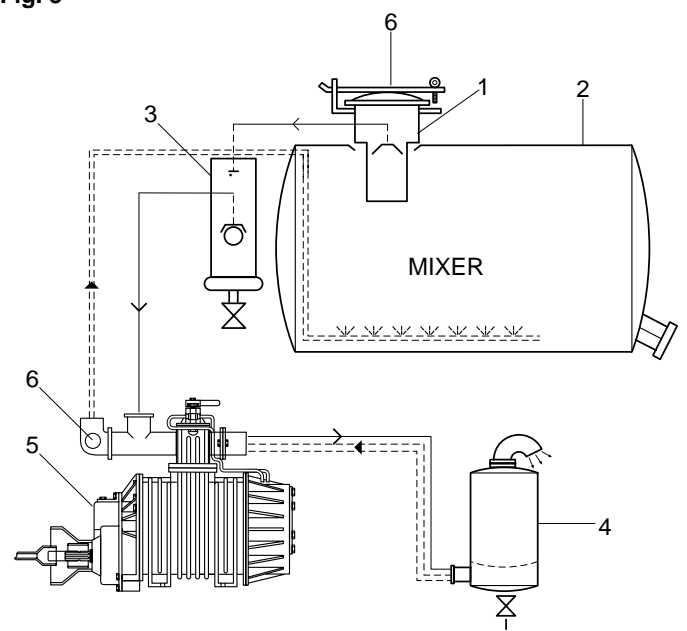
4.3 Layout of vacuum line

Fig. 2



PN PUMP WITH STANDARD MANIFOLD

Fig. 3



PN PUMP WITH MIXER MANIFOLD

Legend

- | | |
|---|---------------------|
| 1 | Primary shutoff |
| 2 | Tank |
| 3 | Secondary shutoff |
| 4 | Silencer + oil trap |
| 5 | Vacuum pump "PN" |
| 6 | Safety relief valve |

- The mounting of a secondary shutoff (pos. 3) is suggested, in-between the pump and the tank, for protecting the vacuum pump.
- A silencer (pos. 4) is suggested in order to reduce sound level.



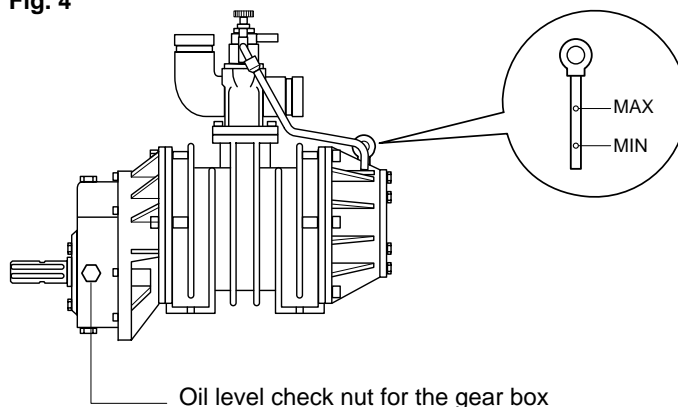
The application of a safety relief valve and a vacuum relief valve on the tank or along the suction line must be foreseen.

5. Starting-up instructions

5.1 Oil level checking

- Before starting-up the pump, check by the oil dip-stick the level of the oil (fig. 4). If refill is needed only the recommended oils must be used (see par. 2). Also the oil level in the gear box must be checked and it must reach the oil level check-nut.

Fig. 4



5.2 Lubrication checking

- When the pump is running, check the correct flow of the oil through the sight glasses of the drip oilers (oil drops must flow regularly). In case of oil adjustment, the flow will increase by turning the

adjusting pin on the drip oiler counterclockwise and will decrease by turning it clockwise). For oil consumption see paragraph 2.

5.3 Vacuum / Pressure changeover valve

- Rotating the handle of the 4 way valve (pos. 1÷2 - See following figure) the pump changes over from vacuum to pressure (or viceversa).



As the pump can be connected to the vacuum tank with both the front (drive side) connection or the rear (oil tank side) connection in order to avoid mistakes see the following table "Vacuum-Pressure"

Manifold	Drive	Handle pos.	Pump function	Connection to the tank
Standard	Direct drive Left	1	Pressure	
	Gear box Right	2	Vacuum	
	Direct drive Right	1	Vacuum	
	Gear box Left	2	Pressure	
Mixer	Direct drive Left	1	Vacuum	
	Gear box Right	2	Pressure	
	Direct drive Right	1	Pressure	
	Gear box Left	2	Vacuum	

- JUROP pumps are normally assembled to be connected to the tank by the front connection (see fig. 2-3 page 8).

- **Left** hand drive means counterclockwise rotation and **Right** hand drive means clockwise rotation, looking at the pump from the shaft side.



In case the pump is connected to the tank with the rear connection (oil tank side) the functions "Vacuum - Pressure" will be reversed.



Be aware not to place the handle in neutral position (half way between the two end positions) otherwise the pump will be by-passed (actually runs idle)

6. Maintenance

6.1 Ordinary maintenance

- a) Re-fill periodically the lubrication oil tank.
- b) Change at least once a year the oil in the reduction-box and/or gear-box (see chart at point 2).
- c) Clean the sight-glasses of the drip-oilers.
- d) Check that the drive protections are properly fixed.
- e) On direct-drive models grease the front ball-bearing (see pos. 1 fig. 6-7-8).

6.2 Extraordinary maintenance

Changing of the sliding-vanes:

- a. Remove the front flange as shown in fig. 6-7 and 8.
- b. Lubricate the new vanes and insert them after removal of the old ones.

- c. Replace all the gaskets and seals (ask for the suitable "Gasket Kit").

DISASSEMBLY OF PUMPS

Fig. 6-PN 45÷106

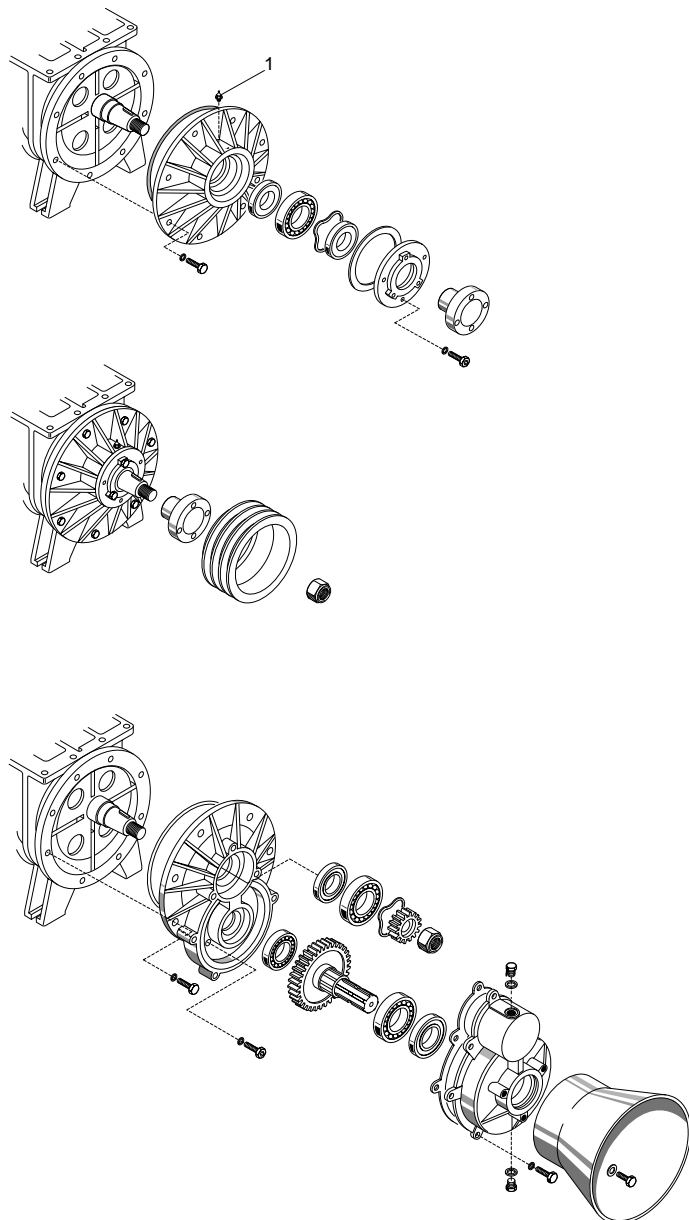
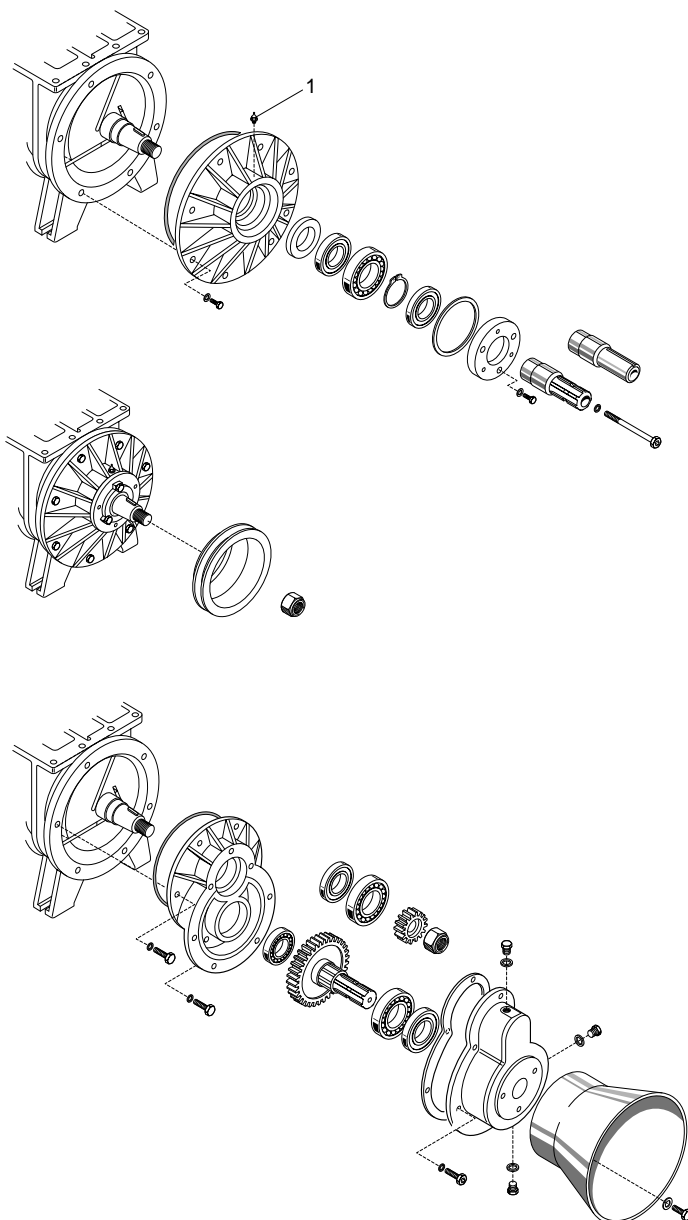


Fig. 7-PN 23÷33



6.3 Trouble-shooting

Troubles

A - Overheating of the pump

CAUSE	CORRECTION
- Faulty lubrication	- Check the lubrication
- Oil missing	- Re-fill the tank
- Revs. to high	- Reduce revs.
- Operation-time to long	- Stop the pump for a while and let it cool down or operate at lower vacuum rate

B - Pump consumes too much oil

CAUSE	CORRECTION
- Drip-oiler/s badly adjusted	- Adjustment as described
- Oiler's pin not sealing	- Clean the related seat

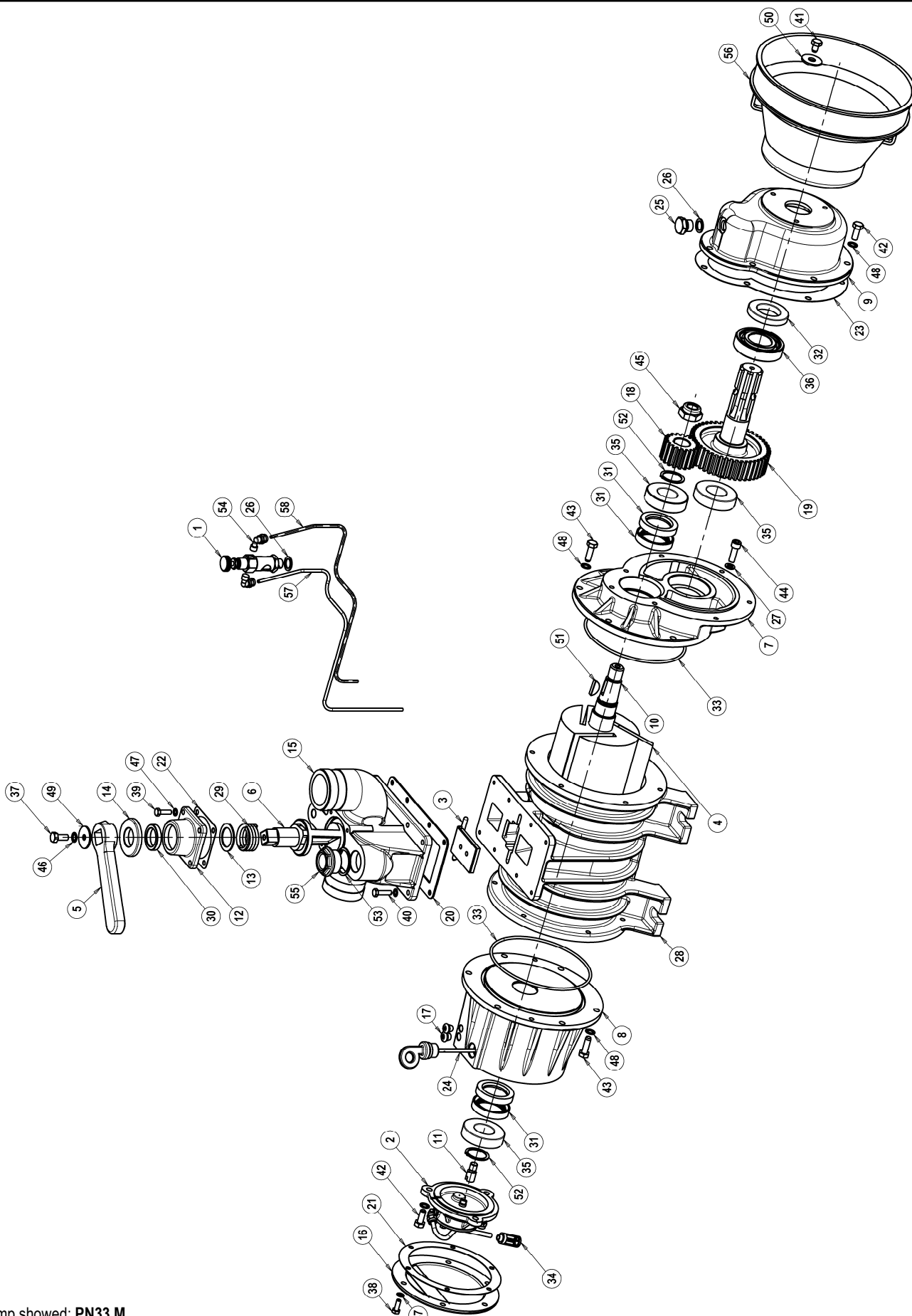
C - The pump is blocked

CAUSE	CORRECTION
- Broken vanes due to suction of foreign objects or bad lubrication	- Dismount the pump and replace damaged parts. Check primary shut-off and lubrication system.
- Frozen pump	- Unfreeze the vacuum pump
- Damaged drive system	- Check and replace damaged parts
- Flange bolts to tight	- Loosen the bolts

D - Little or no vacuum or pressure in the tank

CAUSE	CORRECTION
- Change-over lever in neutral position	- Place lever in right position as shown at point 5-3.
- Worn sliding-vanes	- Replace the vanes
- Loose check-valve	- Replace the valve
- Worn sealing rings	- Replace the rings
- Blocked vacuum pump	- See previous instructions
- Leaking of the gate-valves on the tank	- Tighten the valves
- Leaking of the seals	- Repair or replace the seals
- Primary shut-off blocked	- Dismount and clean the parts
- Clogged connecting pipeline	- Clean the steel pipelines or replace the rubber ones

PN 23-33 M

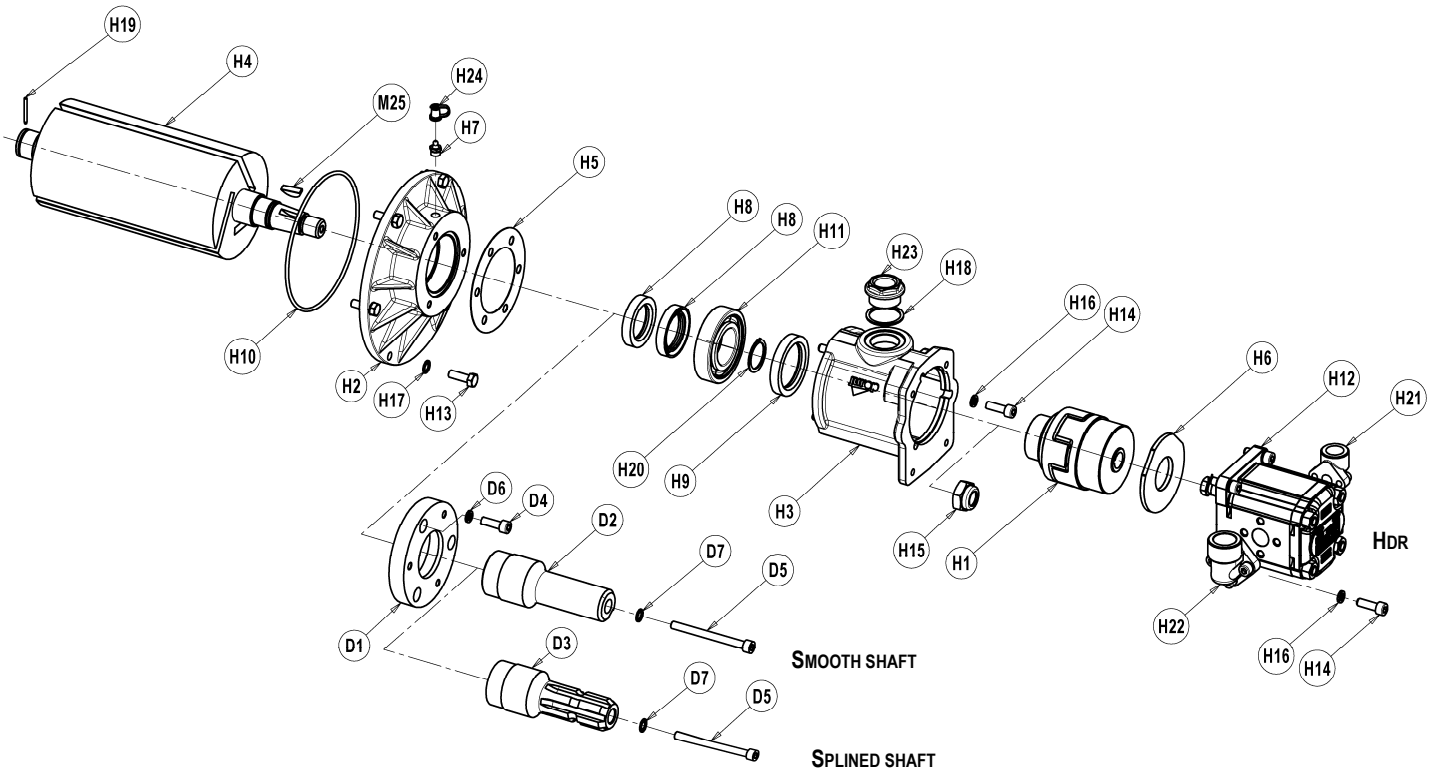


Pump showed: **PN33 M**

PN23-33 M

Pos.	Code	Description	Q.ty	Pos.	Code	Description	Q.ty
1	1401200400	OILER	1	29	1691000200	SPRING	1
2	1407202300	OIL PUMP DX PN23-33	1	30	4022200005	SEAL RING 37X27X7	1
	1407202400	OIL PUMP SX PN23-33	1	31	4022200025	SEAL RING 55X35X10	4
3	1593600100	BUTTERFLY VALVE	1	32	4022200032	SEAL RING 60X35X10	1
4	1601600000	VANE PN23 BK	3	33	4022200230	SEAL RING OR 4575	2
	1601600100	VANE PN23	3	34	4022300001	FILTER NYLON	1
	1601600200	VANE PN33 BK	3	35	4023100110	BEARING 6206	3
	1601600300	VANE PN33	3	36	4023100020	BEARING 6207	1
5	1605500000	HANDLE	1	37	4026100408	SCREW M8X20	1
6	1608501300	SWITCH PN23-33	1	38	4026102704	SCREW M6X16 ZINC.	6
7	1610503900	FLANGE PN23-33	1	39	4026102706	SCREW M6X20 ZINC.	4
8	1612501200	OIL BOX	1	40	4026102707	SCREW M6X25 ZINC.	8
9	1612501300	BOX PN23-33	1	41	4026102802	SCREW M8X12 ZINC.	3
10	1621501600	ROTOR PN23 DX	1	42	4026102806	SCREW M8X20 ZINC.	10
	1621501700	ROTOR PN33 DX	1	43	4026102807	SCREW M8X25 ZINC.	10
11	1622002600	PIN	1	44	4026121407	SCREW M8X25 ZINC.	2
12	1623500500	CAP NUT PN23-33	1	45	4026305612	SELFBLOCKING M20X1,5	1
13	162409YKB0	DISTANCERING	1	46	4026350909	TOOTH WASHER M8	1
14	1624202300	DISTANCERING	1	47	4026351504	TOOTH WASHER M6	18
15	1627501600	MANIFOLD PN23-33	1	48	4026351505	TOOTH WASHER M8	20
16	1640100000	COVER	1	49	4026356004	FLAT WASHER 8X32	1
17	1642600000	GASKET	2	50	4026356010	FLAT WASHER 10X30	3
18	1651000200	PINION PN23-33	1	51	4026500018	TAB. 6X10	1
19	1651000300	WHELL PN23-33	1	52	4026510025	SEAL RING SEEGER	2
20	1680600400	GASKET	1	53	4026702706	WASHER 1"	1
21	1680712100	GASKET	1	54	4026706000	FITTING 4X1/8	2
22	1680700800	GASKET	1	55	4026904003	PLUG 1"	1
23	1680700900	GASKET	1	56	4029602806	CARDAN SHAFT PROTECTION	1
24	1683600100	PLUG FOR OIL LEVEL	1	57	1663014500	MULTIPLIER HOSE PN23	1
25	1684000000	RELIEF PLUG 3/8	2		1663014600	MULTIPLIER HOSE PN33	1
26	1685100000	FLAT WASHER	4	58	1663014300	MULTIPLIER HOSE PN23	1
27	1685100800	FLAT WASHER	2		1663014400	MULTIPLIER HOSE PN33	1
28	1687502600	PUMP HOUSING PN23	1				
	1687502700	PUMP HOUSING PN33	1				

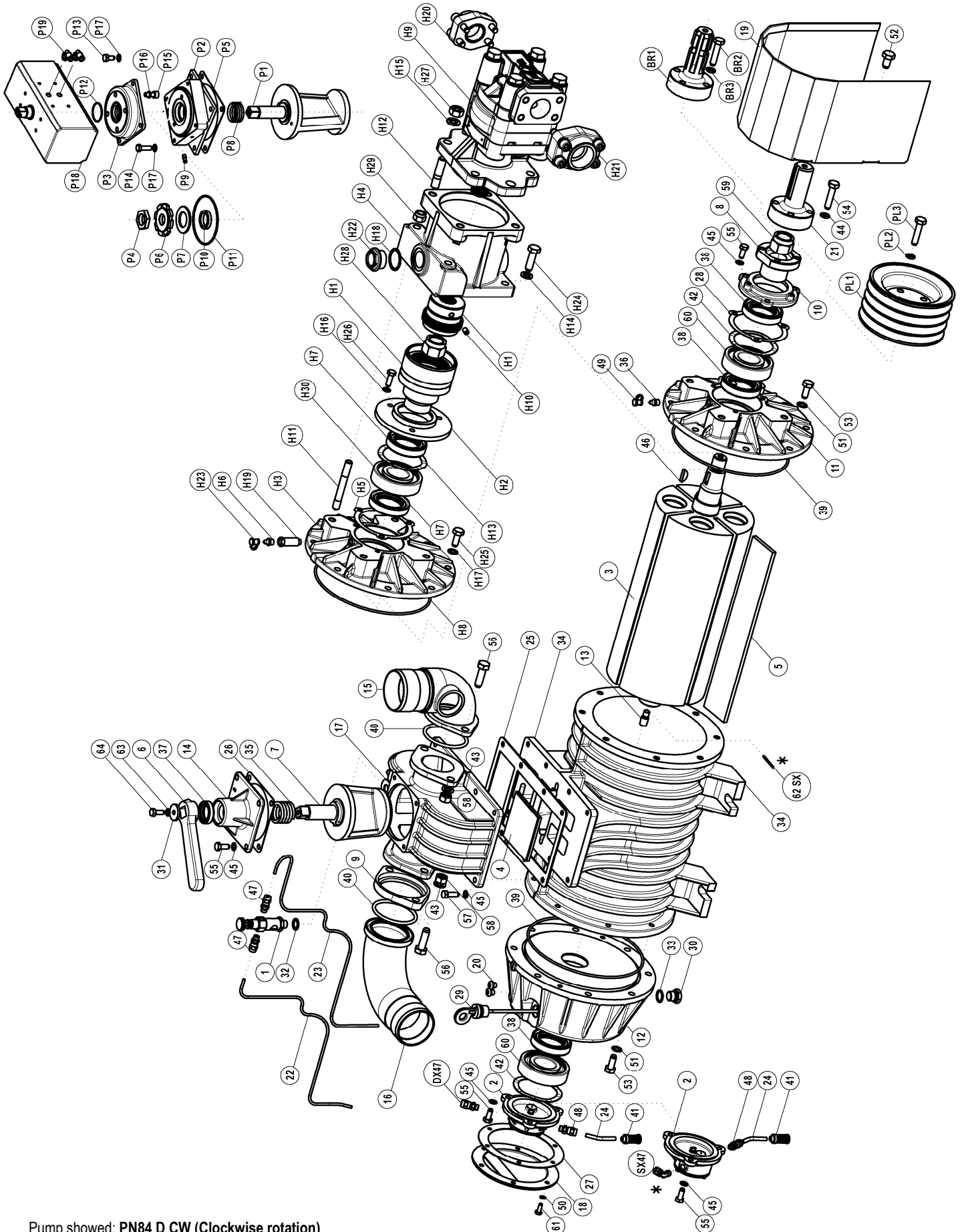
PN 23-33 D - HDR



PN23-33 D - HDR

Pos.	Code	Description	Q.ty	Pos.	Code	Description	Q.ty
PN23-33 HYDRAULIC DRIVE							
H1	1470101600	JOINT HDR	1	H15	4026305612	SELFBLOCKING M20X1,5	1
H2	1610504000	FLANGE PN23-33	1	H16	4026350505	GROWER WASHER M8	7
H3	1612504900	BOX HDR PN23-33	1	H17	4026351505	TOOTH WASHER M8	6
H4	1621502600	ROTOR PN23 SX	1	H18	4026359001	WASHER	1
	1621501600	ROTOR PN23 DX	1	H19	4026414614	PLUG 3X30	1
	1621502700	ROTOR PN33 SX	1	H20	4026510025	SEAL RING SEEGER	1
	1621501700	ROTOR PN33 DX	1	H21	4026710013	FITTING 1/2"	1
H5	1680701000	GASKET	1	H22	4026710015	FITTING 3/4"	1
H6	1684002100	SEAL RING PN23-33	1	H23	4026904003	RELIEF PLUG 1"	1
H7	4022100010	GREASE	1	H24	4029602700	CAP NUT	1
H8	4022200025	SEAL RING 55X35X10	2	H25	4026500018	TAB. 6X10	1
H9	4022200037	SEAL RING 65X48X10	1	SMOOTH SHAFT - SPLINED SHAFT			
H10	4022200230	SEAL RING OR 4575	1	D1	1610500900	FLANGE	1
H11	4023100110	BEARING 6206	1	D2	1650000500	SMOOTH SHAFT	1
H12	4024107206	MOTOR HDR SX	1	D3	1650000400	SPLINED SHAFT	1
	4024107206	MOTOR HDR DX	1	D4	4026121407	SCREW M8X25	3
H13	4026102807	SCREW M6X25 ZINC.	6	D5	4026121413	SCREW M8X90	1
H14	4026121407	SCREW M8X25 ZINC.	7	D6	4026350505	GROWER WASHER M8	3
				D7	4026351505	WASHER M8	1

PN 45-58-84 D

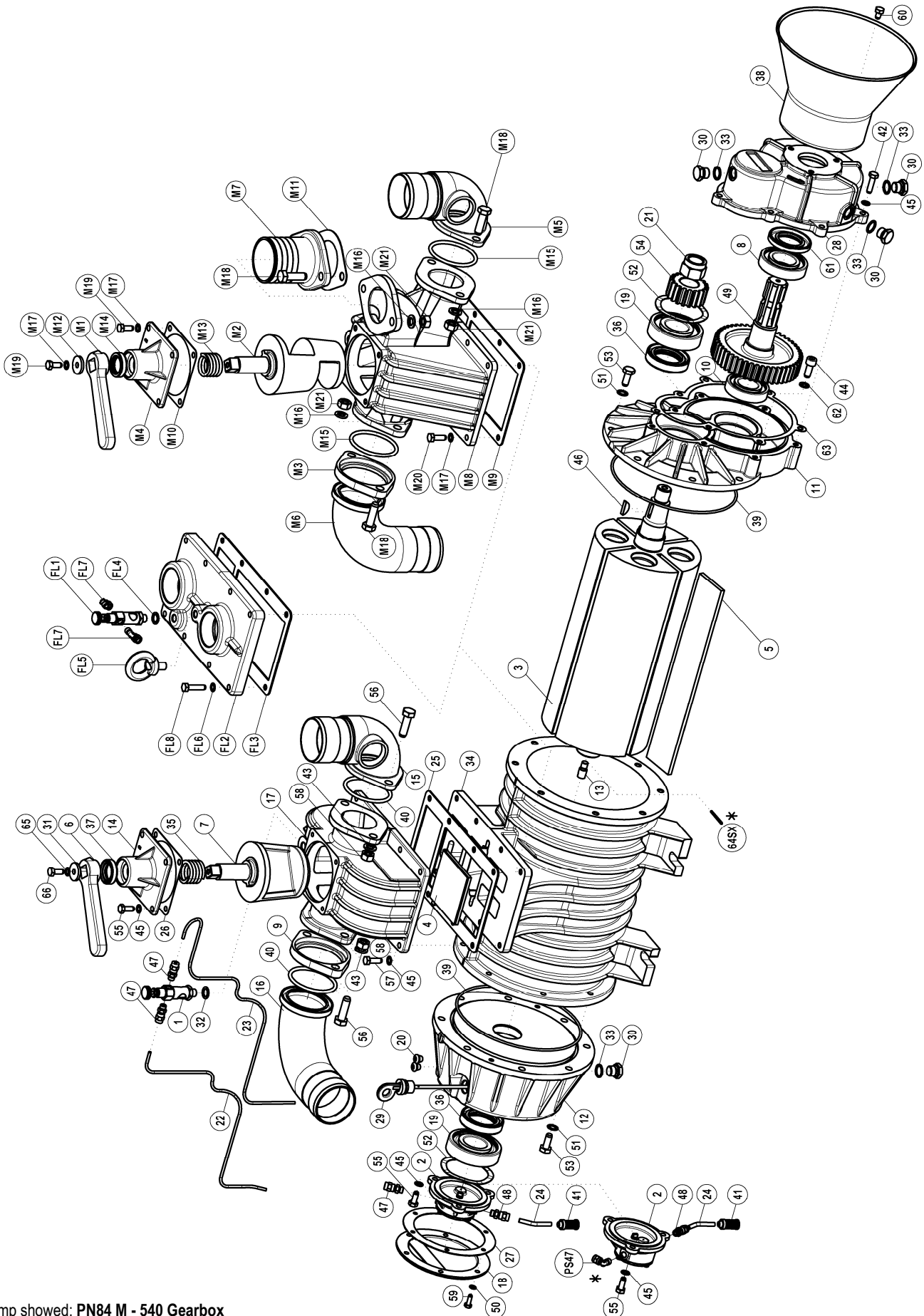


Pump showed: PN84 D CW (Clockwise rotation)

PN45-58-84 D

Pos.	Code	Description	Q.ty	Pos.	Code	Description	Q.ty
PN45-58-84 DIRECT DRIVE - SMOOTH SHAFT							
1	1401200400	DRIP OILER – 2 CONNECTIONS	1	51	4026351506	WASHER M10	16
2	1407200500	GEAR OIL PUMP DX	1	52	4026103000	SCREW M12X20	4
2A	1407202100	GEAR OIL PUMP SX	1	53	4026102907	SCREW M10X25	16
3	1521500300	ROTOR PN 58	1	54	4026102911	SCREW M10X45	4
	1521500200	ROTOR PN 45	1	55	4026102806	SCREW M8X20	10
	1521500400	ROTOR PN 84	1	56	4026103004	SCREW M12X40	4
4	1593600000	FLAPPER VALVE	1	57	4026102807	SCREW M8X2	8
5	1601600600	VANE PN 58 BK	3	58	4026308007	NUT M12	4
	1601600400	VANE PN 45 BK	4	59	4026305614	SELF LOCKING NUT M24X2	1
	1601600800	VANE PN 84 BK	4	60	4023100040	BEARING 40X90X23 6308	2
6	1605500000	VALVE HANDLE	1	61	4026102806	SCREW M6X16	7
7	1608500000	CONVEYOR	1	62SX	4026414617	PLUG 3X40 6873	1
8	1610006600	FLANGE FOR DIRECT DRIVE	1	63	4026308005	HEXAGONAL NUT M8	1
9	1610100000	OUTLET PORT FLANGE	1	64	4026135414	STUD SCREW M8X45	1
10	1610500400	END CAP	1	SPLINED SHAFT			
11	1610500500	DIRECT DRIVE END PLATE	1	BR1	1650004700	SPLINED SHAFT 1" 3/8	1
12	1612500300	OIL TANK	1	BR2	4026102911	SCREW M10X45	4
13	1622002600	OIL PUMP DRIVE	1	BR3	4026350708	GROWER WASHER M10	4
14	1623100000	END CAP	1	PULLEY D_150			
15	1627100100	SUCTION MANIFOLD D.60	1	PL1	1653501000	PULLEY SPB 150X4	1
15	1627100200	SUCTION MANIFOLD D.76	1	PL2	4026350708	GROWER WASHER M10	4
16	1627100500	EXHAUST MANIFOLD D.76	1	PL3	4026102806	SCREW M8X20	4
17	1627500000	STANDARD MANIFOLD	1	PN45-58-84 HYDRAULIC DRIVE			
18	1640101100	OIL TANK COVER	1	H1	1470100400	JOINT GA 100	1
19	1642003000	CARDAN SHAFT PROTECTION	1	H2	1610005500	HYD. DRIVE FLANGE	1
20	1642600000	OIL LINE RUBBER PROTECTION	2	H3	1610500500	DIRECT DRIVE END PLATE	1
21	1650004300	SMOOTH FLANGED SHAFT	1	H4	1612501400	HYD. DRIVE GEARBOX	1
22	1663005500	OIL LINE PN 45 – DIRECT DRIVE	1	H5	1680700400	END CAP GASKET	1
	1663005100	OIL LINE PN 45 – GEARBOX	1	H6	4022100010	GRESASER	1
	1663005600	OIL LINE PN 58 – DIRECT DRIVE	1	H7	4022200110	SEAL RING 72X48X15	2
	1663005200	OIL LINE PN 58 – GEARBOX	1	H8	4022200240	O-RING OR 4825	1
	1663005700	OIL LINE PN 84 – DIRECT DRIVE	1	H9	4024107009	HYDRAULIC MOTOR	1
	1663005300	OIL LINE PN 84 – GEARBOX	1	H10	4026136005	SCREW M8X12	1
23	1663011900	OIL LINE TO LUBR. PUMP PN 45 – D.DRIVE	1	H11	4026171211	STUD SCREW M12X80	2
	1663011800	OIL LINE TO LUBR. PUMP PN 45 – G.BOX	1	H12	4026171304	STUD SCREW M14X40	4
	1663012000	OIL LINE TO LUBR. PUMP PN 58 – D.DRIVE	1	H13	4026300020	COMPENSATION RING	1
	1663010400	OIL LINE TO LUBR. PUMP PN 58 – G.BOX	1	H14	4026350709	GROWER WASHER M12	2
	1663012100	OIL LINE TO LUBR. PUMP PN 84 – D.DRIVE	1	H15	4026350710	GROWER WASHER M14	4
	1663010300	OIL LINE TO LUBR. PUMP PN 84 – G.BOX	1	H16	4026351505	WASHER M8	3
24	1663010500	LUBR. PUMP SUCTION PIPE	1	H17	4026351506	WASHER M10	8
25	1680600100	VALVE HOUSING GASKET	1	H18	4026359001	WASHER 40X33,5X1,5	1
26	1680700200	VALVE STEAM COVER GASKET	1	H19	4026705001	EXTENDED CONNECTION H 36 MM	1
27	1680707500	OIL TANK COVER GASKET	1	H20	4026711003	DRIVE FLANGE AFS 104G 1"1/4	1
28	1680700400	END CAP GASKET	1	H21	4026711004	DRIVE FLANGE AFS 106G 1"1/2	1
29	1683600300	2000 MM OIL DIP STICK	1	H22	4026904003	PLUG 1"	1
29A	1673004100	DIPSTICK SLEEVE	1	H23	4029602700	GREASERS PROTECTION CAP	1
30	1684000000	DRAIN PLUG 3/8	1	H24	4026103004	SCREW M12X40	2
31	1685002800	WASHER FE 30X8,5	1	H25	4026102907	SCREW M10X25	8
32	1685100000	WASHER 14X20X1,5	1	H26	4026107110	SCREW M8X25	3
33	1685100200	WASHER 17X22X1,5	1	H27	4026308008	NUT M14	4
34	1687500300	PUMP HOUSING PN58	1	H28	4026305614	SELF LOCKING NUT M24X2	1
	1687500200	PUMP HOUSING PN45	1	H29	4026305508	SELF LOCKING NUT M12	2
	1687500400	PUMP HOUSING PN84	1	H30	4023100040	BEARING 40X90X23 6308	1
35	1691000000	VALVE SPRING	1	PNEUMATIC 4-WAY VALVE			
36	4022100010	GRESASER	1	P1	160855727B0	PNEUMATIC ACTUATOR COCK	1
37	4022200030	SEAL RING 41X27X10 GP NBR	1	P2	161258B4B0	PNEUMATIC ACTUATOR SUPPORT	1
37A	1624202300	COCK REGULATING SPACER	1	P3	1640580QB0	PNEUMATIC ACTUATOR COVER	1
38	4022200110	SEAL RING 72X48X15	3	P4	167007ZAB0	PNEUMATIC ACTUATOR NUT	1
39	4022200240	O-RING OR 4825	2	P5	1680700200	COVER GASKET	1
40	4022200250	O-RING OR 6287	2	P6	168409PQB0	COCK REGULATION FERRULE	1
41	4022300001	NYLON FILTER D.6	1	P7	168529TFB0	COCK REGULATION SPACER	1
42	4026300020	COMPENSATION RING	2	P8	1691000200	COCK SPRING	1
43	4026350609	GROWER WASHER M12	4	P9	4022100100	SPHERICAL GREASER M6X1	1
44	4026350708	GROWER WASHER M10	4	P10	4022200005	SEAL 37X27X7	1
45	4026351505	WASHER M8	18	P11	4022200330	OR 3375	1
46	4026500018	TAB 6X10	1	P12	4022200331	OR 2137	1
SX47	4026706000	UNIV. CONNECTION 90 4X1/8	1	P13	4026102804	SCREWTE M8X16	4
DX47	4026702000	UNIV. CONNECTION DIR. 4X1/8	1	P14	4026102807	SCREWTE M8X25	4
47	4026702000	UNIV. CONNECTION DIR. 4X1/8	3	P15	4026121405	SCREWTE M8X20	4
48	4026702004	UNIV. CONNECTION DIR. 6X1/8	1	P16	4026350505	WASHER GROWERM8	4
49	4029602700	GREASERS PROTECTION CAP	1	P17	4026351505	WASHER M8	8
50	4026351505	WASHER M8	7	P18	4027100405	PNEUMATIC ACTUATOR	1
				P19	4027421206	CONNECTION R15 6XG1/8	2

PN 45-58-84 M

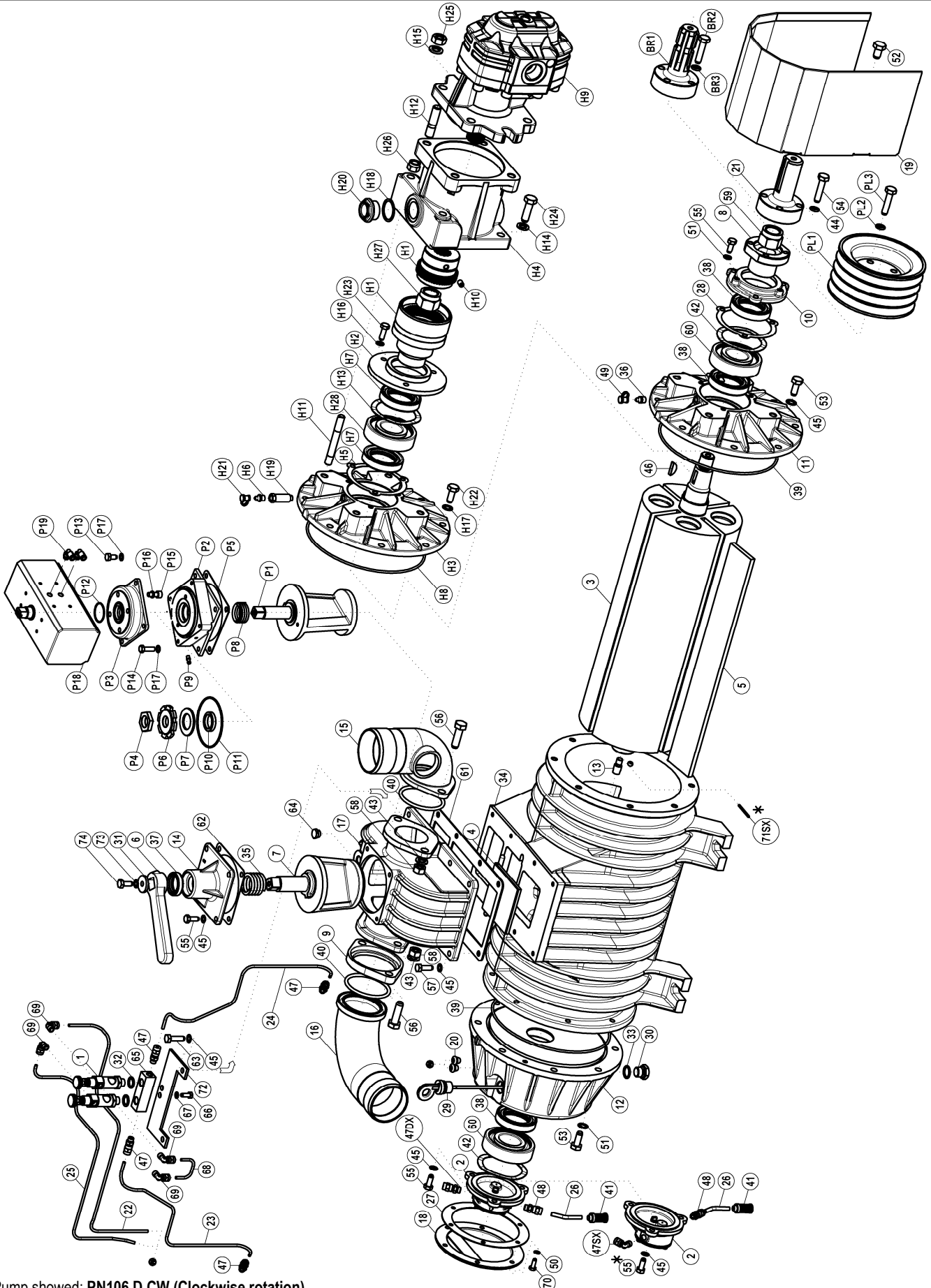


Pump showed: PN84 M - 540 Gearbox

PN45-58-84 M

Pos.	Code	Description	Q.ty	Pos.	Code	Description	Q.ty
540 RPM GEARBOX				42	4026102908	SCREW M8X30	7
1	1401200400	DRIP OILER – 2 CONNECTIONS	1	43	4026350709	GROWER WASHER 12	4
2	1407200500	GEAR OIL PUMP DX	1	44	4026121808	SCREW TCEI M10X25	2
2A	1407202100	GEAR OIL PUMP SX	1	45	4026351505	WASHER M8	22
3	1521500300	ROTOR PN 58	1	46	4026500018	TAB 6X10	1
	1521500200	ROTOR PN 45	1	PS47	4026706000	UNIV. CONNECTION 90 4X1/8	1
	1521500400	ROTOR PN 84	1	47	4026702000	UNIV. CONNECTION DIR. 4X1/8	1
4	1593600000	FLAPPER VALVE	1		4026702000	UNIV. CONNECTION DIR. 4X1/8	3
5	1601600600	VANE PN 58 BK	3	48	4026702004	UNIV. CONNECTION DIR. 6X1/8	1
	1601600400	VANE PN 45 BK	4	49	1651000000	DRIVE GEAR Z48	1
	1601600800	VANE PN 84 BK	4	50	4026351505	WASHER M8	7
6	1605500000	VALVE HANDLE	1	51	4026351506	WASHER M10	14
7	1608500000	CONVEYOR	1	52	4026300020	COMPENSATION RING	2
8	4023100030	BEARING 40X80X18 6208	1	53	4026102907	SCREW M10X25	14
9	1610100000	OUTLET PORT FLANGE	1	54	1651000100	PINION GEAR Z19	1
10	4023100020	BEARING 35X72X17 6207	1	55	4026102806	SCREW M8X20	7
11	1610500000	G.BOX DRIVE END PLATE	1	56	4026103004	SCREW M12X40	4
12	1612500300	OIL TANK	1	57	4026102807	SCREW M8X25	8
13	1622002600	OIL PUMP DRIVE	1	58	4026308007	NUT M12	4
14	1623100000	END CAP	1	59	4026102806	SCREW M8X20	7
15	1627100100	SUCTION MANIFOLD D.60	1	60	4026102802	SCREW M8X12	3
15	1627100200	SUCTION MANIFOLD D.76	1	61	4022200040	SEAL RING 72X40X10	1
16	1627100500	EXHAUST MANIFOLD D.76	1	62	1685100100	WASHER 10X16X1,5	2
17	1627500000	STANDARD MANIFOLD	1	63	1680700000	END COVER GASKET	1
18	1640101100	OIL TANK COVER	1	64SX	4026414617	PLUG 3X40 6873	1
19	4023100040	BEARING 40X90X23 6308	2	65	4026308005	HEXAGONAL NUT M8	1
20	1642600000	OIL LINE RUBBER PROTECTION	2	66	4026135414	STUD SCREW M8X45	1
21	4026305614	SELF LOCKING NUT M24X2	1	FLANGED MANIFOLD			
22	1663014700	OIL LINE OUTLET SIDE PN45 M MIXER	1	FL1	1401200400	DRIP OILER – 2 CONNECTIONS	1
	1663028500	FL OIL OUTLET PIPE	1	FL2	1610506400	FLANGE FL	1
	1663005100	OIL LINE PN 45 – GEARBOX	1	FL3	1680600100	VALVE HOUSING GASKET	1
	1663015100	OIL LINE OUTLET SIDE PN58 M MIXER	1	FL4	1685100000	WASHER 14X20X1.5	1
	1663022400	OIL LINE OUTLET SIDE PN84 FL	1	FL5	4026190001	THREADED RING M12	1
	1663005200	OIL LINE PN 58 – GEARBOX	1	FL6	4026351505	WASHER M8	8
	1663015500	OIL LINE OUTLET SIDE PN84 M MIXER	1	FL7	4026706000	UNIV. CONNECTION 90 4X1/8 1020	2
	1663022400	OIL LINE OUTLET SIDE PN84 FL	1	FL8	4026102801	SCREW M8X35	8
	1663005300	OIL LINE PN 84 – GEARBOX	1	FL9	1663022500	OIL LINE INLET SIDE PN84 FL	1
23	1663014800	OIL LINE INLET SIDE PN45 M MIXER	1	FL10	1663022400	OIL LINE OUTLET SIDE PN84 FL	1
	1663028600	FL OIL INLET PIPE	1	MIXER MANIFOLD			
	1663011800	OIL LINE TO LUBR. PUMP PN 45 – G.BOX	1	M1	1605500000	VALVE HANDLE	1
	1663015200	OIL LINE INLET SIDE PN58 M MIXER	1	M2	1608500100	MIXER MANIFOLD	1
	1663022500	OIL LINE INLET SIDE PN58 FL	1	M3	1610100000	OUTLET PORT FLANGE	1
	1663010400	OIL LINE TO LUBR. PUMP PN 58 – G.BOX	1	M4	1623100000	END CAP	1
	1663015600	OIL LINE INLET SIDE PN84 M MIXER	1	M5	1627100200	SUCTION MANIFOLD D.76	1
	1663022500	OIL LINE INLET SIDE PN84 FL	1	M6	1627100500	EXHAUST MANIFOLD D.76	1
	1663010300	OIL LINE TO LUBR. PUMP PN 84 – G.BOX	1	M7	1627100700	SUCTION MANIFOLD D.60 - MIXER	1
24	1663010500	LUBR. PUMP SUCTION PIPE	1	M7	1627100900	SUCTION MANIFOLD D.80 - MIXER	1
25	1680600100	VALVE HOUSING GASKET	1	M8	1627500100	MIXER MANIFOLD	1
26	1680700200	VALVE STEM COVER GASKET	1	M9	1680600100	VALVE HOUSING GASKET	1
27	1680707500	OIL TANK COVER GASKET	1	M10	1680700200	VALVE STEM COVER GASKET	1
28	1612503100	GEARBOX	1	M11	1680700600	MIXER CONNECTION GASKET	1
29	1683600300	200 MM OIL DIP STICK	1	M12	1685002800	WASHER FE 30X8,5	1
29A	1673004100	DIPSTICK SLEEVE	1	M13	1691000000	VALVE SPRING	1
30	1684000000	DRAIN PLUG 3/8	4	M14	4022200030	SEAL RING 41X27X10	1
31	1685002800	WASHER FE 30X8,5	1	M15	4022200250	O-RING OR 6287	2
32	1685100000	WASHER 14X20X1.5	1	M16	4026350709	GROWER WASHER 12	6
33	1685100200	WASHER 17X22X1,5	4	M17	4026351505	WASHER M8	13
34	1687500300	PUMP HOUSING PN58	1	M18	4026103004	SCREW M12X40	6
	1687500200	PUMP HOUSING PN45	1	M19	4026102806	SCREW M8X208	5
	1687500400	PUMP HOUSING PN84	1	M20	4026102807	SCREW M8X25	8
35	1691000000	VALVE SPRING	1	M21	4026308007	NUT M12	6
36	4022200110	SEAL RING 72X48X15	2	22	1663014700	OIL LINE OUTLET SIDE PN45 M MIXER	1
37	4022200030	SEAL RING 41X27X10 GP NBR	1	22	1663015100	OIL LINE OUTLET SIDE PN58 M MIXER	1
37A	1624202300	COCK REGULATING SPACER	1	22	1663015500	OIL LINE OUTLET SIDE PN84 M MIXER	1
38	4029602806	CARDAN SHAFT PROTECTION	1	23	1663014800	OIL LINE INLET SIDE PN45 M MIXER	1
39	4022200240	O-RING 4825	2	23	1663015200	OIL LINE INLET SIDE PN58 M MIXER	1
40	4022200250	O-RING 6287	2	23	1663015600	OIL LINE INLET SIDE PN84 M MIXER	1
41	4022300001	NYLON FILTER D.6	1				

PN 106 D

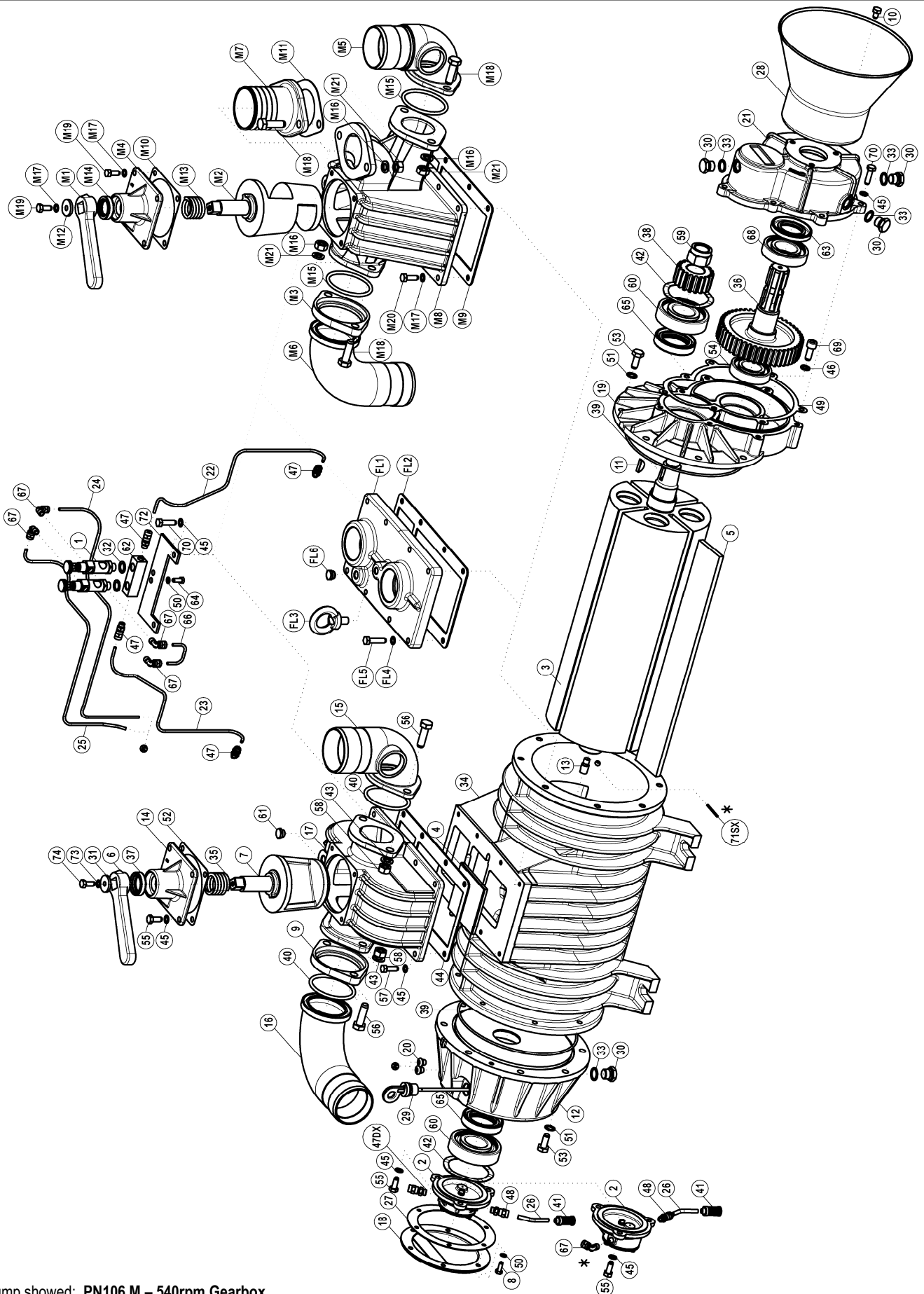


Pump showed: PN106 D CW (Clockwise rotation)

PN106 D

Pos.	Code	Description	Q.ty	Pos.	Code	Description	Q.ty
PN106 DIRECT DRIVE - SMOOTH SHAFT							
1	1401200400	DRIP OILER – 2 CONNECTIONS	2	62	1680700200	VALVE STEM COVER GASKET	1
2	1407200500	GEAR OIL PUMP DX	1	63	4026102808	SCREW M8X30	2
2A	1407202100	GEAR OIL PUMP SX	1	64	4026905002	PLUG ½"	1
3	1521500500	PUMP ROTOR	1	65	1608100000	HYD. CONTROL VALVE	1
4	1593600000	FLAPPER VALVE	1	66	4026102704	SCREW M6X16	2
5	1601601000	VANE PN 106	4	67	4026351504	WASHER M6	2
6	1605500000	VALVE HANDLE	1	68	1663011000	OILER CONNECTION PIPE	1
7	1608500000	CONVEYOR	1	69	4026706000	UNIV. CONNECTION 90 4X1/8 1020	4
8	1610006600	FLANGE FOR DIRECT DRIVE	1	70	4026102704	SCREW M8X20	7
9	1610100000	OUTLET PORT FLANGE	1	71SX	4026414617	PLUG 3X40 6873	1
10	1610500400	END CAP	1	72	1681100100	OILER SUPPORT PLATE	1
11	1610500500	DIRECT DRIVE END PLATE	1	73	4026308005	HEXAGONAL NUT M8	1
12	1612500300	OIL TANK	1	74	4026135414	STUD SCREW M8X45	1
13	1622002600	OIL PUMP DRIVE	1	PN106 HYDRAULIC DRIVE			
14	1623100000	END CAP	1	H1	1470100400	JOINT GA 100	1
15	1627100300	SUCTION MANIFOLD D.80	1	H2	1610005500	HYD. DRIVE FLANGE	1
16	1627100500	EXHAUST MANIFOLD D.76	1	H3	1610500500	DIRECT DRIVE END PLATE	1
17	1627500000	STANDARD MANIFOLD	1	H4	1612501400	HYD. DRIVE GEARBOX	1
18	1640101100	OIL TANK COVER	1	H5	1680700400	END CAP GASKET	1
19	1642003000	CARDAN SHAFT PROTECTION	1	H6	4022100010	GREASER	1
20	1642600000	OIL LINE RUBBER PROTECTION	2	H7	4022200110	SEAL RING 72X48X15	2
21	1650004300	SMOOTH FLANGED SHAFT	1	H8	4022200240	O-RING OR 4825	1
22	1663025200	OIL LINE DX	1	H9	4024107001	HYDRAULIC MOTOR	1
22	1663018700	OIL LINE SX	1	H10	4026136005	SCREW M8X12	1
23	1663018500	OIL LINE DX	1	H11	4026171211	STUD SCREW M12X80	2
23	1663018600	OIL LINE SX	1	H12	4026171304	STUD SCREW M14X40	4
24	1663018600	OIL LINE DX	1	H13	4026300020	COMPENSATION RING	1
24	1663018500	OIL LINE SX	1	H14	4026350709	GROWER WASHER M12	2
25	1663025100	OIL LINE DX	1	H15	4026350710	GROWER WASHER M14	4
25	1663018400	OIL LINE SX	1	H16	4026351505	WASHER M8	3
26	1663010500	LUBR. PUMP SUCTION PIPE	1	H17	4026351506	WASHER M10	8
27	1680707500	OIL TANK COVER GASKET	1	H18	4026359001	WASHER 40X33,5X1,5	1
28	1680700400	END CAP GASKET	1	H19	4026705001	EXTENDED CONNECTION H 36 MM	1
29	1683600300	200 MM OIL DIP STICK	1	H20	4026904003	PLUG 1"	1
29A	1673004100	DIPSTICK SLEEVE	1	H21	4029602700	GREASERS PROTECTION CAP	1
30	1684000000	DRAIN PLUG 3/8	1	H22	4026102907	SCREW M10X25	8
31	1685002800	WASHER FE 30X8,5	1	H23	4026102807	SCREW M8X25	3
32	1685100000	WASHER 14X20X1,5	2	H24	4026103004	SCREW M12X40	2
33	1685100200	WASHER 17X22X1,5	1	H25	4026308008	NUT M14	4
34	1687500500	HOUSING PN106	1	H26	4026305508	SELF LOCKING NUT M12	2
35	1691000000	VALVE SPRING	1	H27	4026305614	SELF LOCKING NUT M24X2	1
36	4022100010	GREASER	1	H28	4023100040	BEARING 40X90X23 6308	1
37	4022200030	SEAL RING 41X27X10 GP NBR	1	SPLINED SHAFT			
37A	1624202300	COCK REGULATING SPACER	1	BR1	1650004700	SPLINED SHAFT 1" 3/8	1
38	4022200110	SEAL RING 72X48X15	3	BR2	4026102911	SCREW M10X45	4
39	4022200240	O-RING OR 4825	2	BR3	4026350708	GROWER WASHER M10	4
40	4022200250	RING OR 6287	2	PULLEY D_150			
41	4022300001	NYLON FILTER D.6	1	PL1	1653501000	PULLEY SPB 150X4	1
42	4026300020	COMPENSATION RING	2	PL2	4026350708	GROWER WASHER M10	4
43	4026350609	GROWER WASHER M12	4	PL3	4026102806	SCREW M8X20	4
44	4026350708	GROWER WASHER M10	4	PNEUMATIC 4-WAY VALVE			
45	4026350909	WASHER M8	18	P1	160855727B0	PNEUMATIC ACTUATOR COCK	1
46	4026500018	TAB 6X10	1	P2	161258B4B0	PNEUMATIC ACTUATOR SUPPORT	1
47SX	4026702004	UNIV. CONNECTION. DIR. 6X1/8 1050	1	P3	1640580QB0	PNEUMATIC ACTUATOR COVER	1
47DX	4026702000	UNIV. CONNECTION DIR. 4X1/8 1050	1	P4	167007ZAB0	PNEUMATIC ACTUATOR NUT	1
47	4026702000	UNIV. CONNECTION DIR. 4X1/8 1050	3	P5	1680700200	COVER GASKET	1
48	4026702004	UNIV. CONNECTION DIR. 6X1/8 1050	1	P6	168409PQB0	COCK REGULATION FERRULE	1
49	4029602700	GREASERS PROTECTION CAP	1	P7	168529TFB0	COCK REGULATION SPACER	1
50	4026351505	WASHER M8	7	P8	1691000200	COCK SPRING	1
51	4026351506	WASHER M10	16	P9	4022100100	SPHERICAL GREASER M6X1	1
52	4026103000	SCREW M12X20	4	P10	4022200005	SEAL 37X27X7	1
53	4026102907	SCREW M10X25	16	P11	4022200330	OR 3375	1
54	4026102911	SCREW M10X45	4	P12	4022200331	OR 2137	1
55	4026102806	SCREW M8X20	10	P13	4026102804	SCREWTE M8X16	4
56	4026103004	SCREW M12X40	4	P14	4026102807	SCREWTE M8X25	4
57	4026102807	SCREW M8X25	6	P15	4026121405	SCREWTE M8X20	4
58	4026308007	NUT M12	4	P16	4026350505	WASHER GROWERM8	4
59	4026305614	SELF LOCKING NUT M24X2	1	P17	4026351505	WASHER M8	8
60	4023100040	BEARING 40X90X23 6308	2	P18	4027100405	PNEUMATIC ACTUATOR	1
61	1680600100	VALVE HOUSING GASKET	1	P19	4027421206	CONNECTION R15 6XG1/8	2

PN 106 M

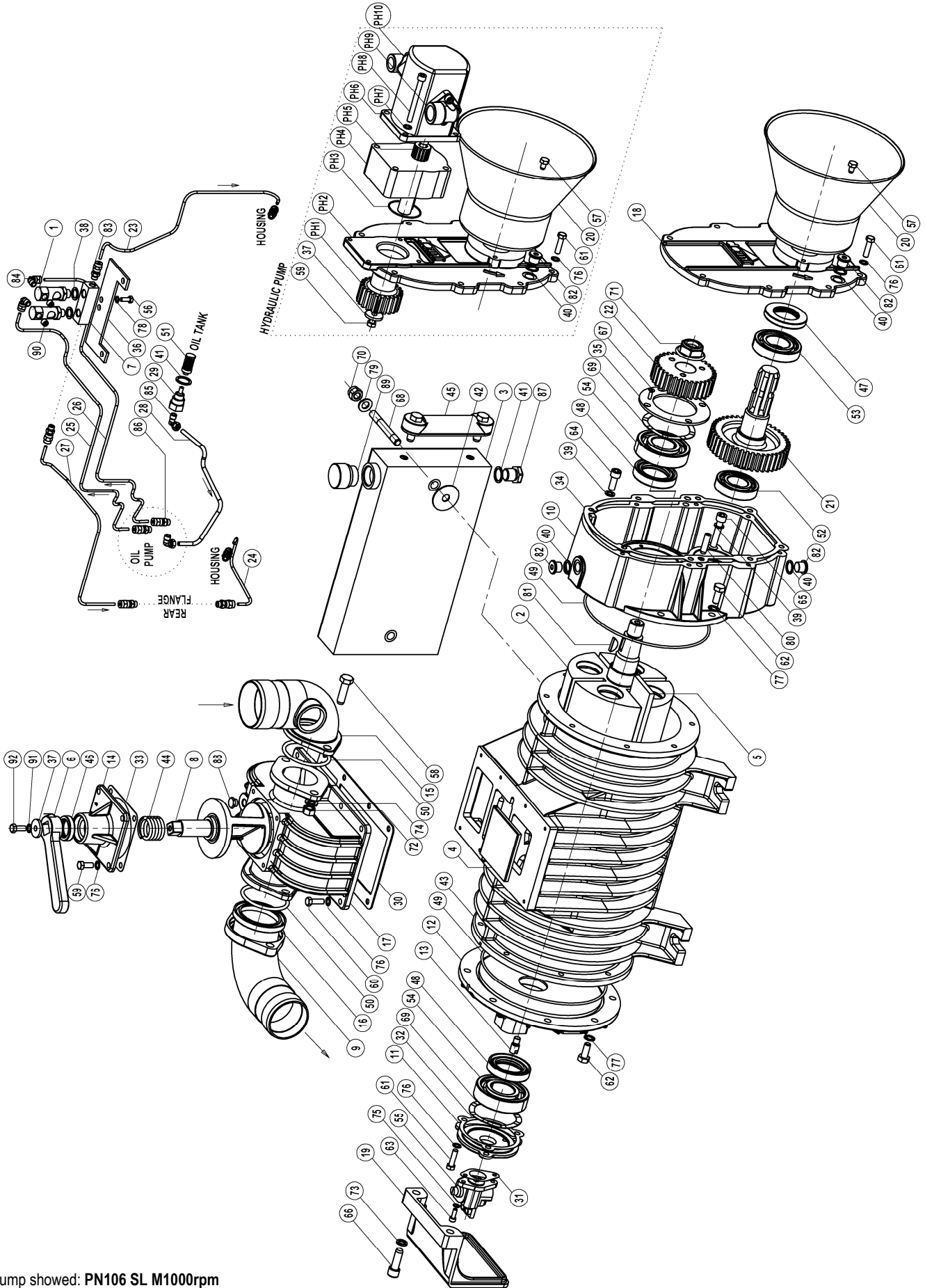


Pump showed: PN106 M – 540rpm Gearbox

PN106 M

Pos.	Code	Description	Q.ty	Pos.	Code	Description	Q.ty
540 RPM GEARBOX							
1	1401200400	DRIP OILER – 2 CONNECTIONS	2	48	4026702004	UNIV. CONNECTION DIR. 6X1/8 1050	1
2	1407200500	GEAR OIL PUMP DX	1	49	1680700000	END COVER GASKET	1
2A	1407202100	GEAR OIL PUMP SX	1	50	4026351505	WASHER M8	7
3	1521500500	PUMP ROTOR	1	51	4026351506	WASHER M10	14
4	1593600000	FLAPPER VALVE	1	52	1680700200	VALVE STEM COVER GASKET	1
5	1601601000	VANE	4	53	4026102907	SCREW M10X25	14
6	1605500000	VALVE HANDLE	1	54	4023100020	BEARING 35 X 72 X 17 6207	1
7	1608500000	CONVEYOR	1	55	4026102806	SCREW M8X20	7
8	4026102407	SCREW M8X20	7	56	4026103004	SCREW M12X40	4
9	1610100000	OUTLET PORT FLANGE	1	57	4026102807	SCREW M8X25	6
10	4026102802	SCREW M8X12	3	58	4026308007	NUT M12	4
11	4026500018	TAB 6X10	1	59	4026305614	SELF LOCKING NUT M24X2	1
12	1612500300	OIL TANK	1	60	4023100040	BEARING 40X90X23 6308	2
13	1622002600	OIL PUMP DRIVE	1	61	4026905002	PLUG 1/4"	1
14	1623100000	END CAP	1	62	1608100000	HYD. CONTROL VALVE	1
15	1627100300	SUCTION MANIFOLD D.80	1	63	4022200040	SEAL RING 72X40X10	1
16	1627100500	EXHAUST MANIFOLD D.76	1	64	4026102704	SCREW M6X16	2
17	1627500000	STANDARD MANIFOLD	1	65	4022200110	SEAL RING 72X48X15	2
18	1640101100	OIL TANK COVER	1	66	1663011000	OILER CONNECTION PIPE	1
19	1610500000	G.BOX DRIVE END PLATE	1	67	4026706000	UNIV. CONNECTION 90 4X1/8 1020	5
20	1642600000	OIL LINE RUBBER PROTECTION	2	68	4023100030	BEARING 40X80X18 6208	1
21	1612503100	GEARBOX	1	69	4026120505	SCREW TCEI M10X25	2
22	1663018600	OIL LINE DX	1	70	4026107111	SCREW M8X30	9
	1663018500	OIL LINE SX	1	71SX	4026414617	PLUG 3X40 6873	1
23	1663018500	OIL LINE DX	1	72	1681100100	OILER SUPPORT PLATE	1
	1663018600	OIL LINE SX	1	73	4026308005	HEXAGONAL NUT M8	1
24	1663025200	OIL LINE DX	1	74	4026135414	STUD SCREW M8X45	1
	1663018700	OIL LINE SX	1	FLANGED MANIFOLD			
25	1663025100	OIL LINE DX	1	FL1	1610506400	FLANGE FL	1
	1663018400	OIL LINE SX	1	FL2	1680600100	VALVE HOUSING GASKET	1
26	1663010500	LUBR. PUMP SUCTION PIPE	1	FL3	4026190001	THREADED RING M12	1
27	1680700300	OIL TANK COVER GASKET	1	FL4	4026350909	WASHER M8	8
28	4029602806	CARDAN SHAFT PROTECTION	1	FL5	4026102801	SCREW M8X35	8
29	1683600300	200 MM OIL DIP STICK	1	FL6	4026905002	PLUG 1/4"	1
29A	1673004100	DIPSTICK SLEEVE	1	PN MIX COLLECTOR			
30	1684000000	DRAIN PLUG 3/8	4	M1	1605500000	VALVE HANDLE	1
31	1685002800	WASHER 30X8,5	1	M2	1608500100	MIXER MANIFOLD	1
32	1685100000	WASHER 14X20X1,5	2	M3	1610100000	OUTLET PORT FLANGE	1
33	1685100200	WASHER 17X22X1,5	4	M4	1623100000	END CAP	1
34	1687500500	HOUSING PN106	1	M5	1627100200	SUCTION MANIFOLD D.76	1
35	1691000000	VALVE SPRING	1	M6	1627100500	EXHAUST MANIFOLD D.76	1
36	1651000000	DRIVE GEAR Z48	1	M7	1627100800	SUCTION MANIFOLD DIA 80 - MIXER	1
37	4022200030	SEAL RING 41X27X10 GP NBR	1	M8	1627500100	MIXER MANIFOLD	1
37A	1624202300	COCK REGULATING SPACER	1	M9	1680600100	VALVE HOUSING GASKET	1
38	1651000100	PINION GEAR Z19	1	M10	1680700200	VALVE STEM COVER GASKET	1
39	4022200240	O-RING OR 4825	2	M11	1680700600	MIXER CONNECTION GASKET	1
40	4022200250	RING OR 6287	2	M12	1685002800	WASHER FE 30X8,5	1
41	4022300001	NYLON FILTER D.6	1	M13	1691000000	VALVE SPRING	1
42	4026300020	COMPENSATION RING	2	M14	4022200030	SEAL RING 41X27X10 GP NBR	1
43	4026350709	GROWER WASHER M12	4	M15	4022200250	RING OR 6287	2
44	1680600100	VALVE HOUSING GASKET	1	M16	4026350609	GROWER WASHER M12	6
45	4026351505	WASHER M8	22	M17	4026350909	WASHER M8	13
46	1685100100	WASHER 10X16X1,5	2	M18	4026103004	SCREW M12X40	6
DX47	4026702000	UNIV. CONNECTION .DIR. 4X1/8	4	M19	4026107108	SCREW M8X20	5
47	4026702000	UNIV. CONNECTION .DIR. 4X1/8	3	M20	4026107110	SCREW M8X25	6
				M21	4026308007	NUT M12	6

PN 106SL M1000 RPM



Pump showed: **PN106 SL M1000rpm**

PN106 sl M1000 rpm

Pos.	Code	Description	Q.ty	Pos.	Code	Description	Q.ty
PN106 1000 RPM GEARBOX				52	4023100020	BEARING 6207	1
1	1401200700	DRIP OILER – 2 CONNECTIONS	2	53	4023100030	BEARING 6208	1
2	1521500500	PUMP ROTOR	1	54	4023100040	BEARING 6308	2
3	1587009400	OIL TANK	1	55	4024251000	OIL PUMP	1
4	1593600000	FLAPPER VALVE	1	56	4026102704	SCREW M6X16	2
5	1601601000	VANE PN106 BK	4	57	4026102802	SCREW M8X12	3
6	1605500000	VALVE HANDLE	1	58	4026103004	SCREW M12X40	4
7	1608100000	HYD CONVEYOR	1	59	4026107108	SCREW M8X20	4
8	1608500000	CONVEYOR	1	60	4026107110	SCREW M8X25	8
9	1610100000	OUTLET PORT FLANGE	1	61	4026107111	SCREW M8X30	11
10	1610512500	G.BOX DRIVE END PLATE	1	62	4026107210	SCREW M10X25	12
11	16105CF2B0	OIL PUMP FLANGE	1	63	4026120304	SCREW M6X16	2
12	16105E5BB0	REAR PLATE	1	64	4026120505	SCREW M10X25	2
13	1622002600	OIL PUMP DRIVE	1	65	4026120510	SCREW M10X50	2
14	1623100000	END CAP	1	66	4026121710	SCREW M12X35	2
15	1627100300	SUCTION MANIFOLD D.80	1	67	4026155505	SCREW M5X16	4
16	1627100500	EXHAUST MANIFOLD D.76	1	68	4026171211	THREADED ROD M12X80	2
17	1627500000	STANDARD MANIFOLD	1	69	4026300020	COMPENSATION RING	2
18	1640003900	G.BOX FRONT FLANGE	1	70	4026305508	BOLT M12 SELF LOCKING	2
19	1642100200	REAR PROTECTION	1	71	4026305614	BOLT M24X2 SELF LOCKING	1
20	4029602806	CARDAN SHAFT PROTECTION	1	72	4026308007	BOLT M12	4
21	1651009600	DRIVING GEAR	1	73	4026350508	WASHER GROWER M12 SQUARE	2
22	1651009700	DRIVED GEAR	1	74	4026350609	WASHER GROWER M12 FLAT	4
23	1663018500	OIL LINE	1	75	4026350908	WASHER M6	2
24	1663062900	OIL LINE	1	76	4026350909	WASHER M8	23
25	16630DJLBO	OIL LINE	1	77	4026350910	WASHER M10	12
26	16630DJMBO	OIL LINE	1	78	4026351504	WASHER M6	2
27	16630DJNBO	OIL LINE	1	79	4026357007	WASHER M12	2
28	16630DJPBO	OIL LINE	1	80	4026401806	PIN 10X36	2
29	1673001000	OIL FILTER PLUG	1	81	4026500018	TAB 6X10	1
30	1680600100	VALVE HOUSING GASKET	1	82	4026701602	PLUG 3/8"	3
31	1680609700	OIL PUMP GASKET	1	83	4026702000	UNIV. CONNECTION 4X1/8	8
32	1680609800	OIL PUMP FLANGE GASKET	1	84	4026706000	UNIV. CONNECTION 90° 4X1/8	2
33	1680700200	END CAP GASKET	1	85	4026706003	UNIV. CONNECTION 90° 6X1/8	2
34	1680708900	GEAR BOX GASKET	1	86	4026706101	UNIV. CONNECTION 4X1/8 OR.	2
35	1681007900	GEAR BOX FLANGE	1	87	4026904503	PLUG M20X1.5	1
6	1681100100	DRIP OILER SUPPORT	1	88	4026905002	PLUG ¼"	1
37	1685002800	WASHER 30X8.5X4	1	89	4026910103	PLUG 1"	1
38	1685100000	WASHER AL 14X20X1.5	2	90	4026910601	CONIC PLUG 1/8"	2
39	1685100100	WASHER AL 10X16X1.5	4	91	4026308005	HEXAGONAL NUT M8	1
40	1685100200	WASHER AL 17X22X1.5	3	92	4026135414	STUD SCREW 12.9 M8X45	1
41	1685100300	WASHER	2	PN106 1000 RPM GEARBOX WITH HYDRAULIC PUMP			
42	1685600200	WASHER VULKOLAN 47.5X13X2	2	PH1	1651009800	OIL PUMP GEAR	1
43	16875E3SBO	HOUSING	1	PH2	1640003800	G.BOX FRONT FLANGE/HDR	1
44	1691000000	SPRING	1	PH3	4022200320	OR 2200 VITON	1
45	40221006001	OIL SIGHT	1	PH4	4024205305	OIL PUMP SUPPORT	1
46	4022200030	Y SEAL 41X27X10	1	PH5	4025240108	JOINT	1
46A	1624202300	COCK REGULATING SPACER	1	PH6	4024205709	OIL PUMP	1
47	4022200040	Y SEAL 72X40X10	1	PH7	4026350909	WASHER M8	4
48	4022200110	Y SEAL 72X48X15	2	PH8	4026120414	SCREW M8X80	4
49	4022200240	OR 4825	2	PH9	4026710015	CONNECTION ¾"	1
50	4022200250	OR 6287	2	PH10	4026710013	CONNECTION ½"	1
51	4022300001	OIL FILTER	1				

Model	Issue date	Revision No.	Revision date	Filled out by	Viewed by
PN	01-01-2002	09	11-06-2013	U.T.	A.T.

Jurop SpA

Via Crosera, 50
33082 Azzano Decimo, PN (Italy)

Tel. +39 0434 636811
Fax. +39 0434 636812

<http://www.juop.it>
e-mail: info@juop.it

Juop SpA reserves the right to modify the products described in this manual without prior notice.