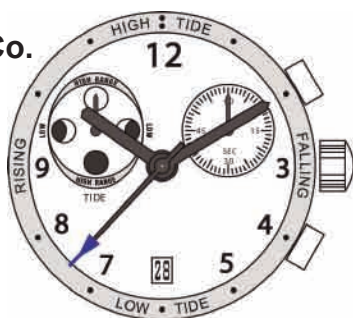


# Tide Watch User Manual

calibre: ISA 8272



Tide



Moon Phases



Date by Window

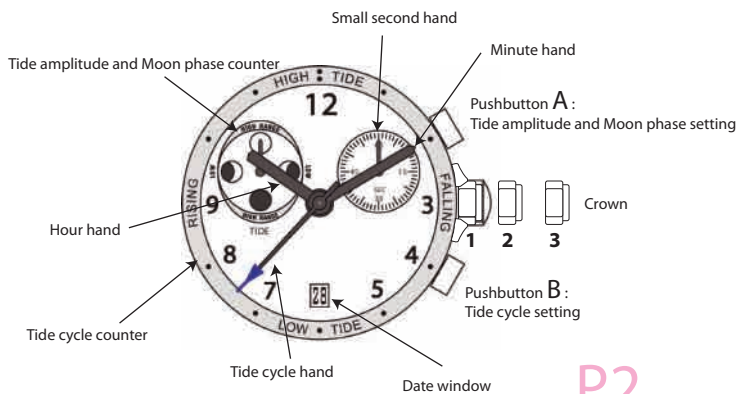


Small Sec.



Battery Life Notification

P1



P2

## SETTING THE TIME AND THE DATE

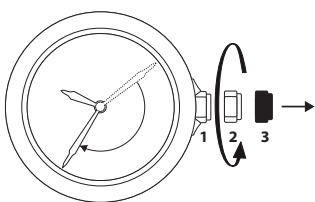
CAUTION: NEVER CORRECT DATE BETWEEN 9:00pm AND 12:30 am.

### Time setting

- 1) Unscrew and pull crown out to Position 3.
- 2) Turn the crown to set the correct time.  
\*if hour hand passed 12:00 and date change it is midnight 12:00 am, otherwise it is noon 12:00 pm.
- 3) Push crown back to Position 1 and screw in.

### Date setting

- 1) Unscrew and pull the crown out to position 2.
- 2) Turn the crown clockwise to set the date.
- 3) Push crown back to Position 1 and screw in.



\*\* After setting time, always screw back the crown by hand tightly to keep the watch water resistant.

P3

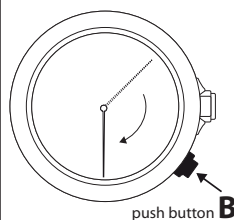
## SETTING THE TIDE FUNCTION - central hand

- 1) Press button **B** for 3 seconds, release when 'beep', now you enter the tide setting mode
- 2) Press **B** again to set the state of the local tide.

\* Continuous pressing on **B** enables rapid setting to be performed.

\* After 3 seconds without pressing on **B**, a beep indicates exit from setting mode.

The tide cycle takes place over one revolution of the dial in 12 hours 25 minutes and 14 seconds. High tide corresponds to the "12 o'clock" position and low tide corresponds to the opposite position, hence "6 o'clock".



P4

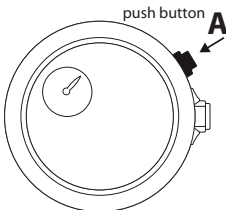
## SETTING THE TIDE AMPLITUDE (MOON PHASES) - COUNTER AT 10 O'CLOCK

The tide amplitude counter performs one revolution in 29 days 12 hours and 44 minutes.

- 1) Press button **A** for 3 seconds, release when 'beep', now you enter the **MOON PHASES** setting mode
- 2) Press **A** again to set the tide amplitude corresponding to the moon phase.

\* Continuous pressing on **A** enables rapid setting to be performed.

\* After 3 seconds without pressing on **A**, a beep indicates exit from setting mode.



Comment :

The moon phases hand will start with its setting time, jumps step forward every 24 hours.

P5

## Note for Del Mar Tide Watch

The Del Mar Tide Watch approximates the tides based on average intervals and lunar cycles.

Local tides can vary from the levels indicated on the display especially in certain portions of the West Coast of Florida that don't have two tides per day.

For customer guidance in Tide predictions, we recommend using this updated web site:

[http://www.tidesandcurrents.noaa.gov/curr\\_pred.html](http://www.tidesandcurrents.noaa.gov/curr_pred.html)

The Del Mar Tide watch should never be used for navigation.

P6

### Characteristics :

Tide analogical / electronic movement. Rotating stepping motors.

Date, quick date correction.

Small second, 1 step per second.

**Notification end of battery life (EOL):** indication by small second hand at 2:00 jumping 4 successive steps every 4 seconds.

**Indication of the tide state,** semi-diurnal.

**Tide :** The center sweep hand makes 1 revolution in 12 hours 25 minutes 14 seconds.

**Tide amplitude:** The small counter hand makes 1 revolution in 29 days 12 hours 44 minutes.

**Movement :** SWISS MADE ISA 8272

**Operating temperature :** 0 °C --- 50 °C

**Accuracy :** ± 0.5 sec/day/25 °C

**Battery :** SR927SW

**Battery life :** approx. 39 months

P8

### SERVICE

Emtech La Costa Co.  
Delmar service dept.  
1320 State Rt 9 #26  
Champlain, NY 12919

- When the watch is under water or wet, never use the pushers/bezels, or set the time. Watch case and metal bracelet should be rinsed thoroughly in fresh water after being in salt water.
- No backward hand, or date, adjustments should not be made when the hands read between 9:00pm and 12:30am. At these times, the gears are too close together and such a change could cause damage.
- No hot tub/sauna. Please do not take your Delmar watch into the Hot Tub or Sauna. The combination of extreme heat and water may cause your watch to lose some of its water resistance.

Indication		Water related use	
Depth	Caseback marking	Scuba Diving	Water resistant characteristics
200 meters/650 feet	200m	YES	Suitable for normal Scuba Diving
500 meters/1650 feet	500m	YES	Suitable for Deep Diving
1000 meters/3300 feet	1000m	YES	Suitable for Deep Diving

P7