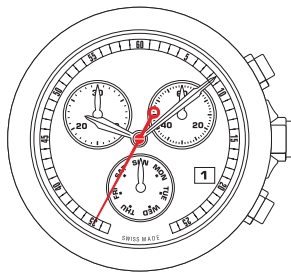


User Manual

calibre: ISA 8172



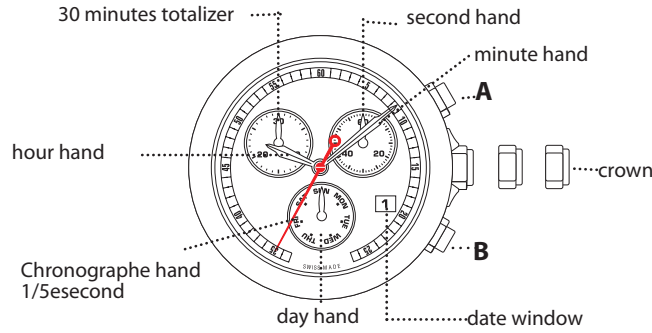
P. 1

WATER RESISTANT

- When the watch is under water or wet, never use the pushers/crown, or set the time. Watch case and metal bracelet should be rinse in fresh water after being in salt water and dry thoroughly.
- No hot tub/sauna. Please do not take your watch into the Hot Tub or Sauna. The combination of extreme heat and water may cause your watch to lose some of its water resistance.

Caseback marking	Water resistant characteristics	wash hand	Swimming	Scuba Diving
NONE	-----	x	x	x
30 meters / 3 ATM	Minor exposure to water (washing face, rain, etc.)	✓	x	x
100 meters/10 ATM	Swimming , Snorkeling	✓	✓	x
200 meters/ 20 ATM	Suitable for normal Scuba Diving	✓	✓	✓
1000 meters/100ATM	Suitable for Deep Diving	✓	✓	✓

P. 6



P. 2

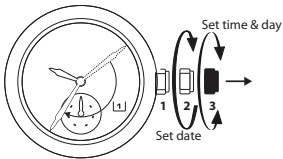
Specifications

- **Type:** Analog Chronograph quartz watch
- **Accuracy:** Within ± 0.5 seconds per day on average (when worn at normal temperatures)
- **Operating temperature range:** 0°C to +50°C
- **Display functions:** small second hand, data and day.
- **Chronograph functions:** Central chronograph trotteuse, five steps per second. 30 minute-counter, Autostop and reset after 2 hours of timing.
- **Battery :** SR927SW / 395 approx. 3years (with chrono 1h/day)
- **Change battery(EOL):** Indication by small second hand jumping 4 successive steps every 4 seconds.

P. 7

SETTING THE TIME, DAY OF WEEK AND THE DATE

CAUTION: NEVER CORRECT DATE BETWEEN 9:00 PM AND 12:30 AM.



Day of week and Time setting

- 1) Pull the crown out to position 3.
- 2) Turn the hands to set the correct day by turning 24h and then the correct time.
** if hour hand passed 12:00 and date change it is midnight 12:00 am, otherwise it is noon 12:00 pm.
- 3) Push crown back to Position 1.

Date setting

- 1) Pull the crown out to position 2.
- 2) Turn the crown clockwise to set the date.
- 3) Push crown back to Position 1.

P. 3

FIVE YEAR LIMITED WARRANTY

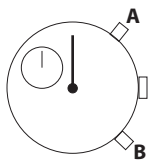
Manufacturer warrants watches to the original consumer or a period of five years from the date of purchases that the purchased watch is free of defects in materials and workmanship under normal use . This warranty does not include alterations to the case, strap, bracelet and crystal (glass), as well as water marks (unless marks water resistant has shown). This warranty is void if the watch has been damaged by accident or negligence.

SERVICE
Emtech La Costa Co. / Del Mar service dept.
1320 State Rt 9 #26 Champlain, NY 12919

P. 8

USING THE CHRONOGRAPH

This chronograph is able to measure and display time in 1/5 second up to maximum of 30 minutes . After 2hours of continuous running the chrono stops and resets automatically to save the battery.



Measuring time with the chronograph

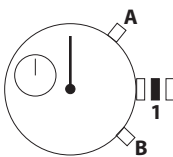
1. The chronograph can be started and stopped each time button "A" is pressed.
2. Pressing button "B" resets the chronograph and the chronograph second hand and chronograph minute hand return to zero position.

Split time measuring

Pressing button "B" when the chronograph running will stop the chrono second hand temporarily (time still measure), and you can read the split time. Pressing "B" again to continue.

P. 4

CHRONOGRAPH RESET (INCL. AFTER REPLACING BATTERY)



This procedure should be performed when the chronograph second hand does not return to zero position after the chronograph has been reset, and including after the battery has been replaced.

1. Pull the crown out to the 1st position.
2. Press button "A" to set the chronograph second hand to zero position.Press button "B" to set the chronograph minute hand to zero position.The chronograph hand can be advanced rapidly by continuously pressing button "A" or button "B".
3. Once the hand have been reset to zero position, push the crown back to the normal position.

P. 5