



Model: _____ Item #: _____ Date: _____
 Project: _____ Qty: _____ Approved By: _____

Ice Bins

Standard Series Underbar



18-24-7 Shown
 Available in 1800 or 2100 Series

Standard Features

Interior	20 gauge stainless steel
Front Apron	22 gauge stainless steel clad over 20 gauge stainless steel
Backsplash	22 gauge stainless steel
Back & Bottom	20 gauge galvanized steel
Legs	1-5/8" tubular 16 gauge galvanized steel w/ grey plastic bullet foot
Plumbing	1" IPS drain connection

Ice Bin with Cold Plate

Cold Plate	Cast aluminum post mix plate with 7 circuits. Plate is sealed into bottom. Each circuit is 5/16" OD stainless steel tubing. Two full with remainder to be half circuits. Bump and swedge fittings on ends.
Plumbing	1/2" IPS drain connection. 4" PVC tailpiece provided. PVC tailpiece required to avoid condensation through metal to metal contact.

Cold Plate units supplied with 1/2" x 4" PVC tailpiece. 1/2" - 20 male threaded

Model KR-CPN4



Optional Accessories

C-19	Stainless Steel Divider (12" Deep)
C19B	Stainless Steel Divider (15" Deep)
C-21	Bottle Wells (6 pack)
C-32	Condiment Tray
C-34	Stainless Steel Perforated Bottom (24", No Cold Plate)
C-35	Stainless Steel Perforated Bottom (30"+, No Cold Plate)
C-36	Upgrade: Stainless Steel Legs
C-39	Right End Side Splash
C-40	Left End Side Splash
SC"XX"H	Partial Sliding Cover ("XX" denotes size of Ice Bin) Example: 36" Ice Bin would need an SC36H
SC"XX"F	Full Sliding Cover ("XX" denotes size of Ice Bin) Example: 36" Ice Bin would need an SC36F
C-43	Bottle Wells (2 pack)
C-46	Upgrade: 10 Circuit Cold Plate (from 7 Circuit Cold Plate)
S-"XX"	Single Speedrail ("XX" denotes 24", 30", or 36")
D-"XX"	Double Speedrail ("XX" denotes 24", 30", or 36")





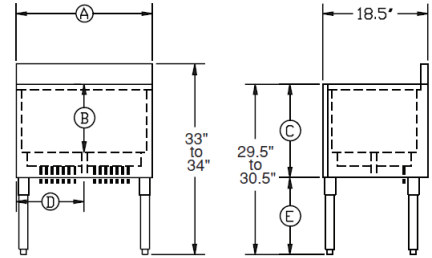
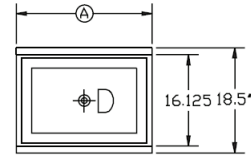
Model: _____ Item #: _____ Date: _____
 Project: _____ Qty: _____ Approved By: _____

Ice Bins

Standard Series Underbar

1800 Series

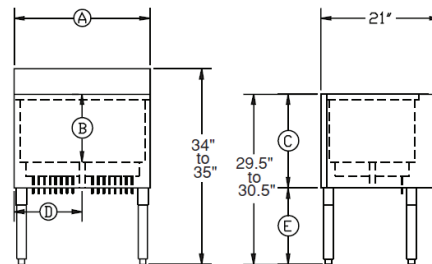
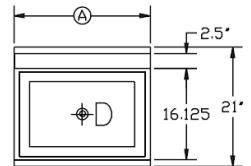
Model Numbers	Length (A)	Ice Bin Depth (B)	Overall Depth (C)	Left Side to Drain (D)	Inside Bin Dimensions	Cold Plate Circuits	Ice Capacity (lbs.)	Leg Size (E)	Weight (lbs.)
18-18	1'-6"	12"	13 1/2"	9"	15" x 16"	N/A	50	16"	40
18-24	2'-0"	12"	13 1/2"	12"	15" x 22"	N/A	80	16"	55
18-30	2'-6"	12"	13 1/2"	15"	15" x 28"	N/A	97	16"	65
18-36	3'-0"	12"	13 1/2"	18"	15" x 34"	N/A	115	16"	69
18-18-7	1'-6"	12"	16 1/2"	9"	15" x 16"	7	50	13"	70
18-24-7	2'-0"	12"	16 1/2"	12"	15" x 22"	7	80	13"	105
18-30-7	2'-6"	12"	16 1/2"	15"	15" x 28"	7	97	13"	113
18-36-7	3'-0"	12"	16 1/2"	18"	15" x 34"	7	115	13"	115
18-24DP	2'-0"	15"	16 1/2"	12"	15" x 22"	N/A	100	13"	62
18-30DP	2'-6"	15"	16 1/2"	15"	15" x 28"	N/A	120	13"	69
18-36DP	3'-0"	15"	16 1/2"	18"	15" x 34"	N/A	138	13"	80
18-24DP-7	2'-0"	15"	19 1/2"	12"	15" x 22"	7	100	10"	132
18-30DP-7	2'-6"	15"	19 1/2"	15"	15" x 28"	7	120	10"	135
18-36DP-7	3'-0"	15"	19 1/2"	18"	15" x 34"	7	138	10"	145



MECHANICAL REQUIREMENTS: Cold Plate: 1/2" IPS drain connection No Cold Plate: 1" IPS drain connection

2100 Series

Model Numbers	Length (A)	Ice Bin Depth (B)	Overall Depth (C)	Left Side to Drain (D)	Inside Bin Dimensions	Cold Plate Circuits	Ice Capacity (lbs.)	Leg Size (E)	Weight (lbs.)
21-24	2'-0"	12"	13 1/2"	12"	15" x 22"	N/A	80	16"	55
21-30	2'-6"	12"	13 1/2"	15"	15" x 28"	N/A	97	16"	65
21-36	3'-0"	12"	13 1/2"	18"	15" x 34"	N/A	115	16"	80
21-24-7	2'-0"	12"	16 1/2"	12"	15" x 22"	7	80	13"	120
21-30-7	2'-6"	12"	16 1/2"	15"	15" x 28"	7	97	13"	130
21-36-7	3'-0"	12"	16 1/2"	18"	15" x 34"	7	115	13"	135
21-24DP	2'-0"	15"	16 1/2"	12"	15" x 22"	N/A	100	13"	65
21-30DP	2'-6"	15"	16 1/2"	15"	15" x 28"	N/A	120	13"	80
21-36DP	3'-0"	15"	16 1/2"	18"	15" x 34"	N/A	138	13"	95
21-24DP-7	2'-0"	15"	19 1/2"	12"	15" x 22"	7	100	10"	150
21-30DP-7	2'-6"	15"	19 1/2"	15"	15" x 28"	7	120	10"	155
21-36DP-7	3'-0"	15"	19 1/2"	18"	15" x 34"	7	138	10"	160



MECHANICAL REQUIREMENTS: Cold Plate: 1/2" IPS drain connection No Cold Plate: 1" IPS drain connection

