



Item No.: \_\_\_\_\_  
 Order No.: \_\_\_\_\_  
 Qty: \_\_\_\_\_ Date: \_\_\_\_\_

## ADJUSTABLE DOUBLE OVER-SHELF

### Features

- All polished stainless steel
- Shelving can be vertically adjusted on 1" (25 mm) increments for the entire post length
- Shipped knock-down
- Side mount & deck mount installation location
- Space saving design



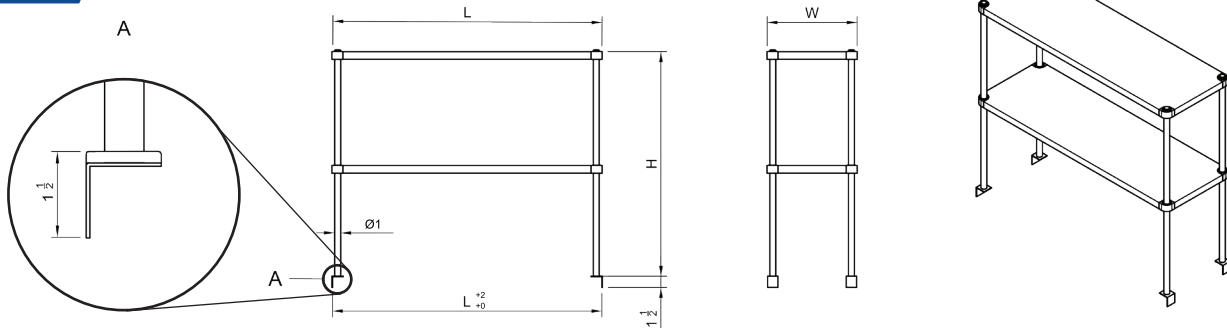
Intertek



### Description **Adjustable Double Over-Shelf**

This overshelf has two storage shelves to maximize the available space of your kitchen, under shelf can be adjust to any height. Its stainless steel construction ensures long-lasting durability to stand up to repeated use, and the whole shelf easily mounts on top of your beverage air S model. This storage shelf ships knocked down, but is easy to assemble and install. It comes with the required hardware for installation.

### Plan View **DS-1248A**



Order No.	W x L x H (in)	Load Cap. (lbs)	G. W. (lbs)/ case
DS-1236A	12 x 36-1/2 x 36	200	25
DS-1248A	12 x 48-1/2 x 36	200	40
DS-1260A	12 x 60-1/2 x 36	200	46
DS-1272A	12 x 72-1/2 x 36	200	53
DS-1636A	16 x 36-1/2 x 36	200	31
DS-1648A	16 x 48-1/2 x 36	200	44
DS-1660A	16 x 60-1/2 x 36	200	52
DS-1672A	16 x 72-1/2 x 36	200	62
DS-1836A	18 x 36-1/2 x 36	200	30
DS-1848A	18 x 48-1/2 x 36	200	43
DS-1860A	18 x 60-1/2 x 36	200	52
DS-1872A	18 x 72-1/2 x 36	200	66